

LEA Name : Muhlenberg SD
Address : 801 Bellevue Avenue
Reading, PA 19605

County : Berks
AUN Number : 114065503
LEA Type : SD

Annual Financial Report Accuracy Certification Statement

For Fiscal Year Ending
6/30/2024

Pennsylvania Department of Education
&
Office of Comptroller Operations
PDE-2056: Intermediate Unit
PDE-2057: School District, AVTS/CTC, Charter School,
and Special Program Jointure

CERTIFICATION: By signing this page I agree that the electronic data submitted is a complete and accurate statement of the financial operations and status of the local education agency for the fiscal year. It has been prepared in accordance with generally accepted accounting principles and established Commonwealth of PA reporting guidelines.

Chief School Administrator Signature

Date

Board Secretary Signature

Date

Shane Mathias

(610)921-8000

Ext : 1275

Contact Person

Contact Person Telephone Number

mathias@mhlsdk12.net

Contact Person E-mail Address

Contact Person Fax Number

Audit Certification
Annual Financial Report:
For Fiscal Year Ending **6/30/2024**
(Pursuant to PA School Code Section 218(b))

LEA Name : Muhlenberg SD
AUN Number : 114065503
County : Berks

Audit Certification Due: 12/31/2024

This certification is applicable to the Annual Financial Report data submitted through the Consolidated Financial Reporting System (CFRS).

CERTIFICATION: By signing this page I agree that the financial statements of the school have been properly audited as noted above pursuant to Article XXIV, and in the auditor's professional opinion, the Annual Financial Report (PDE-2057) submitted through CFRS is materially consistent with the audited financial statements.

Chief School Administrator

Board Secretary

Signature

Date

Signature

Date

Shane Mathias

Contact Person

mathiass@muhlsdk12.net

Contact Person E-mail Address

(610)921-8000 Ext :1275

Contact Person Telephone Number

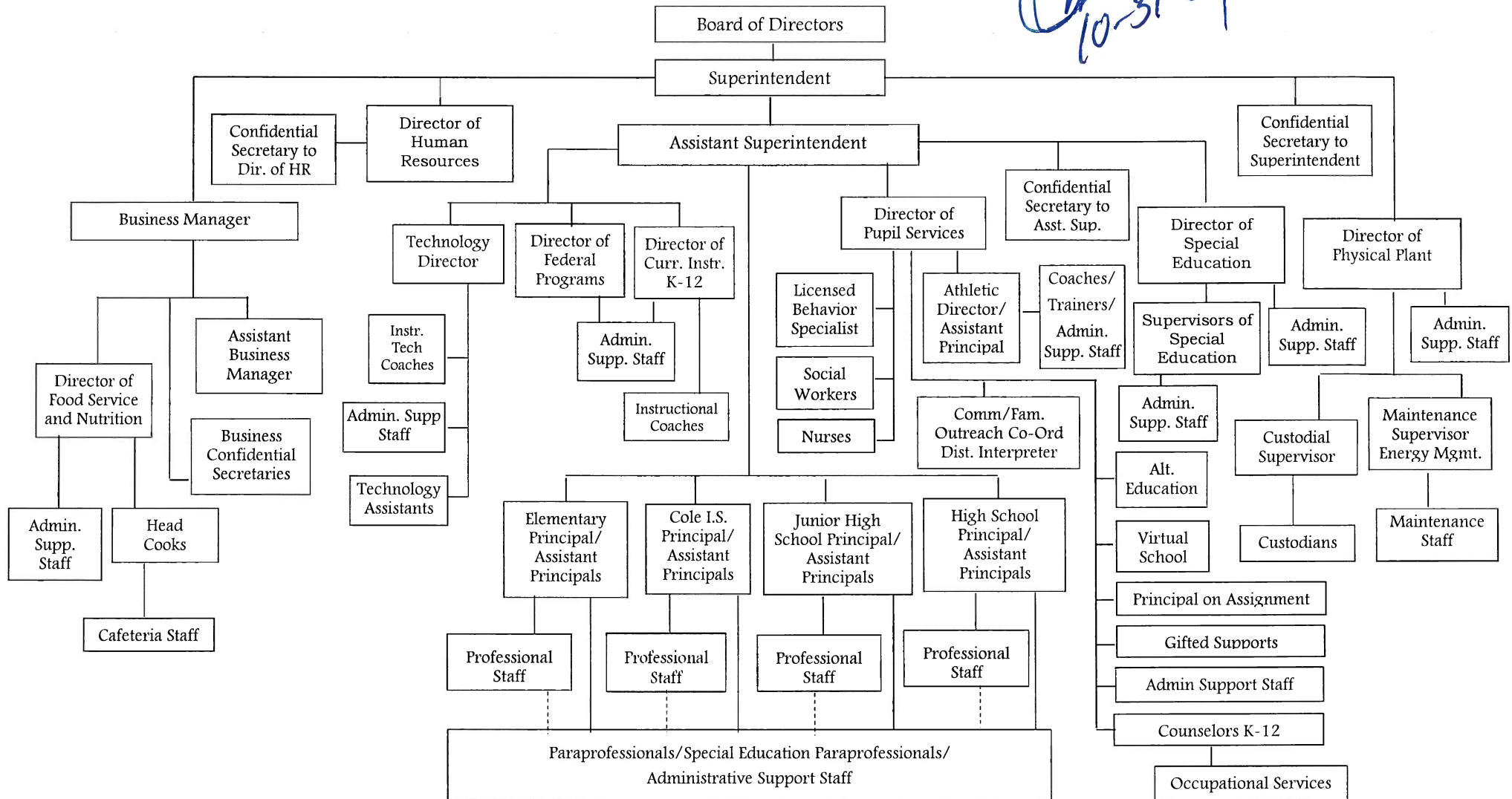
Contact Person Fax Number



MUHLENBERG SCHOOL DISTRICT

OK
10-31-24

M





Book	Policy Manual
Section	600 Finances
Title	Capital Assets
Code	622
Status	Active
Legal	1. 24 P.S. 218 2. 24 P.S. 613 Governmental Accounting Standards Board, Statement No. 34
Adopted	May 11, 2011

Purpose

The Muhlenberg School District policy follows the requirements set forth by the Governmental Accounting Standard Board (GASB) Statement No. 34 as it pertains to Capital Asset Reporting.

Definition

The policy applies to Muhlenberg School District's acquisition and depreciation of capital assets. **Capital assets** include land, improvements to land, easements, buildings and additions, building improvements, furniture, fixtures and equipment, equipment under lease, vehicles, works of art and historical treasures, construction in progress and infrastructure. Capital assets are tangible assets used in operations and have initial useful lives extending beyond a single reporting period. Equipment will not change its original shape, appearance or character with use and it can be expected to last more than one (1) year with reasonable care and maintenance.

Authority

Participation of the school entity in any such activity shall be in accordance with Board policy.[1][2]

Delegation of Responsibility

The Board delegates to the Supervisor of Accounts the responsibility to coordinate the compilation and preparation of all information necessary to implement this policy. The Supervisor of Accounts shall be responsible for implementation of the necessary procedures to establish and maintain a capital asset inventory, including depreciation schedules.

The Business Manager shall prepare the required Management's Discussion and Analysis (MD&A). The MD&A shall be in the form required by GASB Statement Number 34 and shall be submitted to the Board for approval prior to publication. Prior to submission of the MD&A for Board approval, the school entity's independent auditors shall review the MD&A, in accordance with SAS Number 52, "Required Supplementary Information".

<u>Val Number</u>	<u>Description</u>	<u>Justification</u>
30116	<p>Revenue Detail: A large amount has been reported as Earnings on Investments in Fund 32, account 6500, which should only include interest and/or dividend earnings. Correct or provide a brief explanation of the revenue reported.</p> <p>Revenue Detail 6500, Fund 32: \$60,486.59</p>	<p>Amount is correct. Much higher interest rates over the entire year compared to the year prior.</p>
30214	<p>New bond proceeds have been reported in governmental funds. An interfund transfer into Capital Reserve Fund 32 has also been reported. Note that bond proceeds are an unallowable source of funding in fund 32 per municipal code restrictions. Transfers of bond proceeds of any type into fund 32 are prohibited. Please confirm that no bond proceeds have been transferred into Fund 32, or correct the AFR data.</p> <p>Governmental Fund Revenue, Account 9110: \$14,800,000.00 Fund 32 Revenue, Account 9310: \$1,106,503.00</p>	<p>No bond proceeds were transferred into Fund 32.</p>
50410	<p>SESS - 2140 Psychological Services: SESS Schedule amounts for Special Education vary from prior year by 40% or more. Correct the data or enter a justification.</p> <p>SESS Schedule 2140: \$239,960.07 Prior Year SESS Schedule 2140: \$112,541.60</p>	<p>Data is correct. District increased the use of contracted psychologists for student evaluations during the year based on need.</p>

LEA : 114065503 Muhlenberg SD

Printed 11/26/2024 3:34:33 PM

Amounts Expressed in Whole Dollars		<u>General Fund</u> <u>(10)</u>	<u>Student Sponsored</u> <u>Activity Fund</u> <u>(21)</u>	<u>Public Purpose Trust</u> <u>(27)</u>	<u>Other Compt Approved</u> <u>(28)</u>	<u>Athletic / Activity</u> <u>(29)</u>
Assets And Deferred Outflows Of Resources						
Assets						
0100	Cash and Cash Equivalents	28,537,229	554,985			48,654
0110	Investments					
0120	Taxes Receivable	903,419				
0130	Due From Other Funds	23,058				
0141	Due From Other Governments					
0142	State Revenue Receivable	3,982,329				
0143	Federal Revenue Receivable	885,794				
0145	Other Intergovernmental Revenue Receivable					
0146	Due from Primary Government					
0147	Due from Component Unit					
0150	Other Receivables	99,481				
0170	Inventories					
0180	Prepaid Expenses (Expenditures)	15,896				
0190	Other Current Assets					
Total Assets		\$34,447,206	\$554,985			\$48,654
0910	Deferred Outflows of Resources					
Total Assets And Deferred Outflows Of Resources		\$34,447,206	\$554,985			\$48,654

LEA : 114065503 Muhlenberg SD

Printed 11/26/2024 3:34:33 PM

Amounts Expressed in Whole Dollars		<u>Capital Reserve (690.</u> <u>1850)</u> <u>(31)</u>	<u>Capital Reserve (1431)</u> <u>(32)</u>	<u>Other Capital Projects</u> <u>Fund</u> <u>(39)</u>	<u>Debt Service</u> <u>(40)</u>	<u>Permanent</u> <u>(90)</u>
Assets And Deferred Outflows Of Resources						
Assets						
0100	Cash and Cash Equivalents		1,698,489	13,226,640		
0110	Investments					
0120	Taxes Receivable					
0130	Due From Other Funds					
0141	Due From Other Governments					
0142	State Revenue Receivable					
0143	Federal Revenue Receivable					
0145	Other Intergovernmental Revenue Receivable					
0146	Due from Primary Government					
0147	Due from Component Unit					
0150	Other Receivables					
0170	Inventories					
0180	Prepaid Expenses (Expenditures)					
0190	Other Current Assets					
Total Assets			\$1,698,489	\$13,226,640		
0910	Deferred Outflows of Resources					
Total Assets And Deferred Outflows Of Resources			\$1,698,489	\$13,226,640		

LEA : 114065503 Muhlenberg SD

Printed 11/26/2024 3:34:33 PM

Amounts Expressed in Whole Dollars		<u>Total Governmental</u>
		<u>Funds</u>
Assets And Deferred Outflows Of Resources		
Assets		
0100 Cash and Cash Equivalents	44,065,997	
0110 Investments		
0120 Taxes Receivable	903,419	
0130 Due From Other Funds	23,058	
0141 Due From Other Governments		
0142 State Revenue Receivable	3,982,329	
0143 Federal Revenue Receivable	885,794	
0145 Other Intergovernmental Revenue Receivable		
0146 Due from Primary Government		
0147 Due from Component Unit		
0150 Other Receivables	99,481	
0170 Inventories		
0180 Prepaid Expenses (Expenditures)	15,896	
0190 Other Current Assets		
Total Assets	\$49,975,974	
0910 Deferred Outflows of Resources		
Total Assets And Deferred Outflows Of Resources	\$49,975,974	

LEA : 114065503 Muhlenberg SD

Printed 11/26/2024 3:34:33 PM

Amounts Expressed in Whole Dollars		<u>General Fund</u> <u>(10)</u>	<u>Student Sponsored</u> <u>Activity Fund</u> <u>(21)</u>	<u>Public Purpose Trust</u> <u>(27)</u>	<u>Other Compt Approved</u> <u>(28)</u>	<u>Athletic / Activity</u> <u>(29)</u>
Liabilities And Deferred Inflows Of Resources And Fund Balances						
Liabilities						
0400	Due to Other Funds					
0411	Due to Other Governments					
0412	Due to Primary Government					
0413	Due to Component Unit					
0420	Accounts Payable	1,539,776	6,516			
0430	Contracts Payable					
0440	Current Portion of Long-Term Debt					
0450	Short-Term Payables					
0461	Accrued Salaries and Benefits	7,473,310				
0462	Payroll Deductions and Withholding					
0480	Unearned Revenues	8,924				
0490	Other Current Liabilities	56,917				
Total Liabilities		\$9,078,927	\$6,516			
0950	Deferred Inflows of Resources	605,990				
Fund Balances						
0810	Nonspendable Fund Balance	15,896				
0820	Restricted Fund Balance		548,469			48,654
0830	Committed Fund Balance					
0840	Assigned Fund Balance	18,051,223				
0850	Unassigned Fund Balance	6,695,170				
Total Fund Balances		\$24,762,289	\$548,469			\$48,654
Total Liabilities, Deferred Inflows Of Resources And Fund Balances		\$34,447,206	\$554,985			\$48,654

LEA : 114065503 Muhlenberg SD

Printed 11/26/2024 3:34:33 PM

Amounts Expressed in Whole Dollars		<u>Capital Reserve (690.</u> <u>1850)</u> <u>(31)</u>	<u>Capital Reserve (1431)</u> <u>(32)</u>	<u>Other Capital Projects</u> <u>Fund</u> <u>(39)</u>	<u>Debt Service</u> <u>(40)</u>	<u>Permanent</u> <u>(90)</u>
Liabilities And Deferred Inflows Of Resources And Fund Balances						
Liabilities						
0400	Due to Other Funds					
0411	Due to Other Governments					
0412	Due to Primary Government					
0413	Due to Component Unit					
0420	Accounts Payable			473,744		
0430	Contracts Payable					
0440	Current Portion of Long-Term Debt					
0450	Short-Term Payables					
0461	Accrued Salaries and Benefits					
0462	Payroll Deductions and Withholding					
0480	Unearned Revenues					
0490	Other Current Liabilities					
Total Liabilities				\$473,744		
0950	Deferred Inflows of Resources					
Fund Balances						
0810	Nonspendable Fund Balance					
0820	Restricted Fund Balance		1,698,489	12,752,896		
0830	Committed Fund Balance					
0840	Assigned Fund Balance					
0850	Unassigned Fund Balance					
Total Fund Balances			\$1,698,489	\$12,752,896		
Total Liabilities, Deferred Inflows Of Resources And Fund Balances			\$1,698,489	\$13,226,640		

LEA : 114065503 Muhlenberg SD

Printed 11/26/2024 3:34:33 PM

Amounts Expressed in Whole Dollars		<u>Total Governmental</u> <u>Funds</u>
Liabilities And Deferred Inflows Of Resources And Fund Balances		
Liabilities		
0400 Due to Other Funds		
0411 Due to Other Governments		
0412 Due to Primary Government		
0413 Due to Component Unit		
0420 Accounts Payable	2,020,036	
0430 Contracts Payable		
0440 Current Portion of Long-Term Debt		
0450 Short-Term Payables		
0461 Accrued Salaries and Benefits	7,473,310	
0462 Payroll Deductions and Withholding		
0480 Unearned Revenues	8,924	
0490 Other Current Liabilities	56,917	
Total Liabilities	\$9,559,187	
0950 Deferred Inflows of Resources	605,990	
Fund Balances		
0810 Nonspendable Fund Balance	15,896	
0820 Restricted Fund Balance	15,048,508	
0830 Committed Fund Balance		
0840 Assigned Fund Balance	18,051,223	
0850 Unassigned Fund Balance	6,695,170	
Total Fund Balances	\$39,810,797	
Total Liabilities, Deferred Inflows Of Resources And Fund Balances	\$49,975,974	

Amounts Expressed in Whole Dollars		<u>General Fund</u> <u>(10)</u>	<u>Student Sponsored</u> <u>Activity Fund</u> <u>(21)</u>	<u>Public Purpose Trust</u> <u>(27)</u>	<u>Other Compt Approved</u> <u>(28)</u>	<u>Athletic / Activity</u> <u>(29)</u>
Revenues						
6000	Revenue from Local Sources	51,565,709	277,858			66,102
7000	Revenue from State Sources	26,169,657				
8000	Revenue from Federal Sources	3,616,766				
Total Revenues		\$81,352,132	\$277,858			\$66,102
Expenditures						
1000	Instruction	44,064,197				
2000	Support Services	23,812,239				
3000	Operation of Non-Instructional Services	1,942,182	233,375			72,702
4000	Facilities Acquisition, Construction and Improvement Services	1,122,314				
5110	Debt Service					
5130	Refund of Prior Year Revenues / Receipts	1,560				
5140	Leases and Other Right-to-Use Arrangements	301,096				
Total Expenditures		\$71,243,588	\$233,375			\$72,702
Excess (Deficiency) Of Revenues Over Expenditures		\$10,108,544	\$44,483			(\$6,600)
Other Financing Sources (Uses)						
9110	Face Value of Bonds Issued					
9120	Proceeds from Refunding of Bonds					
9130	Bond Premiums					
9200	Proceeds from Extended Term Financing, Leases, and Other Right-to-Use Arrangements	820,241				
9300	Interfund Transfers - IN	57,497				
9400	Sale of or Compensation for Loss of Fixed Assets	5,809				
9710	Transfers from Component Units					
9720	Transfers from Primary Governments					
9910	Other Financing Sources Not Listed in the 9000 Series					
9990	Insurance Recoveries	188				
5120	Debt Service – Refunded Bonds					
5150	Bond Discounts					
5200	Interfund Transfers – Out	7,149,358				
5300	Transfers Out to Component Units/Primary Governments					
Total Other Financing Sources (Uses)		(\$6,265,623)				

Amounts Expressed in Whole Dollars		<u>Capital Reserve (690.1850)</u> <u>(31)</u>	<u>Capital Reserve (1431)</u> <u>(32)</u>	<u>Other Capital Projects</u> <u>Fund</u> <u>(39)</u>	<u>Debt Service</u> <u>(40)</u>	<u>Permanent</u> <u>(90)</u>
Revenues						
6000	Revenue from Local Sources		60,487	448,700		
7000	Revenue from State Sources					
8000	Revenue from Federal Sources					
Total Revenues			\$60,487	\$448,700		
Expenditures						
1000	Instruction					
2000	Support Services		184,132	237,460		
3000	Operation of Non-Instructional Services		98,444			
4000	Facilities Acquisition, Construction and Improvement Services		751,412	2,455,004		
5110	Debt Service				6,042,855	
5130	Refund of Prior Year Revenues / Receipts					
5140	Leases and Other Right-to-Use Arrangements					
Total Expenditures			\$1,033,988	\$2,692,464	\$6,042,855	
Excess (Deficiency) Of Revenues Over Expenditures			(\$973,501)	(\$2,243,764)	(\$6,042,855)	
Other Financing Sources (Uses)						
9110	Face Value of Bonds Issued			14,800,000		
9120	Proceeds from Refunding of Bonds					
9130	Bond Premiums			196,662		
9200	Proceeds from Extended Term Financing, Leases, and Other Right-to-Use Arrangements					
9300	Interfund Transfers - IN		1,106,503		6,042,855	
9400	Sale of or Compensation for Loss of Fixed Assets					
9710	Transfers from Component Units					
9720	Transfers from Primary Governments					
9910	Other Financing Sources Not Listed in the 9000 Series					
9990	Insurance Recoveries					
5120	Debt Service – Refunded Bonds					
5150	Bond Discounts					
5200	Interfund Transfers – Out					
5300	Transfers Out to Component Units/Primary Governments					
Total Other Financing Sources (Uses)			\$1,106,503	\$14,996,662	\$6,042,855	

Amounts Expressed in Whole Dollars		<u>Total Governmental Funds</u>
Revenues		
6000	Revenue from Local Sources	52,418,856
7000	Revenue from State Sources	26,169,657
8000	Revenue from Federal Sources	3,616,766
Total Revenues		\$82,205,279
Expenditures		
1000	Instruction	44,064,197
2000	Support Services	24,233,831
3000	Operation of Non-Instructional Services	2,346,703
4000	Facilities Acquisition, Construction and Improvement Services	4,328,730
5110	Debt Service	6,042,855
5130	Refund of Prior Year Revenues / Receipts	1,560
5140	Leases and Other Right-to-Use Arrangements	301,096
Total Expenditures		\$81,318,972
Excess (Deficiency) Of Revenues Over Expenditures		\$886,307
Other Financing Sources (Uses)		
9110	Face Value of Bonds Issued	14,800,000
9120	Proceeds from Refunding of Bonds	
9130	Bond Premiums	196,662
9200	Proceeds from Extended Term Financing, Leases, and Other Right-to-Use Arrangements	820,241
9300	Interfund Transfers - IN	7,206,855
9400	Sale of or Compensation for Loss of Fixed Assets	5,809
9710	Transfers from Component Units	
9720	Transfers from Primary Governments	
9910	Other Financing Sources Not Listed in the 9000 Series	
9990	Insurance Recoveries	188
5120	Debt Service – Refunded Bonds	
5150	Bond Discounts	
5200	Interfund Transfers – Out	7,149,358
5300	Transfers Out to Component Units/Primary Governments	
Total Other Financing Sources (Uses)		\$15,880,397

Amounts Expressed in Whole Dollars		<u>General Fund</u> <u>(10)</u>	<u>Student Sponsored</u> <u>Activity Fund</u> <u>(21)</u>	<u>Public Purpose Trust</u> <u>(27)</u>	<u>Other Compt Approved</u> <u>(28)</u>	<u>Athletic / Activity</u> <u>(29)</u>
Special And Extraordinary Items						
9920	Special Items – Gains					
9930	Extraordinary Items – Gains					
5520	Special Items – Losses					
5530	Extraordinary Items – Losses					
Net Change In Fund Balances		\$3,842,921	\$44,483			(\$6,600)
Fund Balance						
0001	Fund Balance - Beginning of Fiscal Year	20,919,367	503,987			55,254
Fund Balance - End Of Year		\$24,762,288	\$548,470			\$48,654

Amounts Expressed in Whole Dollars		<u>Capital Reserve (690.</u> <u>1850)</u> <u>(31)</u>	<u>Capital Reserve (1431)</u> <u>(32)</u>	<u>Other Capital Projects</u> <u>Fund</u> <u>(39)</u>	<u>Debt Service</u> <u>(40)</u>	<u>Permanent</u> <u>(90)</u>
Special And Extraordinary Items						
9920	Special Items – Gains					
9930	Extraordinary Items – Gains					
5520	Special Items – Losses					
5530	Extraordinary Items – Losses					
Net Change In Fund Balances			\$133,002	\$12,752,898		
Fund Balance						
0001	Fund Balance - Beginning of Fiscal Year		1,565,486			
Fund Balance - End Of Year			\$1,698,488	\$12,752,898		

Amounts Expressed in Whole Dollars		<u>Total Governmental</u> <u>Funds</u>
Special And Extraordinary Items		
9920	Special Items – Gains	
9930	Extraordinary Items – Gains	
5520	Special Items – Losses	
5530	Extraordinary Items – Losses	
Net Change In Fund Balances		\$16,766,704
Fund Balance		
0001	Fund Balance - Beginning of Fiscal Year	23,044,094
Fund Balance - End Of Year		\$39,810,798

LEA : 114065503 Muhlenberg SD

Printed 11/26/2024 3:34:57 PM

Amounts Expressed in Whole Dollars		<u>Food Service</u> <u>(51)</u>	<u>Child Care</u> <u>Operations</u> <u>(52)</u>	<u>Other Enterprise</u> <u>(58)</u>	<u>TOTAL</u>	<u>Internal Service</u> <u>(60)</u>
Assets And Deferred Outflows Of Resources						
Current Assets						
0100	Cash and Cash Equivalents	3,506,814			3,506,814	
0110	Investments					
0130	Due From Other Funds					
0141	Due From Other Governments					
0142	State Revenue Receivable	1,774			1,774	
0143	Federal Revenue Receivable	40,616			40,616	
0146	Due from Primary Government					
0147	Due from Component Unit					
0150	Other Receivables	867			867	
0170	Inventories	132,992			132,992	
0180	Prepaid Expenses (Expenditures)					
0190	Other Current Assets					
Total Current Assets		\$3,683,063			\$3,683,063	
Noncurrent Assets						
0211	Land					
0212	Site Improvements (Net)					
0220	Buildings and Building Improvements (Net)					
0230	Tangible Property and Intangible Right-To-Use Assets (Net)	166,490			166,490	
0250	Construction in Progress					
0260	Long Term Prepayments					
0290	Other Noncurrent Assets					
Total Noncurrent Assets		\$166,490			\$166,490	
0910	Deferred Outflows of Resources	915,759			915,759	
Total Assets And Deferred Outflows Of Resources		\$4,765,312			\$4,765,312	

LEA : 114065503 Muhlenberg SD

Printed 11/26/2024 3:34:57 PM

Amounts Expressed in Whole Dollars	<u>Food Service</u> <u>(51)</u>	<u>Child Care</u> <u>Operations</u> <u>(52)</u>	<u>Other Enterprise</u> <u>(58)</u>	<u>TOTAL</u>	<u>Internal Service</u> <u>(60)</u>
Liabilities And Deferred Inflows Of Resources And Net Position					
Current Liabilities					
0400 Due to Other Funds	23,058			23,058	
0411 Due to Other Governments					
0413 Due to Component Unit					
0420 Accounts Payable	1,649			1,649	
0430 Contracts Payable					
0440 Current Portion of Long-Term Debt					
0450 Short-Term Payables					
0461 Accrued Salaries and Benefits	8,711			8,711	
0462 Payroll Deductions and Withholding					
0480 Unearned Revenues	58,649			58,649	
0490 Other Current Liabilities					
Total Current Liabilities	\$92,067			\$92,067	
Noncurrent Liabilities					
0510 Bonds Payable					
0520 Extended-Term Financing Agreements Payable					
0530 Lease and Other Right-To-Use Obligations					
0540 Accumulated Compensated Absences	15,766			15,766	
0550 Authority Lease Obligations					
0560 Other Post-Employment Benefits (OPEB)	150,889			150,889	
0570 Net Pension Liability	2,816,418			2,816,418	
0599 Other Noncurrent Liabilities					
Total Noncurrent Liabilities	\$2,983,073			\$2,983,073	
Total Liabilities	\$3,075,140			\$3,075,140	
0950 Deferred Inflows of Resources	129,613			129,613	
Net Position					
0791 Net Investment in Capital Assets	166,490			166,490	
0008 Restricted Net Position (0792 – 0798)					
0799 Unrestricted Net Position	1,394,069			1,394,069	
Total Net Position	\$1,560,559			\$1,560,559	
Total Liabilities And Deferred Inflows Of Resources And Net Position	\$4,765,312			\$4,765,312	

Amounts Expressed in Whole Dollars		<u>Food Service</u> <u>(51)</u>	<u>Child Care Operations</u> <u>(52)</u>	<u>Other Enterprise</u> <u>(58)</u>	<u>TOTAL</u>	<u>Internal Service</u> <u>(60)</u>
Operating Revenues						
6600	Food Service Revenue	127,413			127,413	
0071	Charges for Services					
0072	Other Operating Revenue					
Total Operating Revenues		\$127,413			\$127,413	
Operating Expenses						
100	Personnel Services – Salaries	1,108,237			1,108,237	
200	Personnel Services – Employee Benefits	556,813			556,813	
300	Purchased Professional and Technical Services	5,140			5,140	
400	Purchased Property Services	62,257			62,257	
500	Other Purchased Services	10,248			10,248	
600	Supplies	1,582,547			1,582,547	
740	Depreciation	14,229			14,229	
770	Amortization Expense					
810	Dues and Fees	1,321			1,321	
880	Refunds of Prior Years' Receipts					
890	Miscellaneous Expenditures	4,090			4,090	
Total Operating Expenses		\$3,344,882			\$3,344,882	
Operating Income (Loss)		(\$3,217,469)			(\$3,217,469)	
Non Operating Revenues (Expenses)						
6500	Earnings on Investments	84,356			84,356	
6830	Federal Revenue from Intermediary Sources					
6920	Contributions and Donations from Private Sources					
6930	Gains or Losses on Sale of Fixed Assets					
6991	Refunds of a Prior Year Expenditure					
7000	Revenue from State Sources	458,808			458,808	
8000	Revenue from Federal Sources	3,423,627			3,423,627	
9990	Insurance Recoveries					
820	Claims and Judgments Against the LEA					
830	Interest					
TOTAL Non Operating Revenues (Expenses)		\$3,966,791			\$3,966,791	
Income (Loss) Before Contributions And Transfers		\$749,322			\$749,322	

Amounts Expressed in Whole Dollars	<u>Food Service</u> <u>(51)</u>	<u>Child Care Operations</u> <u>(52)</u>	<u>Other Enterprise</u> <u>(58)</u>	<u>TOTAL</u>	<u>Internal Service</u> <u>(60)</u>
Contributions, Transfers, and Special and Extraordinary Items					
5200 Interfund Transfers – Out	57,497			57,497	
5300 Transfers Out to Component Units/Primary Governments					
5520 Special Items – Losses					
5530 Extraordinary Items – Losses					
9300 Interfund Transfers - IN					
9500 Capital Contributions					
9700 Transfers IN From Component Units/Primary Governments					
9920 Special Items – Gains					
9930 Extraordinary Items – Gains					
Change In Net Position	\$691,825			\$691,825	
0002 Net Position - Beginning of Fiscal Year	868,734			868,734	
0003 Accounting Changes / Residual Equity Transfers					
Net Position - End Of Year	\$1,560,559			\$1,560,559	

LEA : 114065503 Muhlenberg SD

Printed 11/26/2024 3:35:19 PM

Amounts Expressed in Whole Dollars		<u>Food Service</u> <u>(51)</u>	<u>Child Care Operations</u> <u>(52)</u>	<u>Other Enterprise</u> <u>(58)</u>	<u>TOTAL</u>	<u>Internal Service(60)</u>
Cash Flows From Operating Activities						
0011	Cash Receipts From Users	129,879			129,879	
0012	Cash Receipts From Assessments Made to Other Funds					
0013	Cash Receipts From Earnings on Investments					
0014	Cash Receipts From Other Operating Revenue					
0015	Cash Payments To Employees For Services	1,671,213			1,671,213	
0016	Cash Payments For Insurance Claims					
0017	Cash Payments To Suppliers For Goods and Services	1,510,289			1,510,289	
0018	Cash Payments For Other Operating Expenses					
Net Cash Provided By (Used For) Operating Activities		(\$3,051,623)			(\$3,051,623)	
Cash Flows From Non-Capital Financing Activities						
0021	Receipts From Local Sources - 6000					
0022	Receipts From State Sources - 7000	458,582			458,582	
0023	Receipts From Federal Sources -8000	3,261,401			3,261,401	
0024	Notes and Loans Received (Repaid)					
0025	Interest Paid on Notes/Loans - 5100-830					
0026	Operating Transfers In (Out)/Residual Equity Trans					
0027	Operating Transfers In (Out) Primary Government / Comp Unit	(57,497)			(57,497)	
0028	Receipts From Refund of Prior Year Expenditures - 6991					
0029	Special and Extraordinary Gains (losses)					
0030	Receipts from Insurance Recoveries -9990					
Net Cash Prov By (Used for) Non-Capital Financing Activities		\$3,662,486			\$3,662,486	
Cash Flows From Capital and Related Financing Activities						
0031	Payments For Fac Acq, Const, and Imp - 4000	(20,159)			(20,159)	
0032	Proceeds from Disposal of Capital Assets					
0033	Proceeds From Extended Term Financing - 9200					
0034	Principal Paid on Financing Agreements					
0035	Interest Paid on Financing Agreements - 5100-830					
0036	(Inc) Dec in Contributed Capital					
Net Cash Prov By (Used for) Capital and Related Financing Activities		(\$20,159)			(\$20,159)	
Cash Flows From Investing Activities						
0041	Earnings on Investments - 6500	84,356			84,356	
0042	Purchase of Inv Securities / Deposits to Inv Pools					
0043	Receipts From Investment Pool Withdrawals					
0044	Proceeds from Sale and Maturity of Inv Securities					

LEA : 114065503 Muhlenberg SD

Printed 11/26/2024 3:35:19 PM

0045 Loans Received (Paid)

Net Cash Prov By (Used for) Investing Activities	\$84,356	\$84,356
--	----------	----------

LEA : 114065503 Muhlenberg SD

Printed 11/26/2024 3:35:19 PM

	<u>Food Service</u> <u>(51)</u>	<u>Child Care Operations</u> <u>(52)</u>	<u>Other Enterprise</u> <u>(58)</u>	<u>TOTAL</u>	<u>Internal Service</u> <u>(60)</u>
Net Increase (Decrease) in Cash Flows	675,060			675,060	
0004 Cash and Cash Equivalents Beginning of Year	2,831,754			2,831,754	
Cash and Cash Equivalents at Year End	\$3,506,814			\$3,506,814	
Reconciliation of Operating Income (Loss) To Net Cash Provided by (Used For) Operating Activities					
0005 Operating Income (Loss) per REP	(3,217,469)			(3,217,469)	
Adjustments					
0051 Depreciation and Net Amortization	14,229			14,229	
0052 Provision for Uncollectible Accounts					
0053 Other Adjustments	163,567			163,567	
Effect of Changes in Assets, Liabilities, Deferred Outflows and Deferred Inflows					
0054 (Inc) Dec In Accounts Receivable (0120-0150)	6,103			6,103	
0055 Advances to Other Funds	9,788			9,788	
0056 (Inc) Dec in Inventories (0170)	(19,052)			(19,052)	
0057 (Inc) Dec in Prepaid Expenses (0180)	6,806			6,806	
0058 (Inc) Dec in Other Current or Noncurrent Assets					
0064 Deferred Outflows (0910)	(268,800)			(268,800)	
0059 Inc (Dec) in Accounts Payable (0400-0450)	(3,166)			(3,166)	
0060 Inc (Dec) in Accrued Salaries/Benefits (0461)	789			789	
0065 Inc (Dec) in Net Pension Liabilities (0570)	259,983			259,983	
0066 Inc (Dec) in Other Postemp Benefit Oblig (0560)	3,703			3,703	
0061 Inc (Dec) in Payroll Deductions/Withholding (0462)					
0062 Inc (Dec) in Unearned Revenue (0480)	3,522			3,522	
0063 Inc (Dec) in Other Current or Noncurrent Liabilities	1,285			1,285	
0067 Deferred Inflows (0950)	(12,911)			(12,911)	
Total Adjustments	\$165,846			\$165,846	
Cash Provided By (Used for) Total	(\$3,051,623)			(\$3,051,623)	

COMBINED STATEMENT OF CASH FLOWS
SCHEDULE OF NONCASH INVESTING, CAPITAL, AND FINANCING ACTIVITIES

Explanation of Transaction and Balance Sheet Effect	Amount
The District used commodities from the US Dept of Agriculture	163,567
Total	\$163,567

	Revenue Reported In Current Year	Current Year Tax Accrual	Prior Year Tax Accrual	Taxes Collected In Current Year
Revenue from Local Sources				
6111 Current Real Estate Taxes	41,171,360.64			41,171,360.64
6112 Interim Real Estate Taxes	84,298.57			84,298.57
6113 Public Utility Realty Taxes	39,604.04			39,604.04
6114 Payments in Lieu of Current Taxes - State / Local	8,482.80			8,482.80
6143 Current Act 511 Local Services Taxes	82,163.30	731.32	420.25	81,852.23
6151 Current Act 511 Earned Income Taxes	4,067,350.30	201,067.58	187,249.80	4,053,532.52
6153 Current Act 511 Real Estate Transfer Taxes	660,803.28	32,361.92	42,581.22	671,022.58
6157 Current Act 511 Mercantile Taxes	1,272,765.81	838.31	1,027.50	1,272,955.00
6411 Delinquent Real Estate Taxes	920,199.30	668,419.61	511,607.42	763,387.11
6500 Earnings on Investments	2,294,741.03			
6700 Revenues from LEA Activities	25,775.00			
6832 Federal IDEA Revenue Received as Pass Through	854,174.58			
6910 Rentals	6,367.24			
6920 Contributions and Donations from Private Sources	2,300.00			
6991 Refunds of a Prior Year Expenditure	12,647.75			
6992 Energy Efficiency Revenues and Incentives	13,657.69			
6999 Other Revenues Not Specified Above	49,017.94			
TOTAL Revenue from Local Sources	\$51,565,709.27	\$903,418.74	\$742,886.19	\$48,146,495.49

	Revenue Reported In Current Year			
<u>Revenue from State Sources</u>				
7111 Basic Education Funding-Formula	10,031,626.07			
7160 Tuition for Orphans Subsidy	40,020.17			
7250 Migratory Children	280.00			
7271 Special Education funds for School-Aged Pupils	2,693,752.42			
7311 Pupil Transportation Subsidy	758,892.80			
7312 Nonpublic and Charter School Pupil Transportation Subsidy	79,310.00			
7320 Rental and Sinking Fund Payments / Building Reimbursement Subsidy	772,181.13			
7330 Health Services (Medical, Dental, Nurse, Act 25)	79,616.28			
7340 State Property Tax Reduction Allocation	1,511,082.87			
7362 School Mental Health & Safety and Security Grants	234,783.00			
7505 Ready to Learn Block Grant	947,941.00			
7599 Other State Revenue Not Listed Elsewhere in the 7000 Series	250,000.00			
7810 State Share of Social Security and Medicare Taxes	1,595,157.87			
7820 State Share of Retirement Contributions	7,175,012.92			
TOTAL Revenue from State Sources	\$26,169,656.53			

	Revenue Reported In Current Year			
<u>Revenue from Federal Sources</u>				
8390 Other Restricted Federal Grants-in-Aid Directly from the Federal Government	68,738.78			
8514 Title I - Improving the Academic Achievement of the Disadvantaged	1,028,268.75			
8515 Title II - Preparing, Training, and Recruiting High Quality Teachers and Principals	149,971.20			
8516 Title III - Language Instruction for English Learners and Immigrant Students	79,664.00			
8517 Title IV - 21st Century Schools	60,220.00			
8743 ESSER II - Elementary and Secondary School Emergency Relief Fund	211,314.59			
8744 ARP ESSER - Elementary and Secondary School Emergency Relief Fund	1,712,345.57			
8751 ARP ESSER Learning Loss	72,538.19			
8754 ARP ESSER Homeless Children and Youth Funds	13,687.17			
8810 School-Based Access Medicaid Reimbursement Program (SBAP) Reimbursements (Access)	212,135.71			
8820 Medical Assistance Reimbursement for Administrative Claiming (Quarterly) Program	7,882.20			
TOTAL Revenue from Federal Sources	\$3,616,766.16			

					Revenue Reported In Current Year
<u>Other Financing Sources</u>					
9220	Leases and Other Right-to-Use Arrangements		820,241.44		
9350	Enterprise Fund Transfers		57,496.62		
9400	Sale of or Compensation for Loss of Fixed Assets		5,809.44		
9990	Insurance Recoveries		187.77		
TOTAL Other Financing Sources			\$883,735.27		
TOTAL FROM ALL SOURCES			\$82,235,867.23	\$903,418.74	\$742,886.19
					\$48,146,495.49

LEA : 114065503 Muhlenberg SD

Printed 11/26/2024 3:35:26 PM

	<u>General Fund (10)</u>	<u>Student Sponsored Activity Fund (21)</u>	<u>Public Purpose Trust (27)</u>	<u>Other Compt Approved (28)</u>	<u>Athletic / Activity (29)</u>	<u>Capital Reserve (690, 1850) (31)</u>
6000 Revenue from Local Sources						
6111 Current Real Estate Taxes	41,171,360.64					
6112 Interim Real Estate Taxes	84,298.57					
6113 Public Utility Realty Taxes	39,604.04					
6114 Payments in Lieu of Current Taxes - State / Local	8,482.80					
6143 Current Act 511 Local Services Taxes	82,163.30					
6151 Current Act 511 Earned Income Taxes	4,067,350.30					
6153 Current Act 511 Real Estate Transfer Taxes	660,803.28					
6157 Current Act 511 Mercantile Taxes	1,272,765.81					
6411 Delinquent Real Estate Taxes	920,199.30					
6500 Earnings on Investments	2,294,741.03	23,480.76			941.34	
6700 Revenues from LEA Activities	25,775.00	220,219.30			65,161.00	
6832 Federal IDEA Revenue Received as Pass Through	854,174.58					
6910 Rentals	6,367.24					
6920 Contributions and Donations from Private Sources	2,300.00	34,157.70				
6991 Refunds of a Prior Year Expenditure	12,647.75					
6992 Energy Efficiency Revenues and Incentives	13,657.69					
6999 Other Revenues Not Specified Above	49,017.94					
6000 Total Revenue from Local Sources	\$51,565,709.27	\$277,857.76			\$66,102.34	
7000 Revenue from State Sources						
7111 Basic Education Funding-Formula	10,031,626.07					
7160 Tuition for Orphans Subsidy	40,020.17					
7250 Migratory Children	280.00					
7271 Special Education funds for School-Aged Pupils	2,693,752.42					
7311 Pupil Transportation Subsidy	758,892.80					
7312 Nonpublic and Charter School Pupil Transportation Subsidy	79,310.00					
7320 Rental and Sinking Fund Payments / Building Reimbursement Subsidy	772,181.13					
7330 Health Services (Medical, Dental, Nurse, Act 25)	79,616.28					
7340 State Property Tax Reduction Allocation	1,511,082.87					
7362 School Mental Health & Safety and Security Grants	234,783.00					
7505 Ready to Learn Block Grant	947,941.00					
7599 Other State Revenue Not Listed Elsewhere in the 7000 Series	250,000.00					
7810 State Share of Social Security and Medicare Taxes	1,595,157.87					
7820 State Share of Retirement Contributions	7,175,012.92					
7000 Total Revenue from State Sources	\$26,169,656.53					

LEA : 114065503 Muhlenberg SD

Printed 11/26/2024 3:35:26 PM

	<u>Capital Reserve</u> <u>(1431) (32)</u>	<u>Other Capital</u> <u>Projects Fund (39)</u>	<u>Debt Service (40)</u>	<u>Permanent (90)</u>	<u>Total</u>
6000 Revenue from Local Sources					
6111 Current Real Estate Taxes					41,171,360.64
6112 Interim Real Estate Taxes					84,298.57
6113 Public Utility Realty Taxes					39,604.04
6114 Payments in Lieu of Current Taxes - State / Local					8,482.80
6143 Current Act 511 Local Services Taxes					82,163.30
6151 Current Act 511 Earned Income Taxes					4,067,350.30
6153 Current Act 511 Real Estate Transfer Taxes					660,803.28
6157 Current Act 511 Mercantile Taxes					1,272,765.81
6411 Delinquent Real Estate Taxes					920,199.30
6500 Earnings on Investments	60,486.59	448,699.61			2,828,349.33
6700 Revenues from LEA Activities					311,155.30
6832 Federal IDEA Revenue Received as Pass Through					854,174.58
6910 Rentals					6,367.24
6920 Contributions and Donations from Private Sources					36,457.70
6991 Refunds of a Prior Year Expenditure					12,647.75
6992 Energy Efficiency Revenues and Incentives					13,657.69
6999 Other Revenues Not Specified Above					49,017.94
6000 Total Revenue from Local Sources	\$60,486.59	\$448,699.61			\$52,418,855.57
7000 Revenue from State Sources					
7111 Basic Education Funding-Formula					10,031,626.07
7160 Tuition for Orphans Subsidy					40,020.17
7250 Migratory Children					280.00
7271 Special Education funds for School-Aged Pupils					2,693,752.42
7311 Pupil Transportation Subsidy					758,892.80
7312 Nonpublic and Charter School Pupil Transportation Subsidy					79,310.00
7320 Rental and Sinking Fund Payments / Building Reimbursement Subsidy					772,181.13
7330 Health Services (Medical, Dental, Nurse, Act 25)					79,616.28
7340 State Property Tax Reduction Allocation					1,511,082.87
7362 School Mental Health & Safety and Security Grants					234,783.00
7505 Ready to Learn Block Grant					947,941.00
7599 Other State Revenue Not Listed Elsewhere in the 7000 Series					250,000.00
7810 State Share of Social Security and Medicare Taxes					1,595,157.87
7820 State Share of Retirement Contributions					7,175,012.92
7000 Total Revenue from State Sources					\$26,169,656.53

LEA : 114065503 Muhlenberg SD

Printed 11/26/2024 3:35:26 PM

	<u>General Fund (10)</u>	<u>Student Sponsored Activity Fund (21)</u>	<u>Public Purpose Trust (27)</u>	<u>Other Compt Approved (28)</u>	<u>Athletic / Activity (29)</u>	<u>Capital Reserve (690, 1850) (31)</u>
8000 Revenue from Federal Sources						
8390 Other Restricted Federal Grants-in-Aid Directly from the Federal Government	68,738.78					
8514 Title I - Improving the Academic Achievement of the Disadvantaged	1,028,268.75					
8515 Title II - Preparing, Training, and Recruiting High Quality Teachers and Principals	149,971.20					
8516 Title III - Language Instruction for English Learners and Immigrant Students	79,664.00					
8517 Title IV - 21st Century Schools	60,220.00					
8743 ESSER II - Elementary and Secondary School Emergency Relief Fund	211,314.59					
8744 ARP ESSER - Elementary and Secondary School Emergency Relief Fund	1,712,345.57					
8751 ARP ESSER Learning Loss	72,538.19					
8754 ARP ESSER Homeless Children and Youth Funds	13,687.17					
8810 School-Based Access Medicaid Reimbursement Program (SBAP) Reimbursements (Access)	212,135.71					
8820 Medical Assistance Reimbursement for Administrative Claiming (Quarterly) Program	7,882.20					
8000 Total Revenue from Federal Sources	\$3,616,766.16					
9000 Other Financing Sources						
9110 Face Value of Bonds Issued						
9130 Bond Premiums						
9220 Leases and Other Right-to-Use Arrangements	820,241.44					
9310 General Fund Transfers						
9350 Enterprise Fund Transfers	57,496.62					
9400 Sale of or Compensation for Loss of Fixed Assets	5,809.44					
9990 Insurance Recoveries	187.77					
9000 Total Other Financing Sources	\$883,735.27					
Total From All Sources	\$82,235,867.23	\$277,857.76			\$66,102.34	

LEA : 114065503 Muhlenberg SD

Printed 11/26/2024 3:35:26 PM

	<u>Capital Reserve</u> <u>(1431) (32)</u>	<u>Other Capital</u> <u>Projects Fund (39)</u>	<u>Debt Service (40)</u>	<u>Permanent (90)</u>	<u>Total</u>
8000 Revenue from Federal Sources					
8390 Other Restricted Federal Grants-in-Aid Directly from the Federal Government					68,738.78
8514 Title I - Improving the Academic Achievement of the Disadvantaged					1,028,268.75
8515 Title II - Preparing, Training, and Recruiting High Quality Teachers and Principals					149,971.20
8516 Title III - Language Instruction for English Learners and Immigrant Students					79,664.00
8517 Title IV - 21st Century Schools					60,220.00
8743 ESSER II - Elementary and Secondary School Emergency Relief Fund					211,314.59
8744 ARP ESSER - Elementary and Secondary School Emergency Relief Fund					1,712,345.57
8751 ARP ESSER Learning Loss					72,538.19
8754 ARP ESSER Homeless Children and Youth Funds					13,687.17
8810 School-Based Access Medicaid Reimbursement Program (SBAP) Reimbursements (Access)					212,135.71
8820 Medical Assistance Reimbursement for Administrative Claiming (Quarterly) Program					7,882.20
8000 Total Revenue from Federal Sources					\$3,616,766.16
9000 Other Financing Sources					
9110 Face Value of Bonds Issued		14,800,000.00			14,800,000.00
9130 Bond Premiums		196,662.00			196,662.00
9220 Leases and Other Right-to-Use Arrangements					820,241.44
9310 General Fund Transfers	1,106,503.00		6,042,855.00		7,149,358.00
9350 Enterprise Fund Transfers					57,496.62
9400 Sale of or Compensation for Loss of Fixed Assets					5,809.44
9990 Insurance Recoveries					187.77
9000 Total Other Financing Sources	\$1,106,503.00	\$14,996,662.00	\$6,042,855.00		\$23,029,755.27
Total From All Sources	\$1,166,989.59	\$15,445,361.61	\$6,042,855.00		\$105,235,033.53

LEA : 114065503 Muhlenberg SD

Printed 11/26/2024 3:35:31 PM

	<u>General Fund (10)</u>	<u>Student Sponsored Activity Fund (21)</u>	<u>Public Purpose Trust (27)</u>	<u>Other Compt Approved (28)</u>	<u>Athletic / Activity (29)</u>	<u>Capital Reserve (690. 1850) (31)</u>
Revenue from Local Sources	51,565,709.27	277,857.76			66,102.34	
Revenue from State Sources	26,169,656.53					
Revenue from Federal Sources	3,616,766.16					
Other Financing Sources	883,735.27					
Total From All Sources	\$82,235,867.23	\$277,857.76			\$66,102.34	

LEA : 114065503 Muhlenberg SD

Printed 11/26/2024 3:35:31 PM

	<u>Capital Reserve (1431)</u> <u>(32)</u>	<u>Other Capital Projects</u> <u>Fund (39)</u>	<u>Debt Service (40)</u>	<u>Permanent (90)</u>	<u>Total</u>
Revenue from Local Sources	60,486.59	448,699.61			52,418,855.57
Revenue from State Sources					26,169,656.53
Revenue from Federal Sources					3,616,766.16
Other Financing Sources	1,106,503.00	14,996,662.00	6,042,855.00		23,029,755.27
Total From All Sources	\$1,166,989.59	\$15,445,361.61	\$6,042,855.00		\$105,235,033.53

LEA : 114065503 Muhlenberg SD

Printed 11/26/2024 3:35:39 PM

General Fund (10)

1000 Instruction		Total
100 <u>Personnel Services – Salaries</u>		
100 Personnel Services – Salaries		21,369,598.07
Total Personnel Services – Salaries		\$21,369,598.07
200 <u>Personnel Services – Employee Benefits</u>		
210 Group Insurance – Contracted Provider		3,981,924.69
220 Social Security Contributions		1,579,896.13
230 PSERS Retirement Contributions		7,134,178.99
250 Unemployment Compensation		16,848.45
260 Workers' Compensation		162,736.83
Total Personnel Services – Employee Benefits		\$12,875,585.09
300 <u>Purchased Professional and Technical Services</u>		
322 Professional Educational Services – Ius		733,057.89
323 Professional Educational Services – Other Educational Agencies		345,272.35
329 Professional Educational Services – Other		1,157,100.36
330 Other Professional Services		6,537.00
390 Other Purchased Professional and Technical Services		1,800.00
Total Purchased Professional and Technical Services		\$2,243,767.60
400 <u>Purchased Property Services</u>		
430 Repairs and Maintenance Services		80,335.68
440 Rentals		22,154.59
Total Purchased Property Services		\$102,490.27
500 <u>Other Purchased Services</u>		
510 Student Transportation Services		75,587.07
550 Printing and Binding		4,665.72
561 Tuition To Other School Districts Within the State		82,485.40
562 Tuition To Pennsylvania Charter Schools		1,402,514.85
563 Tuition To Nonpublic Schools		1,172,718.37
564 Tuition To Career and Technology Centers		2,572,417.69
567 Tuition To Approved Private Schools (APS) and PA Chartered Schools for the Deaf and Blind		82,134.97
568 Tuition To Private Residential Rehabilitative Institutions (PRRI) [In-State] and Detention Centers		106,941.94
580 Travel		4,205.21
591 Services Purchased Locally		22,955.00
Total Other Purchased Services		\$5,526,626.22
600 <u>Supplies</u>		
610 General Supplies		1,260,247.12
630 Food		1,973.09
640 Books and Periodicals		17,015.40
650 Supplies & Fees – Technology Related		583,268.71
Total Supplies		\$1,862,504.32
700 <u>Property</u>		
738 Technology Software Lease and Other Right-to-Use Arrangements		70,794.69
752 Capital Equipment – Original and Additional		10,938.35
Total Property		\$81,733.04

LEA : 114065503 Muhlenberg SD

Printed 11/26/2024 3:35:39 PM

General Fund (10)		
1000 Instruction		<u>Total</u>
800 <u>Other Objects</u>		
810 Dues and Fees		1,322.00
890 Miscellaneous Expenditures		570.00
Total Other Objects		\$1,892.00
Total 1000 Instruction		\$44,064,196.61

LEA : 114065503 Muhlenberg SD

Printed 11/26/2024 3:35:39 PM

General Fund (10)

1100 Regular Programs – Elementary / Secondary

	Elementary	Secondary	Federal	Total
100 Personnel Services – Salaries				
100 Personnel Services – Salaries	6,839,513.36	7,624,854.12	890,936.59	15,355,304.07
Total Personnel Services – Salaries	\$6,839,513.36	\$7,624,854.12	\$890,936.59	\$15,355,304.07
200 Personnel Services – Employee Benefits				
210 Group Insurance – Contracted Provider	1,245,674.99	1,348,532.88	79,055.19	2,673,263.06
220 Social Security Contributions	562,110.57	567,784.32	4,365.36	1,134,260.25
230 PSERS Retirement Contributions	2,562,471.87	2,582,394.31	19,915.65	5,164,781.83
250 Unemployment Compensation	5,625.30	5,625.30		11,250.60
260 Workers' Compensation	54,333.94	54,333.95		108,667.89
Total Personnel Services – Employee Benefits	\$4,430,216.67	\$4,558,670.76	\$103,336.20	\$9,092,223.63
300 Purchased Professional and Technical Services				
322 Professional Educational Services – lus	450.00	3,490.00		3,940.00
323 Professional Educational Services – Other Educational Agencies	22,100.00	318,642.98		340,742.98
329 Professional Educational Services – Other	374,191.47	645,290.64	5,500.00	1,024,982.11
390 Other Purchased Professional and Technical Services	1,800.00			1,800.00
Total Purchased Professional and Technical Services	\$398,541.47	\$967,423.62	\$5,500.00	\$1,371,465.09
400 Purchased Property Services				
430 Repairs and Maintenance Services	36,806.61	37,995.44		74,802.05
440 Rentals	17,166.90	4,987.69		22,154.59
Total Purchased Property Services	\$53,973.51	\$42,983.13		\$96,956.64
500 Other Purchased Services				
510 Student Transportation Services	148.60	837.13		985.73
550 Printing and Binding		2,740.00	1,925.72	4,665.72
561 Tuition To Other School Districts Within the State		82.41		82.41
562 Tuition To Pennsylvania Charter Schools	192,441.63	431,736.85		624,178.48
563 Tuition To Nonpublic Schools	1,288.36	786.39		2,074.75
568 Tuition To Private Residential Rehabilitative Institutions (PRRI) [In-State] and Detention Centers	36,267.29	70,674.65		106,941.94
591 Services Purchased Locally	50.00			50.00
Total Other Purchased Services	\$230,195.88	\$506,857.43	\$1,925.72	\$738,979.03
600 Supplies				
610 General Supplies	82,191.71	164,562.39	990,210.26	1,236,964.36
630 Food			804.70	804.70
640 Books and Periodicals	108.50	16,486.95		16,595.45
650 Supplies & Fees – Technology Related	307,722.23	109,844.01	142,869.59	560,435.83
Total Supplies	\$390,022.44	\$290,893.35	\$1,133,884.55	\$1,814,800.34
700 Property				
738 Technology Software Lease and Other Right-to-Use Arrangements		70,794.69		70,794.69
752 Capital Equipment – Original and Additional		5,259.25		5,259.25
Total Property		\$76,053.94		\$76,053.94
800 Other Objects				
890 Miscellaneous Expenditures		570.00		570.00

LEA : 114065503 Muhlenberg SD

Printed 11/26/2024 3:35:39 PM

General Fund (10)

1100 Regular Programs – Elementary / Secondary

	<u>Elementary</u>	<u>Secondary</u>	<u>Federal</u>	<u>Total</u>
Total Other Objects		\$570.00		\$570.00
Total 1100 Regular Programs – Elementary / Secondary	\$12,342,463.33	\$14,068,306.35	\$2,135,583.06	\$28,546,352.74

LEA : 114065503 Muhlenberg SD

Printed 11/26/2024 3:35:39 PM

General Fund (10)

1110 Regular Programs

	Elementary	Secondary	Federal	Total
100 <u>Personnel Services – Salaries</u>				
100 Personnel Services – Salaries	6,839,513.36	7,624,854.12		14,464,367.48
Total Personnel Services – Salaries	\$6,839,513.36	\$7,624,854.12		\$14,464,367.48
200 <u>Personnel Services – Employee Benefits</u>				
210 Group Insurance – Contracted Provider	1,245,674.99	1,348,532.88		2,594,207.87
220 Social Security Contributions	562,110.57	567,784.32		1,129,894.89
230 PSERS Retirement Contributions	2,562,471.87	2,582,394.31		5,144,866.18
250 Unemployment Compensation	5,625.30	5,625.30		11,250.60
260 Workers' Compensation	54,333.94	54,333.95		108,667.89
Total Personnel Services – Employee Benefits	\$4,430,216.67	\$4,558,670.76		\$8,988,887.43
300 <u>Purchased Professional and Technical Services</u>				
322 Professional Educational Services – lus	450.00	3,490.00		3,940.00
323 Professional Educational Services – Other Educational Agencies	22,100.00	318,642.98		340,742.98
329 Professional Educational Services – Other	374,191.47	645,290.64		1,019,482.11
390 Other Purchased Professional and Technical Services	1,800.00			1,800.00
Total Purchased Professional and Technical Services	\$398,541.47	\$967,423.62		\$1,365,965.09
400 <u>Purchased Property Services</u>				
430 Repairs and Maintenance Services	36,806.61	37,995.44		74,802.05
440 Rentals	17,166.90	4,987.69		22,154.59
Total Purchased Property Services	\$53,973.51	\$42,983.13		\$96,956.64
500 <u>Other Purchased Services</u>				
510 Student Transportation Services	148.60	837.13		985.73
550 Printing and Binding		2,740.00		2,740.00
561 Tuition To Other School Districts Within the State		82.41		82.41
562 Tuition To Pennsylvania Charter Schools	192,441.63	431,736.85		624,178.48
563 Tuition To Nonpublic Schools	1,288.36	786.39		2,074.75
568 Tuition To Private Residential Rehabilitative Institutions (PRRI) [In-State] and Detention Centers	36,267.29	70,674.65		106,941.94
591 Services Purchased Locally	50.00			50.00
Total Other Purchased Services	\$230,195.88	\$506,857.43		\$737,053.31
600 <u>Supplies</u>				
610 General Supplies	82,191.71	164,562.39		246,754.10
640 Books and Periodicals	108.50	16,486.95		16,595.45
650 Supplies & Fees – Technology Related	307,722.23	109,844.01		417,566.24
Total Supplies	\$390,022.44	\$290,893.35		\$680,915.79
700 <u>Property</u>				
738 Technology Software Lease and Other Right-to-Use Arrangements		70,794.69		70,794.69
752 Capital Equipment – Original and Additional		5,259.25		5,259.25
Total Property		\$76,053.94		\$76,053.94
800 <u>Other Objects</u>				
890 Miscellaneous Expenditures		570.00		570.00
Total Other Objects		\$570.00		\$570.00
Total 1110 Regular Programs	\$12,342,463.33	\$14,068,306.35		\$26,410,769.68

LEA : 114065503 Muhlenberg SD

Printed 11/26/2024 3:35:39 PM

General Fund (10)

1190 Federally-Funded Regular Programs	<u>Elementary</u>	<u>Secondary</u>	<u>Federal</u>	<u>Total</u>
100 <u>Personnel Services – Salaries</u>				
100 Personnel Services – Salaries			890,936.59	890,936.59
Total Personnel Services – Salaries			\$890,936.59	\$890,936.59
200 <u>Personnel Services – Employee Benefits</u>				
210 Group Insurance – Contracted Provider			79,055.19	79,055.19
220 Social Security Contributions			4,365.36	4,365.36
230 PSERS Retirement Contributions			19,915.65	19,915.65
Total Personnel Services – Employee Benefits			\$103,336.20	\$103,336.20
300 <u>Purchased Professional and Technical Services</u>				
329 Professional Educational Services – Other			5,500.00	5,500.00
Total Purchased Professional and Technical Services			\$5,500.00	\$5,500.00
500 <u>Other Purchased Services</u>				
550 Printing and Binding			1,925.72	1,925.72
Total Other Purchased Services			\$1,925.72	\$1,925.72
600 <u>Supplies</u>				
610 General Supplies			990,210.26	990,210.26
630 Food			804.70	804.70
650 Supplies & Fees – Technology Related			142,869.59	142,869.59
Total Supplies			\$1,133,884.55	\$1,133,884.55
Total 1190 Federally-Funded Regular Programs			\$2,135,583.06	\$2,135,583.06

LEA : 114065503 Muhlenberg SD

Printed 11/26/2024 3:35:39 PM

General Fund (10)

1200 Special Programs – Elementary / Secondary

	Elementary	Secondary	Federal	Total
100 <u>Personnel Services – Salaries</u>				
100 Personnel Services – Salaries	2,213,884.98	2,092,763.60	891,460.66	5,198,109.24
Total Personnel Services – Salaries	\$2,213,884.98	\$2,092,763.60	\$891,460.66	\$5,198,109.24
200 <u>Personnel Services – Employee Benefits</u>				
210 Group Insurance – Contracted Provider	580,928.98	560,727.81	117,537.86	1,259,194.65
220 Social Security Contributions	187,884.82	179,731.50	17,136.07	384,752.39
230 PSERS Retirement Contributions	861,243.92	814,479.98	68,734.35	1,744,458.25
250 Unemployment Compensation	2,689.16	2,689.17		5,378.33
260 Workers' Compensation	25,974.29	25,974.29		51,948.58
Total Personnel Services – Employee Benefits	\$1,658,721.17	\$1,583,602.75	\$203,408.28	\$3,445,732.20
300 <u>Purchased Professional and Technical Services</u>				
322 Professional Educational Services – lus	143,553.55	543,007.89	15,779.50	702,340.94
323 Professional Educational Services – Other Educational Agencies		929.37		929.37
329 Professional Educational Services – Other	61,109.67	71,008.58		132,118.25
330 Other Professional Services	2,717.50	3,819.50		6,537.00
Total Purchased Professional and Technical Services	\$207,380.72	\$618,765.34	\$15,779.50	\$841,925.56
400 <u>Purchased Property Services</u>				
430 Repairs and Maintenance Services	315.62	786.88		1,102.50
Total Purchased Property Services	\$315.62	\$786.88		\$1,102.50
500 <u>Other Purchased Services</u>				
510 Student Transportation Services	74.30	232.96		307.26
561 Tuition To Other School Districts Within the State		80,397.14		80,397.14
562 Tuition To Pennsylvania Charter Schools	125,178.45	653,157.92		778,336.37
563 Tuition To Nonpublic Schools	253,814.44	916,829.18		1,170,643.62
567 Tuition To Approved Private Schools (APS) and PA Chartered Schools for the Deaf and Blind		82,134.97		82,134.97
580 Travel		362.88		362.88
Total Other Purchased Services	\$379,067.19	\$1,733,115.05		\$2,112,182.24
600 <u>Supplies</u>				
610 General Supplies	2,816.86	2,689.82	2,317.22	7,823.90
630 Food	620.36			620.36
640 Books and Periodicals	270.00	149.95		419.95
650 Supplies & Fees – Technology Related	2,785.80	9,559.83	6,967.25	19,312.88
Total Supplies	\$6,493.02	\$12,399.60	\$9,284.47	\$28,177.09
700 <u>Property</u>				
752 Capital Equipment – Original and Additional			5,679.10	5,679.10
Total Property			\$5,679.10	\$5,679.10
800 <u>Other Objects</u>				
810 Dues and Fees	253.00	253.00		506.00
Total Other Objects	\$253.00	\$253.00		\$506.00
Total 1200 Special Programs – Elementary / Secondary	\$4,466,115.70	\$6,041,686.22	\$1,125,612.01	\$11,633,413.93

LEA : 114065503 Muhlenberg SD

Printed 11/26/2024 3:35:39 PM

General Fund (10)

1210 Life Skills Support

	<u>Elementary</u>	<u>Secondary</u>	<u>Federal</u>	<u>Total</u>
100 <u>Personnel Services – Salaries</u>				
100 Personnel Services – Salaries	168,492.82	299,867.84	126,089.38	594,450.04
Total Personnel Services – Salaries	\$168,492.82	\$299,867.84	\$126,089.38	\$594,450.04
200 <u>Personnel Services – Employee Benefits</u>				
210 Group Insurance – Contracted Provider	47,096.57	92,167.01	17,534.05	156,797.63
220 Social Security Contributions	12,868.95	29,170.96	1,992.03	44,031.94
230 PSERS Retirement Contributions	58,103.25	123,928.85	9,184.85	191,216.95
Total Personnel Services – Employee Benefits	\$118,068.77	\$245,266.82	\$28,710.93	\$392,046.52
300 <u>Purchased Professional and Technical Services</u>				
322 Professional Educational Services – Ius		37,080.00		37,080.00
329 Professional Educational Services – Other	17,350.00	17,350.00		34,700.00
Total Purchased Professional and Technical Services	\$17,350.00	\$54,430.00		\$71,780.00
500 <u>Other Purchased Services</u>				
563 Tuition To Nonpublic Schools		23,390.28		23,390.28
580 Travel		362.88		362.88
Total Other Purchased Services		\$23,753.16		\$23,753.16
600 <u>Supplies</u>				
610 General Supplies	13.36	862.75	456.50	1,332.61
640 Books and Periodicals	270.00	90.00		360.00
Total Supplies	\$283.36	\$952.75	\$456.50	\$1,692.61
Total 1210 Life Skills Support	\$304,194.95	\$624,270.57	\$155,256.81	\$1,083,722.33

LEA : 114065503 Muhlenberg SD

Printed 11/26/2024 3:35:39 PM

General Fund (10)

1220 Sensory Support

	<u>Elementary</u>	<u>Secondary</u>	<u>Federal</u>	<u>Total</u>
100 <u>Personnel Services – Salaries</u>				
100 Personnel Services – Salaries	174,536.58	98,501.00	23,069.70	296,107.28
Total Personnel Services – Salaries	\$174,536.58	\$98,501.00	\$23,069.70	\$296,107.28
200 <u>Personnel Services – Employee Benefits</u>				
210 Group Insurance – Contracted Provider	35,774.12	8,304.94		44,079.06
220 Social Security Contributions	14,749.06	7,437.68		22,186.74
230 PSERS Retirement Contributions	67,075.79	33,531.06		100,606.85
Total Personnel Services – Employee Benefits	\$117,598.97	\$49,273.68		\$166,872.65
300 <u>Purchased Professional and Technical Services</u>				
322 Professional Educational Services – Ius	128,328.18	210,349.46		338,677.64
330 Other Professional Services	2,607.50	3,819.50		6,427.00
Total Purchased Professional and Technical Services	\$130,935.68	\$214,168.96		\$345,104.64
400 <u>Purchased Property Services</u>				
430 Repairs and Maintenance Services	315.62	786.88		1,102.50
Total Purchased Property Services	\$315.62	\$786.88		\$1,102.50
500 <u>Other Purchased Services</u>				
562 Tuition To Pennsylvania Charter Schools	25,901.67	25,901.67		51,803.34
567 Tuition To Approved Private Schools (APS) and PA Chartered Schools for the Deaf and Blind		6,180.00		6,180.00
Total Other Purchased Services	\$25,901.67	\$32,081.67		\$57,983.34
600 <u>Supplies</u>				
610 General Supplies	700.31	673.45	222.16	1,595.92
650 Supplies & Fees – Technology Related	2,326.09	4,095.20	2,778.45	9,199.74
Total Supplies	\$3,026.40	\$4,768.65	\$3,000.61	\$10,795.66
700 <u>Property</u>				
752 Capital Equipment – Original and Additional			5,679.10	5,679.10
Total Property			\$5,679.10	\$5,679.10
800 <u>Other Objects</u>				
810 Dues and Fees	253.00	253.00		506.00
Total Other Objects	\$253.00	\$253.00		\$506.00
Total 1220 Sensory Support	\$452,567.92	\$399,833.84	\$31,749.41	\$884,151.17

LEA : 114065503 Muhlenberg SD

Printed 11/26/2024 3:35:39 PM

General Fund (10)

1230 Emotional Support

	Elementary	Secondary	Federal	Total
100 <u>Personnel Services – Salaries</u>				
100 Personnel Services – Salaries	675,684.84	308,077.74	247,781.73	1,231,544.31
Total Personnel Services – Salaries	\$675,684.84	\$308,077.74	\$247,781.73	\$1,231,544.31
200 <u>Personnel Services – Employee Benefits</u>				
210 Group Insurance – Contracted Provider	209,861.81	122,531.76	32,573.74	364,967.31
220 Social Security Contributions	58,525.21	27,668.13	5,285.83	91,479.17
230 PSERS Retirement Contributions	271,534.98	124,333.04	18,189.00	414,057.02
Total Personnel Services – Employee Benefits	\$539,922.00	\$274,532.93	\$56,048.57	\$870,503.50
300 <u>Purchased Professional and Technical Services</u>				
322 Professional Educational Services – Ius		187,193.45		187,193.45
323 Professional Educational Services – Other Educational Agencies		929.37		929.37
Total Purchased Professional and Technical Services		\$188,122.82		\$188,122.82
500 <u>Other Purchased Services</u>				
510 Student Transportation Services	74.30	232.96		307.26
561 Tuition To Other School Districts Within the State		70,861.80		70,861.80
562 Tuition To Pennsylvania Charter Schools	24,455.50	93,441.14		117,896.64
563 Tuition To Nonpublic Schools	253,814.44	816,466.98		1,070,281.42
Total Other Purchased Services	\$278,344.24	\$981,002.88		\$1,259,347.12
600 <u>Supplies</u>				
610 General Supplies	1,749.24	1,071.55		2,820.79
630 Food	620.36			620.36
650 Supplies & Fees – Technology Related	459.71			459.71
Total Supplies	\$2,829.31	\$1,071.55		\$3,900.86
Total 1230 Emotional Support	\$1,496,780.39	\$1,752,807.92	\$303,830.30	\$3,553,418.61

LEA : 114065503 Muhlenberg SD

Printed 11/26/2024 3:35:39 PM

General Fund (10)

1240 Academic Support

	Elementary	Secondary	Federal	Total
100 <u>Personnel Services – Salaries</u>				
100 Personnel Services – Salaries	1,040,140.54	1,217,782.85	444,646.45	2,702,569.84
Total Personnel Services – Salaries	\$1,040,140.54	\$1,217,782.85	\$444,646.45	\$2,702,569.84
200 <u>Personnel Services – Employee Benefits</u>				
210 Group Insurance – Contracted Provider	228,264.81	289,531.20	58,379.67	576,175.68
220 Social Security Contributions	89,343.81	101,763.29	8,636.12	199,743.22
230 PSERS Retirement Contributions	404,750.05	468,428.94	38,599.79	911,778.78
Total Personnel Services – Employee Benefits	\$722,358.67	\$859,723.43	\$105,615.58	\$1,687,697.68
300 <u>Purchased Professional and Technical Services</u>				
322 Professional Educational Services – Ius		26,947.00		26,947.00
329 Professional Educational Services – Other	2,781.25	9,534.82		12,316.07
Total Purchased Professional and Technical Services	\$2,781.25	\$36,481.82		\$39,263.07
500 <u>Other Purchased Services</u>				
561 Tuition To Other School Districts Within the State		9,535.34		9,535.34
562 Tuition To Pennsylvania Charter Schools	74,821.28	533,815.11		608,636.39
563 Tuition To Nonpublic Schools		76,971.92		76,971.92
Total Other Purchased Services	\$74,821.28	\$620,322.37		\$695,143.65
600 <u>Supplies</u>				
610 General Supplies	353.95	82.07	1,638.56	2,074.58
640 Books and Periodicals		59.95		59.95
650 Supplies & Fees – Technology Related		5,464.63	4,188.80	9,653.43
Total Supplies	\$353.95	\$5,606.65	\$5,827.36	\$11,787.96
Total 1240 Academic Support	\$1,840,455.69	\$2,739,917.12	\$556,089.39	\$5,136,462.20

LEA : 114065503 Muhlenberg SD

Printed 11/26/2024 3:35:39 PM

General Fund (10)

1241 Learning Support – Public	Elementary	Secondary	Federal	Total
100 Personnel Services – Salaries				
100 Personnel Services – Salaries	967,408.54	1,138,852.01	444,646.45	2,550,907.00
Total Personnel Services – Salaries	\$967,408.54	\$1,138,852.01	\$444,646.45	\$2,550,907.00
200 Personnel Services – Employee Benefits				
210 Group Insurance – Contracted Provider	207,067.66	279,536.42	58,379.67	544,983.75
220 Social Security Contributions	84,002.24	95,827.96	8,636.12	188,466.32
230 PSERS Retirement Contributions	380,021.17	441,735.22	38,599.79	860,356.18
Total Personnel Services – Employee Benefits	\$671,091.07	\$817,099.60	\$105,615.58	\$1,593,806.25
300 Purchased Professional and Technical Services				
322 Professional Educational Services – Ius		26,947.00		26,947.00
329 Professional Educational Services – Other	2,781.25	9,534.82		12,316.07
Total Purchased Professional and Technical Services	\$2,781.25	\$36,481.82		\$39,263.07
500 Other Purchased Services				
561 Tuition To Other School Districts Within the State		9,535.34		9,535.34
562 Tuition To Pennsylvania Charter Schools	74,821.28	533,815.11		608,636.39
563 Tuition To Nonpublic Schools		76,971.92		76,971.92
Total Other Purchased Services	\$74,821.28	\$620,322.37		\$695,143.65
600 Supplies				
610 General Supplies	353.95	82.07	1,638.56	2,074.58
640 Books and Periodicals		59.95		59.95
650 Supplies & Fees – Technology Related		5,464.63	4,188.80	9,653.43
Total Supplies	\$353.95	\$5,606.65	\$5,827.36	\$11,787.96
Total 1241 Learning Support – Public	\$1,716,456.09	\$2,618,362.45	\$556,089.39	\$4,890,907.93

LEA : 114065503 Muhlenberg SD

Printed 11/26/2024 3:35:39 PM

General Fund (10)

1243 Gifted Support

	<u>Elementary</u>	<u>Secondary</u>	<u>Federal</u>	<u>Total</u>
100 <u>Personnel Services – Salaries</u>				
100 Personnel Services – Salaries	72,732.00	78,930.84		151,662.84
Total Personnel Services – Salaries	\$72,732.00	\$78,930.84		\$151,662.84
200 <u>Personnel Services – Employee Benefits</u>				
210 Group Insurance – Contracted Provider	21,197.15	9,994.78		31,191.93
220 Social Security Contributions	5,341.57	5,935.33		11,276.90
230 PSERS Retirement Contributions	24,728.88	26,693.72		51,422.60
Total Personnel Services – Employee Benefits	\$51,267.60	\$42,623.83		\$93,891.43
Total 1243 Gifted Support	\$123,999.60	\$121,554.67		\$245,554.27

LEA : 114065503 Muhlenberg SD

Printed 11/26/2024 3:35:39 PM

General Fund (10)

1270 Multi-Handicapped Support

	<u>Elementary</u>	<u>Secondary</u>	<u>Federal</u>	<u>Total</u>
300 <u>Purchased Professional and Technical Services</u>				
322 Professional Educational Services – lus	15,225.37	81,437.98		96,663.35
Total Purchased Professional and Technical Services	\$15,225.37	\$81,437.98		\$96,663.35
Total 1270 Multi-Handicapped Support	\$15,225.37	\$81,437.98		\$96,663.35

LEA : 114065503 Muhlenberg SD

Printed 11/26/2024 3:35:39 PM

General Fund (10)

1280 Early Intervention Support

<u>Elementary</u>	<u>Secondary</u>	<u>Federal</u>	<u>Total</u>
-------------------	------------------	----------------	--------------

300 Purchased Professional and Technical Services

322 Professional Educational Services – lus		15,779.50	15,779.50
---	--	-----------	-----------

Total Purchased Professional and Technical Services		\$15,779.50	\$15,779.50
Total 1280 Early Intervention Support		\$15,779.50	\$15,779.50

LEA : 114065503 Muhlenberg SD

Printed 11/26/2024 3:35:39 PM

General Fund (10)

1290 Special Programs - Other Support	<u>Elementary</u>	<u>Secondary</u>	<u>Federal</u>	<u>Total</u>
100 <u>Personnel Services – Salaries</u>				
100 Personnel Services – Salaries	155,030.20	168,534.17	49,873.40	373,437.77
Total Personnel Services – Salaries	\$155,030.20	\$168,534.17	\$49,873.40	\$373,437.77
200 <u>Personnel Services – Employee Benefits</u>				
210 Group Insurance – Contracted Provider	59,931.67	48,192.90	9,050.40	117,174.97
220 Social Security Contributions	12,397.79	13,691.44	1,222.09	27,311.32
230 PSERS Retirement Contributions	59,779.85	64,258.09	2,760.71	126,798.65
250 Unemployment Compensation	2,689.16	2,689.17		5,378.33
260 Workers' Compensation	25,974.29	25,974.29		51,948.58
Total Personnel Services – Employee Benefits	\$160,772.76	\$154,805.89	\$13,033.20	\$328,611.85
300 <u>Purchased Professional and Technical Services</u>				
329 Professional Educational Services – Other	40,978.42	44,123.76		85,102.18
330 Other Professional Services	110.00			110.00
Total Purchased Professional and Technical Services	\$41,088.42	\$44,123.76		\$85,212.18
500 <u>Other Purchased Services</u>				
567 Tuition To Approved Private Schools (APS) and PA Chartered Schools for the Deaf and Blind		75,954.97		75,954.97
Total Other Purchased Services		\$75,954.97		\$75,954.97
Total 1290 Special Programs - Other Support	\$356,891.38	\$443,418.79	\$62,906.60	\$863,216.77

LEA : 114065503 Muhlenberg SD

Printed 11/26/2024 3:35:39 PM

General Fund (10)

1300 Vocational Education

	<u>Elementary</u>	<u>Secondary</u>	<u>Federal</u>	<u>Total</u>
500 <u>Other Purchased Services</u>				
564 Tuition To Career and Technology Centers		2,572,417.69		2,572,417.69
Total Other Purchased Services		\$2,572,417.69		\$2,572,417.69
Total 1300 Vocational Education		\$2,572,417.69		\$2,572,417.69

LEA : 114065503 Muhlenberg SD

Printed 11/26/2024 3:35:39 PM

General Fund (10)

1400 Other Instructional Programs – Elementary / Secondary	Elementary	Secondary	Federal	Total
100 <u>Personnel Services – Salaries</u>				
100 Personnel Services – Salaries		192,519.33	623,665.43	816,184.76
Total Personnel Services – Salaries		\$192,519.33	\$623,665.43	\$816,184.76
200 <u>Personnel Services – Employee Benefits</u>				
210 Group Insurance – Contracted Provider		20,803.31	28,663.67	49,466.98
220 Social Security Contributions	13,301.79	27,266.15	20,315.55	60,883.49
230 PSERS Retirement Contributions	44,979.61	106,369.16	73,590.14	224,938.91
250 Unemployment Compensation		109.76	109.76	219.52
260 Workers' Compensation		1,060.18	1,060.18	2,120.36
Total Personnel Services – Employee Benefits	\$58,281.40	\$155,608.56	\$123,739.30	\$337,629.26
300 <u>Purchased Professional and Technical Services</u>				
323 Professional Educational Services – Other Educational Agencies		3,600.00		3,600.00
Total Purchased Professional and Technical Services		\$3,600.00		\$3,600.00
400 <u>Purchased Property Services</u>				
430 Repairs and Maintenance Services		1,335.23	3,095.90	4,431.13
Total Purchased Property Services		\$1,335.23	\$3,095.90	\$4,431.13
500 <u>Other Purchased Services</u>				
510 Student Transportation Services			74,294.08	74,294.08
561 Tuition To Other School Districts Within the State		2,005.85		2,005.85
580 Travel			3,842.33	3,842.33
591 Services Purchased Locally			22,905.00	22,905.00
Total Other Purchased Services		\$2,005.85	\$101,041.41	\$103,047.26
600 <u>Supplies</u>				
610 General Supplies			15,458.86	15,458.86
630 Food			548.03	548.03
Total Supplies			\$16,006.89	\$16,006.89
800 <u>Other Objects</u>				
810 Dues and Fees		816.00		816.00
Total Other Objects		\$816.00		\$816.00
Total 1400 Other Instructional Programs – Elementary / Secondary	\$58,281.40	\$355,884.97	\$867,548.93	\$1,281,715.30

LEA : 114065503 Muhlenberg SD

Printed 11/26/2024 3:35:39 PM

General Fund (10)

1410 Drivers' Education

	<u>Elementary</u>	<u>Secondary</u>	<u>Federal</u>	<u>Total</u>
100 <u>Personnel Services – Salaries</u>				
100 Personnel Services – Salaries		88,418.64		88,418.64
Total Personnel Services – Salaries		\$88,418.64		\$88,418.64
200 <u>Personnel Services – Employee Benefits</u>				
210 Group Insurance – Contracted Provider		9,994.78		9,994.78
220 Social Security Contributions		6,657.21		6,657.21
230 PSERS Retirement Contributions		29,043.41		29,043.41
250 Unemployment Compensation		54.88		54.88
260 Workers' Compensation		530.09		530.09
Total Personnel Services – Employee Benefits		\$46,280.37		\$46,280.37
400 <u>Purchased Property Services</u>				
430 Repairs and Maintenance Services		1,335.23		1,335.23
Total Purchased Property Services		\$1,335.23		\$1,335.23
Total 1410 Drivers' Education		\$136,034.24		\$136,034.24

LEA : 114065503 Muhlenberg SD

Printed 11/26/2024 3:35:39 PM

General Fund (10)				
1420 Summer School	<u>Elementary</u>	<u>Secondary</u>	<u>Federal</u>	<u>Total</u>
100 <u>Personnel Services – Salaries</u>				
100 Personnel Services – Salaries			457,375.00	457,375.00
Total Personnel Services – Salaries			\$457,375.00	\$457,375.00
200 <u>Personnel Services – Employee Benefits</u>				
220 Social Security Contributions	13,301.79	12,768.98	7,904.04	33,974.81
230 PSERS Retirement Contributions	44,979.61	42,611.52	17,867.46	105,458.59
Total Personnel Services – Employee Benefits	\$58,281.40	\$55,380.50	\$25,771.50	\$139,433.40
500 <u>Other Purchased Services</u>				
510 Student Transportation Services			67,406.50	67,406.50
Total Other Purchased Services			\$67,406.50	\$67,406.50
600 <u>Supplies</u>				
610 General Supplies			4,659.56	4,659.56
630 Food			548.03	548.03
Total Supplies			\$5,207.59	\$5,207.59
Total 1420 Summer School	\$58,281.40	\$55,380.50	\$555,760.59	\$669,422.49

LEA : 114065503 Muhlenberg SD

Printed 11/26/2024 3:35:39 PM

General Fund (10)

1430 Homebound Instruction

	<u>Elementary</u>	<u>Secondary</u>	<u>Federal</u>	<u>Total</u>
300 <u>Purchased Professional and Technical Services</u>				
323 Professional Educational Services – Other Educational Agencies		3,600.00		3,600.00
Total Purchased Professional and Technical Services		\$3,600.00		\$3,600.00
Total 1430 Homebound Instruction		\$3,600.00		\$3,600.00

LEA : 114065503 Muhlenberg SD

Printed 11/26/2024 3:35:39 PM

General Fund (10)

1440 Alternative Regular Education Programs	<u>Elementary</u>	<u>Secondary</u>	<u>Federal</u>	<u>Total</u>
100 <u>Personnel Services – Salaries</u>				
100 Personnel Services – Salaries		104,100.69		104,100.69
Total Personnel Services – Salaries		\$104,100.69		\$104,100.69
200 <u>Personnel Services – Employee Benefits</u>				
210 Group Insurance – Contracted Provider		10,808.53		10,808.53
220 Social Security Contributions		7,839.96		7,839.96
230 PSERS Retirement Contributions		34,714.23		34,714.23
250 Unemployment Compensation		54.88		54.88
260 Workers' Compensation		530.09		530.09
Total Personnel Services – Employee Benefits		\$53,947.69		\$53,947.69
500 <u>Other Purchased Services</u>				
561 Tuition To Other School Districts Within the State		2,005.85		2,005.85
Total Other Purchased Services		\$2,005.85		\$2,005.85
800 <u>Other Objects</u>				
810 Dues and Fees		816.00		816.00
Total Other Objects		\$816.00		\$816.00
Total 1440 Alternative Regular Education Programs		\$160,870.23		\$160,870.23

LEA : 114065503 Muhlenberg SD

Printed 11/26/2024 3:35:39 PM

General Fund (10)

1441 Adjudicated / Court-Placed Programs	<u>Elementary</u>	<u>Secondary</u>	<u>Federal</u>	<u>Total</u>
500 <u>Other Purchased Services</u>				
561 Tuition To Other School Districts Within the State		2,005.85		2,005.85
Total Other Purchased Services		\$2,005.85		\$2,005.85
Total 1441 Adjudicated / Court-Placed Programs		\$2,005.85		\$2,005.85

LEA : 114065503 Muhlenberg SD

Printed 11/26/2024 3:35:39 PM

General Fund (10)

1442 Alternative Education Programs	<u>Elementary</u>	<u>Secondary</u>	<u>Federal</u>	<u>Total</u>
100 <u>Personnel Services – Salaries</u>				
100 Personnel Services – Salaries		104,100.69		104,100.69
Total Personnel Services – Salaries		\$104,100.69		\$104,100.69
200 <u>Personnel Services – Employee Benefits</u>				
210 Group Insurance – Contracted Provider		10,808.53		10,808.53
220 Social Security Contributions		7,839.96		7,839.96
230 PSERS Retirement Contributions		34,714.23		34,714.23
250 Unemployment Compensation		54.88		54.88
260 Workers' Compensation		530.09		530.09
Total Personnel Services – Employee Benefits		\$53,947.69		\$53,947.69
800 <u>Other Objects</u>				
810 Dues and Fees		816.00		816.00
Total Other Objects		\$816.00		\$816.00
Total 1442 Alternative Education Programs		\$158,864.38		\$158,864.38

LEA : 114065503 Muhlenberg SD

Printed 11/26/2024 3:35:39 PM

General Fund (10)

1450 Instructional Programs Outside the Established School Day	<u>Elementary</u>	<u>Secondary</u>	<u>Federal</u>	<u>Total</u>
500 <u>Other Purchased Services</u>				
591 Services Purchased Locally			22,905.00	22,905.00
Total Other Purchased Services			\$22,905.00	\$22,905.00
600 <u>Supplies</u>				
610 General Supplies			5,540.48	5,540.48
Total Supplies			\$5,540.48	\$5,540.48
Total 1450 Instructional Programs Outside the Established School Day			\$28,445.48	\$28,445.48

LEA : 114065503 Muhlenberg SD

Printed 11/26/2024 3:35:39 PM

General Fund (10)				
1490 Additional Other Instructional Programs	<u>Elementary</u>	<u>Secondary</u>	<u>Federal</u>	<u>Total</u>
100 <u>Personnel Services – Salaries</u>				
100 Personnel Services – Salaries			166,290.43	166,290.43
Total Personnel Services – Salaries			\$166,290.43	\$166,290.43
200 <u>Personnel Services – Employee Benefits</u>				
210 Group Insurance – Contracted Provider			28,663.67	28,663.67
220 Social Security Contributions			12,411.51	12,411.51
230 PSERS Retirement Contributions			55,722.68	55,722.68
250 Unemployment Compensation			109.76	109.76
260 Workers' Compensation			1,060.18	1,060.18
Total Personnel Services – Employee Benefits			\$97,967.80	\$97,967.80
400 <u>Purchased Property Services</u>				
430 Repairs and Maintenance Services			3,095.90	3,095.90
Total Purchased Property Services			\$3,095.90	\$3,095.90
500 <u>Other Purchased Services</u>				
510 Student Transportation Services			6,887.58	6,887.58
580 Travel			3,842.33	3,842.33
Total Other Purchased Services			\$10,729.91	\$10,729.91
600 <u>Supplies</u>				
610 General Supplies			5,258.82	5,258.82
Total Supplies			\$5,258.82	\$5,258.82
Total 1490 Additional Other Instructional Programs			\$283,342.86	\$283,342.86

LEA : 114065503 Muhlenberg SD

Printed 11/26/2024 3:35:39 PM

General Fund (10)

1500 Nonpublic School Programs

Elementary Secondary Federal Total

300 Purchased Professional and Technical Services

322 Professional Educational Services – Ius 26,776.95 26,776.95

Total Purchased Professional and Technical Services \$26,776.95 \$26,776.95

600 Supplies

650 Supplies & Fees – Technology Related 3,520.00 3,520.00

Total Supplies \$3,520.00 \$3,520.00

Total 1500 Nonpublic School Programs \$30,296.95 \$30,296.95

LEA : 114065503 Muhlenberg SD

Printed 11/26/2024 3:35:49 PM

General Fund (10)

2000 Support Services

Total

100	<u>Personnel Services – Salaries</u>	
100	Personnel Services – Salaries	10,075,773.22
Total Personnel Services – Salaries		\$10,075,773.22
200	<u>Personnel Services – Employee Benefits</u>	
210	Group Insurance – Contracted Provider	2,670,989.05
220	Social Security Contributions	743,690.40
230	PSERS Retirement Contributions	3,334,527.91
240	Tuition Reimbursement	149,112.00
250	Unemployment Compensation	7,408.90
260	Workers' Compensation	71,561.85
291	Other Retirement Plans	101,816.26
299	All Other Employee Benefits	13,557.89
Total Personnel Services – Employee Benefits		\$7,092,664.26
300	<u>Purchased Professional and Technical Services</u>	
310	Official / Administrative Services	2,100.00
322	Professional Educational Services – Ius	9,523.55
330	Other Professional Services	973,275.58
340	Technical Services	(32,493.44)
350	Security / Safety Services	366,762.32
360	Employee Training and Development Services	58,225.05
390	Other Purchased Professional and Technical Services	21,702.57
Total Purchased Professional and Technical Services		\$1,399,095.63
400	<u>Purchased Property Services</u>	
410	Cleaning Services	83,910.14
420	Utility Services	98,874.80
430	Repairs and Maintenance Services	457,276.84
440	Rentals	25,515.62
460	Extermination Services	8,394.36
490	Other Purchased Property Services	5,903.10
Total Purchased Property Services		\$679,874.86
500	<u>Other Purchased Services</u>	
511	Student Transportation Services from Another LEA Within the State	1,804,994.42
516	Student Transportation Services From the IU	496,060.69
520	Insurance – General	34,205.25
522	Automotive Liability Insurance	7,452.00
523	General Property and Liability Insurance	176,578.00
529	Other Insurance	10,900.00
530	Communications	134,219.75
549	Other Advertising/Public Relations	7,813.73
550	Printing and Binding	37,614.15
580	Travel	19,884.47
591	Services Purchased Locally	8,055.00
595	IU Payments By Withholding	42,058.21
Total Other Purchased Services		\$2,779,835.67

LEA : 114065503 Muhlenberg SD

Printed 11/26/2024 3:35:49 PM

General Fund (10)

2000 Support Services

Total

600	<u>Supplies</u>	
610	General Supplies	557,401.39
620	Energy	689,022.06
630	Food	13,709.29
640	Books and Periodicals	6,323.48
650	Supplies & Fees – Technology Related	303,240.04
Total Supplies		\$1,569,696.26
700	<u>Property</u>	
739	Leases - Other	149,193.01
Total Property		\$149,193.01
800	<u>Other Objects</u>	
810	Dues and Fees	52,333.69
890	Miscellaneous Expenditures	13,772.41
Total Other Objects		\$66,106.10
Total 2000 Support Services		\$23,812,239.01

LEA : 114065503 Muhlenberg SD

Printed 11/26/2024 3:35:49 PM

General Fund (10)

2100 Support Services – Students	Elementary	Secondary	Federal	Total
100 Personnel Services – Salaries				
100 Personnel Services – Salaries	718,533.31	1,281,565.31	12,730.86	2,332,202.59
Total Personnel Services – Salaries	\$718,533.31	\$1,281,565.31	\$12,730.86	\$2,332,202.59
200 Personnel Services – Employee Benefits				
210 Group Insurance – Contracted Provider	170,680.11	348,475.78		565,189.91
220 Social Security Contributions	52,450.46	94,702.57		172,098.33
230 PSERS Retirement Contributions	242,230.42	431,094.27		782,552.67
250 Unemployment Compensation	686.00	740.89		1,646.41
260 Workers' Compensation	6,626.09	7,156.19		15,902.63
291 Other Retirement Plans	2,500.00	2,500.00		7,800.00
Total Personnel Services – Employee Benefits	\$475,173.08	\$884,669.70		\$1,545,189.95
300 Purchased Professional and Technical Services				
330 Other Professional Services	137,268.12	136,453.13	52,503.00	326,224.25
340 Technical Services	(17,552.50)	(17,400.95)		(34,953.45)
390 Other Purchased Professional and Technical Services	3,493.50	3,493.50		6,987.00
Total Purchased Professional and Technical Services	\$123,209.12	\$122,545.68	\$52,503.00	\$298,257.80
600 Supplies				
610 General Supplies	1,960.08	528.85	3,560.00	7,224.89
630 Food		195.94		195.94
640 Books and Periodicals	511.58	149.50		661.08
650 Supplies & Fees – Technology Related	47,668.34	54,785.64	7,338.24	109,792.22
Total Supplies	\$50,140.00	\$55,659.93	\$10,898.24	\$117,874.13
800 Other Objects				
810 Dues and Fees	395.00	90.00		485.00
Total Other Objects	\$395.00	\$90.00		\$485.00
Total 2100 Support Services – Students	\$1,367,450.51	\$2,344,530.62	\$76,132.10	\$4,294,009.47

LEA : 114065503 Muhlenberg SD

Printed 11/26/2024 3:35:49 PM

General Fund (10)

2110 Supervision of Student Services	<u>Elementary</u>	<u>Secondary</u>	<u>Federal</u>	<u>Total</u>
100 <u>Personnel Services – Salaries</u>				
100 Personnel Services – Salaries	207,246.20	265,236.41		472,482.61
Total Personnel Services – Salaries	\$207,246.20	\$265,236.41		\$472,482.61
200 <u>Personnel Services – Employee Benefits</u>				
210 Group Insurance – Contracted Provider	30,378.34	63,924.59		94,302.93
220 Social Security Contributions	15,675.22	19,740.55		35,415.77
230 PSERS Retirement Contributions	68,632.49	89,482.30		158,114.79
250 Unemployment Compensation	137.20	137.20		274.40
260 Workers' Compensation	1,325.22	1,325.22		2,650.44
291 Other Retirement Plans	2,500.00	2,500.00		5,000.00
Total Personnel Services – Employee Benefits	\$118,648.47	\$177,109.86		\$295,758.33
600 <u>Supplies</u>				
610 General Supplies	122.35	122.35		244.70
Total Supplies	\$122.35	\$122.35		\$244.70
800 <u>Other Objects</u>				
810 Dues and Fees	90.00	90.00		180.00
Total Other Objects	\$90.00	\$90.00		\$180.00
Total 2110 Supervision of Student Services	\$326,107.02	\$442,558.62		\$768,665.64

LEA : 114065503 Muhlenberg SD

Printed 11/26/2024 3:35:49 PM

General Fund (10)

2111 Supervision of Student Services – Head of Component	<u>Elementary</u>	<u>Secondary</u>	<u>Federal</u>	<u>Total</u>
100 <u>Personnel Services – Salaries</u>				
100 Personnel Services – Salaries	103,247.70	103,247.70		206,495.40
Total Personnel Services – Salaries	\$103,247.70	\$103,247.70		\$206,495.40
200 <u>Personnel Services – Employee Benefits</u>				
210 Group Insurance – Contracted Provider	30,325.78	30,325.81		60,651.59
220 Social Security Contributions	7,719.19	7,719.19		15,438.38
230 PSERS Retirement Contributions	34,496.94	34,496.94		68,993.88
250 Unemployment Compensation	137.20	137.20		274.40
260 Workers' Compensation	1,325.22	1,325.22		2,650.44
291 Other Retirement Plans	2,500.00	2,500.00		5,000.00
Total Personnel Services – Employee Benefits	\$76,504.33	\$76,504.36		\$153,008.69
600 <u>Supplies</u>				
610 General Supplies	122.35	122.35		244.70
Total Supplies	\$122.35	\$122.35		\$244.70
800 <u>Other Objects</u>				
810 Dues and Fees	90.00	90.00		180.00
Total Other Objects	\$90.00	\$90.00		\$180.00
Total 2111 Supervision of Student Services – Head of Component	\$179,964.38	\$179,964.41		\$359,928.79

LEA : 114065503 Muhlenberg SD

Printed 11/26/2024 3:35:49 PM

General Fund (10)

2119 Supervision of Student Services – All Other Supervision	<u>Elementary</u>	<u>Secondary</u>	<u>Federal</u>	<u>Total</u>
100 <u>Personnel Services – Salaries</u>				
100 Personnel Services – Salaries	103,998.50	161,988.71		265,987.21
Total Personnel Services – Salaries	\$103,998.50	\$161,988.71		\$265,987.21
200 <u>Personnel Services – Employee Benefits</u>				
210 Group Insurance – Contracted Provider	52.56	33,598.78		33,651.34
220 Social Security Contributions	7,956.03	12,021.36		19,977.39
230 PSERS Retirement Contributions	34,135.55	54,985.36		89,120.91
Total Personnel Services – Employee Benefits	\$42,144.14	\$100,605.50		\$142,749.64
Total 2119 Supervision of Student Services – All Other Supervision	\$146,142.64	\$262,594.21		\$408,736.85

LEA : 114065503 Muhlenberg SD

Printed 11/26/2024 3:35:49 PM

General Fund (10)

2120 Guidance Services	Elementary	Secondary	Federal	Total
100 Personnel Services – Salaries				
100 Personnel Services – Salaries	401,365.94	831,014.69		1,232,380.63
Total Personnel Services – Salaries	\$401,365.94	\$831,014.69		\$1,232,380.63
200 Personnel Services – Employee Benefits				
210 Group Insurance – Contracted Provider	108,044.20	231,096.43		339,140.63
220 Social Security Contributions	29,057.48	61,344.06		90,401.54
230 PSERS Retirement Contributions	136,264.88	278,605.23		414,870.11
250 Unemployment Compensation	439.04	493.93		932.97
260 Workers' Compensation	4,240.70	4,770.79		9,011.49
Total Personnel Services – Employee Benefits	\$278,046.30	\$576,310.44		\$854,356.74
300 Purchased Professional and Technical Services				
340 Technical Services	(17,552.50)	(17,552.50)		(35,105.00)
390 Other Purchased Professional and Technical Services	3,493.50	3,493.50		6,987.00
Total Purchased Professional and Technical Services	(\$14,059.00)	(\$14,059.00)		(\$28,118.00)
600 Supplies				
610 General Supplies	1,776.13	344.90		2,121.03
630 Food		195.94		195.94
640 Books and Periodicals	362.08			362.08
650 Supplies & Fees – Technology Related	47,161.40	54,278.70		101,440.10
Total Supplies	\$49,299.61	\$54,819.54		\$104,119.15
Total 2120 Guidance Services	\$714,652.85	\$1,448,085.67		\$2,162,738.52

LEA : 114065503 Muhlenberg SD

Printed 11/26/2024 3:35:49 PM

General Fund (10)

2140 Psychological Services	Elementary	Secondary	Federal	Total
100 <u>Personnel Services – Salaries</u>				
100 Personnel Services – Salaries	109,921.17	185,314.21		295,235.38
Total Personnel Services – Salaries	\$109,921.17	\$185,314.21		\$295,235.38
200 <u>Personnel Services – Employee Benefits</u>				
210 Group Insurance – Contracted Provider	32,257.57	53,454.76		85,712.33
220 Social Security Contributions	7,717.76	13,617.96		21,335.72
230 PSERS Retirement Contributions	37,333.05	63,006.74		100,339.79
250 Unemployment Compensation	109.76	109.76		219.52
260 Workers' Compensation	1,060.17	1,060.18		2,120.35
Total Personnel Services – Employee Benefits	\$78,478.31	\$131,249.40		\$209,727.71
300 <u>Purchased Professional and Technical Services</u>				
330 Other Professional Services	38,590.00	37,775.00	52,503.00	128,868.00
Total Purchased Professional and Technical Services	\$38,590.00	\$37,775.00	\$52,503.00	\$128,868.00
600 <u>Supplies</u>				
610 General Supplies	61.60	61.60		123.20
640 Books and Periodicals	149.50	149.50		299.00
650 Supplies & Fees – Technology Related	506.94	506.94	7,338.24	8,352.12
Total Supplies	\$718.04	\$718.04	\$7,338.24	\$8,774.32
800 <u>Other Objects</u>				
810 Dues and Fees	305.00			305.00
Total Other Objects	\$305.00			\$305.00
Total 2140 Psychological Services	\$228,012.52	\$355,056.65	\$59,841.24	\$642,910.41

LEA : 114065503 Muhlenberg SD

Printed 11/26/2024 3:35:49 PM

General Fund (10)

2160 Social Work Services

	<u>Elementary</u>	<u>Secondary</u>	<u>Federal</u>	<u>Total</u>
100 <u>Personnel Services – Salaries</u>				
100 Personnel Services – Salaries			12,730.86	332,103.97
Total Personnel Services – Salaries			\$12,730.86	\$332,103.97
200 <u>Personnel Services – Employee Benefits</u>				
210 Group Insurance – Contracted Provider				46,034.02
220 Social Security Contributions				24,945.30
230 PSERS Retirement Contributions				109,227.98
250 Unemployment Compensation				219.52
260 Workers' Compensation				2,120.35
291 Other Retirement Plans				2,800.00
Total Personnel Services – Employee Benefits				\$185,347.17
600 <u>Supplies</u>				
610 General Supplies			3,560.00	4,735.96
Total Supplies			\$3,560.00	\$4,735.96
Total 2160 Social Work Services			\$16,290.86	\$522,187.10

LEA : 114065503 Muhlenberg SD

Printed 11/26/2024 3:35:49 PM

General Fund (10)

2190 Other Student Services	<u>Elementary</u>	<u>Secondary</u>	<u>Federal</u>	<u>Total</u>
300 <u>Purchased Professional and Technical Services</u>				
330 Other Professional Services	98,678.12	98,678.13		197,356.25
340 Technical Services		151.55		151.55
Total Purchased Professional and Technical Services	\$98,678.12	\$98,829.68		\$197,507.80
Total 2190 Other Student Services	\$98,678.12	\$98,829.68		\$197,507.80

LEA : 114065503 Muhlenberg SD

Printed 11/26/2024 3:35:49 PM

General Fund (10)

2200 Support Services – Instructional Staff

	Elementary	Secondary	Federal	Total
100 <u>Personnel Services – Salaries</u>				
100 Personnel Services – Salaries	671,333.74	465,454.01	233,518.49	1,370,306.24
Total Personnel Services – Salaries	\$671,333.74	\$465,454.01	\$233,518.49	\$1,370,306.24
200 <u>Personnel Services – Employee Benefits</u>				
210 Group Insurance – Contracted Provider	167,956.38	91,202.74	24,533.91	283,693.03
220 Social Security Contributions	60,980.16	40,395.70	410.49	101,786.35
230 PSERS Retirement Contributions	271,252.86	175,071.12	1,855.55	448,179.53
240 Tuition Reimbursement	60,295.00	53,454.00		113,749.00
250 Unemployment Compensation	384.16	384.18		768.34
260 Workers' Compensation	3,710.60	3,710.63		7,421.23
291 Other Retirement Plans	7,638.58	7,288.35	350.00	15,276.93
Total Personnel Services – Employee Benefits	\$572,217.74	\$371,506.72	\$27,149.95	\$970,874.41
300 <u>Purchased Professional and Technical Services</u>				
322 Professional Educational Services – lus			9,523.55	9,523.55
360 Employee Training and Development Services	4,994.00	9,365.00	30,272.50	44,631.50
Total Purchased Professional and Technical Services	\$4,994.00	\$9,365.00	\$39,796.05	\$54,155.05
400 <u>Purchased Property Services</u>				
430 Repairs and Maintenance Services	758.52	758.52		1,517.04
Total Purchased Property Services	\$758.52	\$758.52		\$1,517.04
500 <u>Other Purchased Services</u>				
530 Communications	1,448.60	1,448.60		2,897.20
580 Travel	2,890.91	1,227.77	2,645.58	6,764.26
Total Other Purchased Services	\$4,339.51	\$2,676.37	\$2,645.58	\$9,661.46
600 <u>Supplies</u>				
610 General Supplies	891.97	393.90	2,095.62	3,381.49
630 Food		25.00	270.00	295.00
640 Books and Periodicals	6,166.70	(735.30)	231.00	5,662.40
650 Supplies & Fees – Technology Related	3,009.25	6,552.04	147.00	9,708.29
Total Supplies	\$10,067.92	\$6,235.64	\$2,743.62	\$19,047.18
Total 2200 Support Services – Instructional Staff	\$1,263,711.43	\$855,996.26	\$305,853.69	\$2,425,561.38

LEA : 114065503 Muhlenberg SD

Printed 11/26/2024 3:35:49 PM

General Fund (10)

2250 School Library Services	Elementary	Secondary	Federal	Total
100 <u>Personnel Services – Salaries</u>				
100 Personnel Services – Salaries	100,044.57	13,619.65		113,664.22
Total Personnel Services – Salaries	\$100,044.57	\$13,619.65		\$113,664.22
200 <u>Personnel Services – Employee Benefits</u>				
210 Group Insurance – Contracted Provider	28,611.11			28,611.11
220 Social Security Contributions	7,343.74	1,041.92		8,385.66
230 PSERS Retirement Contributions	33,969.79	4,596.70		38,566.49
250 Unemployment Compensation	27.44	27.44		54.88
260 Workers' Compensation	265.04	265.05		530.09
Total Personnel Services – Employee Benefits	\$70,217.12	\$5,931.11		\$76,148.23
600 <u>Supplies</u>				
610 General Supplies	590.00	91.92		681.92
640 Books and Periodicals	6,166.70	(735.30)		5,431.40
650 Supplies & Fees – Technology Related	1,660.63	5,203.42		6,864.05
Total Supplies	\$8,417.33	\$4,560.04		\$12,977.37
Total 2250 School Library Services	\$178,679.02	\$24,110.80		\$202,789.82

LEA : 114065503 Muhlenberg SD

Printed 11/26/2024 3:35:49 PM

General Fund (10)

2260 Instruction and Curriculum Development Services

	<u>Elementary</u>	<u>Secondary</u>	<u>Federal</u>	<u>Total</u>
100 <u>Personnel Services – Salaries</u>				
100 Personnel Services – Salaries	288,433.64	288,433.11	48,814.49	625,681.24
Total Personnel Services – Salaries	\$288,433.64	\$288,433.11	\$48,814.49	\$625,681.24
200 <u>Personnel Services – Employee Benefits</u>				
210 Group Insurance – Contracted Provider	65,008.15	65,008.16	3,490.20	133,506.51
220 Social Security Contributions	23,383.82	23,383.76	410.49	47,178.07
230 PSERS Retirement Contributions	97,156.04	97,156.04	1,855.55	196,167.63
250 Unemployment Compensation	192.08	192.09		384.17
260 Workers' Compensation	1,855.30	1,855.31		3,710.61
291 Other Retirement Plans	7,638.58	7,288.35	350.00	15,276.93
Total Personnel Services – Employee Benefits	\$195,233.97	\$194,883.71	\$6,106.24	\$396,223.92
400 <u>Purchased Property Services</u>				
430 Repairs and Maintenance Services	758.52	758.52		1,517.04
Total Purchased Property Services	\$758.52	\$758.52		\$1,517.04
500 <u>Other Purchased Services</u>				
530 Communications	1,448.60	1,448.60		2,897.20
580 Travel	1,088.91	1,088.91		2,177.82
Total Other Purchased Services	\$2,537.51	\$2,537.51		\$5,075.02
600 <u>Supplies</u>				
610 General Supplies	301.97	301.98		603.95
Total Supplies	\$301.97	\$301.98		\$603.95
Total 2260 Instruction and Curriculum Development Services	\$487,265.61	\$486,914.83	\$54,920.73	\$1,029,101.17

LEA : 114065503 Muhlenberg SD

Printed 11/26/2024 3:35:49 PM

General Fund (10)

2270 Instructional Staff Professional Development Services	Elementary	Secondary	Federal	Total
100 <u>Personnel Services – Salaries</u>				
100 Personnel Services – Salaries	282,855.53	163,401.25	184,704.00	630,960.78
Total Personnel Services – Salaries	\$282,855.53	\$163,401.25	\$184,704.00	\$630,960.78
200 <u>Personnel Services – Employee Benefits</u>				
210 Group Insurance – Contracted Provider	74,337.12	26,194.58	21,043.71	121,575.41
220 Social Security Contributions	30,252.60	15,970.02		46,222.62
230 PSERS Retirement Contributions	140,127.03	73,318.38		213,445.41
240 Tuition Reimbursement	60,295.00	53,454.00		113,749.00
250 Unemployment Compensation	164.64	164.65		329.29
260 Workers' Compensation	1,590.26	1,590.27		3,180.53
Total Personnel Services – Employee Benefits	\$306,766.65	\$170,691.90	\$21,043.71	\$498,502.26
300 <u>Purchased Professional and Technical Services</u>				
360 Employee Training and Development Services	4,994.00	9,365.00	30,272.50	44,631.50
Total Purchased Professional and Technical Services	\$4,994.00	\$9,365.00	\$30,272.50	\$44,631.50
500 <u>Other Purchased Services</u>				
580 Travel	1,802.00	138.86	2,645.58	4,586.44
Total Other Purchased Services	\$1,802.00	\$138.86	\$2,645.58	\$4,586.44
600 <u>Supplies</u>				
610 General Supplies			2,095.62	2,095.62
630 Food		25.00	270.00	295.00
640 Books and Periodicals			231.00	231.00
650 Supplies & Fees – Technology Related	1,348.62	1,348.62		2,697.24
Total Supplies	\$1,348.62	\$1,373.62	\$2,596.62	\$5,318.86
Total 2270 Instructional Staff Professional Development Services	\$597,766.80	\$344,970.63	\$241,262.41	\$1,183,999.84

LEA : 114065503 Muhlenberg SD

Printed 11/26/2024 3:35:49 PM

General Fund (10)

2280 Nonpublic Support Services

	<u>Elementary</u>	<u>Secondary</u>	<u>Federal</u>	<u>Total</u>
300 <u>Purchased Professional and Technical Services</u>				
322 Professional Educational Services – Ius			9,523.55	9,523.55
Total Purchased Professional and Technical Services			\$9,523.55	\$9,523.55
600 <u>Supplies</u>				
650 Supplies & Fees – Technology Related			147.00	147.00
Total Supplies			\$147.00	\$147.00
Total 2280 Nonpublic Support Services			\$9,670.55	\$9,670.55

LEA : 114065503 Muhlenberg SD

Printed 11/26/2024 3:35:49 PM

General Fund (10)

2300 Support Services – Administration	Elementary	Secondary	Federal	Total
100 Personnel Services – Salaries				
100 Personnel Services – Salaries	933,054.14	995,925.35		2,594,991.39
Total Personnel Services – Salaries	\$933,054.14	\$995,925.35		\$2,594,991.39
200 Personnel Services – Employee Benefits				
210 Group Insurance – Contracted Provider	245,192.90	304,906.74		701,224.64
220 Social Security Contributions	69,632.21	74,566.75		189,066.73
230 PSERS Retirement Contributions	314,633.34	334,390.36		843,571.13
250 Unemployment Compensation	768.33	768.33		1,756.18
260 Workers' Compensation	7,421.22	7,421.23		16,962.80
291 Other Retirement Plans	17,333.33	10,605.00		39,888.33
299 All Other Employee Benefits				13,557.89
Total Personnel Services – Employee Benefits	\$654,981.33	\$732,658.41		\$1,806,027.70
300 Purchased Professional and Technical Services				
310 Official / Administrative Services				2,100.00
330 Other Professional Services				388,366.36
340 Technical Services				1,396.86
Total Purchased Professional and Technical Services				\$391,863.22
400 Purchased Property Services				
430 Repairs and Maintenance Services	12,766.19	11,275.95		25,302.38
440 Rentals				14,965.62
Total Purchased Property Services	\$12,766.19	\$11,275.95		\$40,268.00
500 Other Purchased Services				
520 Insurance – General				34,205.25
530 Communications	7,852.38	9,679.76		20,601.87
549 Other Advertising/Public Relations				7,813.73
550 Printing and Binding	2,790.00	855.00		4,297.50
580 Travel				2,307.96
591 Services Purchased Locally	50.00	525.00		2,545.00
Total Other Purchased Services	\$10,692.38	\$11,059.76		\$71,771.31
600 Supplies				
610 General Supplies	19,882.09	10,687.59		58,757.92
630 Food	2,687.15	1,407.45		13,093.35
650 Supplies & Fees – Technology Related	1,699.00			6,639.00
Total Supplies	\$24,268.24	\$12,095.04		\$78,490.27
700 Property				
739 Leases - Other				149,193.01
Total Property				\$149,193.01
800 Other Objects				
810 Dues and Fees	3,025.00	2,574.16		45,610.41
890 Miscellaneous Expenditures				12,842.00
Total Other Objects	\$3,025.00	\$2,574.16		\$58,452.41
Total 2300 Support Services – Administration	\$1,638,787.28	\$1,765,588.67		\$5,191,057.31

LEA : 114065503 Muhlenberg SD

Printed 11/26/2024 3:35:49 PM

General Fund (10)

2310 Board Services

Elementary Secondary Federal Total

300 Purchased Professional and Technical Services

310 Official / Administrative Services 600.00

330 Other Professional Services 175.00

Total Purchased Professional and Technical Services \$775.00

500 Other Purchased Services

520 Insurance – General 28,102.00

549 Other Advertising/Public Relations 1,210.73

550 Printing and Binding 373.00

Total Other Purchased Services \$29,685.73

600 Supplies

610 General Supplies 110.62

630 Food 269.50

Total Supplies \$380.12

800 Other Objects

810 Dues and Fees 19,012.94

Total Other Objects \$19,012.94

Total 2310 Board Services \$49,853.79

LEA : 114065503 Muhlenberg SD

Printed 11/26/2024 3:35:49 PM

General Fund (10)

2320 Board Treasurer Services	<u>Elementary</u>	<u>Secondary</u>	<u>Federal</u>	<u>Total</u>
300 <u>Purchased Professional and Technical Services</u>				
310 Official / Administrative Services				1,500.00
Total Purchased Professional and Technical Services				\$1,500.00
500 <u>Other Purchased Services</u>				
520 Insurance – General				100.00
Total Other Purchased Services				\$100.00
Total 2320 Board Treasurer Services				\$1,600.00

LEA : 114065503 Muhlenberg SD

Printed 11/26/2024 3:35:49 PM

General Fund (10)

2330 Tax Assessment and Collection Services	<u>Elementary</u>	<u>Secondary</u>	<u>Federal</u>	<u>Total</u>
100 <u>Personnel Services – Salaries</u>				
100 Personnel Services – Salaries				22,031.10
Total Personnel Services – Salaries				\$22,031.10
200 <u>Personnel Services – Employee Benefits</u>				
220 Social Security Contributions				1,685.39
Total Personnel Services – Employee Benefits				\$1,685.39
300 <u>Purchased Professional and Technical Services</u>				
330 Other Professional Services				32,341.36
340 Technical Services				1,396.86
Total Purchased Professional and Technical Services				\$33,738.22
500 <u>Other Purchased Services</u>				
520 Insurance – General				6,003.25
530 Communications				3,069.73
Total Other Purchased Services				\$9,072.98
600 <u>Supplies</u>				
610 General Supplies				7,280.04
650 Supplies & Fees – Technology Related				4,940.00
Total Supplies				\$12,220.04
Total 2330 Tax Assessment and Collection Services				\$78,747.73

LEA : 114065503 Muhlenberg SD

Printed 11/26/2024 3:35:49 PM

General Fund (10)

2350 Legal and Accounting Services	<u>Elementary</u>	<u>Secondary</u>	<u>Federal</u>	<u>Total</u>
300 <u>Purchased Professional and Technical Services</u>				
330 Other Professional Services				343,439.78
Total Purchased Professional and Technical Services				\$343,439.78
Total 2350 Legal and Accounting Services				\$343,439.78

LEA : 114065503 Muhlenberg SD

Printed 11/26/2024 3:35:49 PM

General Fund (10)

2360 Office of the Superintendent / Executive Director Services	<u>Elementary</u>	<u>Secondary</u>	<u>Federal</u>	<u>Total</u>
100 <u>Personnel Services – Salaries</u>				
100 Personnel Services – Salaries				544,024.35
Total Personnel Services – Salaries				\$544,024.35
200 <u>Personnel Services – Employee Benefits</u>				
210 Group Insurance – Contracted Provider				119,847.15
220 Social Security Contributions				35,681.64
230 PSERS Retirement Contributions				178,177.12
250 Unemployment Compensation				219.52
260 Workers' Compensation				2,120.35
291 Other Retirement Plans				11,950.00
Total Personnel Services – Employee Benefits				\$347,995.78
400 <u>Purchased Property Services</u>				
430 Repairs and Maintenance Services				1,260.24
Total Purchased Property Services				\$1,260.24
500 <u>Other Purchased Services</u>				
530 Communications	1,748.95	1,748.97		3,497.92
580 Travel				2,307.96
591 Services Purchased Locally				55.00
Total Other Purchased Services	\$1,748.95	\$1,748.97		\$5,860.88
600 <u>Supplies</u>				
610 General Supplies				2,202.54
630 Food				8,729.25
Total Supplies				\$10,931.79
800 <u>Other Objects</u>				
810 Dues and Fees				15,294.95
890 Miscellaneous Expenditures				4,092.00
Total Other Objects				\$19,386.95
Total 2360 Office of the Superintendent / Executive Director Services	\$1,748.95	\$1,748.97		\$929,459.99

LEA : 114065503 Muhlenberg SD

Printed 11/26/2024 3:35:49 PM

General Fund (10)

2370 Community Relations Services	<u>Elementary</u>	<u>Secondary</u>	<u>Federal</u>	<u>Total</u>
600 <u>Supplies</u>				
610 General Supplies				2,363.00
Total Supplies				\$2,363.00
Total 2370 Community Relations Services				\$2,363.00

LEA : 114065503 Muhlenberg SD

Printed 11/26/2024 3:35:49 PM

General Fund (10)

2380 Office of the Principal Services	Elementary	Secondary	Federal	Total
100 <u>Personnel Services – Salaries</u>				
100 Personnel Services – Salaries	933,054.14	995,925.35		1,928,979.49
Total Personnel Services – Salaries	\$933,054.14	\$995,925.35		\$1,928,979.49
200 <u>Personnel Services – Employee Benefits</u>				
210 Group Insurance – Contracted Provider	245,192.90	304,906.74		550,099.64
220 Social Security Contributions	69,632.21	74,566.75		144,198.96
230 PSERS Retirement Contributions	314,633.34	334,390.36		649,023.70
250 Unemployment Compensation	768.33	768.33		1,536.66
260 Workers' Compensation	7,421.22	7,421.23		14,842.45
291 Other Retirement Plans	17,333.33	10,605.00		27,938.33
Total Personnel Services – Employee Benefits	\$654,981.33	\$732,658.41		\$1,387,639.74
400 <u>Purchased Property Services</u>				
430 Repairs and Maintenance Services	12,766.19	11,275.95		24,042.14
Total Purchased Property Services	\$12,766.19	\$11,275.95		\$24,042.14
500 <u>Other Purchased Services</u>				
530 Communications	6,103.43	7,930.79		14,034.22
550 Printing and Binding	2,790.00	855.00		3,645.00
591 Services Purchased Locally	50.00	525.00		575.00
Total Other Purchased Services	\$8,943.43	\$9,310.79		\$18,254.22
600 <u>Supplies</u>				
610 General Supplies	19,882.09	10,687.59		30,569.68
630 Food	2,687.15	1,407.45		4,094.60
650 Supplies & Fees – Technology Related	1,699.00			1,699.00
Total Supplies	\$24,268.24	\$12,095.04		\$36,363.28
800 <u>Other Objects</u>				
810 Dues and Fees	3,025.00	2,574.16		5,599.16
Total Other Objects	\$3,025.00	\$2,574.16		\$5,599.16
Total 2380 Office of the Principal Services	\$1,637,038.33	\$1,763,839.70		\$3,400,878.03

LEA : 114065503 Muhlenberg SD

Printed 11/26/2024 3:35:49 PM

General Fund (10)				
2390 Other Administration Services	<u>Elementary</u>	<u>Secondary</u>	<u>Federal</u>	<u>Total</u>
100 <u>Personnel Services – Salaries</u>				
100 Personnel Services – Salaries				99,956.45
Total Personnel Services – Salaries				\$99,956.45
200 <u>Personnel Services – Employee Benefits</u>				
210 Group Insurance – Contracted Provider				31,277.85
220 Social Security Contributions				7,500.74
230 PSERS Retirement Contributions				16,370.31
299 All Other Employee Benefits				13,557.89
Total Personnel Services – Employee Benefits				\$68,706.79
300 <u>Purchased Professional and Technical Services</u>				
330 Other Professional Services				12,410.22
Total Purchased Professional and Technical Services				\$12,410.22
400 <u>Purchased Property Services</u>				
440 Rentals				14,965.62
Total Purchased Property Services				\$14,965.62
500 <u>Other Purchased Services</u>				
549 Other Advertising/Public Relations				6,603.00
550 Printing and Binding				279.50
591 Services Purchased Locally				1,915.00
Total Other Purchased Services				\$8,797.50
600 <u>Supplies</u>				
610 General Supplies				16,232.04
Total Supplies				\$16,232.04
700 <u>Property</u>				
739 Leases - Other				149,193.01
Total Property				\$149,193.01
800 <u>Other Objects</u>				
810 Dues and Fees				5,703.36
890 Miscellaneous Expenditures				8,750.00
Total Other Objects				\$14,453.36
Total 2390 Other Administration Services				\$384,714.99

LEA : 114065503 Muhlenberg SD

Printed 11/26/2024 3:35:49 PM

General Fund (10)

2400 Support Services – Pupil Health	<u>Elementary</u>	<u>Secondary</u>	<u>Federal</u>	<u>Total</u>
100 <u>Personnel Services – Salaries</u>				
100 Personnel Services – Salaries			9,170.00	506,520.52
Total Personnel Services – Salaries			\$9,170.00	\$506,520.52
200 <u>Personnel Services – Employee Benefits</u>				
210 Group Insurance – Contracted Provider				103,935.66
220 Social Security Contributions			178.96	37,277.81
230 PSERS Retirement Contributions			800.59	170,723.06
250 Unemployment Compensation				493.93
260 Workers' Compensation				4,770.79
Total Personnel Services – Employee Benefits			\$979.55	\$317,201.25
300 <u>Purchased Professional and Technical Services</u>				
330 Other Professional Services			2,160.00	255,241.67
390 Other Purchased Professional and Technical Services				14,715.57
Total Purchased Professional and Technical Services			\$2,160.00	\$269,957.24
600 <u>Supplies</u>				
610 General Supplies			501.28	15,397.99
Total Supplies			\$501.28	\$15,397.99
Total 2400 Support Services – Pupil Health			\$12,810.83	\$1,109,077.00

LEA : 114065503 Muhlenberg SD

Printed 11/26/2024 3:35:49 PM

General Fund (10)

2420 Medical Services	<u>Elementary</u>	<u>Secondary</u>	<u>Federal</u>	<u>Total</u>
300 <u>Purchased Professional and Technical Services</u>				
330 Other Professional Services			2,160.00	254,801.67
Total Purchased Professional and Technical Services			\$2,160.00	\$254,801.67
600 <u>Supplies</u>				
610 General Supplies			501.28	511.89
Total Supplies			\$501.28	\$511.89
Total 2420 Medical Services			\$2,661.28	\$255,313.56

LEA : 114065503 Muhlenberg SD

Printed 11/26/2024 3:35:49 PM

General Fund (10)

2430 Dental Services

<u>Elementary</u>	<u>Secondary</u>	<u>Federal</u>	<u>Total</u>
-------------------	------------------	----------------	--------------

300 Purchased Professional and Technical Services

330 Other Professional Services			440.00
---------------------------------	--	--	--------

Total Purchased Professional and Technical Services			\$440.00
--	--	--	-----------------

Total 2430 Dental Services			\$440.00
-----------------------------------	--	--	-----------------

LEA : 114065503 Muhlenberg SD

Printed 11/26/2024 3:35:49 PM

General Fund (10)

2440 Nursing Services

	<u>Elementary</u>	<u>Secondary</u>	<u>Federal</u>	<u>Total</u>
100 <u>Personnel Services – Salaries</u>				
100 Personnel Services – Salaries			9,170.00	506,520.52
Total Personnel Services – Salaries			\$9,170.00	\$506,520.52
200 <u>Personnel Services – Employee Benefits</u>				
210 Group Insurance – Contracted Provider				103,935.66
220 Social Security Contributions			178.96	37,277.81
230 PSERS Retirement Contributions			800.59	170,723.06
250 Unemployment Compensation				493.93
260 Workers' Compensation				4,770.79
Total Personnel Services – Employee Benefits			\$979.55	\$317,201.25
300 <u>Purchased Professional and Technical Services</u>				
390 Other Purchased Professional and Technical Services				14,715.57
Total Purchased Professional and Technical Services				\$14,715.57
600 <u>Supplies</u>				
610 General Supplies				14,436.08
Total Supplies				\$14,436.08
Total 2440 Nursing Services			\$10,149.55	\$852,873.42

LEA : 114065503 Muhlenberg SD

Printed 11/26/2024 3:35:49 PM

General Fund (10)

2450 Nonpublic Health Services	<u>Elementary</u>	<u>Secondary</u>	<u>Federal</u>	<u>Total</u>
600 <u>Supplies</u>				
610 General Supplies				450.02
Total Supplies				\$450.02
Total 2450 Nonpublic Health Services				\$450.02

LEA : 114065503 Muhlenberg SD

Printed 11/26/2024 3:35:49 PM

General Fund (10)

2500 Support Services – Business	<u>Elementary</u>	<u>Secondary</u>	<u>Federal</u>	<u>Total</u>
100 <u>Personnel Services – Salaries</u>				
100 Personnel Services – Salaries				423,043.02
Total Personnel Services – Salaries				\$423,043.02
200 <u>Personnel Services – Employee Benefits</u>				
210 Group Insurance – Contracted Provider				120,696.31
220 Social Security Contributions				31,519.03
230 PSERS Retirement Contributions				141,792.90
250 Unemployment Compensation				274.40
260 Workers' Compensation				2,650.45
291 Other Retirement Plans				17,500.00
Total Personnel Services – Employee Benefits				\$314,433.09
400 <u>Purchased Property Services</u>				
430 Repairs and Maintenance Services				5,809.46
Total Purchased Property Services				\$5,809.46
500 <u>Other Purchased Services</u>				
530 Communications				2,812.24
591 Services Purchased Locally				150.00
Total Other Purchased Services				\$2,962.24
600 <u>Supplies</u>				
610 General Supplies				989.28
650 Supplies & Fees – Technology Related				49,269.97
Total Supplies				\$50,259.25
800 <u>Other Objects</u>				
810 Dues and Fees				1,914.11
890 Miscellaneous Expenditures				930.41
Total Other Objects				\$2,844.52
Total 2500 Support Services – Business				\$799,351.58

LEA : 114065503 Muhlenberg SD

Printed 11/26/2024 3:35:49 PM

General Fund (10)				
2510 Fiscal Services				
	<u>Elementary</u>	<u>Secondary</u>	<u>Federal</u>	<u>Total</u>
100 <u>Personnel Services – Salaries</u>				
100 Personnel Services – Salaries				423,043.02
Total Personnel Services – Salaries				\$423,043.02
200 <u>Personnel Services – Employee Benefits</u>				
210 Group Insurance – Contracted Provider				120,696.31
220 Social Security Contributions				31,519.03
230 PSERS Retirement Contributions				141,792.90
250 Unemployment Compensation				274.40
260 Workers' Compensation				2,650.45
291 Other Retirement Plans				17,500.00
Total Personnel Services – Employee Benefits				\$314,433.09
400 <u>Purchased Property Services</u>				
430 Repairs and Maintenance Services				5,809.46
Total Purchased Property Services				\$5,809.46
500 <u>Other Purchased Services</u>				
530 Communications				2,812.24
591 Services Purchased Locally				150.00
Total Other Purchased Services				\$2,962.24
600 <u>Supplies</u>				
610 General Supplies				989.28
650 Supplies & Fees – Technology Related				49,269.97
Total Supplies				\$50,259.25
800 <u>Other Objects</u>				
810 Dues and Fees				1,914.11
890 Miscellaneous Expenditures				930.41
Total Other Objects				\$2,844.52
Total 2510 Fiscal Services				\$799,351.58

LEA : 114065503 Muhlenberg SD

Printed 11/26/2024 3:35:49 PM

General Fund (10)

2511 Supervision of Fiscal Services - Head of Component	<u>Elementary</u>	<u>Secondary</u>	<u>Federal</u>	<u>Total</u>
100 <u>Personnel Services – Salaries</u>				
100 Personnel Services – Salaries				210,415.55
Total Personnel Services – Salaries				\$210,415.55
200 <u>Personnel Services – Employee Benefits</u>				
210 Group Insurance – Contracted Provider				39,862.74
220 Social Security Contributions				15,877.73
230 PSERS Retirement Contributions				69,669.43
250 Unemployment Compensation				109.76
260 Workers' Compensation				1,060.18
291 Other Retirement Plans				7,500.00
Total Personnel Services – Employee Benefits				\$134,079.84
400 <u>Purchased Property Services</u>				
430 Repairs and Maintenance Services				421.22
Total Purchased Property Services				\$421.22
600 <u>Supplies</u>				
610 General Supplies				50.32
Total Supplies				\$50.32
800 <u>Other Objects</u>				
810 Dues and Fees				437.91
Total Other Objects				\$437.91
Total 2511 Supervision of Fiscal Services - Head of Component				\$345,404.84

LEA : 114065503 Muhlenberg SD

Printed 11/26/2024 3:35:49 PM

General Fund (10)				
2512 Budgeting Services	<u>Elementary</u>	<u>Secondary</u>	<u>Federal</u>	<u>Total</u>
600 <u>Supplies</u>				
650 Supplies & Fees – Technology Related				6,096.97
Total Supplies				\$6,096.97
Total 2512 Budgeting Services				\$6,096.97

LEA : 114065503 Muhlenberg SD

Printed 11/26/2024 3:35:49 PM

General Fund (10)

2514 Payroll Services

Elementary Secondary Federal Total

100	<u>Personnel Services – Salaries</u>			
100	Personnel Services – Salaries			60,338.47
Total Personnel Services – Salaries				\$60,338.47
200	<u>Personnel Services – Employee Benefits</u>			
210	Group Insurance – Contracted Provider			28,782.96
220	Social Security Contributions			4,356.30
230	PSERS Retirement Contributions			20,515.14
250	Unemployment Compensation			54.88
260	Workers' Compensation			530.09
291	Other Retirement Plans			2,500.00
Total Personnel Services – Employee Benefits				\$56,739.37
400	<u>Purchased Property Services</u>			
430	Repairs and Maintenance Services			215.46
Total Purchased Property Services				\$215.46
600	<u>Supplies</u>			
610	General Supplies			264.51
Total Supplies				\$264.51
Total 2514 Payroll Services				\$117,557.81

LEA : 114065503 Muhlenberg SD

Printed 11/26/2024 3:35:49 PM

General Fund (10)				
2515 Financial Accounting Services	<u>Elementary</u>	<u>Secondary</u>	<u>Federal</u>	<u>Total</u>
100 <u>Personnel Services – Salaries</u>				
100 Personnel Services – Salaries				92,289.00
Total Personnel Services – Salaries				\$92,289.00
200 <u>Personnel Services – Employee Benefits</u>				
210 Group Insurance – Contracted Provider				30,120.55
220 Social Security Contributions				6,889.20
230 PSERS Retirement Contributions				31,208.27
250 Unemployment Compensation				54.88
260 Workers' Compensation				530.09
291 Other Retirement Plans				5,000.00
Total Personnel Services – Employee Benefits				\$73,802.99
400 <u>Purchased Property Services</u>				
430 Repairs and Maintenance Services				4,957.32
Total Purchased Property Services				\$4,957.32
500 <u>Other Purchased Services</u>				
530 Communications				2,812.24
591 Services Purchased Locally				150.00
Total Other Purchased Services				\$2,962.24
600 <u>Supplies</u>				
610 General Supplies				644.23
650 Supplies & Fees – Technology Related				43,173.00
Total Supplies				\$43,817.23
800 <u>Other Objects</u>				
810 Dues and Fees				1,476.20
890 Miscellaneous Expenditures				8.72
Total Other Objects				\$1,484.92
Total 2515 Financial Accounting Services				\$219,313.70

LEA : 114065503 Muhlenberg SD

Printed 11/26/2024 3:35:49 PM

General Fund (10)				
2519 Other Fiscal Services	<u>Elementary</u>	<u>Secondary</u>	<u>Federal</u>	<u>Total</u>
100 <u>Personnel Services – Salaries</u>				
100 Personnel Services – Salaries				60,000.00
Total Personnel Services – Salaries				\$60,000.00
200 <u>Personnel Services – Employee Benefits</u>				
210 Group Insurance – Contracted Provider				21,930.06
220 Social Security Contributions				4,395.80
230 PSERS Retirement Contributions				20,400.06
250 Unemployment Compensation				54.88
260 Workers' Compensation				530.09
291 Other Retirement Plans				2,500.00
Total Personnel Services – Employee Benefits				\$49,810.89
400 <u>Purchased Property Services</u>				
430 Repairs and Maintenance Services				215.46
Total Purchased Property Services				\$215.46
600 <u>Supplies</u>				
610 General Supplies				30.22
Total Supplies				\$30.22
800 <u>Other Objects</u>				
890 Miscellaneous Expenditures				921.69
Total Other Objects				\$921.69
Total 2519 Other Fiscal Services				\$110,978.26

LEA : 114065503 Muhlenberg SD

Printed 11/26/2024 3:35:49 PM

General Fund (10)

2600 Operation and Maintenance of Plant Services	Elementary	Secondary	Federal	Total
100 <u>Personnel Services – Salaries</u>				
100 Personnel Services – Salaries				2,067,595.83
Total Personnel Services – Salaries				\$2,067,595.83
200 <u>Personnel Services – Employee Benefits</u>				
210 Group Insurance – Contracted Provider				669,032.71
220 Social Security Contributions				153,958.68
230 PSERS Retirement Contributions				689,890.28
250 Unemployment Compensation				1,961.99
260 Workers' Compensation				18,950.63
291 Other Retirement Plans				3,851.00
Total Personnel Services – Employee Benefits				\$1,537,645.29
300 <u>Purchased Professional and Technical Services</u>				
330 Other Professional Services				1,873.30
350 Security / Safety Services				366,762.32
Total Purchased Professional and Technical Services				\$368,635.62
400 <u>Purchased Property Services</u>				
410 Cleaning Services				83,910.14
420 Utility Services				98,874.80
430 Repairs and Maintenance Services				315,769.41
440 Rentals				9,350.00
460 Extermination Services				8,394.36
490 Other Purchased Property Services				5,903.10
Total Purchased Property Services				\$522,201.81
500 <u>Other Purchased Services</u>				
522 Automotive Liability Insurance				7,452.00
523 General Property and Liability Insurance				176,578.00
529 Other Insurance				10,900.00
530 Communications				92,451.73
580 Travel				66.81
Total Other Purchased Services				\$287,448.54
600 <u>Supplies</u>				
610 General Supplies	125,936.58	290,214.08	22,853.00	439,003.66
620 Energy				689,022.06
650 Supplies & Fees – Technology Related				9,978.06
Total Supplies	\$125,936.58	\$290,214.08	\$22,853.00	\$1,138,003.78
800 <u>Other Objects</u>				
810 Dues and Fees				995.17
Total Other Objects				\$995.17
Total 2600 Operation and Maintenance of Plant Services	\$125,936.58	\$290,214.08	\$22,853.00	\$5,922,526.04

LEA : 114065503 Muhlenberg SD

Printed 11/26/2024 3:35:49 PM

General Fund (10)

2610 Supervision of Operation and Maintenance of Plant Services	<u>Elementary</u>	<u>Secondary</u>	<u>Federal</u>	<u>Total</u>
100 <u>Personnel Services – Salaries</u>				
100 Personnel Services – Salaries				314,244.37
Total Personnel Services – Salaries				\$314,244.37
200 <u>Personnel Services – Employee Benefits</u>				
210 Group Insurance – Contracted Provider				90,224.07
220 Social Security Contributions				23,259.06
230 PSERS Retirement Contributions				104,960.22
250 Unemployment Compensation				205.80
260 Workers' Compensation				1,987.83
291 Other Retirement Plans				3,851.00
Total Personnel Services – Employee Benefits				\$224,487.98
500 <u>Other Purchased Services</u>				
580 Travel				66.81
Total Other Purchased Services				\$66.81
800 <u>Other Objects</u>				
810 Dues and Fees				385.00
Total Other Objects				\$385.00
Total 2610 Supervision of Operation and Maintenance of Plant Services				\$539,184.16

LEA : 114065503 Muhlenberg SD

Printed 11/26/2024 3:35:49 PM

General Fund (10)

2611 Supervision of Operation and Maintenance of Plant Services – Head of Component	<u>Elementary</u>	<u>Secondary</u>	<u>Federal</u>	<u>Total</u>
100 <u>Personnel Services – Salaries</u>				
100 Personnel Services – Salaries				153,729.22
Total Personnel Services – Salaries				\$153,729.22
200 <u>Personnel Services – Employee Benefits</u>				
210 Group Insurance – Contracted Provider				37,470.01
220 Social Security Contributions				11,502.71
230 PSERS Retirement Contributions				51,309.74
250 Unemployment Compensation				96.04
260 Workers' Compensation				927.65
291 Other Retirement Plans				1,351.00
Total Personnel Services – Employee Benefits				\$102,657.15
500 <u>Other Purchased Services</u>				
580 Travel				66.81
Total Other Purchased Services				\$66.81
800 <u>Other Objects</u>				
810 Dues and Fees				385.00
Total Other Objects				\$385.00
Total 2611 Supervision of Operation and Maintenance of Plant Services – Head of Component				\$256,838.18

LEA : 114065503 Muhlenberg SD

Printed 11/26/2024 3:35:49 PM

General Fund (10)

2619 Supervision of Operation and Maintenance of Plant Services – All Other Supervision				
	<u>Elementary</u>	<u>Secondary</u>	<u>Federal</u>	<u>Total</u>
100 <u>Personnel Services – Salaries</u>				
100 Personnel Services – Salaries				160,515.15
Total Personnel Services – Salaries				\$160,515.15
200 <u>Personnel Services – Employee Benefits</u>				
210 Group Insurance – Contracted Provider				52,754.06
220 Social Security Contributions				11,756.35
230 PSERS Retirement Contributions				53,650.48
250 Unemployment Compensation				109.76
260 Workers' Compensation				1,060.18
291 Other Retirement Plans				2,500.00
Total Personnel Services – Employee Benefits				\$121,830.83
Total 2619 Supervision of Operation and Maintenance of Plant Services – All Other Supervision				\$282,345.98

LEA : 114065503 Muhlenberg SD

General Fund (10)

2620 Operation of Buildings Services	Elementary	Secondary	Federal	Total
100 <u>Personnel Services – Salaries</u>				
100 Personnel Services – Salaries				1,753,351.46
Total Personnel Services – Salaries				\$1,753,351.46
200 <u>Personnel Services – Employee Benefits</u>				
210 Group Insurance – Contracted Provider				578,808.64
220 Social Security Contributions				130,699.62
230 PSERS Retirement Contributions				584,930.06
250 Unemployment Compensation				1,756.19
260 Workers' Compensation				16,962.80
Total Personnel Services – Employee Benefits				\$1,313,157.31
300 <u>Purchased Professional and Technical Services</u>				
330 Other Professional Services				1,873.30
350 Security / Safety Services				(5.00)
Total Purchased Professional and Technical Services				\$1,868.30
400 <u>Purchased Property Services</u>				
410 Cleaning Services				32,118.94
420 Utility Services				98,874.80
430 Repairs and Maintenance Services				271,641.05
440 Rentals				9,350.00
460 Extermination Services				8,394.36
490 Other Purchased Property Services				5,903.10
Total Purchased Property Services				\$426,282.25
500 <u>Other Purchased Services</u>				
523 General Property and Liability Insurance				167,389.00
530 Communications				92,451.73
Total Other Purchased Services				\$259,840.73
600 <u>Supplies</u>				
610 General Supplies	115,408.14	116,390.19		231,798.33
620 Energy				689,022.06
650 Supplies & Fees – Technology Related				7,338.06
Total Supplies	\$115,408.14	\$116,390.19		\$928,158.45
800 <u>Other Objects</u>				
810 Dues and Fees				5.00
Total Other Objects				\$5.00
Total 2620 Operation of Buildings Services	\$115,408.14	\$116,390.19		\$4,682,663.50

LEA : 114065503 Muhlenberg SD

Printed 11/26/2024 3:35:49 PM

General Fund (10)

2630 Care and Upkeep of Grounds Services	<u>Elementary</u>	<u>Secondary</u>	<u>Federal</u>	<u>Total</u>
400 <u>Purchased Property Services</u>				
410 Cleaning Services				51,791.20
430 Repairs and Maintenance Services				98.31
Total Purchased Property Services				\$51,889.51
600 <u>Supplies</u>				
610 General Supplies	4,866.93	4,866.93		9,733.86
Total Supplies	\$4,866.93	\$4,866.93		\$9,733.86
800 <u>Other Objects</u>				
810 Dues and Fees				56.17
Total Other Objects				\$56.17
Total 2630 Care and Upkeep of Grounds Services	\$4,866.93	\$4,866.93		\$61,679.54

LEA : 114065503 Muhlenberg SD

Printed 11/26/2024 3:35:49 PM

General Fund (10)

2650 Vehicle Operation and Maintenance Services (Other Than Student Transportation Vehicles)	<u>Elementary</u>	<u>Secondary</u>	<u>Federal</u>	<u>Total</u>
400 <u>Purchased Property Services</u>				
430 Repairs and Maintenance Services				7,164.49
Total Purchased Property Services				\$7,164.49
600 <u>Supplies</u>				
610 General Supplies	489.83	489.84		979.67
Total Supplies	\$489.83	\$489.84		\$979.67
Total 2650 Vehicle Operation and Maintenance Services (Other Than Student Transportation Vehicles)	\$489.83	\$489.84		\$8,144.16

LEA : 114065503 Muhlenberg SD

Printed 11/26/2024 3:35:49 PM

General Fund (10)				
2660 Safety and Security Services	<u>Elementary</u>	<u>Secondary</u>	<u>Federal</u>	<u>Total</u>
300 <u>Purchased Professional and Technical Services</u>				
350 Security / Safety Services				366,767.32
Total Purchased Professional and Technical Services				\$366,767.32
400 <u>Purchased Property Services</u>				
430 Repairs and Maintenance Services				36,865.56
Total Purchased Property Services				\$36,865.56
600 <u>Supplies</u>				
610 General Supplies	5,171.68	168,467.12	22,853.00	196,491.80
650 Supplies & Fees – Technology Related				2,640.00
Total Supplies	\$5,171.68	\$168,467.12	\$22,853.00	\$199,131.80
800 <u>Other Objects</u>				
810 Dues and Fees				549.00
Total Other Objects				\$549.00
Total 2660 Safety and Security Services	\$5,171.68	\$168,467.12	\$22,853.00	\$603,313.68

LEA : 114065503 Muhlenberg SD

Printed 11/26/2024 3:35:49 PM

General Fund (10)

2690 Other Operation and Maintenance of Plant Services	<u>Elementary</u>	<u>Secondary</u>	<u>Federal</u>	<u>Total</u>
500 <u>Other Purchased Services</u>				
522 Automotive Liability Insurance				7,452.00
523 General Property and Liability Insurance				9,189.00
529 Other Insurance				10,900.00
Total Other Purchased Services				\$27,541.00
Total 2690 Other Operation and Maintenance of Plant Services				\$27,541.00

LEA : 114065503 Muhlenberg SD

Printed 11/26/2024 3:35:49 PM

General Fund (10)

2700 Student Transportation Services	<u>Elementary</u>	<u>Secondary</u>	<u>Federal</u>	<u>Total</u>
100 <u>Personnel Services – Salaries</u>				
100 Personnel Services – Salaries				95,831.07
Total Personnel Services – Salaries				\$95,831.07
200 <u>Personnel Services – Employee Benefits</u>				
210 Group Insurance – Contracted Provider				37,420.49
220 Social Security Contributions				7,121.45
230 PSERS Retirement Contributions				32,480.63
250 Unemployment Compensation				74.09
260 Workers' Compensation				715.62
291 Other Retirement Plans				499.99
Total Personnel Services – Employee Benefits				\$78,312.27
400 <u>Purchased Property Services</u>				
430 Repairs and Maintenance Services				1,443.70
440 Rentals				1,200.00
Total Purchased Property Services				\$2,643.70
500 <u>Other Purchased Services</u>				
511 Student Transportation Services from Another LEA Within the State			4,756.59	1,804,994.42
516 Student Transportation Services From the IU				496,060.69
Total Other Purchased Services			\$4,756.59	\$2,301,055.11
600 <u>Supplies</u>				
610 General Supplies				13,323.37
630 Food				125.00
650 Supplies & Fees – Technology Related				4,750.00
Total Supplies				\$18,198.37
Total 2700 Student Transportation Services			\$4,756.59	\$2,496,040.52

LEA : 114065503 Muhlenberg SD

Printed 11/26/2024 3:35:49 PM

General Fund (10)

2710 Supervision of Student Transportation Services	<u>Elementary</u>	<u>Secondary</u>	<u>Federal</u>	<u>Total</u>
100 <u>Personnel Services – Salaries</u>				
100 Personnel Services – Salaries				77,002.86
Total Personnel Services – Salaries				\$77,002.86
200 <u>Personnel Services – Employee Benefits</u>				
210 Group Insurance – Contracted Provider				37,420.49
220 Social Security Contributions				5,726.06
230 PSERS Retirement Contributions				26,079.10
250 Unemployment Compensation				74.09
260 Workers' Compensation				715.62
291 Other Retirement Plans				499.99
Total Personnel Services – Employee Benefits				\$70,515.35
600 <u>Supplies</u>				
610 General Supplies				252.31
Total Supplies				\$252.31
Total 2710 Supervision of Student Transportation Services				\$147,770.52

LEA : 114065503 Muhlenberg SD

Printed 11/26/2024 3:35:49 PM

General Fund (10)

2711 Supervision of Student Transportation Services – Head of Component	<u>Elementary</u>	<u>Secondary</u>	<u>Federal</u>	<u>Total</u>
100 <u>Personnel Services – Salaries</u>				
100 Personnel Services – Salaries				77,002.86
Total Personnel Services – Salaries				\$77,002.86
200 <u>Personnel Services – Employee Benefits</u>				
210 Group Insurance – Contracted Provider				37,420.49
220 Social Security Contributions				5,726.06
230 PSERS Retirement Contributions				26,079.10
250 Unemployment Compensation				74.09
260 Workers' Compensation				715.62
291 Other Retirement Plans				499.99
Total Personnel Services – Employee Benefits				\$70,515.35
600 <u>Supplies</u>				
610 General Supplies				252.31
Total Supplies				\$252.31
Total 2711 Supervision of Student Transportation Services – Head of Component				\$147,770.52

LEA : 114065503 Muhlenberg SD

Printed 11/26/2024 3:35:49 PM

General Fund (10)

2720 Vehicle Operation Services	<u>Elementary</u>	<u>Secondary</u>	<u>Federal</u>	<u>Total</u>
500 <u>Other Purchased Services</u>				
511 Student Transportation Services from Another LEA Within the State			4,756.59	1,379,209.36
Total Other Purchased Services			\$4,756.59	\$1,379,209.36
Total 2720 Vehicle Operation Services			\$4,756.59	\$1,379,209.36

LEA : 114065503 Muhlenberg SD

Printed 11/26/2024 3:35:49 PM

General Fund (10)				
2730 Monitoring Services				
	<u>Elementary</u>	<u>Secondary</u>	<u>Federal</u>	<u>Total</u>
100 <u>Personnel Services – Salaries</u>				
100 Personnel Services – Salaries				18,828.21
Total Personnel Services – Salaries				\$18,828.21
200 <u>Personnel Services – Employee Benefits</u>				
220 Social Security Contributions				1,395.39
230 PSERS Retirement Contributions				6,401.53
Total Personnel Services – Employee Benefits				\$7,796.92
400 <u>Purchased Property Services</u>				
440 Rentals				1,200.00
Total Purchased Property Services				\$1,200.00
500 <u>Other Purchased Services</u>				
511 Student Transportation Services from Another LEA Within the State				1,525.07
Total Other Purchased Services				\$1,525.07
600 <u>Supplies</u>				
610 General Supplies				12,232.76
650 Supplies & Fees – Technology Related				4,750.00
Total Supplies				\$16,982.76
Total 2730 Monitoring Services				\$46,332.96

LEA : 114065503 Muhlenberg SD

Printed 11/26/2024 3:35:49 PM

General Fund (10)

2740 Vehicle Servicing and Maintenance Services	<u>Elementary</u>	<u>Secondary</u>	<u>Federal</u>	<u>Total</u>
400 <u>Purchased Property Services</u>				
430 Repairs and Maintenance Services				1,443.70
Total Purchased Property Services				\$1,443.70
600 <u>Supplies</u>				
610 General Supplies				838.30
Total Supplies				\$838.30
Total 2740 Vehicle Servicing and Maintenance Services				\$2,282.00

LEA : 114065503 Muhlenberg SD

Printed 11/26/2024 3:35:49 PM

General Fund (10)

2750 Nonpublic Transportation

<u>Elementary</u>	<u>Secondary</u>	<u>Federal</u>	<u>Total</u>
-------------------	------------------	----------------	--------------

500 Other Purchased Services

511 Student Transportation Services from Another LEA Within the State			424,259.99
---	--	--	------------

Total Other Purchased Services			\$424,259.99
---------------------------------------	--	--	---------------------

Total 2750 Nonpublic Transportation			\$424,259.99
--	--	--	---------------------

LEA : 114065503 Muhlenberg SD

Printed 11/26/2024 3:35:49 PM

General Fund (10)

2790 Other Student Transportation Services	<u>Elementary</u>	<u>Secondary</u>	<u>Federal</u>	<u>Total</u>
500 <u>Other Purchased Services</u>				
516 Student Transportation Services From the IU				496,060.69
Total Other Purchased Services				\$496,060.69
600 <u>Supplies</u>				
630 Food				125.00
Total Supplies				\$125.00
Total 2790 Other Student Transportation Services				\$496,185.69

LEA : 114065503 Muhlenberg SD

Printed 11/26/2024 3:35:49 PM

General Fund (10)

2800 Support Services – Central

	<u>Elementary</u>	<u>Secondary</u>	<u>Federal</u>	<u>Total</u>
100 <u>Personnel Services – Salaries</u>				
100 Personnel Services – Salaries				685,282.56
Total Personnel Services – Salaries				\$685,282.56
200 <u>Personnel Services – Employee Benefits</u>				
210 Group Insurance – Contracted Provider				189,796.30
220 Social Security Contributions				50,862.02
230 PSERS Retirement Contributions				225,337.71
240 Tuition Reimbursement				35,363.00
250 Unemployment Compensation				433.56
260 Workers' Compensation				4,187.70
291 Other Retirement Plans				17,000.01
Total Personnel Services – Employee Benefits				\$522,980.30
300 <u>Purchased Professional and Technical Services</u>				
330 Other Professional Services				1,570.00
340 Technical Services				1,063.15
360 Employee Training and Development Services			4,555.00	13,593.55
Total Purchased Professional and Technical Services			\$4,555.00	\$16,226.70
400 <u>Purchased Property Services</u>				
430 Repairs and Maintenance Services			3,283.88	107,434.85
Total Purchased Property Services			\$3,283.88	\$107,434.85
500 <u>Other Purchased Services</u>				
530 Communications			159.36	15,456.71
550 Printing and Binding				33,316.65
580 Travel			6,817.64	10,745.44
591 Services Purchased Locally				5,360.00
Total Other Purchased Services			\$6,977.00	\$64,878.80
600 <u>Supplies</u>				
610 General Supplies			751.61	19,322.79
650 Supplies & Fees – Technology Related			5,798.00	113,102.50
Total Supplies			\$6,549.61	\$132,425.29
800 <u>Other Objects</u>				
810 Dues and Fees			50.00	3,329.00
Total Other Objects			\$50.00	\$3,329.00
Total 2800 Support Services – Central			\$21,415.49	\$1,532,557.50

LEA : 114065503 Muhlenberg SD

Printed 11/26/2024 3:35:49 PM

General Fund (10)				
2810 Planning, Research, Development and Evaluation Services	<u>Elementary</u>	<u>Secondary</u>	<u>Federal</u>	<u>Total</u>
100 <u>Personnel Services – Salaries</u>				
100 Personnel Services – Salaries				1,500.00
Total Personnel Services – Salaries				\$1,500.00
200 <u>Personnel Services – Employee Benefits</u>				
220 Social Security Contributions				114.75
230 PSERS Retirement Contributions				510.00
Total Personnel Services – Employee Benefits				\$624.75
300 <u>Purchased Professional and Technical Services</u>				
340 Technical Services				1,063.15
Total Purchased Professional and Technical Services				\$1,063.15
400 <u>Purchased Property Services</u>				
430 Repairs and Maintenance Services				104,150.97
Total Purchased Property Services				\$104,150.97
500 <u>Other Purchased Services</u>				
530 Communications				12,514.63
Total Other Purchased Services				\$12,514.63
600 <u>Supplies</u>				
610 General Supplies				1,357.77
650 Supplies & Fees – Technology Related				107,304.50
Total Supplies				\$108,662.27
Total 2810 Planning, Research, Development and Evaluation Services				\$228,515.77

LEA : 114065503 Muhlenberg SD

Printed 11/26/2024 3:35:49 PM

General Fund (10)

2820 Information Services	<u>Elementary</u>	<u>Secondary</u>	<u>Federal</u>	<u>Total</u>
500 <u>Other Purchased Services</u>				
530 Communications			159.36	2,942.08
550 Printing and Binding				33,316.65
591 Services Purchased Locally				4,095.00
Total Other Purchased Services			\$159.36	\$40,353.73
600 <u>Supplies</u>				
610 General Supplies				13,754.94
Total Supplies				\$13,754.94
Total 2820 Information Services			\$159.36	\$54,108.67

LEA : 114065503 Muhlenberg SD

Printed 11/26/2024 3:35:49 PM

General Fund (10)

2823 Public Information Services	<u>Elementary</u>	<u>Secondary</u>	<u>Federal</u>	<u>Total</u>
500 <u>Other Purchased Services</u>				
530 Communications			159.36	2,942.08
550 Printing and Binding				33,316.65
591 Services Purchased Locally				4,095.00
Total Other Purchased Services			\$159.36	\$40,353.73
600 <u>Supplies</u>				
610 General Supplies				13,754.94
Total Supplies				\$13,754.94
Total 2823 Public Information Services			\$159.36	\$54,108.67

LEA : 114065503 Muhlenberg SD

Printed 11/26/2024 3:35:49 PM

General Fund (10)

2830 Staff Services

	<u>Elementary</u>	<u>Secondary</u>	<u>Federal</u>	<u>Total</u>
100 <u>Personnel Services – Salaries</u>				
100 Personnel Services – Salaries				181,348.00
Total Personnel Services – Salaries				\$181,348.00
200 <u>Personnel Services – Employee Benefits</u>				
210 Group Insurance – Contracted Provider				34,980.66
220 Social Security Contributions				13,224.29
230 PSERS Retirement Contributions				61,233.34
240 Tuition Reimbursement				35,363.00
250 Unemployment Compensation				109.76
260 Workers' Compensation				1,060.18
291 Other Retirement Plans				7,500.00
Total Personnel Services – Employee Benefits				\$153,471.23
300 <u>Purchased Professional and Technical Services</u>				
330 Other Professional Services				1,570.00
360 Employee Training and Development Services			4,555.00	13,593.55
Total Purchased Professional and Technical Services			\$4,555.00	\$15,163.55
500 <u>Other Purchased Services</u>				
580 Travel			6,817.64	10,745.44
591 Services Purchased Locally				1,265.00
Total Other Purchased Services			\$6,817.64	\$12,010.44
600 <u>Supplies</u>				
610 General Supplies			200.71	3,659.18
Total Supplies			\$200.71	\$3,659.18
800 <u>Other Objects</u>				
810 Dues and Fees				3,279.00
Total Other Objects				\$3,279.00
Total 2830 Staff Services			\$11,573.35	\$368,931.40

LEA : 114065503 Muhlenberg SD

Printed 11/26/2024 3:35:49 PM

General Fund (10)				
2831 Supervision of Staff Services	<u>Elementary</u>	<u>Secondary</u>	<u>Federal</u>	<u>Total</u>
100 <u>Personnel Services – Salaries</u>				
100 Personnel Services – Salaries				181,348.00
Total Personnel Services – Salaries				\$181,348.00
200 <u>Personnel Services – Employee Benefits</u>				
210 Group Insurance – Contracted Provider				34,980.66
220 Social Security Contributions				13,224.29
230 PSERS Retirement Contributions				61,233.34
250 Unemployment Compensation				109.76
260 Workers' Compensation				1,060.18
291 Other Retirement Plans				7,500.00
Total Personnel Services – Employee Benefits				\$118,108.23
500 <u>Other Purchased Services</u>				
580 Travel				2,990.39
Total Other Purchased Services				\$2,990.39
600 <u>Supplies</u>				
610 General Supplies				658.86
Total Supplies				\$658.86
800 <u>Other Objects</u>				
810 Dues and Fees				590.00
Total Other Objects				\$590.00
Total 2831 Supervision of Staff Services				\$303,695.48

LEA : 114065503 Muhlenberg SD

Printed 11/26/2024 3:35:49 PM

General Fund (10)

2832 Recruitment and Placement Services	<u>Elementary</u>	<u>Secondary</u>	<u>Federal</u>	<u>Total</u>
300 <u>Purchased Professional and Technical Services</u>				
330 Other Professional Services				1,570.00
Total Purchased Professional and Technical Services				\$1,570.00
500 <u>Other Purchased Services</u>				
591 Services Purchased Locally				1,265.00
Total Other Purchased Services				\$1,265.00
600 <u>Supplies</u>				
610 General Supplies				2,799.61
Total Supplies				\$2,799.61
800 <u>Other Objects</u>				
810 Dues and Fees				2,689.00
Total Other Objects				\$2,689.00
Total 2832 Recruitment and Placement Services				\$8,323.61

LEA : 114065503 Muhlenberg SD

Printed 11/26/2024 3:35:49 PM

General Fund (10)

2834 Staff Development Services – Non-Instructional, Certified Staff Only	<u>Elementary</u>	<u>Secondary</u>	<u>Federal</u>	<u>Total</u>
200 <u>Personnel Services – Employee Benefits</u>				
240 Tuition Reimbursement				30,039.00
Total Personnel Services – Employee Benefits				\$30,039.00
300 <u>Purchased Professional and Technical Services</u>				
360 Employee Training and Development Services			1,750.00	4,781.00
Total Purchased Professional and Technical Services			\$1,750.00	\$4,781.00
500 <u>Other Purchased Services</u>				
580 Travel			3,030.51	3,105.82
Total Other Purchased Services			\$3,030.51	\$3,105.82
600 <u>Supplies</u>				
610 General Supplies			200.71	200.71
Total Supplies			\$200.71	\$200.71
Total 2834 Staff Development Services – Non-Instructional, Certified Staff Only			\$4,981.22	\$38,126.53

LEA : 114065503 Muhlenberg SD

Printed 11/26/2024 3:35:49 PM

General Fund (10)				
2836 Staff Development Services – Non-Instructional, Non-Certified Staff Only	<u>Elementary</u>	<u>Secondary</u>	<u>Federal</u>	<u>Total</u>
200 <u>Personnel Services – Employee Benefits</u>				
240 Tuition Reimbursement				5,324.00
Total Personnel Services – Employee Benefits				\$5,324.00
300 <u>Purchased Professional and Technical Services</u>				
360 Employee Training and Development Services			2,805.00	8,812.55
Total Purchased Professional and Technical Services			\$2,805.00	\$8,812.55
500 <u>Other Purchased Services</u>				
580 Travel			3,787.13	4,649.23
Total Other Purchased Services			\$3,787.13	\$4,649.23
Total 2836 Staff Development Services – Non-Instructional, Non-Certified Staff Only			\$6,592.13	\$18,785.78

LEA : 114065503 Muhlenberg SD

Printed 11/26/2024 3:35:49 PM

General Fund (10)

2840 Data Processing Services				<u>Elementary</u>	<u>Secondary</u>	<u>Federal</u>	<u>Total</u>
100 <u>Personnel Services – Salaries</u>							
100 Personnel Services – Salaries							502,434.56
Total Personnel Services – Salaries							\$502,434.56
200 <u>Personnel Services – Employee Benefits</u>							
210 Group Insurance – Contracted Provider							154,815.64
220 Social Security Contributions							37,522.98
230 PSERS Retirement Contributions							163,594.37
250 Unemployment Compensation							323.80
260 Workers' Compensation							3,127.52
291 Other Retirement Plans							9,500.01
Total Personnel Services – Employee Benefits							\$368,884.32
Total 2840 Data Processing Services							\$871,318.88

LEA : 114065503 Muhlenberg SD

Printed 11/26/2024 3:35:49 PM

General Fund (10)

2850 State and Federal Agency Liaison Services	<u>Elementary</u>	<u>Secondary</u>	<u>Federal</u>	<u>Total</u>
400 <u>Purchased Property Services</u>				
430 Repairs and Maintenance Services			3,283.88	3,283.88
Total Purchased Property Services			\$3,283.88	\$3,283.88
600 <u>Supplies</u>				
610 General Supplies			550.90	550.90
Total Supplies			\$550.90	\$550.90
800 <u>Other Objects</u>				
810 Dues and Fees			50.00	50.00
Total Other Objects			\$50.00	\$50.00
Total 2850 State and Federal Agency Liaison Services			\$3,884.78	\$3,884.78

LEA : 114065503 Muhlenberg SD

Printed 11/26/2024 3:35:49 PM

General Fund (10)				
2860 Management Services	<u>Elementary</u>	<u>Secondary</u>	<u>Federal</u>	<u>Total</u>
600 <u>Supplies</u>				
650 Supplies & Fees – Technology Related			5,798.00	5,798.00
Total Supplies			\$5,798.00	\$5,798.00
Total 2860 Management Services			\$5,798.00	\$5,798.00

LEA : 114065503 Muhlenberg SD

Printed 11/26/2024 3:35:49 PM

General Fund (10)

2900 Other Support Services	<u>Elementary</u>	<u>Secondary</u>	<u>Federal</u>	<u>Total</u>
500 <u>Other Purchased Services</u>				
595 IU Payments By Withholding				42,058.21
Total Other Purchased Services				\$42,058.21
Total 2900 Other Support Services				\$42,058.21

LEA : 114065503 Muhlenberg SD

Printed 11/26/2024 3:35:49 PM

General Fund (10)

2910 Support Services Not Listed Elsewhere In the 2000 Series

Elementary Secondary Federal Total

500 <u>Other Purchased Services</u>				
595 IU Payments By Withholding				42,058.21
Total Other Purchased Services				\$42,058.21
Total 2910 Support Services Not Listed Elsewhere In the 2000 Series				\$42,058.21

LEA : 114065503 Muhlenberg SD

Printed 11/26/2024 3:36:08 PM

General Fund (10)

3000 Operation of Non-Instructional Services		<u>Total</u>
100 <u>Personnel Services – Salaries</u>		
100 Personnel Services – Salaries		1,101,958.58
Total Personnel Services – Salaries		\$1,101,958.58
200 <u>Personnel Services – Employee Benefits</u>		
210 Group Insurance – Contracted Provider		114,009.76
220 Social Security Contributions		82,558.91
230 PSERS Retirement Contributions		358,646.74
250 Unemployment Compensation		274.40
260 Workers' Compensation		2,650.44
291 Other Retirement Plans		1,690.00
Total Personnel Services – Employee Benefits		\$559,830.25
300 <u>Purchased Professional and Technical Services</u>		
322 Professional Educational Services – Ius		279.00
323 Professional Educational Services – Other Educational Agencies		100.00
329 Professional Educational Services – Other		1,185.15
330 Other Professional Services		(730.00)
350 Security / Safety Services		31,020.58
390 Other Purchased Professional and Technical Services		3,900.00
Total Purchased Professional and Technical Services		\$35,754.73
400 <u>Purchased Property Services</u>		
410 Cleaning Services		205.00
430 Repairs and Maintenance Services		10,785.35
440 Rentals		4,618.65
Total Purchased Property Services		\$15,609.00
500 <u>Other Purchased Services</u>		
510 Student Transportation Services		104,323.25
550 Printing and Binding		1,815.11
580 Travel		622.41
591 Services Purchased Locally		90.00
Total Other Purchased Services		\$106,850.77
600 <u>Supplies</u>		
610 General Supplies		92,791.66
630 Food		7,683.12
650 Supplies & Fees – Technology Related		10,130.00
Total Supplies		\$110,604.78
800 <u>Other Objects</u>		
810 Dues and Fees		9,275.80
890 Miscellaneous Expenditures		2,298.00
Total Other Objects		\$11,573.80
Total 3000 Operation of Non-Instructional Services		\$1,942,181.91

LEA : 114065503 Muhlenberg SD

Printed 11/26/2024 3:36:08 PM

General Fund (10)

3200 Student Activities

	<u>Elementary</u>	<u>Secondary</u>	<u>Federal</u>	<u>Total</u>
100 <u>Personnel Services – Salaries</u>				
100 Personnel Services – Salaries				1,010,074.59
Total Personnel Services – Salaries				\$1,010,074.59
200 <u>Personnel Services – Employee Benefits</u>				
210 Group Insurance – Contracted Provider				84,751.46
220 Social Security Contributions				76,147.98
230 PSERS Retirement Contributions				335,851.52
250 Unemployment Compensation				219.52
260 Workers' Compensation				2,120.35
291 Other Retirement Plans				1,690.00
Total Personnel Services – Employee Benefits				\$500,780.83
300 <u>Purchased Professional and Technical Services</u>				
330 Other Professional Services				(730.00)
350 Security / Safety Services				15,763.75
390 Other Purchased Professional and Technical Services				3,900.00
Total Purchased Professional and Technical Services				\$18,933.75
400 <u>Purchased Property Services</u>				
410 Cleaning Services				205.00
430 Repairs and Maintenance Services				10,785.35
440 Rentals				2,893.65
Total Purchased Property Services				\$13,884.00
500 <u>Other Purchased Services</u>				
510 Student Transportation Services				104,323.25
550 Printing and Binding				1,409.63
580 Travel				622.41
591 Services Purchased Locally			90.00	90.00
Total Other Purchased Services			\$90.00	\$106,445.29
600 <u>Supplies</u>				
610 General Supplies				66,197.57
630 Food			519.97	5,918.47
650 Supplies & Fees – Technology Related				10,130.00
Total Supplies			\$519.97	\$82,246.04
800 <u>Other Objects</u>				
810 Dues and Fees				9,275.80
890 Miscellaneous Expenditures				2,298.00
Total Other Objects				\$11,573.80
Total 3200 Student Activities			\$609.97	\$1,743,938.30

LEA : 114065503 Muhlenberg SD

Printed 11/26/2024 3:36:08 PM

General Fund (10)

3300 Community Services

	<u>Elementary</u>	<u>Secondary</u>	<u>Federal</u>	<u>Total</u>
100 <u>Personnel Services – Salaries</u>				
100 Personnel Services – Salaries			68,030.30	91,883.99
Total Personnel Services – Salaries			\$68,030.30	\$91,883.99
200 <u>Personnel Services – Employee Benefits</u>				
210 Group Insurance – Contracted Provider			14,107.18	29,258.30
220 Social Security Contributions				6,410.93
230 PSERS Retirement Contributions				22,795.22
250 Unemployment Compensation				54.88
260 Workers' Compensation				530.09
Total Personnel Services – Employee Benefits			\$14,107.18	\$59,049.42
300 <u>Purchased Professional and Technical Services</u>				
322 Professional Educational Services – lus			279.00	279.00
323 Professional Educational Services – Other Educational Agencies			100.00	100.00
329 Professional Educational Services – Other			1,185.15	1,185.15
350 Security / Safety Services				15,256.83
Total Purchased Professional and Technical Services			\$1,564.15	\$16,820.98
500 <u>Other Purchased Services</u>				
550 Printing and Binding			405.48	405.48
Total Other Purchased Services			\$405.48	\$405.48
600 <u>Supplies</u>				
610 General Supplies			25,377.19	25,377.19
630 Food			1,764.65	1,764.65
Total Supplies			\$27,141.84	\$27,141.84
Total 3300 Community Services			\$111,248.95	\$195,301.71

LEA : 114065503 Muhlenberg SD

Printed 11/26/2024 3:36:08 PM

General Fund (10)

3400 Scholarships and Awards	<u>Elementary</u>	<u>Secondary</u>	<u>Federal</u>	<u>Total</u>
400 <u>Purchased Property Services</u>				
440 Rentals				1,725.00
Total Purchased Property Services				\$1,725.00
600 <u>Supplies</u>				
610 General Supplies				1,216.90
Total Supplies				\$1,216.90
Total 3400 Scholarships and Awards				\$2,941.90

LEA : 114065503 Muhlenberg SD

Printed 11/26/2024 3:36:27 PM

General Fund (10)

4000 Facilities Acquisition, Construction and Improvement Services		<u>Total</u>
400 <u>Purchased Property Services</u>		
450 Construction Services		522,060.19
Total Purchased Property Services		\$522,060.19
700 <u>Property</u>		
739 Leases - Other		600,253.74
Total Property		\$600,253.74
Total 4000 Facilities Acquisition, Construction and Improvement Services		\$1,122,313.93

LEA : 114065503 Muhlenberg SD

Printed 11/26/2024 3:36:27 PM

General Fund (10)

4500 Building Acquisition and Construction Services – Original and Additional	<u>Elementary</u>	<u>Secondary</u>	<u>Federal</u>	<u>Total</u>
400 <u>Purchased Property Services</u>				
450 Construction Services				522,060.19
Total Purchased Property Services				\$522,060.19
700 <u>Property</u>				
739 Leases - Other				600,253.74
Total Property				\$600,253.74
Total 4500 Building Acquisition and Construction Services – Original and Additional				\$1,122,313.93

LEA : 114065503 Muhlenberg SD

Printed 11/26/2024 3:36:45 PM

General Fund (10)

5000 Other Expenditures and Financing Uses		<u>Total</u>
800 <u>Other Objects</u>		
830 Interest		38,844.90
880 Refunds of Prior Years' Receipts		1,559.79
Total Other Objects		\$40,404.69
900 <u>Other Uses of Funds</u>		
910 Redemption of Principal		262,251.52
932 Capital Reserve Fund Transfers Applicable To Fund 32		1,106,503.00
939 Other Fund Transfers		6,042,854.58
Total Other Uses of Funds		\$7,411,609.10
Total 5000 Other Expenditures and Financing Uses		\$7,452,013.79

LEA : 114065503 Muhlenberg SD

Printed 11/26/2024 3:36:45 PM

General Fund (10)

5100 Debt Service / Other Expenditures and Financing Uses	<u>Elementary</u>	<u>Secondary</u>	<u>Federal</u>	<u>Total</u>
800 <u>Other Objects</u>				
830 Interest				38,844.90
880 Refunds of Prior Years' Receipts				1,559.79
Total Other Objects				\$40,404.69
900 <u>Other Uses of Funds</u>				
910 Redemption of Principal				262,251.52
Total Other Uses of Funds				\$262,251.52
Total 5100 Debt Service / Other Expenditures and Financing Uses				\$302,656.21

LEA : 114065503 Muhlenberg SD

Printed 11/26/2024 3:36:45 PM

General Fund (10)

5130 Refund of Prior Year Revenues / Receipts	<u>Elementary</u>	<u>Secondary</u>	<u>Federal</u>	<u>Total</u>
800 <u>Other Objects</u>				
880 Refunds of Prior Years' Receipts				1,559.79
Total Other Objects				\$1,559.79
Total 5130 Refund of Prior Year Revenues / Receipts				\$1,559.79

LEA : 114065503 Muhlenberg SD

Printed 11/26/2024 3:36:45 PM

General Fund (10)

5140 Leases and Other Right-to-Use Arrangements	<u>Elementary</u>	<u>Secondary</u>	<u>Federal</u>	<u>Total</u>
800 <u>Other Objects</u>				
830 Interest				38,844.90
Total Other Objects				\$38,844.90
900 <u>Other Uses of Funds</u>				
910 Redemption of Principal				262,251.52
Total Other Uses of Funds				\$262,251.52
Total 5140 Leases and Other Right-to-Use Arrangements				\$301,096.42

LEA : 114065503 Muhlenberg SD

Printed 11/26/2024 3:36:45 PM

General Fund (10)

5200 Interfund Transfers – Out	<u>Elementary</u>	<u>Secondary</u>	<u>Federal</u>	<u>Total</u>
900 <u>Other Uses of Funds</u>				
932 Capital Reserve Fund Transfers Applicable To Fund 32				1,106,503.00
939 Other Fund Transfers				6,042,854.58
Total Other Uses of Funds				\$7,149,357.58
Total 5200 Interfund Transfers – Out				\$7,149,357.58

LEA : 114065503 Muhlenberg SD

Printed 11/26/2024 3:36:45 PM

General Fund (10)

5230 Capital Projects Fund Transfers	<u>Elementary</u>	<u>Secondary</u>	<u>Federal</u>	<u>Total</u>
900 <u>Other Uses of Funds</u>				
932 Capital Reserve Fund Transfers Applicable To Fund 32				1,106,503.00
Total Other Uses of Funds				\$1,106,503.00
Total 5230 Capital Projects Fund Transfers				\$1,106,503.00

LEA : 114065503 Muhlenberg SD

Printed 11/26/2024 3:36:45 PM

General Fund (10)

5240 Debt Service Fund Transfers	<u>Elementary</u>	<u>Secondary</u>	<u>Federal</u>	<u>Total</u>
900 <u>Other Uses of Funds</u>				
939 Other Fund Transfers				6,042,854.58
Total Other Uses of Funds				\$6,042,854.58
Total 5240 Debt Service Fund Transfers				\$6,042,854.58

LEA : 114065503 Muhlenberg SD

Printed 11/26/2024 3:36:13 PM

Student Sponsored Activity Fund (21)

3000 Operation of Non-Instructional Services		<u>Total</u>
400 <u>Purchased Property Services</u>		
440 Rentals		12,858.91
Total Purchased Property Services		\$12,858.91
500 <u>Other Purchased Services</u>		
550 Printing and Binding		9,411.78
580 Travel		39,094.96
591 Services Purchased Locally		8,785.00
Total Other Purchased Services		\$57,291.74
600 <u>Supplies</u>		
610 General Supplies		48,190.33
630 Food		90,927.01
640 Books and Periodicals		1,632.20
Total Supplies		\$140,749.54
800 <u>Other Objects</u>		
810 Dues and Fees		1,245.97
890 Miscellaneous Expenditures		21,228.99
Total Other Objects		\$22,474.96
Total 3000 Operation of Non-Instructional Services		\$233,375.15

LEA : 114065503 Muhlenberg SD

Printed 11/26/2024 3:36:13 PM

Student Sponsored Activity Fund (21)

3200 Student Activities	<u>Elementary</u>	<u>Secondary</u>	<u>Federal</u>	<u>Total</u>
400 <u>Purchased Property Services</u>				
440 Rentals				12,858.91
Total Purchased Property Services				\$12,858.91
500 <u>Other Purchased Services</u>				
550 Printing and Binding				9,411.78
580 Travel				39,094.96
591 Services Purchased Locally				8,785.00
Total Other Purchased Services				\$57,291.74
600 <u>Supplies</u>				
610 General Supplies				48,190.33
630 Food				90,927.01
640 Books and Periodicals				1,632.20
Total Supplies				\$140,749.54
800 <u>Other Objects</u>				
810 Dues and Fees				1,245.97
890 Miscellaneous Expenditures				3,643.99
Total Other Objects				\$4,889.96
Total 3200 Student Activities				\$215,790.15

LEA : 114065503 Muhlenberg SD

Printed 11/26/2024 3:36:13 PM

Student Sponsored Activity Fund (21)

3400 Scholarships and Awards

<u>Elementary</u>	<u>Secondary</u>	<u>Federal</u>	<u>Total</u>
-------------------	------------------	----------------	--------------

800 Other Objects

890 Miscellaneous Expenditures				17,585.00
--------------------------------	--	--	--	-----------

Total Other Objects				\$17,585.00
---------------------	--	--	--	-------------

Total 3400 Scholarships and Awards				\$17,585.00
------------------------------------	--	--	--	-------------

LEA : 114065503 Muhlenberg SD

Printed 11/26/2024 3:36:18 PM

Athletic / School-Sponsored Extra Curricular Activities Fund (29)

3000 Operation of Non-Instructional Services		<u>Total</u>
500 <u>Other Purchased Services</u>		
580 Travel		3,451.58
591 Services Purchased Locally		48,747.50
Total Other Purchased Services		\$52,199.08
600 <u>Supplies</u>		
610 General Supplies		3,329.24
630 Food		2,625.84
Total Supplies		\$5,955.08
800 <u>Other Objects</u>		
810 Dues and Fees		14,548.30
Total Other Objects		\$14,548.30
Total 3000 Operation of Non-Instructional Services		\$72,702.46

LEA : 114065503 Muhlenberg SD

Printed 11/26/2024 3:36:18 PM

Athletic / School-Sponsored Extra Curricular Activities Fund (29)

3200 Student Activities	<u>Elementary</u>	<u>Secondary</u>	<u>Federal</u>	<u>Total</u>
500 <u>Other Purchased Services</u>				
580 Travel				3,451.58
591 Services Purchased Locally				48,747.50
Total Other Purchased Services				\$52,199.08
600 <u>Supplies</u>				
610 General Supplies				3,329.24
630 Food				2,625.84
Total Supplies				\$5,955.08
800 <u>Other Objects</u>				
810 Dues and Fees				14,548.30
Total Other Objects				\$14,548.30
Total 3200 Student Activities				\$72,702.46

LEA : 114065503 Muhlenberg SD

Printed 11/26/2024 3:35:57 PM

Capital Reserve Fund - § 1431 (32)

2000 Support Services		<u>Total</u>
400 <u>Purchased Property Services</u>		
430 Repairs and Maintenance Services		65,154.00
Total Purchased Property Services		\$65,154.00
700 <u>Property</u>		
762 Capitalized Equipment - Replacement		118,977.53
Total Property		\$118,977.53
Total 2000 Support Services		\$184,131.53

LEA : 114065503 Muhlenberg SD

Printed 11/26/2024 3:35:57 PM

Capital Reserve Fund - § 1431 (32)

2600 Operation and Maintenance of Plant Services	<u>Elementary</u>	<u>Secondary</u>	<u>Federal</u>	<u>Total</u>
400 <u>Purchased Property Services</u>				
430 Repairs and Maintenance Services				65,154.00
Total Purchased Property Services				\$65,154.00
700 <u>Property</u>				
762 Capitalized Equipment - Replacement				118,977.53
Total Property				\$118,977.53
Total 2600 Operation and Maintenance of Plant Services				\$184,131.53

LEA : 114065503 Muhlenberg SD

Printed 11/26/2024 3:35:57 PM

Capital Reserve Fund - § 1431 (32)

2620 Operation of Buildings Services	<u>Elementary</u>	<u>Secondary</u>	<u>Federal</u>	<u>Total</u>
400 <u>Purchased Property Services</u>				
430 Repairs and Maintenance Services				65,154.00
Total Purchased Property Services				\$65,154.00
700 <u>Property</u>				
762 Capitalized Equipment - Replacement				82,537.53
Total Property				\$82,537.53
Total 2620 Operation of Buildings Services				\$147,691.53

LEA : 114065503 Muhlenberg SD

Printed 11/26/2024 3:35:57 PM

Capital Reserve Fund - § 1431 (32)

2660 Safety and Security Services

<u>Elementary</u>	<u>Secondary</u>	<u>Federal</u>	<u>Total</u>
-------------------	------------------	----------------	--------------

700 Property

762 Capitalized Equipment - Replacement			36,440.00
---	--	--	-----------

Total Property			\$36,440.00
-----------------------	--	--	--------------------

Total 2660 Safety and Security Services			\$36,440.00
--	--	--	--------------------

LEA : 114065503 Muhlenberg SD

Printed 11/26/2024 3:36:23 PM

Capital Reserve Fund - § 1431 (32)

3000 Operation of Non-Instructional Services

Total

600 <u>Supplies</u>	
610 General Supplies	55,659.30
Total Supplies	\$55,659.30
700 <u>Property</u>	
762 Capitalized Equipment - Replacement	42,784.54
Total Property	\$42,784.54
Total 3000 Operation of Non-Instructional Services	\$98,443.84

LEA : 114065503 Muhlenberg SD

Printed 11/26/2024 3:36:23 PM

Capital Reserve Fund - § 1431 (32)

3200 Student Activities	<u>Elementary</u>	<u>Secondary</u>	<u>Federal</u>	<u>Total</u>
600 <u>Supplies</u>				
610 General Supplies				55,659.30
Total Supplies				\$55,659.30
700 <u>Property</u>				
762 Capitalized Equipment - Replacement				42,784.54
Total Property				\$42,784.54
Total 3200 Student Activities				\$98,443.84

LEA : 114065503 Muhlenberg SD

Printed 11/26/2024 3:36:34 PM

Capital Reserve Fund - § 1431 (32)	
4000 Facilities Acquisition, Construction and Improvement Services	<u>Total</u>
300 <u>Purchased Professional and Technical Services</u>	
330 Other Professional Services	583,966.79
Total Purchased Professional and Technical Services	\$583,966.79
400 <u>Purchased Property Services</u>	
450 Construction Services	167,445.00
Total Purchased Property Services	\$167,445.00
Total 4000 Facilities Acquisition, Construction and Improvement Services	\$751,411.79

LEA : 114065503 Muhlenberg SD

Printed 11/26/2024 3:36:34 PM

Capital Reserve Fund - § 1431 (32)

4300 Architecture and Engineering Services / Educational Specifications Development – Original and Additional	<u>Elementary</u>	<u>Secondary</u>	<u>Federal</u>	<u>Total</u>
300 <u>Purchased Professional and Technical Services</u>				
330 Other Professional Services				476,054.30
Total Purchased Professional and Technical Services				\$476,054.30
Total 4300 Architecture and Engineering Services / Educational Specifications Development – Original and Additional				\$476,054.30

LEA : 114065503 Muhlenberg SD

Printed 11/26/2024 3:36:34 PM

Capital Reserve Fund - § 1431 (32)

4400 Architecture and Engineering Services / Educational Specifications – Improvements

Elementary

Secondary

Federal

Total

300 Purchased Professional and Technical Services

330 Other Professional Services

107,912.49

Total Purchased Professional and Technical Services

\$107,912.49

Total 4400 Architecture and Engineering Services / Educational Specifications – Improvements

\$107,912.49

LEA : 114065503 Muhlenberg SD

Printed 11/26/2024 3:36:34 PM

Capital Reserve Fund - § 1431 (32)

4500 Building Acquisition and Construction Services – Original and Additional

Elementary

Secondary

Federal

Total

400 Purchased Property Services

450 Construction Services

167,445.00

Total Purchased Property Services				\$167,445.00
-----------------------------------	--	--	--	--------------

Total 4500 Building Acquisition and Construction Services – Original and Additional				\$167,445.00
---	--	--	--	--------------

LEA : 114065503 Muhlenberg SD

Printed 11/26/2024 3:36:03 PM

Other Capital Projects Fund (39)

2000 Support Services

Total

800 Other Objects

810 Dues and Fees

237,460.00

Total Other Objects

\$237,460.00

Total 2000 Support Services

\$237,460.00

LEA : 114065503 Muhlenberg SD

Printed 11/26/2024 3:36:03 PM

Other Capital Projects Fund (39)

2300 Support Services – Administration

Elementary

Secondary

Federal

Total

800 Other Objects

810 Dues and Fees

237,460.00

Total Other Objects				\$237,460.00
Total 2300 Support Services – Administration				\$237,460.00

LEA : 114065503 Muhlenberg SD

Printed 11/26/2024 3:36:03 PM

Other Capital Projects Fund (39)

2390 Other Administration Services

<u>Elementary</u>	<u>Secondary</u>	<u>Federal</u>	<u>Total</u>
-------------------	------------------	----------------	--------------

800 Other Objects

810 Dues and Fees			237,460.00
-------------------	--	--	------------

Total Other Objects			\$237,460.00
----------------------------	--	--	---------------------

Total 2390 Other Administration Services			\$237,460.00
---	--	--	---------------------

LEA : 114065503 Muhlenberg SD

Printed 11/26/2024 3:36:38 PM

Other Capital Projects Fund (39)

4000 Facilities Acquisition, Construction and Improvement Services

Total

300 Purchased Professional and Technical Services

330 Other Professional Services	2,231,620.12
---------------------------------	--------------

Total Purchased Professional and Technical Services	\$2,231,620.12
---	----------------

400 Purchased Property Services

450 Construction Services	223,384.30
---------------------------	------------

Total Purchased Property Services	\$223,384.30
-----------------------------------	--------------

Total 4000 Facilities Acquisition, Construction and Improvement Services	\$2,455,004.42
--	----------------

LEA : 114065503 Muhlenberg SD

Printed 11/26/2024 3:36:38 PM

Other Capital Projects Fund (39)

4200 Existing Site Improvement Services

<u>Elementary</u>	<u>Secondary</u>	<u>Federal</u>	<u>Total</u>
-------------------	------------------	----------------	--------------

400 Purchased Property Services

450 Construction Services			218,384.30
---------------------------	--	--	------------

Total Purchased Property Services			\$218,384.30
-----------------------------------	--	--	--------------

Total 4200 Existing Site Improvement Services			\$218,384.30
---	--	--	--------------

LEA : 114065503 Muhlenberg SD

Printed 11/26/2024 3:36:38 PM

Other Capital Projects Fund (39)

4300 Architecture and Engineering Services / Educational Specifications Development – Original and Additional	<u>Elementary</u>	<u>Secondary</u>	<u>Federal</u>	<u>Total</u>
300 <u>Purchased Professional and Technical Services</u>				
330 Other Professional Services				1,522,981.57
Total Purchased Professional and Technical Services				\$1,522,981.57
Total 4300 Architecture and Engineering Services / Educational Specifications Development – Original and Additional				\$1,522,981.57

LEA : 114065503 Muhlenberg SD

Other Capital Projects Fund (39)

4400 Architecture and Engineering Services / Educational Specifications – Improvements	<u>Elementary</u>	<u>Secondary</u>	<u>Federal</u>	<u>Total</u>
300 <u>Purchased Professional and Technical Services</u>				
330 Other Professional Services				708,638.55
Total Purchased Professional and Technical Services				\$708,638.55
Total 4400 Architecture and Engineering Services / Educational Specifications – Improvements				\$708,638.55

LEA : 114065503 Muhlenberg SD

Printed 11/26/2024 3:36:38 PM

Other Capital Projects Fund (39)

4500 Building Acquisition and Construction Services – Original and Additional	<u>Elementary</u>	<u>Secondary</u>	<u>Federal</u>	<u>Total</u>
400 <u>Purchased Property Services</u>				
450 Construction Services				5,000.00
Total Purchased Property Services				\$5,000.00
Total 4500 Building Acquisition and Construction Services – Original and Additional				\$5,000.00

LEA : 114065503 Muhlenberg SD

Printed 11/26/2024 3:36:52 PM

Debt Service Fund (40)

5000 Other Expenditures and Financing Uses

Total

800 <u>Other Objects</u>	
830 Interest	822,855.00
Total Other Objects	\$822,855.00
900 <u>Other Uses of Funds</u>	
910 Redemption of Principal	5,220,000.00
Total Other Uses of Funds	\$5,220,000.00
Total 5000 Other Expenditures and Financing Uses	\$6,042,855.00

LEA : 114065503 Muhlenberg SD

Printed 11/26/2024 3:36:52 PM

Debt Service Fund (40)

5100 Debt Service / Other Expenditures and Financing Uses	<u>Elementary</u>	<u>Secondary</u>	<u>Federal</u>	<u>Total</u>
800 <u>Other Objects</u>				
830 Interest				822,855.00
Total Other Objects				\$822,855.00
900 <u>Other Uses of Funds</u>				
910 Redemption of Principal				5,220,000.00
Total Other Uses of Funds				\$5,220,000.00
Total 5100 Debt Service / Other Expenditures and Financing Uses				\$6,042,855.00

LEA : 114065503 Muhlenberg SD

Printed 11/26/2024 3:36:52 PM

Debt Service Fund (40)

5110 Debt Service	<u>Elementary</u>	<u>Secondary</u>	<u>Federal</u>	<u>Total</u>
800 <u>Other Objects</u>				
830 Interest				822,855.00
Total Other Objects				\$822,855.00
900 <u>Other Uses of Funds</u>				
910 Redemption of Principal				5,220,000.00
Total Other Uses of Funds				\$5,220,000.00
Total 5110 Debt Service				\$6,042,855.00

LEA : 114065503 Muhlenberg SD

Printed 11/26/2024 3:36:57 PM

	<u>General Fund(10)</u>	<u>Student Sponsored Activity Fund(21)</u>	<u>Public Purpose Trust(27)</u>	<u>Other Compt Approved (28)</u>	<u>Athletic / Activity(29)</u>
1000 <u>Instruction</u>					
1100 Regular Programs - Elementary / Secondary	28,546,352.74				
1200 Special Programs - Elementary / Secondary	11,633,413.93				
1300 Vocational Education	2,572,417.69				
1400 Other Instructional Programs - Elementary / Secondary	1,281,715.30				
1500 Nonpublic School Programs	30,296.95				
Total Instruction	\$44,064,196.61				
2000 <u>Support Services</u>					
2100 Support Services - Students	4,294,009.47				
2200 Support Services - Instructional Staff	2,425,561.38				
2300 Support Services - Administration	5,191,057.31				
2400 Support Services - Pupil Health	1,109,077.00				
2500 Support Services - Business	799,351.58				
2600 Operation and Maintenance of Plant Services	5,922,526.04				
2700 Student Transportation Services	2,496,040.52				
2800 Support Services - Central	1,532,557.50				
2900 Other Support Services	42,058.21				
Total Support Services	\$23,812,239.01				
3000 <u>Operation of Non-Instructional Services</u>					
3200 Student Activities	1,743,938.30	215,790.15			72,702.46
3300 Community Services	195,301.71				
3400 Scholarships and Awards	2,941.90	17,585.00			
Total Operation of Non-Instructional Services	\$1,942,181.91	\$233,375.15			\$72,702.46
4000 <u>Facilities Acquisition, Construction and Improvement Services</u>					
4200 Existing Site Improvement Services					
4300 Architecture and Engineering Services / Educational Specifications Development - Original and Additional					
4400 Architecture and Engineering Services / Educational Specifications - Improvements					
4500 Building Acquisition and Construction Services - Original and Additional	1,122,313.93				
Total Facilities Acquisition, Construction and Improvement Services	\$1,122,313.93				
5000 <u>Other Expenditures and Financing Uses</u>					
5100 Debt Service / Other Expenditures and Financing Uses	302,656.21				
5200 Interfund Transfers - Out	7,149,357.58				
Total Other Expenditures and Financing Uses	\$7,452,013.79				
TOTAL ACTUAL EXPENDITURES & OTHER FINANCING USES	\$78,392,945.25	\$233,375.15			\$72,702.46

LEA : 114065503 Muhlenberg SD

Printed 11/26/2024 3:36:57 PM

	<u>Capital Reserve (690.1850)(31)</u>	<u>Capital Reserve (1431)(32)</u>	<u>Other Capital Projects Fund(39)</u>	<u>Debt Service(40)</u>	<u>Permanent(90)</u>
1000 <u>Instruction</u>					
1100 Regular Programs - Elementary / Secondary					
1200 Special Programs - Elementary / Secondary					
1300 Vocational Education					
1400 Other Instructional Programs - Elementary / Secondary					
1500 Nonpublic School Programs					
Total Instruction					
2000 <u>Support Services</u>					
2100 Support Services - Students					
2200 Support Services - Instructional Staff					
2300 Support Services - Administration			237,460.00		
2400 Support Services - Pupil Health					
2500 Support Services - Business					
2600 Operation and Maintenance of Plant Services		184,131.53			
2700 Student Transportation Services					
2800 Support Services - Central					
2900 Other Support Services					
Total Support Services		\$184,131.53	\$237,460.00		
3000 <u>Operation of Non-Instructional Services</u>					
3200 Student Activities		98,443.84			
3300 Community Services					
3400 Scholarships and Awards					
Total Operation of Non-Instructional Services		\$98,443.84			
4000 <u>Facilities Acquisition, Construction and Improvement Services</u>					
4200 Existing Site Improvement Services			218,384.30		
4300 Architecture and Engineering Services / Educational Specifications Development - Original and Additional		476,054.30	1,522,981.57		
4400 Architecture and Engineering Services / Educational Specifications - Improvements		107,912.49	708,638.55		
4500 Building Acquisition and Construction Services - Original and Additional		167,445.00	5,000.00		
Total Facilities Acquisition, Construction and Improvement Services		\$751,411.79	\$2,455,004.42		
5000 <u>Other Expenditures and Financing Uses</u>					
5100 Debt Service / Other Expenditures and Financing Uses				6,042,855.00	
5200 Interfund Transfers - Out					
Total Other Expenditures and Financing Uses				\$6,042,855.00	
TOTAL ACTUAL EXPENDITURES & OTHER FINANCING USES		\$1,033,987.16	\$2,692,464.42	\$6,042,855.00	

LEA : 114065503 Muhlenberg SD

Printed 11/26/2024 3:36:57 PM

	<u>Total</u>
1000 <u>Instruction</u>	
1100 Regular Programs - Elementary / Secondary	28,546,352.74
1200 Special Programs - Elementary / Secondary	11,633,413.93
1300 Vocational Education	2,572,417.69
1400 Other Instructional Programs - Elementary / Secondary	1,281,715.30
1500 Nonpublic School Programs	30,296.95
Total Instruction	\$44,064,196.61
2000 <u>Support Services</u>	
2100 Support Services - Students	4,294,009.47
2200 Support Services - Instructional Staff	2,425,561.38
2300 Support Services - Administration	5,428,517.31
2400 Support Services - Pupil Health	1,109,077.00
2500 Support Services - Business	799,351.58
2600 Operation and Maintenance of Plant Services	6,106,657.57
2700 Student Transportation Services	2,496,040.52
2800 Support Services - Central	1,532,557.50
2900 Other Support Services	42,058.21
Total Support Services	\$24,233,830.54
3000 <u>Operation of Non-Instructional Services</u>	
3200 Student Activities	2,130,874.75
3300 Community Services	195,301.71
3400 Scholarships and Awards	20,526.90
Total Operation of Non-Instructional Services	\$2,346,703.36
4000 <u>Facilities Acquisition, Construction and Improvement Services</u>	
4200 Existing Site Improvement Services	218,384.30
4300 Architecture and Engineering Services / Educational Specifications Development - Original and Additional	1,999,035.87
4400 Architecture and Engineering Services / Educational Specifications - Improvements	816,551.04
4500 Building Acquisition and Construction Services - Original and Additional	1,294,758.93
Total Facilities Acquisition, Construction and Improvement Services	\$4,328,730.14
5000 <u>Other Expenditures and Financing Uses</u>	
5100 Debt Service / Other Expenditures and Financing Uses	6,345,511.21
5200 Interfund Transfers - Out	7,149,357.58
Total Other Expenditures and Financing Uses	\$13,494,868.79
TOTAL ACTUAL EXPENDITURES & OTHER FINANCING USES	\$88,468,329.44

LEA : 114065503 Muhlenberg SD

Printed 11/26/2024 3:37:11 PM

PSERS Salary Data (Salary Data should relate to the General Fund only)

Amount	Description	Amount
	Total Salary Base for salaries subject to PSERS withholding	31,855,709.73
	Total Federally Funded salaries subject to PSERS withholding	2,729,512.33

Title I Expenditure Data

Amount	Description	Amount
	Expenditures Funded with Current Title I Funds	1,013,304.31
	Expenditures Funded with Carry over Title I Funds	14,964.44
Total	Title I Expenditure Data	\$1,028,268.75

Title IV Revenue Data

Amount	Description	Amount
	Revenue from Title IV-A-1: Student Support and Academic Enrichment Grants	60,220.00

LEA : 114065503 Muhlenberg SD

1 .	<u>Current Special Education Expenditures within Function 1000</u> See list of exclusions in the note below.	9,746,299.64
2 .	<u>Current Special Education Expenditures within Function 2000</u> See list of exclusions in the note below.	1,340,219.36
2A.	<u>Current Special Education Expenditures within Sub-Function 2100</u> This data should also be included in line 2 above. See list of exclusions in the note below.	137,947.32
2B.	<u>Current Special Education Expenditures within Sub-Function 2200</u> This data should also be included in line 2 above. See list of exclusions in the note below.	869,390.66
2C.	<u>Current Special Education Expenditures within Sub-Function 2700</u> This data should also be included in line 2 above. See list of exclusions in the note below.	
3.	<u>Current Special Education Expenditures within Sub-Function 3100</u> See list of exclusions in the note below.	
4.	<u>Current Special Education Expenditures within Sub-Function 3200</u> See list of exclusions in the note below.	

Note: The Current Special Education Expenditure amounts for each line should be calculated as follows:

- * Include the total expenditures for special education costs from all governmental funds and the food service fund 51 for the function/sub-function requested
- * Exclude data from sub-functions: 1243,1450,1500,1600,1807,2280,2450,2750,2990
- * Exclude data from objects: 322,511,512,516,561,562,564,566,592,593,594,595,596,597,700,830,899

Benefits for Staff Relative to Collective Bargaining Agreements

	OBJECT	COVERED	NOT COVERED	TOTAL
10 General Fund				
	211 Medical Insurance			
	212 Dental Insurance			
	215 Eye Care Insurance	17,924.47	2,453.87	20,378.34
	216 Prescription Insurance			
	271 Self-Insurance Medical Benefits	5,652,581.28	850,072.67	6,502,653.95
	272 Self-Insurance Dental Benefits	177,688.90	19,901.47	197,590.37
	275 Self-Insurance Eye Care Benefits			
	276 Self-Insurance Prescription Benefits			
	FUND TOTAL	\$5,848,194.65	\$872,428.01	\$6,720,622.66
50 Enterprise Fund				
	211 Medical Insurance			
	212 Dental Insurance			
	215 Eye Care Insurance	72.12	244.32	316.44
	216 Prescription Insurance			
	271 Self-Insurance Medical Benefits	26,246.30	76,929.90	103,176.20
	272 Self-Insurance Dental Benefits	900.00	3,156.00	4,056.00
	275 Self-Insurance Eye Care Benefits			
	276 Self-Insurance Prescription Benefits			
	FUND TOTAL	\$27,218.42	\$80,330.22	\$107,548.64
60 Internal Service Fund	No Self Insurance data to report			
	211 Medical Insurance			
	212 Dental Insurance			
	215 Eye Care Insurance			
	216 Prescription Insurance			
	271 Self-Insurance Medical Benefits			
	272 Self-Insurance Dental Benefits			
	275 Self-Insurance Eye Care Benefits			
	276 Self-Insurance Prescription Benefits			
	FUND TOTAL			
Total of All Funds		\$5,875,413.07	\$952,758.23	\$6,828,171.30

LEA : 114065503 Muhlenberg SD

Printed 11/26/2024 3:37:27 PM

Function	Special Education (Prior Year)	Nonspecial Education (Prior Year)	Total (Prior Year)	Special Education (Current Year)	Nonspecial Education (Current Year)	Total (Current Year)
2120 Guidance Services	397,148.01	1,518,798.47	1,915,946.48	436,916.87	1,725,821.65	2,162,738.52
2140 Psychological Services	112,541.60	328,197.97	440,739.57	239,960.07	402,950.34	642,910.41
2150 Speech Pathology and Audiology Services						
2160 Social Work Services	97,684.89	373,572.70	471,257.59	105,492.34	416,694.76	522,187.10
2260 Instruction and Curriculum Development Services	672,587.12	143,714.59	816,301.71	779,933.63	249,167.54	1,029,101.17
2350 Legal and Accounting Services	122,103.98	226,829.19	348,933.17	75,992.82	267,446.96	343,439.78
2420 Medical Services	209,354.01		209,354.01	255,313.56		255,313.56
2440 Nursing Services	172,352.09	659,119.74	831,471.83	172,297.66	680,575.76	852,873.42
2700 Student Transportation Services	764,116.10	1,653,421.78	2,417,537.88	900,097.02	1,595,943.50	2,496,040.52
Total	\$2,547,887.80	\$4,903,654.44	\$7,451,542.24	\$2,966,003.97	\$5,338,600.51	\$8,304,604.48

LEA : 114065503 Muhlenberg SD

	(PRINCIPAL AMOUNTS ONLY)							
<u>GOVERNMENTAL FUNDS/ ACTIVITIES</u>	Short-Term Borrowing	General Obligation Bonds/Notes	Authority Building Obligations	Leases, Other Right to Use Arrangements	Extended Term Financing Agreements	Other Long Term Debt/Liabilities	OPEB, Comp Abs, Net Pension Liab	Total
1. Debt at Beginning of Fiscal Year		15,575,000.00		341,437.00			93,416,320.00	109,332,757.00
2. Additional Debt Incurred During Year		14,800,000.00		820,241.00			9,545,611.00	25,165,852.00
3. Retirements and Repayments		5,220,000.00		262,252.00			10,688,945.00	16,171,197.00
4. Debt at End of Fiscal Year		25,155,000.00		899,426.00			92,272,986.00	118,327,412.00
5. Accreted Interest at End Of Fiscal Year								
6. Total Debt and Accreted Interest		25,155,000.00		899,426.00			92,272,986.00	118,327,412.00
7. Current Portion P&I - Due within 1 year		6,434,550.00		318,935.00				6,753,485.00
8. Interest Paid during current fiscal year		822,855.00		38,845.00				861,700.00

(PRINCIPAL AMOUNTS ONLY)								
<u>PROPRIETARY FUNDS</u>	Short-Term Borrowing	General Obligation Bonds/Notes	Authority Building Obligations	Leases, Other Right to Use Arrangements	Extended Term Financing Agreements	Other Long Term Debt/Liabilities	OPEB, Comp Abs, Net Pension Liab	Total
1. Debt at Beginning of Fiscal Year							2,718,102.00	2,718,102.00
2. Additional Debt Incurred During Year							616,585.00	616,585.00
3. Retirements and Repayments							351,614.00	351,614.00
4. Debt at End of Fiscal Year							2,983,073.00	2,983,073.00
5. Accreted Interest at End Of Fiscal Year								
6. Total Debt and Accreted Interest							2,983,073.00	2,983,073.00
7. Current Portion P&I - Due within 1 year								
8. Interest Paid during current fiscal year								

LEA : 114065503 Muhlenberg SD

Total Principal and Interest Payments Made by Your School - All Funds

Function	Fund		Principal (910)	Principal (920)	Interest (830)	Total (Principal +Interest)	Misc Other Uses (990)
5110	10	General Fund					
5110	20	Special Revenue Funds					
5110	30	Capital Projects Funds					
5110	40	Debt Service Fund	5,220,000.00		822,855.00	6,042,855.00	
5110	90	Permanent Fund					
5120	10	General Fund					
5120	20	Special Revenue Funds					
5120	30	Capital Projects Funds					
5120	40	Debt Service Fund					
5140	10	General Fund	262,251.52		38,844.90	301,096.42	
5140	20	Special Revenue Funds					
5140	30	Capital Projects Funds					
5140	40	Debt Service Fund					
5140	90	Permanent Fund					
Total Debt Payments - Governmental Funds			\$5,482,251.52		\$861,699.90	\$6,343,951.42	

Function	Fund		Principal (910)	Principal (920)	Interest (830)	Total (Principal +Interest)
5110	50	Enterprise Fund				
5110	60	Internal Service Fund				
5120	50	Enterprise Fund				
5120	60	Internal Service Fund				
5140	50	Enterprise Fund				
5140	60	Internal Service Fund				
Total Debt Payments - Proprietary Funds						

LEA : 114065503 Muhlenberg SD

<u>Debt Details</u> <u>Governmental Funds/ Activities</u>		Principal Amounts Only				Current Portion Due Within One Year (Principal and Interest)	Interest Paid During Fiscal Year
Debt Category	Debt Issue Date (MM/YYYY)	Debt at Beginning of Fiscal Year	Additions	Reductions / Repayments	Debt at End of Fiscal Year		
General Obligation Bonds/Notes – CIB	11/2023		14,800,000.00	5,000.00	14,795,000.00	732,025.00	335,355.00
General Obligation Bonds/Notes – CIB	07/2020	4,850,000.00		2,765,000.00	2,085,000.00	151,525.00	143,000.00
General Obligation Bonds/Notes – CIB	06/2019	10,725,000.00		2,450,000.00	8,275,000.00	5,551,000.00	344,500.00
Leases and Other Right to Use Arrangements		341,437.00	820,241.00	262,252.00	899,426.00	318,935.00	38,845.00
Compensated Absences		348,462.00	381,727.00	346,280.00	383,909.00		
Net Pension Liability		85,293,565.00	8,509,427.00	9,960,410.00	83,842,582.00		
Other Post-Employment Benefits (OPEB)		7,774,293.00	654,457.00	382,255.00	8,046,495.00		
Totals for Debt Entered:		\$109,332,757.00	\$25,165,852.00	\$16,171,197.00	\$118,327,412.00	\$6,753,485.00	\$861,700.00

<u>Bond Details</u> <u>Proprietary Funds</u>		Principal Amounts Only				Current Portion Due Within One Year (Principal and Interest)	Interest Paid During Fiscal Year
Debt Category	Debt Issue Date (MM/YYYY)	Debt at Beginning of Fiscal Year	Additions	Reductions / Repayments	Debt at End of Fiscal Year		
Compensated Absences		14,481.00	11,227.00	9,942.00	15,766.00		
Net Pension Liability		2,556,435.00	594,346.00	334,363.00	2,816,418.00		
Other Post-Employment Benefits (OPEB)		147,186.00	11,012.00	7,309.00	150,889.00		
Totals for Debt Entered:		\$2,718,102.00	\$616,585.00	\$351,614.00	\$2,983,073.00		

LEA : 114065503 Muhlenberg SD

General Fund (10)

Section 1: Tuition/Purchased Services as Reported within Expenditure Detail	Amount
Tuition Reported in General Fund Expenditures 1000-560	5,419,213.22
Purchased Services in General Fund Expenditures 1000-594 and 1000-597	
Section 1 Total	\$5,419,213.22

Section 2: Tuition Paid to Institution Types During Fiscal Year	Tuition Paid For Nonspecial Education	Tuition Paid For Special Education	Total
1 1306 Institutions			
2 Institutionalized Children's Programs			
3 Juveniles Incarcerated in Adult Facilities			
4 Residential Treatment Facilities			
5 Other Local Education Agencies		51,002.69	51,002.69
6 Brick and Mortar Charter Schools			
7 Cyber Charter Schools	624,178.48	778,336.37	1,402,514.85
8 Career and Technology Centers	2,572,417.69		2,572,417.69
9 Approved Private Schools		94,546.91	94,546.91
10 PA Chartered Schools for the Deaf and Blind		99,085.25	99,085.25
11 Private Residential Rehabilitative Institutions	108,230.30	4,294.44	112,524.74
12 Juvenile Detention Centers	2,088.26	29,394.45	31,482.71
13 Special Program Jointures			
14 Other Tuition Not Included Elsewhere In This Section	786.39	1,054,851.99	1,055,638.38
Section 2 Total	\$3,307,701.12	\$2,111,512.10	\$5,419,213.22

LEA : 114065503 Muhlenberg SD

Printed 11/26/2024 3:37:46 PM

Food Service / Cafeteria Operations Fund (51)

3000 Operation of Non-Instructional Services

Total

100	<u>Personnel Services – Salaries</u>	
100	Personnel Services – Salaries	1,108,236.94
Total Personnel Services – Salaries		\$1,108,236.94
200	<u>Personnel Services – Employee Benefits</u>	
210	Group Insurance – Contracted Provider	109,131.58
220	Social Security Contributions	83,860.39
230	PSERS Retirement Contributions	338,848.79
250	Unemployment Compensation	1,756.19
260	Workers' Compensation	16,962.80
280	Other Post-Employment Benefits (OPEB)	5,473.00
291	Other Retirement Plans	780.00
Total Personnel Services – Employee Benefits		\$556,812.75
300	<u>Purchased Professional and Technical Services</u>	
330	Other Professional Services	5,140.45
Total Purchased Professional and Technical Services		\$5,140.45
400	<u>Purchased Property Services</u>	
420	Utility Services	2,750.00
430	Repairs and Maintenance Services	59,507.33
Total Purchased Property Services		\$62,257.33
500	<u>Other Purchased Services</u>	
530	Communications	225.94
591	Services Purchased Locally	10,021.50
Total Other Purchased Services		\$10,247.44
600	<u>Supplies</u>	
610	General Supplies	89,570.51
630	Food	1,483,181.29
650	Supplies & Fees – Technology Related	9,795.00
Total Supplies		\$1,582,546.80
700	<u>Property</u>	
740	Depreciation	14,228.75
Total Property		\$14,228.75
800	<u>Other Objects</u>	
810	Dues and Fees	1,321.00
890	Miscellaneous Expenditures	4,089.75
Total Other Objects		\$5,410.75
Total 3000 Operation of Non-Instructional Services		\$3,344,881.21

LEA : 114065503 Muhlenberg SD

Printed 11/26/2024 3:37:46 PM

Food Service / Cafeteria Operations Fund (51)

3100 Food Services	Elementary	Secondary	Federal	Total
100 <u>Personnel Services – Salaries</u>				
100 Personnel Services – Salaries			926,722.54	1,108,236.94
Total Personnel Services – Salaries			\$926,722.54	\$1,108,236.94
200 <u>Personnel Services – Employee Benefits</u>				
210 Group Insurance – Contracted Provider			91,257.29	109,131.58
220 Social Security Contributions			70,125.18	83,860.39
230 PSERS Retirement Contributions			283,349.89	338,848.79
250 Unemployment Compensation			1,468.55	1,756.19
260 Workers' Compensation			14,184.52	16,962.80
280 Other Post-Employment Benefits (OPEB)			4,576.60	5,473.00
291 Other Retirement Plans			652.25	780.00
Total Personnel Services – Employee Benefits			\$465,614.28	\$556,812.75
300 <u>Purchased Professional and Technical Services</u>				
330 Other Professional Services			4,298.51	5,140.45
Total Purchased Professional and Technical Services			\$4,298.51	\$5,140.45
400 <u>Purchased Property Services</u>				
420 Utility Services			2,299.59	2,750.00
430 Repairs and Maintenance Services			49,760.82	59,507.33
Total Purchased Property Services			\$52,060.41	\$62,257.33
500 <u>Other Purchased Services</u>				
530 Communications			188.93	225.94
591 Services Purchased Locally			8,380.11	10,021.50
Total Other Purchased Services			\$8,569.04	\$10,247.44
600 <u>Supplies</u>				
610 General Supplies			74,900.06	89,570.51
630 Food			1,240,256.01	1,483,181.29
650 Supplies & Fees – Technology Related			8,190.71	9,795.00
Total Supplies			\$1,323,346.78	\$1,582,546.80
700 <u>Property</u>				
740 Depreciation			11,898.27	14,228.75
Total Property			\$11,898.27	\$14,228.75
800 <u>Other Objects</u>				
810 Dues and Fees			1,104.64	1,321.00
890 Miscellaneous Expenditures			3,419.90	4,089.75
Total Other Objects			\$4,524.54	\$5,410.75
Total 3100 Food Services			\$2,797,034.37	\$3,344,881.21

	<u>Food Service(51)</u>	<u>Child Care Operations(52)</u>	<u>Other Enterprise(58)</u>	<u>Internal Service(60)</u>	<u>Total</u>
3000 <u>Operation of Non-Instructional Services</u>					
3100 Food Services	3,344,881.21				3,344,881.21
Total Operation of Non-Instructional Services	\$3,344,881.21				\$3,344,881.21
TOTAL ACTUAL EXPENDITURES & OTHER FINANCING USES	\$3,344,881.21				\$3,344,881.21

LEA : 114065503 Muhlenberg SD

Printed 11/26/2024 3:38:00 PM

Fund	School	School Number	Local Personnel	Local Nonpersonnel	State Personnel	State Nonpersonnel	Federal Personnel	Federal Nonpersonnel	Total	Explanation
10										
	C E Cole Intermediate Sch	8006	5,703,108.97	1,061,347.33	4,796,416.10	856,714.70	1,012,070.28	450,186.63	13,879,844.01	
	Muhlenberg El Ctr	4919	6,486,905.11	1,272,386.16	7,041,555.11	1,081,208.38	824,473.69	569,063.80	17,275,592.25	
	Muhlenberg HS	6610	8,375,145.41	1,513,463.43	4,840,465.82	789,820.59	761,466.45	192,335.85	16,472,697.55	
	Muhlenberg Jr MS	827	7,524,530.53	1,524,237.54	5,036,253.69	875,731.01	522,084.88	181,919.45	15,664,757.10	
Total			28,089,690.02	5,371,434.46	21,714,690.72	3,603,474.68	3,120,095.30	1,393,505.73	63,292,890.91	