

LEA Name : Muhlenberg SD
Address : 801 Bellevue Avenue
Reading , PA 19605

County : Berks
AUN Number : 114065503
LEA Type : SD

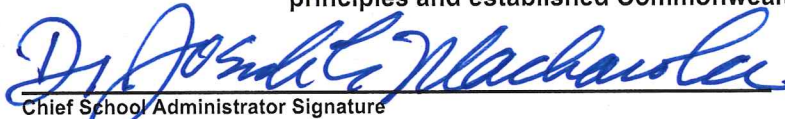
**Annual Financial Report
Accuracy Certification Statement**

For Fiscal Year Ending
6/30/2022

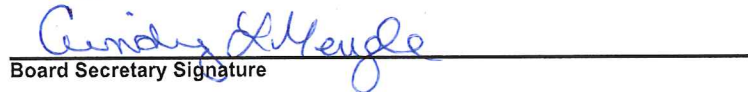
Pennsylvania Department of Education
&
Office of Comptroller Operations

PDE-2056: Intermediate Unit
PDE-2057: School District, AVTS/CTC, Charter School,
and Special Program Jointure

CERTIFICATION: By signing this page I agree that the electronic data submitted is a complete and accurate statement of the financial operations and status of the local education agency for the fiscal year. It has been prepared in accordance with generally accepted accounting principles and established Commonwealth of PA reporting guidelines.


Chief School Administrator Signature

12/5/2022
Date


Board Secretary Signature

12/5/2022
Date

Shane Mathias
Contact Person

(610)921-8000 Ext :1275
Contact Person Telephone Number

mathiass@muhlsdk12.org
Contact Person E-mail Address

Contact Person Fax Number

Audit Certification
Annual Financial Report:
For Fiscal Year Ending **6/30/2022**
(Pursuant to PA School Code Section 218(b))

LEA Name : Muhlenberg SD
AUN Number : 114065503
County : Berks

Audit Certification Due: 12/31/2022

This certification is applicable to the Annual Financial Report data submitted through the Consolidated Financial Reporting System (CFRS).

CERTIFICATION: By signing this page I agree that the financial statements of the school have been properly audited as noted above pursuant to Article XXIV, and in the auditor's professional opinion, the Annual Financial Report (PDE-2057) submitted through CFRS is materially consistent with the audited financial statements.

Chief School Administrator


Signature

12/5/22
Date

Board Secretary


Signature

12/5/22
Date

Shane Mathias

Contact Person

mathiass@muhlsdk12.org

Contact Person E-mail Address

(610)921-8000

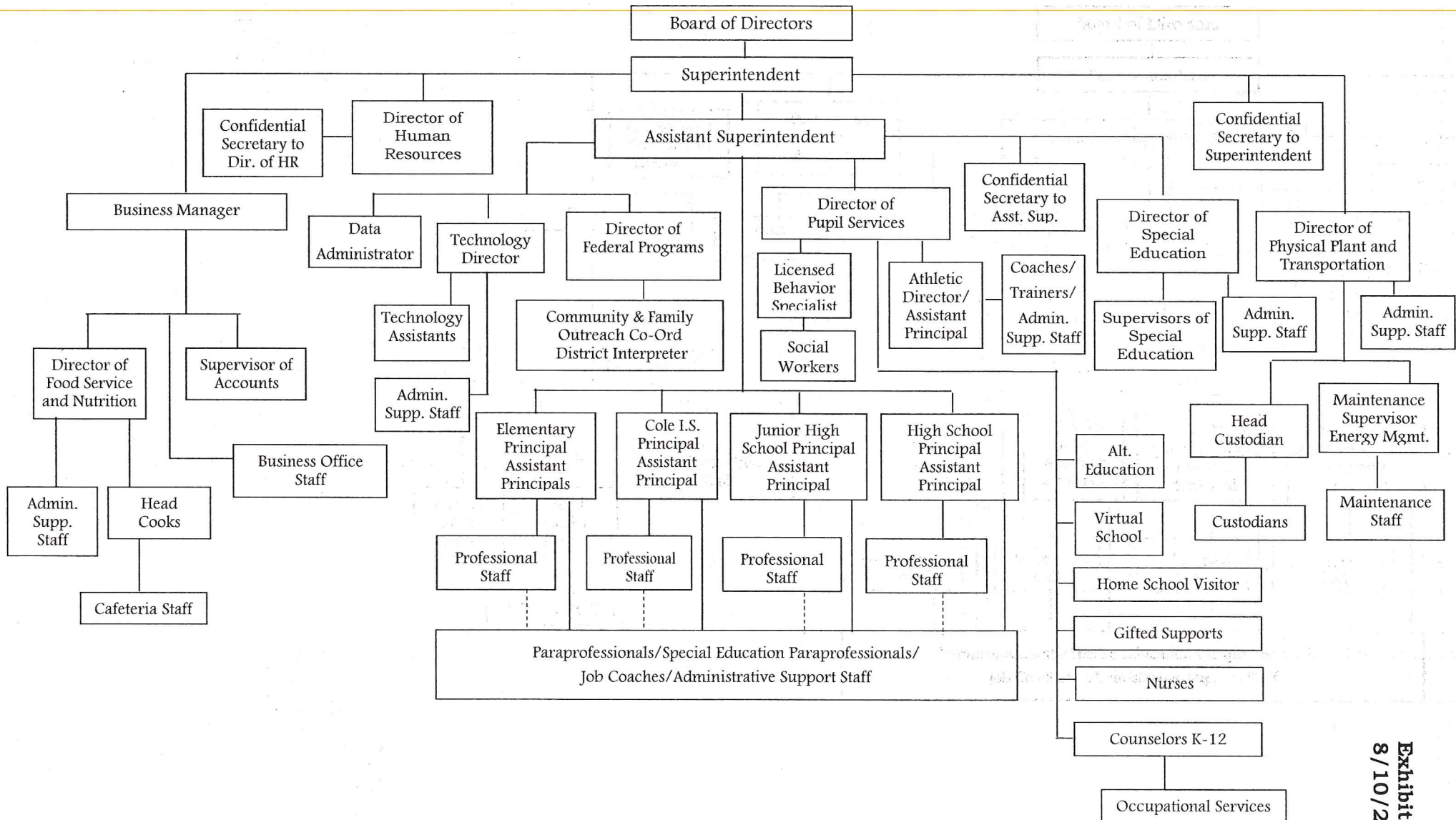
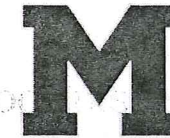
Ext :1275

Contact Person Telephone Number

Contact Person Fax Number



MUHLENBERG SCHOOL DISTRICT





Book	Policy Manual
Section	600 Finances
Title	Capital Assets
Code	622
Status	Active
Legal	1. 24 P.S. 218 2. 24 P.S. 613 Governmental Accounting Standards Board, Statement No. 34
Adopted	May 11, 2011

Purpose

The Muhlenberg School District policy follows the requirements set forth by the Governmental Accounting Standard Board (GASB) Statement No. 34 as it pertains to Capital Asset Reporting.

Definition

The policy applies to Muhlenberg School District's acquisition and depreciation of capital assets. **Capital assets** include land, improvements to land, easements, buildings and additions, building improvements, furniture, fixtures and equipment, equipment under lease, vehicles, works of art and historical treasures, construction in progress and infrastructure. Capital assets are tangible assets used in operations and have initial useful lives extending beyond a single reporting period. Equipment will not change its original shape, appearance or character with use and it can be expected to last more than one (1) year with reasonable care and maintenance.

Authority

Participation of the school entity in any such activity shall be in accordance with Board policy.[1][2]

Delegation of Responsibility

The Board delegates to the Supervisor of Accounts the responsibility to coordinate the compilation and preparation of all information necessary to implement this policy. The Supervisor of Accounts shall be responsible for implementation of the necessary procedures to establish and maintain a capital asset inventory, including depreciation schedules.

The Business Manager shall prepare the required Management's Discussion and Analysis (MD&A). The MD&A shall be in the form required by GASB Statement Number 34 and shall be submitted to the Board for approval prior to publication. Prior to submission of the MD&A for Board approval, the school entity's independent auditors shall review the MD&A, in accordance with SAS Number 52, "Required Supplementary Information".

<u>Val Number</u>	<u>Description</u>	<u>Justification</u>
30685	Revenue Detail: Current Tax Revenue amount cannot exceed 50% variance from prior year amount. Correct the data or enter a justification. 6153, Current AFR Rev Detail: \$1,479,142.25 6153, Prior AFR Rev Detail: \$701,728.21	Very strong and active real estate market. Fiscal year included the sale of (3) properties that are in the top 10 of total taxable assessments. These (3) properties generated a significant amount of tax revenue.
41162	Expenditure Detail, Salaries (Object 100) and Benefits (Object 200 series): Amounts must be entered for both Salaries and Benefits. Please verify following fund and function codes: Fund 10 Function 1500;	Local non-public (HGA) utilized a District employee for translation services. The wages for the time spent providing the service were allocated to the non-pub portion of a Title grant. No benefits were allocated.
50430	SESS - 2160 Social Work Services: SESS Schedule amounts for Special Education vary from prior year by 40% or more. Correct the data or enter a justification. SESS Schedule 2160: \$14,031.41 Prior Year SESS Schedule 2160: \$0.00	With the surge in mental health concerns, the District hired a social worker during the 2021-22 school year.
50450	SESS - 2350 Legal and Accounting Services: SESS Schedule amounts for Special Education vary from prior year by 40% or more. Correct the data or enter a justification. SESS Schedule 2350: \$46,373.93 Prior Year SESS Schedule 2350: \$126,903.30	Data is correct. Perhaps due to COVID, special education legal activity, and in turn, expenditures, were down in 2021-22.

LEA : 114065503 Muhlenberg SD

Printed 1/3/2023 11:55:25 AM

Amounts Expressed in Whole Dollars		<u>General Fund</u> <u>(10)</u>	<u>Student Sponsored</u> <u>Activity Fund</u> <u>(21)</u>	<u>Public Purpose Trust</u> <u>(27)</u>	<u>Other Compt Approved</u> <u>(28)</u>	<u>Athletic / Activity</u> <u>(29)</u>
Assets And Deferred Outflows Of Resources						
Assets						
0100	Cash and Cash Equivalents	18,807,648	497,416			45,797
0110	Investments					
0120	Taxes Receivable	823,612				
0130	Due From Other Funds		1,702			
0141	Due From Other Governments					
0142	State Revenue Receivable	2,645,104				
0143	Federal Revenue Receivable	2,184,419				
0145	Other Intergovernmental Revenue Receivable					
0146	Due from Primary Government					
0147	Due from Component Unit					
0150	Other Receivables	9,893				
0170	Inventories					
0180	Prepaid Expenses (Expenditures)	25,464				
0190	Other Current Assets					
Total Assets		\$24,496,140	\$499,118			\$45,797
0910	Deferred Outflows of Resources					
Total Assets And Deferred Outflows Of Resources		\$24,496,140	\$499,118			\$45,797

LEA : 114065503 Muhlenberg SD

Printed 1/3/2023 11:55:25 AM

Amounts Expressed in Whole Dollars		<u>Capital Reserve (690.</u> <u>1850)</u> <u>(31)</u>	<u>Capital Reserve (1431)</u> <u>(32)</u>	<u>Other Capital Projects</u> <u>Fund</u> <u>(39)</u>	<u>Debt Service</u> <u>(40)</u>	<u>Permanent</u> <u>(90)</u>
Assets And Deferred Outflows Of Resources						
Assets						
0100	Cash and Cash Equivalents		2,692,282	18,100		
0110	Investments					
0120	Taxes Receivable					
0130	Due From Other Funds					
0141	Due From Other Governments					
0142	State Revenue Receivable					
0143	Federal Revenue Receivable					
0145	Other Intergovernmental Revenue Receivable					
0146	Due from Primary Government					
0147	Due from Component Unit					
0150	Other Receivables					
0170	Inventories					
0180	Prepaid Expenses (Expenditures)					
0190	Other Current Assets					
Total Assets			\$2,692,282	\$18,100		
0910	Deferred Outflows of Resources					
Total Assets And Deferred Outflows Of Resources			\$2,692,282	\$18,100		

LEA : 114065503 Muhlenberg SD

Printed 1/3/2023 11:55:25 AM

Amounts Expressed in Whole Dollars		<u>Total Governmental</u>
		<u>Funds</u>
Assets And Deferred Outflows Of Resources		
Assets		
0100	Cash and Cash Equivalents	22,061,243
0110	Investments	
0120	Taxes Receivable	823,612
0130	Due From Other Funds	1,702
0141	Due From Other Governments	
0142	State Revenue Receivable	2,645,104
0143	Federal Revenue Receivable	2,184,419
0145	Other Intergovernmental Revenue Receivable	
0146	Due from Primary Government	
0147	Due from Component Unit	
0150	Other Receivables	9,893
0170	Inventories	
0180	Prepaid Expenses (Expenditures)	25,464
0190	Other Current Assets	
Total Assets		\$27,751,437
0910	Deferred Outflows of Resources	
Total Assets And Deferred Outflows Of Resources		\$27,751,437

LEA : 114065503 Muhlenberg SD

Printed 1/3/2023 11:55:25 AM

Amounts Expressed in Whole Dollars		<u>General Fund</u> <u>(10)</u>	<u>Student Sponsored</u> <u>Activity Fund</u> <u>(21)</u>	<u>Public Purpose Trust</u> <u>(27)</u>	<u>Other Compt Approved</u> <u>(28)</u>	<u>Athletic / Activity</u> <u>(29)</u>
Liabilities And Deferred Inflows Of Resources And Fund Balances						
Liabilities						
0400	Due to Other Funds	104,967				
0411	Due to Other Governments					
0412	Due to Primary Government					
0413	Due to Component Unit					
0420	Accounts Payable	1,187,990	14,915			
0430	Contracts Payable					
0440	Current Portion of Long-Term Debt					
0450	Short-Term Payables					
0461	Accrued Salaries and Benefits	6,423,974				
0462	Payroll Deductions and Withholding					
0480	Unearned Revenues	65,645				
0490	Other Current Liabilities	60,008				
Total Liabilities		\$7,842,584	\$14,915			
0950	Deferred Inflows of Resources	565,597				
Fund Balances						
0810	Nonspendable Fund Balance	25,464				
0820	Restricted Fund Balance		484,203			45,797
0830	Committed Fund Balance					
0840	Assigned Fund Balance	10,356,809				
0850	Unassigned Fund Balance	5,705,686				
Total Fund Balances		\$16,087,959	\$484,203			\$45,797
Total Liabilities, Deferred Inflows Of Resources And Fund Balances		\$24,496,140	\$499,118			\$45,797

LEA : 114065503 Muhlenberg SD

Printed 1/3/2023 11:55:25 AM

Amounts Expressed in Whole Dollars		<u>Capital Reserve (690.</u> <u>1850)</u> <u>(31)</u>	<u>Capital Reserve (1431)</u> <u>(32)</u>	<u>Other Capital Projects</u> <u>Fund</u> <u>(39)</u>	<u>Debt Service</u> <u>(40)</u>	<u>Permanent</u> <u>(90)</u>
Liabilities And Deferred Inflows Of Resources And Fund Balances						
Liabilities						
0400	Due to Other Funds					
0411	Due to Other Governments					
0412	Due to Primary Government					
0413	Due to Component Unit					
0420	Accounts Payable		199,037	18,100		
0430	Contracts Payable					
0440	Current Portion of Long-Term Debt					
0450	Short-Term Payables					
0461	Accrued Salaries and Benefits					
0462	Payroll Deductions and Withholding					
0480	Unearned Revenues					
0490	Other Current Liabilities					
Total Liabilities			\$199,037	\$18,100		
0950	Deferred Inflows of Resources					
Fund Balances						
0810	Nonspendable Fund Balance					
0820	Restricted Fund Balance		2,493,245			
0830	Committed Fund Balance					
0840	Assigned Fund Balance					
0850	Unassigned Fund Balance					
Total Fund Balances			\$2,493,245			
Total Liabilities, Deferred Inflows Of Resources And Fund Balances			\$2,692,282	\$18,100		

LEA : 114065503 Muhlenberg SD

Printed 1/3/2023 11:55:25 AM

Amounts Expressed in Whole Dollars		<u>Total Governmental Funds</u>
Liabilities And Deferred Inflows Of Resources And Fund Balances		
Liabilities		
0400 Due to Other Funds		104,967
0411 Due to Other Governments		
0412 Due to Primary Government		
0413 Due to Component Unit		
0420 Accounts Payable		1,420,042
0430 Contracts Payable		
0440 Current Portion of Long-Term Debt		
0450 Short-Term Payables		
0461 Accrued Salaries and Benefits		6,423,974
0462 Payroll Deductions and Withholding		
0480 Unearned Revenues		65,645
0490 Other Current Liabilities		60,008
Total Liabilities		\$8,074,636
0950 Deferred Inflows of Resources		565,597
Fund Balances		
0810 Nonspendable Fund Balance		25,464
0820 Restricted Fund Balance		3,023,245
0830 Committed Fund Balance		
0840 Assigned Fund Balance		10,356,809
0850 Unassigned Fund Balance		5,705,686
Total Fund Balances		\$19,111,204
Total Liabilities, Deferred Inflows Of Resources And Fund Balances		\$27,751,437

Amounts Expressed in Whole Dollars		<u>General Fund</u> <u>(10)</u>	<u>Student Sponsored</u> <u>Activity Fund</u> <u>(21)</u>	<u>Public Purpose Trust</u> <u>(27)</u>	<u>Other Compt Approved</u> <u>(28)</u>	<u>Athletic / Activity</u> <u>(29)</u>
Revenues						
6000	Revenue from Local Sources	45,293,599	194,491			64,068
7000	Revenue from State Sources	20,528,094				
8000	Revenue from Federal Sources	5,545,915				
Total Revenues		\$71,367,608	\$194,491			\$64,068
Expenditures						
1000	Instruction	40,435,582				
2000	Support Services	19,415,750				
3000	Operation of Non-Instructional Services	1,757,738	193,070			60,074
4000	Facilities Acquisition, Construction and Improvement Services					
5110	Debt Service					
5130	Refund of Prior Year Revenues / Receipts	53,161				
5140	Leases					
Total Expenditures		\$61,662,231	\$193,070			\$60,074
Excess (Deficiency) Of Revenues Over Expenditures		\$9,705,377	\$1,421			\$3,994
Other Financing Sources (Uses)						
9110	Face Value of Bonds Issued					
9120	Proceeds from Refunding of Bonds					
9130	Bond Premiums					
9200	Proceeds from Extended-Term Financing and Leases					
9300	Interfund Transfers - IN	60,477				
9400	Sale of or Compensation for Loss of Fixed Assets					
9710	Transfers from Component Units					
9720	Transfers from Primary Governments					
9910	Other Financing Sources Not Listed in the 9000 Series					
9990	Insurance Recoveries					
5120	Debt Service – Refunded Bonds					
5150	Bond Discounts					
5200	Interfund Transfers – Out	5,703,900				
5300	Transfers Out to Component Units/Primary Governments					
Total Other Financing Sources (Uses)		(\$5,643,423)				

Amounts Expressed in Whole Dollars		<u>Capital Reserve (690.1850)</u> <u>(31)</u>	<u>Capital Reserve (1431)</u> <u>(32)</u>	<u>Other Capital Projects</u> <u>Fund</u> <u>(39)</u>	<u>Debt Service</u> <u>(40)</u>	<u>Permanent</u> <u>(90)</u>
Revenues						
6000	Revenue from Local Sources		3,331	19		
7000	Revenue from State Sources					
8000	Revenue from Federal Sources					
Total Revenues			\$3,331	\$19		
Expenditures						
1000	Instruction					
2000	Support Services		39,102			
3000	Operation of Non-Instructional Services		58,375			
4000	Facilities Acquisition, Construction and Improvement Services		882,121	21,438		
5110	Debt Service				5,703,900	
5130	Refund of Prior Year Revenues / Receipts					
5140	Leases					
Total Expenditures			\$979,598	\$21,438	\$5,703,900	
Excess (Deficiency) Of Revenues Over Expenditures			(\$976,267)	(\$21,419)	(\$5,703,900)	
Other Financing Sources (Uses)						
9110	Face Value of Bonds Issued					
9120	Proceeds from Refunding of Bonds					
9130	Bond Premiums					
9200	Proceeds from Extended-Term Financing and Leases					
9300	Interfund Transfers - IN				5,703,900	
9400	Sale of or Compensation for Loss of Fixed Assets					
9710	Transfers from Component Units					
9720	Transfers from Primary Governments					
9910	Other Financing Sources Not Listed in the 9000 Series					
9990	Insurance Recoveries					
5120	Debt Service – Refunded Bonds					
5150	Bond Discounts					
5200	Interfund Transfers – Out					
5300	Transfers Out to Component Units/Primary Governments					
Total Other Financing Sources (Uses)					\$5,703,900	

Amounts Expressed in Whole Dollars		<u>Total Governmental Funds</u>
Revenues		
6000	Revenue from Local Sources	45,555,508
7000	Revenue from State Sources	20,528,094
8000	Revenue from Federal Sources	5,545,915
Total Revenues		\$71,629,517
Expenditures		
1000	Instruction	40,435,582
2000	Support Services	19,454,852
3000	Operation of Non-Instructional Services	2,069,257
4000	Facilities Acquisition, Construction and Improvement Services	903,559
5110	Debt Service	5,703,900
5130	Refund of Prior Year Revenues / Receipts	53,161
5140	Leases	
Total Expenditures		\$68,620,311
Excess (Deficiency) Of Revenues Over Expenditures		\$3,009,206
Other Financing Sources (Uses)		
9110	Face Value of Bonds Issued	
9120	Proceeds from Refunding of Bonds	
9130	Bond Premiums	
9200	Proceeds from Extended-Term Financing and Leases	
9300	Interfund Transfers - IN	5,764,377
9400	Sale of or Compensation for Loss of Fixed Assets	
9710	Transfers from Component Units	
9720	Transfers from Primary Governments	
9910	Other Financing Sources Not Listed in the 9000 Series	
9990	Insurance Recoveries	
5120	Debt Service – Refunded Bonds	
5150	Bond Discounts	
5200	Interfund Transfers – Out	5,703,900
5300	Transfers Out to Component Units/Primary Governments	
Total Other Financing Sources (Uses)		\$60,477

Amounts Expressed in Whole Dollars		<u>General Fund</u> <u>(10)</u>	<u>Student Sponsored</u> <u>Activity Fund</u> <u>(21)</u>	<u>Public Purpose Trust</u> <u>(27)</u>	<u>Other Compt Approved</u> <u>(28)</u>	<u>Athletic / Activity</u> <u>(29)</u>
Special And Extraordinary Items						
9920 Special Items – Gains						
9930 Extraordinary Items – Gains						
5520 Special Items – Losses						
5530 Extraordinary Items – Losses						
Net Change In Fund Balances		\$4,061,954	\$1,421			\$3,994
Fund Balance						
0001 Fund Balance - Beginning of Fiscal Year		12,026,005	482,782			41,803
Fund Balance - End Of Year		\$16,087,959	\$484,203			\$45,797

Amounts Expressed in Whole Dollars		<u>Capital Reserve (690.</u> <u>1850)</u> <u>(31)</u>	<u>Capital Reserve (1431)</u> <u>(32)</u>	<u>Other Capital Projects</u> <u>Fund</u> <u>(39)</u>	<u>Debt Service</u> <u>(40)</u>	<u>Permanent</u> <u>(90)</u>
Special And Extraordinary Items						
9920	Special Items – Gains					
9930	Extraordinary Items – Gains					
5520	Special Items – Losses					
5530	Extraordinary Items – Losses					
Net Change In Fund Balances			(\$976,267)	(\$21,419)		
Fund Balance						
0001	Fund Balance - Beginning of Fiscal Year		3,469,511	21,420		
Fund Balance - End Of Year			\$2,493,244	\$1		

Amounts Expressed in Whole Dollars		<u>Total Governmental Funds</u>
Special And Extraordinary Items		
9920	Special Items – Gains	
9930	Extraordinary Items – Gains	
5520	Special Items – Losses	
5530	Extraordinary Items – Losses	
Net Change In Fund Balances		\$3,069,683
Fund Balance		
0001	Fund Balance - Beginning of Fiscal Year	16,041,521
Fund Balance - End Of Year		\$19,111,204

LEA : 114065503 Muhlenberg SD

Printed 1/3/2023 11:55:35 AM

Amounts Expressed in Whole Dollars	<u>Food Service</u> <u>(51)</u>	<u>Child Care</u> <u>Operations</u> <u>(52)</u>	<u>Other Enterprise</u> <u>(58)</u>	<u>TOTAL</u>	<u>Internal Service</u> <u>(60)</u>
Assets And Deferred Outflows Of Resources					
Current Assets					
0100 Cash and Cash Equivalents	1,841,398			1,841,398	
0110 Investments					
0130 Due From Other Funds	103,265			103,265	
0141 Due From Other Governments					
0142 State Revenue Receivable	6,345			6,345	
0143 Federal Revenue Receivable	123,735			123,735	
0146 Due from Primary Government					
0147 Due from Component Unit					
0150 Other Receivables	3,450			3,450	
0170 Inventories	136,540			136,540	
0180 Prepaid Expenses (Expenditures)					
0190 Other Current Assets					
Total Current Assets	\$2,214,733			\$2,214,733	
Noncurrent Assets					
0211 Land					
0212 Site Improvements (Net)					
0220 Buildings and Building Improvements (Net)					
0230 Machinery, Equipment and Furniture (Net)	23,146			23,146	
0250 Construction in Progress					
0260 Long Term Prepayments					
0290 Other Noncurrent Assets					
Total Noncurrent Assets	\$23,146			\$23,146	
0910 Deferred Outflows of Resources	372,518			372,518	
Total Assets And Deferred Outflows Of Resources	\$2,610,397			\$2,610,397	

Amounts Expressed in Whole Dollars	<u>Food Service</u> <u>(51)</u>	<u>Child Care</u> <u>Operations</u> <u>(52)</u>	<u>Other Enterprise</u> <u>(58)</u>	<u>TOTAL</u>	<u>Internal Service</u> <u>(60)</u>
Liabilities And Deferred Inflows Of Resources And Net Position					
Current Liabilities					
0400 Due to Other Funds					
0411 Due to Other Governments					
0413 Due to Component Unit					
0420 Accounts Payable	10,188			10,188	
0430 Contracts Payable					
0440 Current Portion of Long-Term Debt					
0450 Short-Term Payables					
0461 Accrued Salaries and Benefits	18,064			18,064	
0462 Payroll Deductions and Withholding					
0480 Unearned Revenues	70,472			70,472	
0490 Other Current Liabilities	7,190			7,190	
Total Current Liabilities	\$105,914			\$105,914	
Noncurrent Liabilities					
0510 Bonds Payable					
0520 Extended-Term Financing Agreements Payable					
0530 Lease Obligations					
0540 Accumulated Compensated Absences					
0550 Authority Lease Obligations					
0560 Other Post-Employment Benefits (OPEB)	152,857			152,857	
0570 Net Pension Liability	1,716,456			1,716,456	
0599 Other Noncurrent Liabilities					
Total Noncurrent Liabilities	\$1,869,313			\$1,869,313	
Total Liabilities	\$1,975,227			\$1,975,227	
0950 Deferred Inflows of Resources	848,920			848,920	
Net Position					
0791 Net Investment in Capital Assets	23,146			23,146	
0008 Restricted Net Position (0792 – 0798)					
0799 Unrestricted Net Position	(236,896)			(236,896)	
Total Net Position	(\$213,750)			(\$213,750)	
Total Liabilities And Deferred Inflows Of Resources And Net Position	\$2,610,397			\$2,610,397	

Amounts Expressed in Whole Dollars		<u>Food Service</u> <u>(51)</u>	<u>Child Care Operations</u> <u>(52)</u>	<u>Other Enterprise</u> <u>(58)</u>	<u>TOTAL</u>	<u>Internal Service</u> <u>(60)</u>
Operating Revenues						
6600	Food Service Revenue	126,071			126,071	
0071	Charges for Services					
0072	Other Operating Revenue					
Total Operating Revenues		\$126,071			\$126,071	
Operating Expenses						
100	Personnel Services – Salaries	887,435			887,435	
200	Personnel Services – Employee Benefits	164,769			164,769	
300	Purchased Professional and Technical Services	4,318			4,318	
400	Purchased Property Services	41,045			41,045	
500	Other Purchased Services	1,695			1,695	
600	Supplies	1,245,002			1,245,002	
740	Depreciation	2,874			2,874	
810	Dues and Fees	1,308			1,308	
880	Refunds of Prior Years' Receipts					
890	Miscellaneous Expenditures	3,220			3,220	
Total Operating Expenses		\$2,351,666			\$2,351,666	
Operating Income (Loss)		(\$2,225,595)			(\$2,225,595)	
Non Operating Revenues (Expenses)						
6500	Earnings on Investments	7,214			7,214	
6920	Contributions and Donations from Private Sources					
6930	Gains or Losses on Sale of Fixed Assets					
6991	Refunds of a Prior Year Expenditure					
7000	Revenue from State Sources	328,444			328,444	
8000	Revenue from Federal Sources	3,369,448			3,369,448	
9990	Insurance Recoveries					
820	Claims and Judgments Against the LEA					
830	Interest					
TOTAL Non Operating Revenues (Expenses)		\$3,705,106			\$3,705,106	
Income (Loss) Before Contributions And Transfers		\$1,479,511			\$1,479,511	

Amounts Expressed in Whole Dollars	<u>Food Service</u> <u>(51)</u>	<u>Child Care Operations</u> <u>(52)</u>	<u>Other Enterprise</u> <u>(58)</u>	<u>TOTAL</u>	<u>Internal Service</u> <u>(60)</u>
Contributions, Transfers, and Special and Extraordinary Items					
5200 Interfund Transfers – Out	60,477			60,477	
5300 Transfers Out to Component Units/Primary Governments					
5520 Special Items – Losses					
5530 Extraordinary Items – Losses					
9300 Interfund Transfers - IN					
9500 Capital Contributions					
9700 Transfers IN From Component Units/Primary Governments					
9920 Special Items – Gains					
9930 Extraordinary Items – Gains					
Change In Net Position	\$1,419,034			\$1,419,034	
0002 Net Position - Beginning of Fiscal Year	(1,632,784)			(1,632,784)	
0003 Accounting Changes / Residual Equity Transfers					
Net Position - End Of Year	(\$213,750)			(\$213,750)	

LEA : 114065503 Muhlenberg SD

Printed 1/3/2023 11:55:46 AM

Amounts Expressed in Whole Dollars		<u>Food Service</u> <u>(51)</u>	<u>Child Care Operations</u> <u>(52)</u>	<u>Other Enterprise</u> <u>(58)</u>	<u>TOTAL</u>	<u>Internal Service(60)</u>
Cash Flows From Operating Activities						
0011	Cash Receipts From Users	115,451			115,451	
0012	Cash Receipts From Assessments Made to Other Funds					
0013	Cash Receipts From Earnings on Investments					
0014	Cash Receipts From Other Operating Revenue					
0015	Cash Payments To Employees For Services	1,444,249			1,444,249	
0016	Cash Payments For Insurance Claims					
0017	Cash Payments To Suppliers For Goods and Services	1,159,973			1,159,973	
0018	Cash Payments For Other Operating Expenses	4,528			4,528	
Net Cash Provided By (Used For) Operating Activities		(\$2,493,299)			(\$2,493,299)	
Cash Flows From Non-Capital Financing Activities						
0021	Receipts From Local Sources - 6000					
0022	Receipts From State Sources - 7000	327,140			327,140	
0023	Receipts From Federal Sources -8000	3,178,721			3,178,721	
0024	Notes and Loans Received (Repaid)					
0025	Interest Paid on Notes/Loans - 5100-830					
0026	Operating Transfers In (Out)/Residual Equity Trans					
0027	Operating Transfers In (Out) Primary Government / Comp Unit	(60,477)			(60,477)	
0028	Receipts From Refund of Prior Year Expenditures - 6991					
0029	Special and Extraordinary Gains (losses)					
0030	Receipts from Insurance Recoveries -9990					
Net Cash Prov By (Used for) Non-Capital Financing Activities		\$3,445,384			\$3,445,384	
Cash Flows From Capital and Related Financing Activities						
0031	Payments For Fac Acq, Const, and Imp - 4000					
0032	Gain / (Loss) on Sale of Fixed Assets - 6930					
0033	Proceeds From Extended Term Financing - 9200					
0034	Principal Paid on Financing Agreements					
0035	Interest Paid on Financing Agreements - 5100-830					
0036	(Inc) Dec in Contributed Capital					
Net Cash Prov By (Used for) Capital and Related Financing Activities						
Cash Flows From Investing Activities						
0041	Earnings on Investments - 6500	7,214			7,214	
0042	Purchase of Inv Securities / Deposits to Inv Pools					
0043	Receipts From Investment Pool Withdrawals					
0044	Proceeds from Sale and Maturity of Inv Securities					

LEA : 114065503 Muhlenberg SD

Printed 1/3/2023 11:55:46 AM

0045 Loans Received (Paid)

Net Cash Prov By (Used for) Investing Activities	\$7,214	\$7,214
--	---------	---------

LEA : 114065503 Muhlenberg SD

Printed 1/3/2023 11:55:46 AM

	<u>Food Service</u> <u>(51)</u>	<u>Child Care Operations</u> <u>(52)</u>	<u>Other Enterprise</u> <u>(58)</u>	<u>TOTAL</u>	<u>Internal Service</u> <u>(60)</u>
Net Increase (Decrease) in Cash Flows	959,299			959,299	
0004 Cash and Cash Equivalents Beginning of Year	882,099			882,099	
Cash and Cash Equivalents at Year End	\$1,841,398			\$1,841,398	
<hr/>					
Reconciliation of Operating Income (Loss) To Net Cash Provided by (Used For) Operating Activities					
0005 Operating Income (Loss) per REP	(2,225,595)			(2,225,595)	
Adjustments					
0051 Depreciation and Net Amortization	2,874			2,874	
0052 Provision for Uncollectible Accounts					
0053 Other Adjustments	163,383			163,383	
Effect of Changes in Assets, Liabilities, Deferred Outflows and Deferred Inflows					
0054 (Inc) Dec In Accounts Receivable (0120-0150)	(2,642)			(2,642)	
0055 Advances to Other Funds (0160)	(116,871)			(116,871)	
0056 (Inc) Dec in Inventories (0170)	(16,182)			(16,182)	
0057 (Inc) Dec in Prepaid Expenses (0180)					
0058 (Inc) Dec in Other Current or Noncurrent Assets					
0064 Deferred Outflows (0910)	45,788			45,788	
0059 Inc (Dec) in Accounts Payable (0400-0450)	805			805	
0060 Inc (Dec) in Accrued Salaries/Benefits (0461)	(8,628)			(8,628)	
0065 Inc (Dec) in Net Pension Liabilities (0570)	(1,098,249)			(1,098,249)	
0066 Inc (Dec) in Other Postemp Benefit Oblig (0560)	9,115			9,115	
0061 Inc (Dec) in Payroll Deductions/Withholding (0462)					
0062 Inc (Dec) in Unearned Revenue (0480)	(23,897)			(23,897)	
0063 Inc (Dec) in Other Current or Noncurrent Liabilities	7,190			7,190	
0067 Deferred Inflows (0950)	769,610			769,610	
Total Adjustments	(\$267,704)			(\$267,704)	
Cash Provided By (Used for) Total	(\$2,493,299)			(\$2,493,299)	
<hr/>					

COMBINED STATEMENT OF CASH FLOWS
SCHEDULE OF NONCASH INVESTING, CAPITAL, AND FINANCING ACTIVITIES

Explanation of Transaction and Balance Sheet Effect	Amount
US Dept of Agriculture - Commodities	163,383
Total	\$163,383

	Revenue Reported In Current Year	Current Year Tax Accrual	Prior Year Tax Accrual	Taxes Collected In Current Year
Revenue from Local Sources				
6111 Current Real Estate Taxes	37,207,585.01			37,207,585.01
6112 Interim Real Estate Taxes	87,627.30			87,627.30
6113 Public Utility Realty Taxes	41,294.57			41,294.57
6114 Payments in Lieu of Current Taxes - State / Local	7,905.45			7,905.45
6143 Current Act 511 Local Services Taxes	89,614.87			89,614.87
6151 Current Act 511 Earned Income Taxes	3,484,223.72	171,577.72	118,966.26	3,431,612.26
6153 Current Act 511 Real Estate Transfer Taxes	1,479,142.25	48,200.55	102,534.61	1,533,476.31
6157 Current Act 511 Mercantile Taxes	1,189,735.83	345.09	956.07	1,190,346.81
6411 Delinquent Real Estate Taxes	665,262.22	603,000.85	671,817.82	734,079.19
6500 Earnings on Investments	35,284.37			
6700 Revenues from LEA Activities	19,000.00			
6832 Federal IDEA Revenue Received as Pass Through	696,593.19			
6833 Federal ARRA IDEA Revenue Received as Pass Through	60,519.17			
6910 Rentals	3,944.32			
6920 Contributions and Donations from Private Sources	13,500.00			
6944 Receipts from Other LEAs in Pennsylvania - Education	3,040.12			
6991 Refunds of a Prior Year Expenditure	162,315.13			
6992 Energy Efficiency Revenues and Incentives	11,329.18			
6999 Other Revenues Not Specified Above	35,682.37			
TOTAL Revenue from Local Sources	\$45,293,599.07	\$823,124.21	\$894,274.76	\$44,323,541.77

	Revenue Reported In Current Year			
<u>Revenue from State Sources</u>				
7111 Basic Education Funding-Formula	6,834,450.90			
7112 Basic Education Funding-Social Security	1,358,682.88			
7160 Tuition for Orphans Subsidy	56,012.36			
7250 Migratory Children	676.00			
7271 Special Education funds for School-Aged Pupils	2,155,294.59			
7311 Pupil Transportation Subsidy	697,302.95			
7312 Nonpublic and Charter School Pupil Transportation Subsidy	76,230.00			
7320 Rental and Sinking Fund Payments / Building Reimbursement Subsidy	1,318,278.04			
7330 Health Services (Medical, Dental, Nurse, Act 25)	75,664.01			
7340 State Property Tax Reduction Allocation	1,200,625.60			
7361 School Safety and Security Grants	5,000.00			
7505 Ready to Learn Block Grant	447,941.00			
7506 PAsmart Grants	11,557.92			
7820 State Share of Retirement Contributions	6,290,378.15			
TOTAL Revenue from State Sources	\$20,528,094.40			

Revenue Reported In Current Year				
Revenue from Federal Sources				
8390 Other Restricted Federal Grants-in-Aid Directly from the Federal Government	67,931.88			
8514 NCLB, Title I - Improving the Academic Achievement of the Disadvantaged	795,376.79			
8515 NCLB, Title II - Preparing, Training and Recruiting High Quality Teachers and Principals	120,546.58			
8516 NCLB, Title III - Language Instruction for Limited English Proficient and Immigrant Students	61,419.51			
8517 NCLB, Title IV - 21st Century Schools	62,337.66			
8741 Elementary and Secondary School Emergency Relief Fund (ESSER)	64,490.01			
8743 ESSER II - Elementary and Secondary School Emergency Relief Fund	2,214,788.85			
8744 ARP ESSER - Elementary and Secondary School Emergency Relief Fund	1,748,985.42			
8747 ARP ECF - Emergency Connectivity Fund	86,167.50			
8751 ARP ESSER Learning Loss	11,336.58			
8752 ARP ESSER Summer Programs	29,680.00			
8753 ARP ESSER Afterschool Programs	62,843.00			
8754 ARP ESSER Homeless Children and Youth Funds	8,446.71			
8810 School-Based Access Medicaid Reimbursement Program (SBAP) Reimbursements (Access)	190,461.96			
8820 Medical Assistance Reimbursement for Administrative Claiming (Quarterly) Program	21,102.65			
TOTAL Revenue from Federal Sources	\$5,545,915.10			

	Revenue Reported In Current Year			
<u>Other Financing Sources</u>				
9350 Enterprise Fund Transfers	60,477.21			
TOTAL Other Financing Sources	\$60,477.21			
TOTAL FROM ALL SOURCES	\$71,428,085.78	\$823,124.21	\$894,274.76	\$44,323,541.77

LEA : 114065503 Muhlenberg SD

Printed 1/3/2023 11:55:52 AM

	<u>General Fund (10)</u>	<u>Student Sponsored Activity Fund (21)</u>	<u>Public Purpose Trust (27)</u>	<u>Other Compt Approved (28)</u>	<u>Athletic / Activity (29)</u>	<u>Capital Reserve (690, 1850) (31)</u>
6000 Revenue from Local Sources						
6111 Current Real Estate Taxes	37,207,585.01					
6112 Interim Real Estate Taxes	87,627.30					
6113 Public Utility Realty Taxes	41,294.57					
6114 Payments in Lieu of Current Taxes - State / Local	7,905.45					
6143 Current Act 511 Local Services Taxes	89,614.87					
6151 Current Act 511 Earned Income Taxes	3,484,223.72					
6153 Current Act 511 Real Estate Transfer Taxes	1,479,142.25					
6157 Current Act 511 Mercantile Taxes	1,189,735.83					
6411 Delinquent Real Estate Taxes	665,262.22					
6500 Earnings on Investments	35,284.37	577.33			30.01	
6700 Revenues from LEA Activities	19,000.00	188,569.14			64,037.52	
6832 Federal IDEA Revenue Received as Pass Through	696,593.19					
6833 Federal ARRA IDEA Revenue Received as Pass Through	60,519.17					
6910 Rentals	3,944.32					
6920 Contributions and Donations from Private Sources	13,500.00	5,345.00				
6944 Receipts from Other LEAs in Pennsylvania - Education	3,040.12					
6991 Refunds of a Prior Year Expenditure	162,315.13					
6992 Energy Efficiency Revenues and Incentives	11,329.18					
6999 Other Revenues Not Specified Above	35,682.37					
6000 Total Revenue from Local Sources	\$45,293,599.07	\$194,491.47			\$64,067.53	
7000 Revenue from State Sources						
7111 Basic Education Funding-Formula	6,834,450.90					
7112 Basic Education Funding-Social Security	1,358,682.88					
7160 Tuition for Orphans Subsidy	56,012.36					
7250 Migratory Children	676.00					
7271 Special Education funds for School-Aged Pupils	2,155,294.59					
7311 Pupil Transportation Subsidy	697,302.95					
7312 Nonpublic and Charter School Pupil Transportation Subsidy	76,230.00					
7320 Rental and Sinking Fund Payments / Building Reimbursement Subsidy	1,318,278.04					
7330 Health Services (Medical, Dental, Nurse, Act 25)	75,664.01					
7340 State Property Tax Reduction Allocation	1,200,625.60					
7361 School Safety and Security Grants	5,000.00					
7505 Ready to Learn Block Grant	447,941.00					
7506 PAsmart Grants	11,557.92					

LEA : 114065503 Muhlenberg SD

Printed 1/3/2023 11:55:52 AM

	<u>Capital Reserve</u> <u>(1431) (32)</u>	<u>Other Capital</u> <u>Projects Fund (39)</u>	<u>Debt Service (40)</u>	<u>Permanent (90)</u>	<u>Total</u>
6000 Revenue from Local Sources					
6111 Current Real Estate Taxes					37,207,585.01
6112 Interim Real Estate Taxes					87,627.30
6113 Public Utility Realty Taxes					41,294.57
6114 Payments in Lieu of Current Taxes - State / Local					7,905.45
6143 Current Act 511 Local Services Taxes					89,614.87
6151 Current Act 511 Earned Income Taxes					3,484,223.72
6153 Current Act 511 Real Estate Transfer Taxes					1,479,142.25
6157 Current Act 511 Mercantile Taxes					1,189,735.83
6411 Delinquent Real Estate Taxes					665,262.22
6500 Earnings on Investments	3,331.00	19.00			39,241.71
6700 Revenues from LEA Activities					271,606.66
6832 Federal IDEA Revenue Received as Pass Through					696,593.19
6833 Federal ARRA IDEA Revenue Received as Pass Through					60,519.17
6910 Rentals					3,944.32
6920 Contributions and Donations from Private Sources					18,845.00
6944 Receipts from Other LEAs in Pennsylvania - Education					3,040.12
6991 Refunds of a Prior Year Expenditure					162,315.13
6992 Energy Efficiency Revenues and Incentives					11,329.18
6999 Other Revenues Not Specified Above					35,682.37
6000 Total Revenue from Local Sources	\$3,331.00	\$19.00			\$45,555,508.07
7000 Revenue from State Sources					
7111 Basic Education Funding-Formula					6,834,450.90
7112 Basic Education Funding-Social Security					1,358,682.88
7160 Tuition for Orphans Subsidy					56,012.36
7250 Migratory Children					676.00
7271 Special Education funds for School-Aged Pupils					2,155,294.59
7311 Pupil Transportation Subsidy					697,302.95
7312 Nonpublic and Charter School Pupil Transportation Subsidy					76,230.00
7320 Rental and Sinking Fund Payments / Building Reimbursement Subsidy					1,318,278.04
7330 Health Services (Medical, Dental, Nurse, Act 25)					75,664.01
7340 State Property Tax Reduction Allocation					1,200,625.60
7361 School Safety and Security Grants					5,000.00
7505 Ready to Learn Block Grant					447,941.00
7506 PAsmart Grants					11,557.92

LEA : 114065503 Muhlenberg SD

Printed 1/3/2023 11:55:52 AM

	<u>General Fund (10)</u>	<u>Student Sponsored Activity Fund (21)</u>	<u>Public Purpose Trust (27)</u>	<u>Other Compt Approved (28)</u>	<u>Athletic / Activity (29)</u>	<u>Capital Reserve (690, 1850) (31)</u>
7000 Revenue from State Sources						
7820 State Share of Retirement Contributions	6,290,378.15					
7000 Total Revenue from State Sources	\$20,528,094.40					
8000 Revenue from Federal Sources						
8390 Other Restricted Federal Grants-in-Aid Directly from the Federal Government	67,931.88					
8514 NCLB, Title I - Improving the Academic Achievement of the Disadvantaged	795,376.79					
8515 NCLB, Title II - Preparing, Training and Recruiting High Quality Teachers and Principals	120,546.58					
8516 NCLB, Title III - Language Instruction for Limited English Proficient and Immigrant Students	61,419.51					
8517 NCLB, Title IV - 21st Century Schools	62,337.66					
8741 Elementary and Secondary School Emergency Relief Fund (ESSER)	64,490.01					
8743 ESSER II - Elementary and Secondary School Emergency Relief Fund	2,214,788.85					
8744 ARP ESSER - Elementary and Secondary School Emergency Relief Fund	1,748,985.42					
8747 ARP ECF - Emergency Connectivity Fund	86,167.50					
8751 ARP ESSER Learning Loss	11,336.58					
8752 ARP ESSER Summer Programs	29,680.00					
8753 ARP ESSER Afterschool Programs	62,843.00					
8754 ARP ESSER Homeless Children and Youth Funds	8,446.71					
8810 School-Based Access Medicaid Reimbursement Program (SBAP) Reimbursements (Access)	190,461.96					
8820 Medical Assistance Reimbursement for Administrative Claiming (Quarterly) Program	21,102.65					
8000 Total Revenue from Federal Sources	\$5,545,915.10					
9000 Other Financing Sources						
9310 General Fund Transfers						
9350 Enterprise Fund Transfers	60,477.21					
9000 Total Other Financing Sources	\$60,477.21					
Total From All Sources	\$71,428,085.78	\$194,491.47			\$64,067.53	

LEA : 114065503 Muhlenberg SD

Printed 1/3/2023 11:55:52 AM

	<u>Capital Reserve</u> <u>(1431) (32)</u>	<u>Other Capital</u> <u>Projects Fund (39)</u>	<u>Debt Service (40)</u>	<u>Permanent (90)</u>	<u>Total</u>
7000 Revenue from State Sources					
7820 State Share of Retirement Contributions					6,290,378.15
7000 Total Revenue from State Sources					\$20,528,094.40
8000 Revenue from Federal Sources					
8390 Other Restricted Federal Grants-in-Aid Directly from the Federal Government					67,931.88
8514 NCLB, Title I - Improving the Academic Achievement of the Disadvantaged					795,376.79
8515 NCLB, Title II - Preparing, Training and Recruiting High Quality Teachers and Principals					120,546.58
8516 NCLB, Title III - Language Instruction for Limited English Proficient and Immigrant Students					61,419.51
8517 NCLB, Title IV - 21st Century Schools					62,337.66
8741 Elementary and Secondary School Emergency Relief Fund (ESSER)					64,490.01
8743 ESSER II - Elementary and Secondary School Emergency Relief Fund					2,214,788.85
8744 ARP ESSER - Elementary and Secondary School Emergency Relief Fund					1,748,985.42
8747 ARP ECF - Emergency Connectivity Fund					86,167.50
8751 ARP ESSER Learning Loss					11,336.58
8752 ARP ESSER Summer Programs					29,680.00
8753 ARP ESSER Afterschool Programs					62,843.00
8754 ARP ESSER Homeless Children and Youth Funds					8,446.71
8810 School-Based Access Medicaid Reimbursement Program (SBAP) Reimbursements (Access)					190,461.96
8820 Medical Assistance Reimbursement for Administrative Claiming (Quarterly) Program					21,102.65
8000 Total Revenue from Federal Sources					\$5,545,915.10
9000 Other Financing Sources					
9310 General Fund Transfers			5,703,900.00		5,703,900.00
9350 Enterprise Fund Transfers					60,477.21
9000 Total Other Financing Sources			\$5,703,900.00		\$5,764,377.21
Total From All Sources	\$3,331.00	\$19.00	\$5,703,900.00		\$77,393,894.78

LEA : 114065503 Muhlenberg SD

Printed 1/3/2023 11:55:56 AM

	<u>General Fund (10)</u>	<u>Student Sponsored Activity Fund (21)</u>	<u>Public Purpose Trust (27)</u>	<u>Other Compt Approved (28)</u>	<u>Athletic / Activity (29)</u>	<u>Capital Reserve (690. 1850) (31)</u>
Revenue from Local Sources	45,293,599.07	194,491.47			64,067.53	
Revenue from State Sources	20,528,094.40					
Revenue from Federal Sources	5,545,915.10					
Other Financing Sources	60,477.21					
Total From All Sources	\$71,428,085.78	\$194,491.47			\$64,067.53	

LEA : 114065503 Muhlenberg SD

Printed 1/3/2023 11:55:56 AM

	<u>Capital Reserve (1431)</u> <u>(32)</u>	<u>Other Capital Projects</u> <u>Fund (39)</u>	<u>Debt Service (40)</u>	<u>Permanent (90)</u>	<u>Total</u>
Revenue from Local Sources	3,331.00	19.00			45,555,508.07
Revenue from State Sources					20,528,094.40
Revenue from Federal Sources					5,545,915.10
Other Financing Sources			5,703,900.00		5,764,377.21
Total From All Sources	\$3,331.00	\$19.00	\$5,703,900.00		\$77,393,894.78

LEA : 114065503 Muhlenberg SD

Printed 1/3/2023 11:55:59 AM

General Fund (10)

1000 Instruction		Total
100 <u>Personnel Services – Salaries</u>		
100 Personnel Services – Salaries		19,859,832.77
Total Personnel Services – Salaries		\$19,859,832.77
200 <u>Personnel Services – Employee Benefits</u>		
210 Group Insurance – Contracted Provider		3,794,411.24
220 Social Security Contributions		1,466,434.75
230 PSERS Retirement Contributions		6,810,814.58
250 Unemployment Compensation		16,970.15
260 Workers' Compensation		133,874.51
Total Personnel Services – Employee Benefits		\$12,222,505.23
300 <u>Purchased Professional and Technical Services</u>		
322 Professional Educational Services – Ius		457,798.31
323 Professional Educational Services – Other Educational Agencies		470,393.10
329 Professional Educational Services – Other		487,188.37
330 Other Professional Services		71,191.44
340 Technical Services		215.32
390 Other Purchased Professional and Technical Services		1,300.00
Total Purchased Professional and Technical Services		\$1,488,086.54
400 <u>Purchased Property Services</u>		
430 Repairs and Maintenance Services		68,963.28
440 Rentals		30,826.41
Total Purchased Property Services		\$99,789.69
500 <u>Other Purchased Services</u>		
510 Student Transportation Services		132,879.60
550 Printing and Binding		2,540.60
561 Tuition To Other School Districts Within the State		32,608.90
562 Tuition To Pennsylvania Charter Schools		1,314,834.46
563 Tuition To Nonpublic Schools		798,644.18
564 Tuition To Career and Technology Centers		2,265,815.77
567 Tuition To Approved Private Schools (APS) and PA Chartered Schools for the Deaf and Blind		90,093.76
568 Tuition To Private Residential Rehabilitative Institutions (PRRI) [In-State] and Detention Centers		257,206.63
569 Tuition – Other		3,653.37
580 Travel		1,154.66
Total Other Purchased Services		\$4,899,431.93
600 <u>Supplies</u>		
610 General Supplies		620,492.37
630 Food		52,462.96
640 Books and Periodicals		15,650.01
650 Supplies & Fees – Technology Related		862,067.88
Total Supplies		\$1,550,673.22
700 <u>Property</u>		
752 Capital Equipment – Original and Additional		28,464.00
756 Capitalized Technology Equipment – Original		259,013.48

LEA : 114065503 Muhlenberg SD

Printed 1/3/2023 11:55:59 AM

General Fund (10)		
1000 Instruction		<u>Total</u>
700 <u>Property</u>		
762 Capitalized Equipment - Replacement	16,083.99	
Total Property		\$303,561.47
800 <u>Other Objects</u>		
810 Dues and Fees	1,053.00	
890 Miscellaneous Expenditures	10,648.47	
Total Other Objects		\$11,701.47
Total 1000 Instruction		\$40,435,582.32

LEA : 114065503 Muhlenberg SD

Printed 1/3/2023 11:55:59 AM

General Fund (10)

1100 Regular Programs – Elementary / Secondary

	Elementary	Secondary	Federal	Total
100 <u>Personnel Services – Salaries</u>				
100 Personnel Services – Salaries	6,498,973.38	7,018,853.31	690,979.37	14,208,806.06
Total Personnel Services – Salaries	\$6,498,973.38	\$7,018,853.31	\$690,979.37	\$14,208,806.06
200 <u>Personnel Services – Employee Benefits</u>				
210 Group Insurance – Contracted Provider	1,186,121.79	1,319,158.96	42,305.35	2,547,586.10
220 Social Security Contributions	526,538.89	520,935.31	460.17	1,047,934.37
230 PSERS Retirement Contributions	2,456,164.94	2,447,287.29	178.59	4,903,630.82
250 Unemployment Compensation	5,730.53	5,730.53		11,461.06
260 Workers' Compensation	44,676.60	44,676.60		89,353.20
Total Personnel Services – Employee Benefits	\$4,219,232.75	\$4,337,788.69	\$42,944.11	\$8,599,965.55
300 <u>Purchased Professional and Technical Services</u>				
322 Professional Educational Services – lus		4,558.53		4,558.53
323 Professional Educational Services – Other Educational Agencies	260.00	299,575.40	169,610.00	469,445.40
329 Professional Educational Services – Other	93,122.15	344,143.12	5,000.00	442,265.27
340 Technical Services	215.32			215.32
390 Other Purchased Professional and Technical Services	300.00			300.00
Total Purchased Professional and Technical Services	\$93,897.47	\$648,277.05	\$174,610.00	\$916,784.52
400 <u>Purchased Property Services</u>				
430 Repairs and Maintenance Services	27,378.50	37,609.01		64,987.51
440 Rentals	15,306.73	9,294.50		24,601.23
Total Purchased Property Services	\$42,685.23	\$46,903.51		\$89,588.74
500 <u>Other Purchased Services</u>				
510 Student Transportation Services	(150.00)	4,012.43		3,862.43
550 Printing and Binding	605.60	1,935.00		2,540.60
561 Tuition To Other School Districts Within the State		948.79		948.79
562 Tuition To Pennsylvania Charter Schools	146,916.69	480,152.94		627,069.63
563 Tuition To Nonpublic Schools	6,393.41	13,746.46		20,139.87
568 Tuition To Private Residential Rehabilitative Institutions (PRRI) [In-State] and Detention Centers	34,379.57	96,780.10		131,159.67
569 Tuition – Other		3,653.37		3,653.37
580 Travel	112.22			112.22
Total Other Purchased Services	\$188,257.49	\$601,229.09		\$789,486.58
600 <u>Supplies</u>				
610 General Supplies	62,681.78	117,041.45	363,890.90	543,614.13
630 Food	1,868.46		40.00	1,908.46
640 Books and Periodicals	(1.66)	12,658.38		12,656.72
650 Supplies & Fees – Technology Related	59,757.48	50,936.16	747,090.27	857,783.91
Total Supplies	\$124,306.06	\$180,635.99	\$1,111,021.17	\$1,415,963.22
700 <u>Property</u>				
752 Capital Equipment – Original and Additional		13,269.00		13,269.00
756 Capitalized Technology Equipment – Original			259,013.48	259,013.48
762 Capitalized Equipment - Replacement		16,083.99		16,083.99
Total Property		\$29,352.99	\$259,013.48	\$288,366.47

LEA : 114065503 Muhlenberg SD

Printed 1/3/2023 11:55:59 AM

General Fund (10)

1100 Regular Programs – Elementary / Secondary	<u>Elementary</u>	<u>Secondary</u>	<u>Federal</u>	<u>Total</u>
800 <u>Other Objects</u>				
890 Miscellaneous Expenditures		430.00		430.00
Total Other Objects		\$430.00		\$430.00
Total 1100 Regular Programs – Elementary / Secondary	\$11,167,352.38	\$12,863,470.63	\$2,278,568.13	\$26,309,391.14

LEA : 114065503 Muhlenberg SD

Printed 1/3/2023 11:55:59 AM

General Fund (10)

1110 Regular Programs

	Elementary	Secondary	Federal	Total
100 <u>Personnel Services – Salaries</u>				
100 Personnel Services – Salaries	6,498,973.38	7,018,853.31	156,893.53	13,674,720.22
Total Personnel Services – Salaries	\$6,498,973.38	\$7,018,853.31	\$156,893.53	\$13,674,720.22
200 <u>Personnel Services – Employee Benefits</u>				
210 Group Insurance – Contracted Provider	1,186,121.79	1,319,158.96		2,505,280.75
220 Social Security Contributions	526,538.89	520,935.31	460.17	1,047,934.37
230 PSERS Retirement Contributions	2,456,164.94	2,447,287.29	178.59	4,903,630.82
250 Unemployment Compensation	5,730.53	5,730.53		11,461.06
260 Workers' Compensation	44,676.60	44,676.60		89,353.20
Total Personnel Services – Employee Benefits	\$4,219,232.75	\$4,337,788.69	\$638.76	\$8,557,660.20
300 <u>Purchased Professional and Technical Services</u>				
322 Professional Educational Services – lus		4,558.53		4,558.53
323 Professional Educational Services – Other Educational Agencies	260.00	299,575.40		299,835.40
329 Professional Educational Services – Other	93,122.15	344,143.12		437,265.27
340 Technical Services	215.32			215.32
390 Other Purchased Professional and Technical Services	300.00			300.00
Total Purchased Professional and Technical Services	\$93,897.47	\$648,277.05		\$742,174.52
400 <u>Purchased Property Services</u>				
430 Repairs and Maintenance Services	27,378.50	37,609.01		64,987.51
440 Rentals	15,306.73	9,294.50		24,601.23
Total Purchased Property Services	\$42,685.23	\$46,903.51		\$89,588.74
500 <u>Other Purchased Services</u>				
510 Student Transportation Services	(150.00)	4,012.43		3,862.43
550 Printing and Binding	605.60	1,935.00		2,540.60
561 Tuition To Other School Districts Within the State		948.79		948.79
562 Tuition To Pennsylvania Charter Schools	146,916.69	480,152.94		627,069.63
563 Tuition To Nonpublic Schools	6,393.41	13,746.46		20,139.87
568 Tuition To Private Residential Rehabilitative Institutions (PRRI) [In-State] and Detention Centers	34,379.57	96,780.10		131,159.67
569 Tuition – Other		3,653.37		3,653.37
580 Travel	112.22			112.22
Total Other Purchased Services	\$188,257.49	\$601,229.09		\$789,486.58
600 <u>Supplies</u>				
610 General Supplies	62,681.78	117,041.45	12,001.34	191,724.57
630 Food	1,868.46			1,868.46
640 Books and Periodicals	(1.66)	12,658.38		12,656.72
650 Supplies & Fees – Technology Related	59,757.48	50,936.16	555,627.10	666,320.74
Total Supplies	\$124,306.06	\$180,635.99	\$567,628.44	\$872,570.49
700 <u>Property</u>				
752 Capital Equipment – Original and Additional		13,269.00		13,269.00
762 Capitalized Equipment - Replacement		16,083.99		16,083.99
Total Property		\$29,352.99		\$29,352.99
800 <u>Other Objects</u>				

LEA : 114065503 Muhlenberg SD

Printed 1/3/2023 11:55:59 AM

General Fund (10)

1110 Regular Programs

	<u>Elementary</u>	<u>Secondary</u>	<u>Federal</u>	<u>Total</u>
800 <u>Other Objects</u>				
890 Miscellaneous Expenditures		430.00		430.00
Total Other Objects		\$430.00		\$430.00
Total 1110 Regular Programs	\$11,167,352.38	\$12,863,470.63	\$725,160.73	\$24,755,983.74

LEA : 114065503 Muhlenberg SD

Printed 1/3/2023 11:55:59 AM

General Fund (10)

1190 Federally-Funded Regular Programs

	<u>Elementary</u>	<u>Secondary</u>	<u>Federal</u>	<u>Total</u>
100 <u>Personnel Services – Salaries</u>				
100 Personnel Services – Salaries			534,085.84	534,085.84
Total Personnel Services – Salaries			\$534,085.84	\$534,085.84
200 <u>Personnel Services – Employee Benefits</u>				
210 Group Insurance – Contracted Provider			42,305.35	42,305.35
Total Personnel Services – Employee Benefits			\$42,305.35	\$42,305.35
300 <u>Purchased Professional and Technical Services</u>				
323 Professional Educational Services – Other Educational Agencies			169,610.00	169,610.00
329 Professional Educational Services – Other			5,000.00	5,000.00
Total Purchased Professional and Technical Services			\$174,610.00	\$174,610.00
600 <u>Supplies</u>				
610 General Supplies			351,889.56	351,889.56
630 Food			40.00	40.00
650 Supplies & Fees – Technology Related			191,463.17	191,463.17
Total Supplies			\$543,392.73	\$543,392.73
700 <u>Property</u>				
756 Capitalized Technology Equipment – Original			259,013.48	259,013.48
Total Property			\$259,013.48	\$259,013.48
Total 1190 Federally-Funded Regular Programs			\$1,553,407.40	\$1,553,407.40

LEA : 114065503 Muhlenberg SD

Printed 1/3/2023 11:55:59 AM

General Fund (10)

1200 Special Programs – Elementary / Secondary	Elementary	Secondary	Federal	Total
100 Personnel Services – Salaries				
100 Personnel Services – Salaries	1,857,411.90	1,841,805.90	934,162.86	4,633,380.66
Total Personnel Services – Salaries	\$1,857,411.90	\$1,841,805.90	\$934,162.86	\$4,633,380.66
200 Personnel Services – Employee Benefits				
210 Group Insurance – Contracted Provider	559,159.78	539,315.18	84,918.85	1,183,393.81
220 Social Security Contributions	160,643.08	165,076.73	16,465.71	342,185.52
230 PSERS Retirement Contributions	759,029.59	774,819.42	71,036.32	1,604,885.33
250 Unemployment Compensation	2,602.28	2,602.28		5,204.56
260 Workers' Compensation	21,030.16	21,030.17		42,060.33
Total Personnel Services – Employee Benefits	\$1,502,464.89	\$1,502,843.78	\$172,420.88	\$3,177,729.55
300 Purchased Professional and Technical Services				
322 Professional Educational Services – lus	83,880.84	337,417.45	9,129.00	430,427.29
323 Professional Educational Services – Other Educational Agencies		947.70		947.70
329 Professional Educational Services – Other	18,323.10	26,600.00		44,923.10
330 Other Professional Services	35,595.72	35,595.72		71,191.44
Total Purchased Professional and Technical Services	\$137,799.66	\$400,560.87	\$9,129.00	\$547,489.53
400 Purchased Property Services				
430 Repairs and Maintenance Services	202.50	202.50		405.00
Total Purchased Property Services	\$202.50	\$202.50		\$405.00
500 Other Purchased Services				
510 Student Transportation Services		1,298.88		1,298.88
561 Tuition To Other School Districts Within the State		13,090.00		13,090.00
562 Tuition To Pennsylvania Charter Schools	128,135.00	559,629.83		687,764.83
563 Tuition To Nonpublic Schools	288,360.89	490,143.42		778,504.31
567 Tuition To Approved Private Schools (APS) and PA Chartered Schools for the Deaf and Blind		90,093.76		90,093.76
568 Tuition To Private Residential Rehabilitative Institutions (PRRI) [In-State] and Detention Centers	36,198.11	89,848.85		126,046.96
580 Travel	26.70	31.98		58.68
Total Other Purchased Services	\$452,720.70	\$1,244,136.72		\$1,696,857.42
600 Supplies				
610 General Supplies	11,753.46	601.61	35,726.46	48,081.53
640 Books and Periodicals	1,777.12	1,216.17		2,993.29
650 Supplies & Fees – Technology Related	1,635.07	2,648.90		4,283.97
Total Supplies	\$15,165.65	\$4,466.68	\$35,726.46	\$55,358.79
700 Property				
752 Capital Equipment – Original and Additional			15,195.00	15,195.00
Total Property			\$15,195.00	\$15,195.00
800 Other Objects				
810 Dues and Fees	253.00			253.00
890 Miscellaneous Expenditures	160.30			160.30
Total Other Objects	\$413.30			\$413.30
Total 1200 Special Programs – Elementary / Secondary	\$3,966,178.60	\$4,994,016.45	\$1,166,634.20	\$10,126,829.25

LEA : 114065503 Muhlenberg SD

Printed 1/3/2023 11:55:59 AM

General Fund (10)				
1210 Life Skills Support	<u>Elementary</u>	<u>Secondary</u>	<u>Federal</u>	<u>Total</u>
100 <u>Personnel Services – Salaries</u>				
100 Personnel Services – Salaries	72,133.65	138,180.85	17,302.97	227,617.47
Total Personnel Services – Salaries	\$72,133.65	\$138,180.85	\$17,302.97	\$227,617.47
200 <u>Personnel Services – Employee Benefits</u>				
210 Group Insurance – Contracted Provider	22,831.62	55,440.93	4,099.60	82,372.15
220 Social Security Contributions	5,334.02	11,159.19	218.45	16,711.66
230 PSERS Retirement Contributions	25,231.48	52,741.97	1,244.45	79,217.90
Total Personnel Services – Employee Benefits	\$53,397.12	\$119,342.09	\$5,562.50	\$178,301.71
300 <u>Purchased Professional and Technical Services</u>				
329 Professional Educational Services – Other	13,224.00	13,125.00		26,349.00
Total Purchased Professional and Technical Services	\$13,224.00	\$13,125.00		\$26,349.00
500 <u>Other Purchased Services</u>				
510 Student Transportation Services		1,298.88		1,298.88
562 Tuition To Pennsylvania Charter Schools	16,817.69	65,707.66		82,525.35
563 Tuition To Nonpublic Schools		11,568.00		11,568.00
Total Other Purchased Services	\$16,817.69	\$78,574.54		\$95,392.23
600 <u>Supplies</u>				
610 General Supplies	984.34			984.34
Total Supplies	\$984.34			\$984.34
Total 1210 Life Skills Support	\$156,556.80	\$349,222.48	\$22,865.47	\$528,644.75

LEA : 114065503 Muhlenberg SD

Printed 1/3/2023 11:55:59 AM

General Fund (10)

1220 Sensory Support	Elementary	Secondary	Federal	Total
100 <u>Personnel Services – Salaries</u>				
100 Personnel Services – Salaries	74,820.97	28,718.27	26,117.20	129,656.44
Total Personnel Services – Salaries	\$74,820.97	\$28,718.27	\$26,117.20	\$129,656.44
200 <u>Personnel Services – Employee Benefits</u>				
210 Group Insurance – Contracted Provider	18,312.24	15,136.62		33,448.86
220 Social Security Contributions	7,577.12	2,033.30		9,610.42
230 PSERS Retirement Contributions	34,919.16	9,925.04		44,844.20
Total Personnel Services – Employee Benefits	\$60,808.52	\$27,094.96		\$87,903.48
300 <u>Purchased Professional and Technical Services</u>				
322 Professional Educational Services – Ius	66,511.95	165,179.79		231,691.74
330 Other Professional Services	35,595.72	35,595.72		71,191.44
Total Purchased Professional and Technical Services	\$102,107.67	\$200,775.51		\$302,883.18
400 <u>Purchased Property Services</u>				
430 Repairs and Maintenance Services	202.50	202.50		405.00
Total Purchased Property Services	\$202.50	\$202.50		\$405.00
500 <u>Other Purchased Services</u>				
562 Tuition To Pennsylvania Charter Schools	31,081.85			31,081.85
567 Tuition To Approved Private Schools (APS) and PA Chartered Schools for the Deaf and Blind		5,605.00		5,605.00
Total Other Purchased Services	\$31,081.85	\$5,605.00		\$36,686.85
600 <u>Supplies</u>				
610 General Supplies	1,252.89	601.61		1,854.50
650 Supplies & Fees – Technology Related	1,635.07	628.18		2,263.25
Total Supplies	\$2,887.96	\$1,229.79		\$4,117.75
700 <u>Property</u>				
752 Capital Equipment – Original and Additional			15,195.00	15,195.00
Total Property			\$15,195.00	\$15,195.00
800 <u>Other Objects</u>				
810 Dues and Fees	253.00			253.00
Total Other Objects	\$253.00			\$253.00
Total 1220 Sensory Support	\$272,162.47	\$263,626.03	\$41,312.20	\$577,100.70

LEA : 114065503 Muhlenberg SD

Printed 1/3/2023 11:55:59 AM

General Fund (10)

1230 Emotional Support

	<u>Elementary</u>	<u>Secondary</u>	<u>Federal</u>	<u>Total</u>
100 <u>Personnel Services – Salaries</u>				
100 Personnel Services – Salaries	1,276,880.75	1,188,236.99	456,778.62	2,921,896.36
Total Personnel Services – Salaries	\$1,276,880.75	\$1,188,236.99	\$456,778.62	\$2,921,896.36
200 <u>Personnel Services – Employee Benefits</u>				
210 Group Insurance – Contracted Provider	383,365.79	348,241.03	52,283.36	783,890.18
220 Social Security Contributions	102,733.75	105,085.11	7,562.35	215,381.21
230 PSERS Retirement Contributions	487,064.14	493,311.56	30,359.57	1,010,735.27
Total Personnel Services – Employee Benefits	\$973,163.68	\$946,637.70	\$90,205.28	\$2,010,006.66
300 <u>Purchased Professional and Technical Services</u>				
322 Professional Educational Services – Ius		163,584.60		163,584.60
323 Professional Educational Services – Other Educational Agencies		947.70		947.70
Total Purchased Professional and Technical Services		\$164,532.30		\$164,532.30
500 <u>Other Purchased Services</u>				
561 Tuition To Other School Districts Within the State		13,090.00		13,090.00
562 Tuition To Pennsylvania Charter Schools	6,216.19	174,870.56		181,086.75
563 Tuition To Nonpublic Schools	288,360.89	478,575.42		766,936.31
568 Tuition To Private Residential Rehabilitative Institutions (PRRI) [In-State] and Detention Centers	36,198.11	89,848.85		126,046.96
Total Other Purchased Services	\$330,775.19	\$756,384.83		\$1,087,160.02
600 <u>Supplies</u>				
610 General Supplies	4,701.96			4,701.96
640 Books and Periodicals	1,510.73			1,510.73
Total Supplies	\$6,212.69			\$6,212.69
Total 1230 Emotional Support	\$2,587,032.31	\$3,055,791.82	\$546,983.90	\$6,189,808.03

LEA : 114065503 Muhlenberg SD

Printed 1/3/2023 11:55:59 AM

General Fund (10)

1240 Academic Support

	<u>Elementary</u>	<u>Secondary</u>	<u>Federal</u>	<u>Total</u>
100 <u>Personnel Services – Salaries</u>				
100 Personnel Services – Salaries	423,309.59	476,402.84	382,300.88	1,282,013.31
Total Personnel Services – Salaries	\$423,309.59	\$476,402.84	\$382,300.88	\$1,282,013.31
200 <u>Personnel Services – Employee Benefits</u>				
210 Group Insurance – Contracted Provider	128,847.94	114,694.40	20,336.68	263,879.02
220 Social Security Contributions	42,828.15	44,629.11	7,626.98	95,084.24
230 PSERS Retirement Contributions	200,464.18	207,490.21	36,923.40	444,877.79
Total Personnel Services – Employee Benefits	\$372,140.27	\$366,813.72	\$64,887.06	\$803,841.05
300 <u>Purchased Professional and Technical Services</u>				
322 Professional Educational Services – Ius		8,653.06		8,653.06
329 Professional Educational Services – Other		13,226.60		13,226.60
Total Purchased Professional and Technical Services		\$21,879.66		\$21,879.66
500 <u>Other Purchased Services</u>				
562 Tuition To Pennsylvania Charter Schools	74,019.27	319,051.61		393,070.88
580 Travel	26.70	31.98		58.68
Total Other Purchased Services	\$74,045.97	\$319,083.59		\$393,129.56
600 <u>Supplies</u>				
610 General Supplies	4,814.27		35,726.46	40,540.73
640 Books and Periodicals	266.39	1,216.17		1,482.56
650 Supplies & Fees – Technology Related		2,020.72		2,020.72
Total Supplies	\$5,080.66	\$3,236.89	\$35,726.46	\$44,044.01
Total 1240 Academic Support	\$874,576.49	\$1,187,416.70	\$482,914.40	\$2,544,907.59

LEA : 114065503 Muhlenberg SD

Printed 1/3/2023 11:55:59 AM

General Fund (10)

1241 Learning Support – Public	Elementary	Secondary	Federal	Total
100 Personnel Services – Salaries				
100 Personnel Services – Salaries	423,309.59	404,587.33	285,865.40	1,113,762.32
Total Personnel Services – Salaries	\$423,309.59	\$404,587.33	\$285,865.40	\$1,113,762.32
200 Personnel Services – Employee Benefits				
210 Group Insurance – Contracted Provider	111,293.91	107,129.22	20,336.68	238,759.81
220 Social Security Contributions	38,082.95	39,227.38	5,136.44	82,446.77
230 PSERS Retirement Contributions	178,601.14	182,464.72	25,448.48	386,514.34
Total Personnel Services – Employee Benefits	\$327,978.00	\$328,821.32	\$50,921.60	\$707,720.92
300 Purchased Professional and Technical Services				
322 Professional Educational Services – Ius		8,653.06		8,653.06
329 Professional Educational Services – Other		13,226.60		13,226.60
Total Purchased Professional and Technical Services		\$21,879.66		\$21,879.66
500 Other Purchased Services				
562 Tuition To Pennsylvania Charter Schools	74,019.27	319,051.61		393,070.88
580 Travel	26.70	31.98		58.68
Total Other Purchased Services	\$74,045.97	\$319,083.59		\$393,129.56
600 Supplies				
610 General Supplies	4,814.27		35,726.46	40,540.73
640 Books and Periodicals	266.39	1,216.17		1,482.56
650 Supplies & Fees – Technology Related		2,020.72		2,020.72
Total Supplies	\$5,080.66	\$3,236.89	\$35,726.46	\$44,044.01
Total 1241 Learning Support – Public	\$830,414.22	\$1,077,608.79	\$372,513.46	\$2,280,536.47

LEA : 114065503 Muhlenberg SD

Printed 1/3/2023 11:55:59 AM

General Fund (10)

1243 Gifted Support

	<u>Elementary</u>	<u>Secondary</u>	<u>Federal</u>	<u>Total</u>
100 <u>Personnel Services – Salaries</u>				
100 Personnel Services – Salaries		71,815.51	96,435.48	168,250.99
Total Personnel Services – Salaries		\$71,815.51	\$96,435.48	\$168,250.99
200 <u>Personnel Services – Employee Benefits</u>				
210 Group Insurance – Contracted Provider	17,554.03	7,565.18		25,119.21
220 Social Security Contributions	4,745.20	5,401.73	2,490.54	12,637.47
230 PSERS Retirement Contributions	21,863.04	25,025.49	11,474.92	58,363.45
Total Personnel Services – Employee Benefits	\$44,162.27	\$37,992.40	\$13,965.46	\$96,120.13
Total 1243 Gifted Support	\$44,162.27	\$109,807.91	\$110,400.94	\$264,371.12

LEA : 114065503 Muhlenberg SD

Printed 1/3/2023 11:55:59 AM

General Fund (10)

1270 Multi-Handicapped Support

	<u>Elementary</u>	<u>Secondary</u>	<u>Federal</u>	<u>Total</u>
300 <u>Purchased Professional and Technical Services</u>				
322 Professional Educational Services – lus	5,241.89			5,241.89
Total Purchased Professional and Technical Services	\$5,241.89			\$5,241.89
Total 1270 Multi-Handicapped Support	\$5,241.89			\$5,241.89

LEA : 114065503 Muhlenberg SD

Printed 1/3/2023 11:55:59 AM

General Fund (10)

1280 Early Intervention Support

	<u>Elementary</u>	<u>Secondary</u>	<u>Federal</u>	<u>Total</u>
300 <u>Purchased Professional and Technical Services</u>				
322 Professional Educational Services – lus	12,127.00		9,129.00	21,256.00
Total Purchased Professional and Technical Services	\$12,127.00		\$9,129.00	\$21,256.00
Total 1280 Early Intervention Support	\$12,127.00		\$9,129.00	\$21,256.00

LEA : 114065503 Muhlenberg SD

Printed 1/3/2023 11:55:59 AM

General Fund (10)				
1290 Special Programs - Other Support	<u>Elementary</u>	<u>Secondary</u>	<u>Federal</u>	<u>Total</u>
100 <u>Personnel Services – Salaries</u>				
100 Personnel Services – Salaries	10,266.94	10,266.95	51,663.19	72,197.08
Total Personnel Services – Salaries	\$10,266.94	\$10,266.95	\$51,663.19	\$72,197.08
200 <u>Personnel Services – Employee Benefits</u>				
210 Group Insurance – Contracted Provider	5,802.19	5,802.20	8,199.21	19,803.60
220 Social Security Contributions	2,170.04	2,170.02	1,057.93	5,397.99
230 PSERS Retirement Contributions	11,350.63	11,350.64	2,508.90	25,210.17
250 Unemployment Compensation	2,602.28	2,602.28		5,204.56
260 Workers' Compensation	21,030.16	21,030.17		42,060.33
Total Personnel Services – Employee Benefits	\$42,955.30	\$42,955.31	\$11,766.04	\$97,676.65
300 <u>Purchased Professional and Technical Services</u>				
329 Professional Educational Services – Other	5,099.10	248.40		5,347.50
Total Purchased Professional and Technical Services	\$5,099.10	\$248.40		\$5,347.50
500 <u>Other Purchased Services</u>				
567 Tuition To Approved Private Schools (APS) and PA Chartered Schools for the Deaf and Blind		84,488.76		84,488.76
Total Other Purchased Services		\$84,488.76		\$84,488.76
800 <u>Other Objects</u>				
890 Miscellaneous Expenditures	160.30			160.30
Total Other Objects	\$160.30			\$160.30
Total 1290 Special Programs - Other Support	\$58,481.64	\$137,959.42	\$63,429.23	\$259,870.29

LEA : 114065503 Muhlenberg SD

Printed 1/3/2023 11:55:59 AM

General Fund (10)

1300 Vocational Education

	<u>Elementary</u>	<u>Secondary</u>	<u>Federal</u>	<u>Total</u>
500 <u>Other Purchased Services</u>				
564 Tuition To Career and Technology Centers		2,265,815.77		2,265,815.77
Total Other Purchased Services		\$2,265,815.77		\$2,265,815.77
Total 1300 Vocational Education		\$2,265,815.77		\$2,265,815.77

LEA : 114065503 Muhlenberg SD

Printed 1/3/2023 11:55:59 AM

General Fund (10)

1400 Other Instructional Programs – Elementary / Secondary	Elementary	Secondary	Federal	Total
100 <u>Personnel Services – Salaries</u>				
100 Personnel Services – Salaries		206,971.51	809,844.10	1,016,815.61
Total Personnel Services – Salaries		\$206,971.51	\$809,844.10	\$1,016,815.61
200 <u>Personnel Services – Employee Benefits</u>				
210 Group Insurance – Contracted Provider		39,582.09	23,849.24	63,431.33
220 Social Security Contributions	19,885.87	32,749.01	23,679.98	76,314.86
230 PSERS Retirement Contributions	75,516.45	135,682.50	91,099.48	302,298.43
250 Unemployment Compensation		193.79	110.74	304.53
260 Workers' Compensation		1,566.08	894.90	2,460.98
Total Personnel Services – Employee Benefits	\$95,402.32	\$209,773.47	\$139,634.34	\$444,810.13
300 <u>Purchased Professional and Technical Services</u>				
390 Other Purchased Professional and Technical Services			1,000.00	1,000.00
Total Purchased Professional and Technical Services			\$1,000.00	\$1,000.00
400 <u>Purchased Property Services</u>				
430 Repairs and Maintenance Services		240.82	3,329.95	3,570.77
440 Rentals		4,192.08	2,033.10	6,225.18
Total Purchased Property Services		\$4,432.90	\$5,363.05	\$9,795.95
500 <u>Other Purchased Services</u>				
510 Student Transportation Services			127,718.29	127,718.29
561 Tuition To Other School Districts Within the State		18,570.11		18,570.11
580 Travel			983.76	983.76
Total Other Purchased Services		\$18,570.11	\$128,702.05	\$147,272.16
600 <u>Supplies</u>				
610 General Supplies			27,257.51	27,257.51
630 Food			50,554.50	50,554.50
Total Supplies			\$77,812.01	\$77,812.01
800 <u>Other Objects</u>				
810 Dues and Fees		800.00		800.00
890 Miscellaneous Expenditures		1,818.00	8,240.17	10,058.17
Total Other Objects		\$2,618.00	\$8,240.17	\$10,858.17
Total 1400 Other Instructional Programs – Elementary / Secondary	\$95,402.32	\$442,365.99	\$1,170,595.72	\$1,708,364.03

LEA : 114065503 Muhlenberg SD

Printed 1/3/2023 11:55:59 AM

General Fund (10)

1410 Drivers' Education

	<u>Elementary</u>	<u>Secondary</u>	<u>Federal</u>	<u>Total</u>
100 <u>Personnel Services – Salaries</u>				
100 Personnel Services – Salaries		82,006.97		82,006.97
Total Personnel Services – Salaries		\$82,006.97		\$82,006.97
200 <u>Personnel Services – Employee Benefits</u>				
210 Group Insurance – Contracted Provider		9,077.73		9,077.73
220 Social Security Contributions		6,177.62		6,177.62
230 PSERS Retirement Contributions		28,135.74		28,135.74
250 Unemployment Compensation		55.37		55.37
260 Workers' Compensation		447.45		447.45
Total Personnel Services – Employee Benefits		\$43,893.91		\$43,893.91
400 <u>Purchased Property Services</u>				
430 Repairs and Maintenance Services		240.82		240.82
440 Rentals		4,192.08		4,192.08
Total Purchased Property Services		\$4,432.90		\$4,432.90
Total 1410 Drivers' Education		\$130,333.78		\$130,333.78

LEA : 114065503 Muhlenberg SD

Printed 1/3/2023 11:55:59 AM

General Fund (10)				
1420 Summer School	<u>Elementary</u>	<u>Secondary</u>	<u>Federal</u>	<u>Total</u>
100 <u>Personnel Services – Salaries</u>				
100 Personnel Services – Salaries			526,487.50	526,487.50
Total Personnel Services – Salaries			\$526,487.50	\$526,487.50
200 <u>Personnel Services – Employee Benefits</u>				
220 Social Security Contributions	13,505.99	13,505.99	12,985.68	39,997.66
230 PSERS Retirement Contributions	45,537.56	45,537.56	41,828.12	132,903.24
Total Personnel Services – Employee Benefits	\$59,043.55	\$59,043.55	\$54,813.80	\$172,900.90
500 <u>Other Purchased Services</u>				
510 Student Transportation Services			109,270.08	109,270.08
Total Other Purchased Services			\$109,270.08	\$109,270.08
600 <u>Supplies</u>				
610 General Supplies			21,552.57	21,552.57
630 Food			365.00	365.00
Total Supplies			\$21,917.57	\$21,917.57
Total 1420 Summer School	\$59,043.55	\$59,043.55	\$712,488.95	\$830,576.05

LEA : 114065503 Muhlenberg SD

Printed 1/3/2023 11:55:59 AM

General Fund (10)

1440 Alternative Regular Education Programs	<u>Elementary</u>	<u>Secondary</u>	<u>Federal</u>	<u>Total</u>
100 <u>Personnel Services – Salaries</u>				
100 Personnel Services – Salaries		124,964.54		124,964.54
Total Personnel Services – Salaries		\$124,964.54		\$124,964.54
200 <u>Personnel Services – Employee Benefits</u>				
210 Group Insurance – Contracted Provider		30,504.36		30,504.36
220 Social Security Contributions		9,039.31		9,039.31
230 PSERS Retirement Contributions		43,013.26		43,013.26
250 Unemployment Compensation		138.42		138.42
260 Workers' Compensation		1,118.63		1,118.63
Total Personnel Services – Employee Benefits		\$83,813.98		\$83,813.98
500 <u>Other Purchased Services</u>				
561 Tuition To Other School Districts Within the State		18,570.11		18,570.11
Total Other Purchased Services		\$18,570.11		\$18,570.11
800 <u>Other Objects</u>				
810 Dues and Fees		800.00		800.00
Total Other Objects		\$800.00		\$800.00
Total 1440 Alternative Regular Education Programs		\$228,148.63		\$228,148.63

LEA : 114065503 Muhlenberg SD

Printed 1/3/2023 11:55:59 AM

General Fund (10)

1441 Adjudicated / Court-Placed Programs

Elementary Secondary Federal Total

500 Other Purchased Services

561 Tuition To Other School Districts Within the State 18,570.11 18,570.11

Total Other Purchased Services \$18,570.11 \$18,570.11

Total 1441 Adjudicated / Court-Placed Programs \$18,570.11 \$18,570.11

LEA : 114065503 Muhlenberg SD

Printed 1/3/2023 11:55:59 AM

General Fund (10)

1442 Alternative Education Programs	<u>Elementary</u>	<u>Secondary</u>	<u>Federal</u>	<u>Total</u>
100 <u>Personnel Services – Salaries</u>				
100 Personnel Services – Salaries		124,964.54		124,964.54
Total Personnel Services – Salaries		\$124,964.54		\$124,964.54
200 <u>Personnel Services – Employee Benefits</u>				
210 Group Insurance – Contracted Provider		30,504.36		30,504.36
220 Social Security Contributions		9,039.31		9,039.31
230 PSERS Retirement Contributions		43,013.26		43,013.26
250 Unemployment Compensation		138.42		138.42
260 Workers' Compensation		1,118.63		1,118.63
Total Personnel Services – Employee Benefits		\$83,813.98		\$83,813.98
800 <u>Other Objects</u>				
810 Dues and Fees		800.00		800.00
Total Other Objects		\$800.00		\$800.00
Total 1442 Alternative Education Programs		\$209,578.52		\$209,578.52

LEA : 114065503 Muhlenberg SD

Printed 1/3/2023 11:55:59 AM

General Fund (10)				
1450 Instructional Programs Outside the Established School Day	<u>Elementary</u>	<u>Secondary</u>	<u>Federal</u>	<u>Total</u>
100 <u>Personnel Services – Salaries</u>				
100 Personnel Services – Salaries			141,012.50	141,012.50
Total Personnel Services – Salaries			\$141,012.50	\$141,012.50
200 <u>Personnel Services – Employee Benefits</u>				
220 Social Security Contributions	6,379.88	4,026.09	62.09	10,468.06
230 PSERS Retirement Contributions	29,978.89	18,995.94	294.34	49,269.17
Total Personnel Services – Employee Benefits	\$36,358.77	\$23,022.03	\$356.43	\$59,737.23
500 <u>Other Purchased Services</u>				
510 Student Transportation Services			9,351.29	9,351.29
Total Other Purchased Services			\$9,351.29	\$9,351.29
600 <u>Supplies</u>				
610 General Supplies			228.46	228.46
630 Food			50,189.50	50,189.50
Total Supplies			\$50,417.96	\$50,417.96
Total 1450 Instructional Programs Outside the Established School Day	\$36,358.77	\$23,022.03	\$201,138.18	\$260,518.98

LEA : 114065503 Muhlenberg SD

Printed 1/3/2023 11:55:59 AM

General Fund (10)

1490 Additional Other Instructional Programs

	<u>Elementary</u>	<u>Secondary</u>	<u>Federal</u>	<u>Total</u>
100 <u>Personnel Services – Salaries</u>				
100 Personnel Services – Salaries			142,344.10	142,344.10
Total Personnel Services – Salaries			\$142,344.10	\$142,344.10
200 <u>Personnel Services – Employee Benefits</u>				
210 Group Insurance – Contracted Provider			23,849.24	23,849.24
220 Social Security Contributions			10,632.21	10,632.21
230 PSERS Retirement Contributions			48,977.02	48,977.02
250 Unemployment Compensation			110.74	110.74
260 Workers' Compensation			894.90	894.90
Total Personnel Services – Employee Benefits			\$84,464.11	\$84,464.11
300 <u>Purchased Professional and Technical Services</u>				
390 Other Purchased Professional and Technical Services			1,000.00	1,000.00
Total Purchased Professional and Technical Services			\$1,000.00	\$1,000.00
400 <u>Purchased Property Services</u>				
430 Repairs and Maintenance Services			3,329.95	3,329.95
440 Rentals			2,033.10	2,033.10
Total Purchased Property Services			\$5,363.05	\$5,363.05
500 <u>Other Purchased Services</u>				
510 Student Transportation Services			9,096.92	9,096.92
580 Travel			983.76	983.76
Total Other Purchased Services			\$10,080.68	\$10,080.68
600 <u>Supplies</u>				
610 General Supplies			5,476.48	5,476.48
Total Supplies			\$5,476.48	\$5,476.48
800 <u>Other Objects</u>				
890 Miscellaneous Expenditures		1,818.00	8,240.17	10,058.17
Total Other Objects		\$1,818.00	\$8,240.17	\$10,058.17
Total 1490 Additional Other Instructional Programs		\$1,818.00	\$256,968.59	\$258,786.59

LEA : 114065503 Muhlenberg SD

Printed 1/3/2023 11:55:59 AM

General Fund (10)				
1500 Nonpublic School Programs	<u>Elementary</u>	<u>Secondary</u>	<u>Federal</u>	<u>Total</u>
100 <u>Personnel Services – Salaries</u>				
100 Personnel Services – Salaries			830.44	830.44
Total Personnel Services – Salaries			\$830.44	\$830.44
300 <u>Purchased Professional and Technical Services</u>				
322 Professional Educational Services – Ius			22,812.49	22,812.49
Total Purchased Professional and Technical Services			\$22,812.49	\$22,812.49
600 <u>Supplies</u>				
610 General Supplies			1,539.20	1,539.20
Total Supplies			\$1,539.20	\$1,539.20
Total 1500 Nonpublic School Programs			\$25,182.13	\$25,182.13

LEA : 114065503 Muhlenberg SD

Printed 1/3/2023 11:56:02 AM

General Fund (10)

2000 Support Services

Total

100	<u>Personnel Services – Salaries</u>	
100	Personnel Services – Salaries	7,923,187.13
Total Personnel Services – Salaries		\$7,923,187.13
200	<u>Personnel Services – Employee Benefits</u>	
210	Group Insurance – Contracted Provider	2,007,477.18
220	Social Security Contributions	582,026.23
230	PSERS Retirement Contributions	2,698,848.10
240	Tuition Reimbursement	114,016.00
250	Unemployment Compensation	6,782.57
260	Workers' Compensation	54,812.66
Total Personnel Services – Employee Benefits		\$5,463,962.74
300	<u>Purchased Professional and Technical Services</u>	
310	Official / Administrative Services	1,500.00
322	Professional Educational Services – lus	1,500.00
330	Other Professional Services	488,233.48
340	Technical Services	99,122.73
350	Security / Safety Services	64,802.88
360	Employee Training and Development Services	83,862.30
390	Other Purchased Professional and Technical Services	31,633.27
Total Purchased Professional and Technical Services		\$770,654.66
400	<u>Purchased Property Services</u>	
410	Cleaning Services	58,954.52
420	Utility Services	79,780.61
430	Repairs and Maintenance Services	445,626.29
440	Rentals	28,469.45
460	Extermination Services	28,876.10
490	Other Purchased Property Services	4,568.90
Total Purchased Property Services		\$646,275.87
500	<u>Other Purchased Services</u>	
511	Student Transportation Services from Another LEA Within the State	2,112,453.53
516	Student Transportation Services From the IU	225,750.05
520	Insurance – General	32,297.25
522	Automotive Liability Insurance	7,206.00
523	General Property and Liability Insurance	135,902.00
529	Other Insurance	11,990.00
530	Communications	104,965.46
549	Other Advertising/Public Relations	1,448.18
550	Printing and Binding	14,994.34
580	Travel	6,207.18
591	Services Purchased Locally	480.00
595	IU Payments By Withholding	42,565.91
Total Other Purchased Services		\$2,696,259.90
600	<u>Supplies</u>	
610	General Supplies	326,551.66

LEA : 114065503 Muhlenberg SD

Printed 1/3/2023 11:56:02 AM

General Fund (10)

2000 Support Services

Total

600	<u>Supplies</u>	
620	Energy	535,294.69
630	Food	10,729.25
640	Books and Periodicals	9,105.46
650	Supplies & Fees – Technology Related	532,530.75
Total Supplies		\$1,414,211.81
700	<u>Property</u>	
752	Capital Equipment – Original and Additional	48,334.80
762	Capitalized Equipment - Replacement	48,863.74
766	Capitalized Technology Equipment – Replacement	363,764.79
Total Property		\$460,963.33
800	<u>Other Objects</u>	
810	Dues and Fees	39,926.00
890	Miscellaneous Expenditures	308.69
Total Other Objects		\$40,234.69
Total 2000 Support Services		\$19,415,750.13

LEA : 114065503 Muhlenberg SD

Printed 1/3/2023 11:56:02 AM

General Fund (10)

2100 Support Services – Students	Elementary	Secondary	Federal	Total
100 <u>Personnel Services – Salaries</u>				
100 Personnel Services – Salaries	590,692.94	994,814.12		1,632,695.52
Total Personnel Services – Salaries	\$590,692.94	\$994,814.12		\$1,632,695.52
200 <u>Personnel Services – Employee Benefits</u>				
210 Group Insurance – Contracted Provider	172,164.15	165,250.51		340,727.50
220 Social Security Contributions	43,144.44	73,446.82		120,184.51
230 PSERS Retirement Contributions	206,038.60	341,107.13		563,318.94
250 Unemployment Compensation	553.67	609.05		1,273.46
260 Workers' Compensation	4,474.49	4,921.96		10,291.35
Total Personnel Services – Employee Benefits	\$426,375.35	\$585,335.47		\$1,035,795.76
300 <u>Purchased Professional and Technical Services</u>				
330 Other Professional Services	21,596.50	20,746.50	450.00	42,793.00
340 Technical Services	40,617.25	40,617.25		81,234.50
390 Other Purchased Professional and Technical Services	1,315.00	1,315.00		2,630.00
Total Purchased Professional and Technical Services	\$63,528.75	\$62,678.75	\$450.00	\$126,657.50
600 <u>Supplies</u>				
610 General Supplies	7,399.09	990.94		8,390.03
630 Food		188.52		188.52
640 Books and Periodicals	141.56			141.56
650 Supplies & Fees – Technology Related	127.50	4,765.00	6,680.02	11,572.52
Total Supplies	\$7,668.15	\$5,944.46	\$6,680.02	\$20,292.63
800 <u>Other Objects</u>				
810 Dues and Fees	295.00			295.00
Total Other Objects	\$295.00			\$295.00
Total 2100 Support Services – Students	\$1,088,560.19	\$1,648,772.80	\$7,130.02	\$2,815,736.41

LEA : 114065503 Muhlenberg SD

Printed 1/3/2023 11:56:02 AM

General Fund (10)

2110 Supervision of Student Services	<u>Elementary</u>	<u>Secondary</u>	<u>Federal</u>	<u>Total</u>
100 <u>Personnel Services – Salaries</u>				
100 Personnel Services – Salaries	93,770.18			93,770.18
Total Personnel Services – Salaries	\$93,770.18			\$93,770.18
200 <u>Personnel Services – Employee Benefits</u>				
210 Group Insurance – Contracted Provider	52.56			52.56
220 Social Security Contributions	7,173.31			7,173.31
230 PSERS Retirement Contributions	32,502.56			32,502.56
250 Unemployment Compensation	27.68	27.69		55.37
260 Workers' Compensation	223.72	223.73		447.45
Total Personnel Services – Employee Benefits	\$39,979.83	\$251.42		\$40,231.25
Total 2110 Supervision of Student Services	\$133,750.01	\$251.42		\$134,001.43

LEA : 114065503 Muhlenberg SD

Printed 1/3/2023 11:56:02 AM

General Fund (10)

2111 Supervision of Student Services – Head of Component	<u>Elementary</u>	<u>Secondary</u>	<u>Federal</u>	<u>Total</u>
100 <u>Personnel Services – Salaries</u>				
100 Personnel Services – Salaries	93,770.18			93,770.18
Total Personnel Services – Salaries	\$93,770.18			\$93,770.18
200 <u>Personnel Services – Employee Benefits</u>				
210 Group Insurance – Contracted Provider	52.56			52.56
220 Social Security Contributions	7,173.31			7,173.31
230 PSERS Retirement Contributions	32,502.56			32,502.56
250 Unemployment Compensation	27.68	27.69		55.37
260 Workers' Compensation	223.72	223.73		447.45
Total Personnel Services – Employee Benefits	\$39,979.83	\$251.42		\$40,231.25
Total 2111 Supervision of Student Services – Head of Component	\$133,750.01	\$251.42		\$134,001.43

LEA : 114065503 Muhlenberg SD

Printed 1/3/2023 11:56:02 AM

General Fund (10)

2120 Guidance Services	Elementary	Secondary	Federal	Total
100 Personnel Services – Salaries				
100 Personnel Services – Salaries	415,125.76	844,594.26		1,259,720.02
Total Personnel Services – Salaries	\$415,125.76	\$844,594.26		\$1,259,720.02
200 Personnel Services – Employee Benefits				
210 Group Insurance – Contracted Provider	120,180.65	146,001.69		266,182.34
220 Social Security Contributions	29,980.16	62,485.06		92,465.22
230 PSERS Retirement Contributions	144,956.08	288,861.66		433,817.74
250 Unemployment Compensation	442.94	498.31		941.25
260 Workers' Compensation	3,579.60	4,027.05		7,606.65
Total Personnel Services – Employee Benefits	\$299,139.43	\$501,873.77		\$801,013.20
300 Purchased Professional and Technical Services				
340 Technical Services	40,617.25	40,617.25		81,234.50
390 Other Purchased Professional and Technical Services	1,315.00	1,315.00		2,630.00
Total Purchased Professional and Technical Services	\$41,932.25	\$41,932.25		\$83,864.50
600 Supplies				
610 General Supplies	6,851.72	525.57		7,377.29
630 Food		188.52		188.52
640 Books and Periodicals	141.56			141.56
650 Supplies & Fees – Technology Related		4,680.00		4,680.00
Total Supplies	\$6,993.28	\$5,394.09		\$12,387.37
Total 2120 Guidance Services	\$763,190.72	\$1,393,794.37		\$2,156,985.09

LEA : 114065503 Muhlenberg SD

Printed 1/3/2023 11:56:02 AM

General Fund (10)

2140 Psychological Services	Elementary	Secondary	Federal	Total
100 <u>Personnel Services – Salaries</u>				
100 Personnel Services – Salaries	81,797.00	150,219.86		232,016.86
Total Personnel Services – Salaries	\$81,797.00	\$150,219.86		\$232,016.86
200 <u>Personnel Services – Employee Benefits</u>				
210 Group Insurance – Contracted Provider	51,930.94	19,248.82		71,179.76
220 Social Security Contributions	5,990.97	10,961.76		16,952.73
230 PSERS Retirement Contributions	28,579.96	52,245.47		80,825.43
250 Unemployment Compensation	83.05	83.05		166.10
260 Workers' Compensation	671.17	671.18		1,342.35
Total Personnel Services – Employee Benefits	\$87,256.09	\$83,210.28		\$170,466.37
300 <u>Purchased Professional and Technical Services</u>				
330 Other Professional Services	1,700.00	850.00	450.00	3,000.00
Total Purchased Professional and Technical Services	\$1,700.00	\$850.00	\$450.00	\$3,000.00
600 <u>Supplies</u>				
610 General Supplies	547.37	465.37		1,012.74
650 Supplies & Fees – Technology Related	127.50	85.00	6,680.02	6,892.52
Total Supplies	\$674.87	\$550.37	\$6,680.02	\$7,905.26
800 <u>Other Objects</u>				
810 Dues and Fees	295.00			295.00
Total Other Objects	\$295.00			\$295.00
Total 2140 Psychological Services	\$171,722.96	\$234,830.51	\$7,130.02	\$413,683.49

LEA : 114065503 Muhlenberg SD

Printed 1/3/2023 11:56:02 AM

General Fund (10)

2160 Social Work Services

Elementary Secondary Federal Total

100 <u>Personnel Services – Salaries</u>				
100 Personnel Services – Salaries				47,188.46
Total Personnel Services – Salaries				\$47,188.46
200 <u>Personnel Services – Employee Benefits</u>				
210 Group Insurance – Contracted Provider				3,312.84
220 Social Security Contributions				3,593.25
230 PSERS Retirement Contributions				16,173.21
250 Unemployment Compensation				110.74
260 Workers' Compensation				894.90
Total Personnel Services – Employee Benefits				\$24,084.94
Total 2160 Social Work Services				\$71,273.40

LEA : 114065503 Muhlenberg SD

Printed 1/3/2023 11:56:02 AM

General Fund (10)

2190 Other Student Services	<u>Elementary</u>	<u>Secondary</u>	<u>Federal</u>	<u>Total</u>
300 <u>Purchased Professional and Technical Services</u>				
330 Other Professional Services	19,896.50	19,896.50		39,793.00
Total Purchased Professional and Technical Services	\$19,896.50	\$19,896.50		\$39,793.00
Total 2190 Other Student Services	\$19,896.50	\$19,896.50		\$39,793.00

LEA : 114065503 Muhlenberg SD

Printed 1/3/2023 11:56:02 AM

General Fund (10)

2200 Support Services – Instructional Staff	Elementary	Secondary	Federal	Total
100 <u>Personnel Services – Salaries</u>				
100 Personnel Services – Salaries	423,579.53	308,833.13	271,855.28	1,004,267.94
Total Personnel Services – Salaries	\$423,579.53	\$308,833.13	\$271,855.28	\$1,004,267.94
200 <u>Personnel Services – Employee Benefits</u>				
210 Group Insurance – Contracted Provider	87,646.08	87,862.05	42,463.74	217,971.87
220 Social Security Contributions	41,375.70	30,883.48	2,044.78	74,303.96
230 PSERS Retirement Contributions	190,505.83	137,999.24	10,017.59	338,522.66
240 Tuition Reimbursement	45,330.00	39,950.00		85,280.00
250 Unemployment Compensation	332.21	332.21		664.42
260 Workers' Compensation	2,684.69	2,684.71		5,369.40
Total Personnel Services – Employee Benefits	\$367,874.51	\$299,711.69	\$54,526.11	\$722,112.31
300 <u>Purchased Professional and Technical Services</u>				
322 Professional Educational Services – Ius			1,500.00	1,500.00
340 Technical Services	50.00	50.00		100.00
360 Employee Training and Development Services	2,070.00	2,860.00	65,485.80	70,415.80
Total Purchased Professional and Technical Services	\$2,120.00	\$2,910.00	\$66,985.80	\$72,015.80
400 <u>Purchased Property Services</u>				
430 Repairs and Maintenance Services	636.17	636.18		1,272.35
Total Purchased Property Services	\$636.17	\$636.18		\$1,272.35
500 <u>Other Purchased Services</u>				
530 Communications	1,034.49	1,034.49		2,068.98
580 Travel	518.50	313.74	500.00	1,332.24
591 Services Purchased Locally	20.00	20.00		40.00
Total Other Purchased Services	\$1,572.99	\$1,368.23	\$500.00	\$3,441.22
600 <u>Supplies</u>				
610 General Supplies	1,309.44	845.19	7,870.15	10,024.78
640 Books and Periodicals	6,219.10	2,744.80		8,963.90
650 Supplies & Fees – Technology Related	5,063.57	7,232.95	1,483.95	13,780.47
Total Supplies	\$12,592.11	\$10,822.94	\$9,354.10	\$32,769.15
Total 2200 Support Services – Instructional Staff	\$808,375.31	\$624,282.17	\$403,221.29	\$1,835,878.77

LEA : 114065503 Muhlenberg SD

Printed 1/3/2023 11:56:02 AM

General Fund (10)

2250 School Library Services	<u>Elementary</u>	<u>Secondary</u>	<u>Federal</u>	<u>Total</u>
100 <u>Personnel Services – Salaries</u>				
100 Personnel Services – Salaries	109,430.56	13,090.33		122,520.89
Total Personnel Services – Salaries	\$109,430.56	\$13,090.33		\$122,520.89
200 <u>Personnel Services – Employee Benefits</u>				
210 Group Insurance – Contracted Provider	1,565.11			1,565.11
220 Social Security Contributions	8,292.00	1,001.42		9,293.42
230 PSERS Retirement Contributions	38,144.52			38,144.52
250 Unemployment Compensation	55.37	55.37		110.74
260 Workers' Compensation	447.45	447.45		894.90
Total Personnel Services – Employee Benefits	\$48,504.45	\$1,504.24		\$50,008.69
600 <u>Supplies</u>				
610 General Supplies	492.40	3.00		495.40
640 Books and Periodicals	3,444.30	(30.00)		3,414.30
650 Supplies & Fees – Technology Related	1,094.37	3,263.76		4,358.13
Total Supplies	\$5,031.07	\$3,236.76		\$8,267.83
Total 2250 School Library Services	\$162,966.08	\$17,831.33		\$180,797.41

LEA : 114065503 Muhlenberg SD

Printed 1/3/2023 11:56:02 AM

General Fund (10)

2260 Instruction and Curriculum Development Services	<u>Elementary</u>	<u>Secondary</u>	<u>Federal</u>	<u>Total</u>
100 <u>Personnel Services – Salaries</u>				
100 Personnel Services – Salaries	195,676.62	193,890.64	16,764.00	406,331.26
Total Personnel Services – Salaries	\$195,676.62	\$193,890.64	\$16,764.00	\$406,331.26
200 <u>Personnel Services – Employee Benefits</u>				
210 Group Insurance – Contracted Provider	54,716.23	54,716.24		109,432.47
220 Social Security Contributions	15,272.45	15,138.98		30,411.43
230 PSERS Retirement Contributions	67,877.28	67,876.89		135,754.17
250 Unemployment Compensation	138.42	138.42		276.84
260 Workers' Compensation	1,118.62	1,118.63		2,237.25
Total Personnel Services – Employee Benefits	\$139,123.00	\$138,989.16		\$278,112.16
300 <u>Purchased Professional and Technical Services</u>				
340 Technical Services	50.00	50.00		100.00
Total Purchased Professional and Technical Services	\$50.00	\$50.00		\$100.00
400 <u>Purchased Property Services</u>				
430 Repairs and Maintenance Services	636.17	636.18		1,272.35
Total Purchased Property Services	\$636.17	\$636.18		\$1,272.35
500 <u>Other Purchased Services</u>				
530 Communications	1,034.49	1,034.49		2,068.98
580 Travel	6.43	6.44		12.87
591 Services Purchased Locally	20.00	20.00		40.00
Total Other Purchased Services	\$1,060.92	\$1,060.93		\$2,121.85
600 <u>Supplies</u>				
610 General Supplies	753.19	753.20		1,506.39
650 Supplies & Fees – Technology Related	2,760.00	2,760.00		5,520.00
Total Supplies	\$3,513.19	\$3,513.20		\$7,026.39
Total 2260 Instruction and Curriculum Development Services	\$340,059.90	\$338,140.11	\$16,764.00	\$694,964.01

LEA : 114065503 Muhlenberg SD

Printed 1/3/2023 11:56:02 AM

General Fund (10)				
2270 Instructional Staff Professional Development Services	<u>Elementary</u>	<u>Secondary</u>	<u>Federal</u>	<u>Total</u>
100 <u>Personnel Services – Salaries</u>				
100 Personnel Services – Salaries	118,472.35	101,852.16	255,091.28	475,415.79
Total Personnel Services – Salaries	\$118,472.35	\$101,852.16	\$255,091.28	\$475,415.79
200 <u>Personnel Services – Employee Benefits</u>				
210 Group Insurance – Contracted Provider	31,364.74	33,145.81	42,463.74	106,974.29
220 Social Security Contributions	17,811.25	14,743.08	2,044.78	34,599.11
230 PSERS Retirement Contributions	84,484.03	70,122.35	10,017.59	164,623.97
240 Tuition Reimbursement	45,330.00	39,950.00		85,280.00
250 Unemployment Compensation	138.42	138.42		276.84
260 Workers' Compensation	1,118.62	1,118.63		2,237.25
Total Personnel Services – Employee Benefits	\$180,247.06	\$159,218.29	\$54,526.11	\$393,991.46
300 <u>Purchased Professional and Technical Services</u>				
360 Employee Training and Development Services	2,070.00	2,860.00	65,485.80	70,415.80
Total Purchased Professional and Technical Services	\$2,070.00	\$2,860.00	\$65,485.80	\$70,415.80
500 <u>Other Purchased Services</u>				
580 Travel	512.07	307.30	500.00	1,319.37
Total Other Purchased Services	\$512.07	\$307.30	\$500.00	\$1,319.37
600 <u>Supplies</u>				
610 General Supplies	63.85	88.99		152.84
640 Books and Periodicals	2,774.80	2,774.80		5,549.60
650 Supplies & Fees – Technology Related	1,209.20	1,209.19		2,418.39
Total Supplies	\$4,047.85	\$4,072.98		\$8,120.83
Total 2270 Instructional Staff Professional Development Services	\$305,349.33	\$268,310.73	\$375,603.19	\$949,263.25

LEA : 114065503 Muhlenberg SD

Printed 1/3/2023 11:56:02 AM

General Fund (10)

2280 Nonpublic Support Services

	<u>Elementary</u>	<u>Secondary</u>	<u>Federal</u>	<u>Total</u>
300 <u>Purchased Professional and Technical Services</u>				
322 Professional Educational Services – Ius			1,500.00	1,500.00
Total Purchased Professional and Technical Services			\$1,500.00	\$1,500.00
600 <u>Supplies</u>				
610 General Supplies			7,870.15	7,870.15
650 Supplies & Fees – Technology Related			1,483.95	1,483.95
Total Supplies			\$9,354.10	\$9,354.10
Total 2280 Nonpublic Support Services			\$10,854.10	\$10,854.10

LEA : 114065503 Muhlenberg SD

Printed 1/3/2023 11:56:02 AM

General Fund (10)

2300 Support Services – Administration	Elementary	Secondary	Federal	Total
100 Personnel Services – Salaries				
100 Personnel Services – Salaries	772,378.33	902,256.97		2,240,077.10
Total Personnel Services – Salaries	\$772,378.33	\$902,256.97		\$2,240,077.10
200 Personnel Services – Employee Benefits				
210 Group Insurance – Contracted Provider	229,854.30	210,749.77		550,199.98
220 Social Security Contributions	56,668.74	67,403.75		161,311.47
230 PSERS Retirement Contributions	266,919.79	299,868.84		752,992.14
250 Unemployment Compensation	692.09	692.10		1,661.03
260 Workers' Compensation	5,593.13	5,593.13		13,423.51
Total Personnel Services – Employee Benefits	\$559,728.05	\$584,307.59		\$1,479,588.13
300 Purchased Professional and Technical Services				
310 Official / Administrative Services				1,500.00
330 Other Professional Services				229,217.25
340 Technical Services				8,896.33
390 Other Purchased Professional and Technical Services				12,513.50
Total Purchased Professional and Technical Services				\$252,127.08
400 Purchased Property Services				
430 Repairs and Maintenance Services	12,944.01	10,584.79		24,557.63
440 Rentals	1,641.36	4,281.30		17,687.89
Total Purchased Property Services	\$14,585.37	\$14,866.09		\$42,245.52
500 Other Purchased Services				
520 Insurance – General				32,297.25
530 Communications	5,647.78	9,028.09		14,842.85
549 Other Advertising/Public Relations				1,448.18
550 Printing and Binding	1,110.00	37.12		7,719.39
580 Travel		457.13		2,820.35
591 Services Purchased Locally	40.00	400.00		440.00
Total Other Purchased Services	\$6,797.78	\$9,922.34		\$59,568.02
600 Supplies				
610 General Supplies	26,474.94	6,171.21		38,571.85
630 Food	2,500.28	1,340.40		10,540.73
650 Supplies & Fees – Technology Related	2,160.96		1,218.00	11,748.96
Total Supplies	\$31,136.18	\$7,511.61	\$1,218.00	\$60,861.54
800 Other Objects				
810 Dues and Fees	3,064.00	1,263.11		37,767.86
890 Miscellaneous Expenditures				35.66
Total Other Objects	\$3,064.00	\$1,263.11		\$37,803.52
Total 2300 Support Services – Administration	\$1,387,689.71	\$1,520,127.71	\$1,218.00	\$4,172,270.91

LEA : 114065503 Muhlenberg SD

Printed 1/3/2023 11:56:02 AM

General Fund (10)				
2310 Board Services				
	<u>Elementary</u>	<u>Secondary</u>	<u>Federal</u>	<u>Total</u>
100 <u>Personnel Services – Salaries</u>				
100 Personnel Services – Salaries				475.00
Total Personnel Services – Salaries				\$475.00
200 <u>Personnel Services – Employee Benefits</u>				
220 Social Security Contributions				36.23
Total Personnel Services – Employee Benefits				\$36.23
500 <u>Other Purchased Services</u>				
520 Insurance – General				26,194.00
549 Other Advertising/Public Relations				1,448.18
550 Printing and Binding				239.25
580 Travel				90.00
Total Other Purchased Services				\$27,971.43
600 <u>Supplies</u>				
610 General Supplies				790.00
630 Food				175.00
Total Supplies				\$965.00
800 <u>Other Objects</u>				
810 Dues and Fees				17,497.54
Total Other Objects				\$17,497.54
Total 2310 Board Services				\$46,945.20

LEA : 114065503 Muhlenberg SD

Printed 1/3/2023 11:56:02 AM

General Fund (10)

2320 Board Treasurer Services	<u>Elementary</u>	<u>Secondary</u>	<u>Federal</u>	<u>Total</u>
300 <u>Purchased Professional and Technical Services</u>				
310 Official / Administrative Services				1,500.00
Total Purchased Professional and Technical Services				\$1,500.00
500 <u>Other Purchased Services</u>				
520 Insurance – General				100.00
Total Other Purchased Services				\$100.00
Total 2320 Board Treasurer Services				\$1,600.00

LEA : 114065503 Muhlenberg SD

Printed 1/3/2023 11:56:02 AM

General Fund (10)				
2330 Tax Assessment and Collection Services	<u>Elementary</u>	<u>Secondary</u>	<u>Federal</u>	<u>Total</u>
100 <u>Personnel Services – Salaries</u>				
100 Personnel Services – Salaries				21,508.20
Total Personnel Services – Salaries				\$21,508.20
200 <u>Personnel Services – Employee Benefits</u>				
220 Social Security Contributions				1,645.39
Total Personnel Services – Employee Benefits				\$1,645.39
300 <u>Purchased Professional and Technical Services</u>				
330 Other Professional Services				29,300.00
340 Technical Services				8,470.63
Total Purchased Professional and Technical Services				\$37,770.63
500 <u>Other Purchased Services</u>				
520 Insurance – General				6,003.25
530 Communications				166.98
Total Other Purchased Services				\$6,170.23
600 <u>Supplies</u>				
610 General Supplies				185.13
Total Supplies				\$185.13
Total 2330 Tax Assessment and Collection Services				\$67,279.58

LEA : 114065503 Muhlenberg SD

Printed 1/3/2023 11:56:02 AM

General Fund (10)

2350 Legal and Accounting Services	<u>Elementary</u>	<u>Secondary</u>	<u>Federal</u>	<u>Total</u>
300 <u>Purchased Professional and Technical Services</u>				
330 Other Professional Services				185,350.95
Total Purchased Professional and Technical Services				\$185,350.95
Total 2350 Legal and Accounting Services				\$185,350.95

LEA : 114065503 Muhlenberg SD

Printed 1/3/2023 11:56:02 AM

General Fund (10)

2360 Office of the Superintendent / Executive Director Services	<u>Elementary</u>	<u>Secondary</u>	<u>Federal</u>	<u>Total</u>
100 <u>Personnel Services – Salaries</u>				
100 Personnel Services – Salaries				543,458.60
Total Personnel Services – Salaries				\$543,458.60
200 <u>Personnel Services – Employee Benefits</u>				
210 Group Insurance – Contracted Provider				109,595.91
220 Social Security Contributions				35,557.36
230 PSERS Retirement Contributions				186,203.51
250 Unemployment Compensation				276.84
260 Workers' Compensation				2,237.25
Total Personnel Services – Employee Benefits				\$333,870.87
400 <u>Purchased Property Services</u>				
430 Repairs and Maintenance Services				1,028.83
Total Purchased Property Services				\$1,028.83
500 <u>Other Purchased Services</u>				
530 Communications	527.55	527.56		1,055.11
580 Travel				2,273.22
Total Other Purchased Services	\$527.55	\$527.56		\$3,328.33
600 <u>Supplies</u>				
610 General Supplies				2,118.76
630 Food				6,525.05
650 Supplies & Fees – Technology Related			1,218.00	1,218.00
Total Supplies			\$1,218.00	\$9,861.81
800 <u>Other Objects</u>				
810 Dues and Fees				11,326.95
Total Other Objects				\$11,326.95
Total 2360 Office of the Superintendent / Executive Director Services	\$527.55	\$527.56	\$1,218.00	\$902,875.39

LEA : 114065503 Muhlenberg SD

Printed 1/3/2023 11:56:02 AM

General Fund (10)

2380 Office of the Principal Services	Elementary	Secondary	Federal	Total
100 <u>Personnel Services – Salaries</u>				
100 Personnel Services – Salaries	772,378.33	902,256.97		1,674,635.30
Total Personnel Services – Salaries	\$772,378.33	\$902,256.97		\$1,674,635.30
200 <u>Personnel Services – Employee Benefits</u>				
210 Group Insurance – Contracted Provider	229,854.30	210,749.77		440,604.07
220 Social Security Contributions	56,668.74	67,403.75		124,072.49
230 PSERS Retirement Contributions	266,919.79	299,868.84		566,788.63
250 Unemployment Compensation	692.09	692.10		1,384.19
260 Workers' Compensation	5,593.13	5,593.13		11,186.26
Total Personnel Services – Employee Benefits	\$559,728.05	\$584,307.59		\$1,144,035.64
400 <u>Purchased Property Services</u>				
430 Repairs and Maintenance Services	12,944.01	10,584.79		23,528.80
440 Rentals	1,641.36	4,281.30		5,922.66
Total Purchased Property Services	\$14,585.37	\$14,866.09		\$29,451.46
500 <u>Other Purchased Services</u>				
530 Communications	5,120.23	8,500.53		13,620.76
550 Printing and Binding	1,110.00	37.12		1,147.12
580 Travel		457.13		457.13
591 Services Purchased Locally	40.00	400.00		440.00
Total Other Purchased Services	\$6,270.23	\$9,394.78		\$15,665.01
600 <u>Supplies</u>				
610 General Supplies	26,474.94	6,171.21		32,646.15
630 Food	2,500.28	1,340.40		3,840.68
650 Supplies & Fees – Technology Related	2,160.96			2,160.96
Total Supplies	\$31,136.18	\$7,511.61		\$38,647.79
800 <u>Other Objects</u>				
810 Dues and Fees	3,064.00	1,263.11		4,327.11
Total Other Objects	\$3,064.00	\$1,263.11		\$4,327.11
Total 2380 Office of the Principal Services	\$1,387,162.16	\$1,519,600.15		\$2,906,762.31

LEA : 114065503 Muhlenberg SD

Printed 1/3/2023 11:56:02 AM

General Fund (10)				
2390 Other Administration Services	<u>Elementary</u>	<u>Secondary</u>	<u>Federal</u>	<u>Total</u>
300 <u>Purchased Professional and Technical Services</u>				
330 Other Professional Services				14,566.30
340 Technical Services				425.70
390 Other Purchased Professional and Technical Services				12,513.50
Total Purchased Professional and Technical Services				\$27,505.50
400 <u>Purchased Property Services</u>				
440 Rentals				11,765.23
Total Purchased Property Services				\$11,765.23
500 <u>Other Purchased Services</u>				
550 Printing and Binding				6,333.02
Total Other Purchased Services				\$6,333.02
600 <u>Supplies</u>				
610 General Supplies				2,831.81
650 Supplies & Fees – Technology Related				8,370.00
Total Supplies				\$11,201.81
800 <u>Other Objects</u>				
810 Dues and Fees				4,616.26
890 Miscellaneous Expenditures				35.66
Total Other Objects				\$4,651.92
Total 2390 Other Administration Services				\$61,457.48

LEA : 114065503 Muhlenberg SD

Printed 1/3/2023 11:56:02 AM

General Fund (10)				
2400 Support Services – Pupil Health	<u>Elementary</u>	<u>Secondary</u>	<u>Federal</u>	<u>Total</u>
100 <u>Personnel Services – Salaries</u>				
100 Personnel Services – Salaries			16,537.50	441,305.30
Total Personnel Services – Salaries			\$16,537.50	\$441,305.30
200 <u>Personnel Services – Employee Benefits</u>				
210 Group Insurance – Contracted Provider				100,677.96
220 Social Security Contributions			434.43	32,535.09
230 PSERS Retirement Contributions			1,984.37	152,517.07
250 Unemployment Compensation				498.31
260 Workers' Compensation				4,027.05
Total Personnel Services – Employee Benefits			\$2,418.80	\$290,255.48
300 <u>Purchased Professional and Technical Services</u>				
330 Other Professional Services			9,176.00	202,918.04
390 Other Purchased Professional and Technical Services			1,012.00	16,489.77
Total Purchased Professional and Technical Services			\$10,188.00	\$219,407.81
600 <u>Supplies</u>				
610 General Supplies			3,384.94	12,302.83
Total Supplies			\$3,384.94	\$12,302.83
700 <u>Property</u>				
752 Capital Equipment – Original and Additional			15,960.00	15,960.00
Total Property			\$15,960.00	\$15,960.00
Total 2400 Support Services – Pupil Health			\$48,489.24	\$979,231.42

LEA : 114065503 Muhlenberg SD

Printed 1/3/2023 11:56:02 AM

General Fund (10)

2420 Medical Services	<u>Elementary</u>	<u>Secondary</u>	<u>Federal</u>	<u>Total</u>
300 <u>Purchased Professional and Technical Services</u>				
330 Other Professional Services			1,896.00	195,503.04
Total Purchased Professional and Technical Services			\$1,896.00	\$195,503.04
600 <u>Supplies</u>				
610 General Supplies			3,384.94	4,011.49
Total Supplies			\$3,384.94	\$4,011.49
700 <u>Property</u>				
752 Capital Equipment – Original and Additional			15,960.00	15,960.00
Total Property			\$15,960.00	\$15,960.00
Total 2420 Medical Services			\$21,240.94	\$215,474.53

LEA : 114065503 Muhlenberg SD

Printed 1/3/2023 11:56:02 AM

General Fund (10)				
2430 Dental Services	<u>Elementary</u>	<u>Secondary</u>	<u>Federal</u>	<u>Total</u>
300 <u>Purchased Professional and Technical Services</u>				
330 Other Professional Services				135.00
Total Purchased Professional and Technical Services				\$135.00
Total 2430 Dental Services				\$135.00

LEA : 114065503 Muhlenberg SD

Printed 1/3/2023 11:56:02 AM

General Fund (10)

2440 Nursing Services

	<u>Elementary</u>	<u>Secondary</u>	<u>Federal</u>	<u>Total</u>
100 <u>Personnel Services – Salaries</u>				
100 Personnel Services – Salaries			16,537.50	441,305.30
Total Personnel Services – Salaries			\$16,537.50	\$441,305.30
200 <u>Personnel Services – Employee Benefits</u>				
210 Group Insurance – Contracted Provider				100,677.96
220 Social Security Contributions			434.43	32,535.09
230 PSERS Retirement Contributions			1,984.37	152,517.07
250 Unemployment Compensation				498.31
260 Workers' Compensation				4,027.05
Total Personnel Services – Employee Benefits			\$2,418.80	\$290,255.48
300 <u>Purchased Professional and Technical Services</u>				
390 Other Purchased Professional and Technical Services			1,012.00	16,489.77
Total Purchased Professional and Technical Services			\$1,012.00	\$16,489.77
600 <u>Supplies</u>				
610 General Supplies				8,291.34
Total Supplies				\$8,291.34
Total 2440 Nursing Services			\$19,968.30	\$756,341.89

LEA : 114065503 Muhlenberg SD

Printed 1/3/2023 11:56:02 AM

General Fund (10)

2490 Other Health Services

300 Purchased Professional and Technical Services

	<u>Elementary</u>	<u>Secondary</u>	<u>Federal</u>	<u>Total</u>
330 Other Professional Services			7,280.00	7,280.00
Total Purchased Professional and Technical Services			\$7,280.00	\$7,280.00
Total 2490 Other Health Services			\$7,280.00	\$7,280.00

LEA : 114065503 Muhlenberg SD

Printed 1/3/2023 11:56:02 AM

General Fund (10)				
2500 Support Services – Business	<u>Elementary</u>	<u>Secondary</u>	<u>Federal</u>	<u>Total</u>
100 <u>Personnel Services – Salaries</u>				
100 Personnel Services – Salaries				359,400.33
Total Personnel Services – Salaries				\$359,400.33
200 <u>Personnel Services – Employee Benefits</u>				
210 Group Insurance – Contracted Provider				102,729.14
220 Social Security Contributions				26,616.83
230 PSERS Retirement Contributions				124,054.51
250 Unemployment Compensation				276.85
260 Workers' Compensation				2,237.25
Total Personnel Services – Employee Benefits				\$255,914.58
400 <u>Purchased Property Services</u>				
430 Repairs and Maintenance Services				4,533.40
440 Rentals				1,679.64
Total Purchased Property Services				\$6,213.04
500 <u>Other Purchased Services</u>				
530 Communications				3,079.64
580 Travel				126.36
Total Other Purchased Services				\$3,206.00
600 <u>Supplies</u>				
610 General Supplies				1,572.37
650 Supplies & Fees – Technology Related				43,246.92
Total Supplies				\$44,819.29
800 <u>Other Objects</u>				
810 Dues and Fees				1,080.51
890 Miscellaneous Expenditures				273.03
Total Other Objects				\$1,353.54
Total 2500 Support Services – Business				\$670,906.78

LEA : 114065503 Muhlenberg SD

Printed 1/3/2023 11:56:02 AM

General Fund (10)				
2510 Fiscal Services				
	<u>Elementary</u>	<u>Secondary</u>	<u>Federal</u>	<u>Total</u>
100 <u>Personnel Services – Salaries</u>				
100 Personnel Services – Salaries				359,400.33
Total Personnel Services – Salaries				\$359,400.33
200 <u>Personnel Services – Employee Benefits</u>				
210 Group Insurance – Contracted Provider				102,729.14
220 Social Security Contributions				26,616.83
230 PSERS Retirement Contributions				124,054.51
250 Unemployment Compensation				276.85
260 Workers' Compensation				2,237.25
Total Personnel Services – Employee Benefits				\$255,914.58
400 <u>Purchased Property Services</u>				
430 Repairs and Maintenance Services				4,533.40
440 Rentals				1,679.64
Total Purchased Property Services				\$6,213.04
500 <u>Other Purchased Services</u>				
530 Communications				3,079.64
580 Travel				126.36
Total Other Purchased Services				\$3,206.00
600 <u>Supplies</u>				
610 General Supplies				1,572.37
650 Supplies & Fees – Technology Related				43,246.92
Total Supplies				\$44,819.29
800 <u>Other Objects</u>				
810 Dues and Fees				1,080.51
890 Miscellaneous Expenditures				273.03
Total Other Objects				\$1,353.54
Total 2510 Fiscal Services				\$670,906.78

LEA : 114065503 Muhlenberg SD

Printed 1/3/2023 11:56:02 AM

General Fund (10)				
2511 Supervision of Fiscal Services - Head of Component	<u>Elementary</u>	<u>Secondary</u>	<u>Federal</u>	<u>Total</u>
100 <u>Personnel Services – Salaries</u>				
100 Personnel Services – Salaries				178,982.71
Total Personnel Services – Salaries				\$178,982.71
200 <u>Personnel Services – Employee Benefits</u>				
210 Group Insurance – Contracted Provider				30,181.35
220 Social Security Contributions				13,534.96
230 PSERS Retirement Contributions				61,016.54
250 Unemployment Compensation				110.74
260 Workers' Compensation				894.90
Total Personnel Services – Employee Benefits				\$105,738.49
400 <u>Purchased Property Services</u>				
430 Repairs and Maintenance Services				393.37
Total Purchased Property Services				\$393.37
600 <u>Supplies</u>				
610 General Supplies				53.00
Total Supplies				\$53.00
800 <u>Other Objects</u>				
810 Dues and Fees				619.00
Total Other Objects				\$619.00
Total 2511 Supervision of Fiscal Services - Head of Component				\$285,786.57

LEA : 114065503 Muhlenberg SD

Printed 1/3/2023 11:56:02 AM

General Fund (10)				
2512 Budgeting Services	<u>Elementary</u>	<u>Secondary</u>	<u>Federal</u>	<u>Total</u>
600 <u>Supplies</u>				
650 Supplies & Fees – Technology Related				5,375.92
Total Supplies				\$5,375.92
Total 2512 Budgeting Services				\$5,375.92

LEA : 114065503 Muhlenberg SD

Printed 1/3/2023 11:56:02 AM

General Fund (10)

2514 Payroll Services

	<u>Elementary</u>	<u>Secondary</u>	<u>Federal</u>	<u>Total</u>
100 <u>Personnel Services – Salaries</u>				
100 Personnel Services – Salaries				44,591.62
Total Personnel Services – Salaries				\$44,591.62
200 <u>Personnel Services – Employee Benefits</u>				
210 Group Insurance – Contracted Provider				25,965.46
220 Social Security Contributions				3,084.72
230 PSERS Retirement Contributions				15,580.35
250 Unemployment Compensation				55.37
260 Workers' Compensation				447.45
Total Personnel Services – Employee Benefits				\$45,133.35
400 <u>Purchased Property Services</u>				
430 Repairs and Maintenance Services				245.16
Total Purchased Property Services				\$245.16
600 <u>Supplies</u>				
610 General Supplies				242.56
Total Supplies				\$242.56
Total 2514 Payroll Services				\$90,212.69

LEA : 114065503 Muhlenberg SD

Printed 1/3/2023 11:56:02 AM

General Fund (10)				
2515 Financial Accounting Services				
	<u>Elementary</u>	<u>Secondary</u>	<u>Federal</u>	<u>Total</u>
100 <u>Personnel Services – Salaries</u>				
100 Personnel Services – Salaries				86,520.00
Total Personnel Services – Salaries				\$86,520.00
200 <u>Personnel Services – Employee Benefits</u>				
210 Group Insurance – Contracted Provider				27,333.51
220 Social Security Contributions				6,425.28
230 PSERS Retirement Contributions				30,229.98
250 Unemployment Compensation				55.37
260 Workers' Compensation				447.45
Total Personnel Services – Employee Benefits				\$64,491.59
400 <u>Purchased Property Services</u>				
430 Repairs and Maintenance Services				3,649.67
440 Rentals				1,679.64
Total Purchased Property Services				\$5,329.31
500 <u>Other Purchased Services</u>				
530 Communications				3,079.64
580 Travel				126.36
Total Other Purchased Services				\$3,206.00
600 <u>Supplies</u>				
610 General Supplies				1,233.70
650 Supplies & Fees – Technology Related				37,871.00
Total Supplies				\$39,104.70
800 <u>Other Objects</u>				
810 Dues and Fees				461.51
890 Miscellaneous Expenditures				273.03
Total Other Objects				\$734.54
Total 2515 Financial Accounting Services				\$199,386.14

LEA : 114065503 Muhlenberg SD

Printed 1/3/2023 11:56:02 AM

General Fund (10)

2519 Other Fiscal Services	<u>Elementary</u>	<u>Secondary</u>	<u>Federal</u>	<u>Total</u>
100 <u>Personnel Services – Salaries</u>				
100 Personnel Services – Salaries				49,306.00
Total Personnel Services – Salaries				\$49,306.00
200 <u>Personnel Services – Employee Benefits</u>				
210 Group Insurance – Contracted Provider				19,248.82
220 Social Security Contributions				3,571.87
230 PSERS Retirement Contributions				17,227.64
250 Unemployment Compensation				55.37
260 Workers' Compensation				447.45
Total Personnel Services – Employee Benefits				\$40,551.15
400 <u>Purchased Property Services</u>				
430 Repairs and Maintenance Services				245.20
Total Purchased Property Services				\$245.20
600 <u>Supplies</u>				
610 General Supplies				43.11
Total Supplies				\$43.11
Total 2519 Other Fiscal Services				\$90,145.46

LEA : 114065503 Muhlenberg SD

Printed 1/3/2023 11:56:02 AM

General Fund (10)

2600 Operation and Maintenance of Plant Services

	<u>Elementary</u>	<u>Secondary</u>	<u>Federal</u>	<u>Total</u>
100 <u>Personnel Services – Salaries</u>				
100 Personnel Services – Salaries			55,976.85	1,719,217.15
Total Personnel Services – Salaries			\$55,976.85	\$1,719,217.15
200 <u>Personnel Services – Employee Benefits</u>				
210 Group Insurance – Contracted Provider				533,902.60
220 Social Security Contributions			1,457.05	128,198.04
230 PSERS Retirement Contributions			6,732.01	591,240.92
250 Unemployment Compensation				1,987.71
260 Workers' Compensation				16,063.47
Total Personnel Services – Employee Benefits			\$8,189.06	\$1,271,392.74
300 <u>Purchased Professional and Technical Services</u>				
330 Other Professional Services				12,206.19
340 Technical Services				450.00
350 Security / Safety Services				64,802.88
Total Purchased Professional and Technical Services				\$77,459.07
400 <u>Purchased Property Services</u>				
410 Cleaning Services				58,954.52
420 Utility Services				79,780.61
430 Repairs and Maintenance Services				324,290.14
440 Rentals				7,901.92
460 Extermination Services				28,876.10
490 Other Purchased Property Services				4,568.90
Total Purchased Property Services				\$504,372.19
500 <u>Other Purchased Services</u>				
522 Automotive Liability Insurance				7,206.00
523 General Property and Liability Insurance				135,902.00
529 Other Insurance				11,990.00
530 Communications				72,693.51
580 Travel				207.50
Total Other Purchased Services				\$227,999.01
600 <u>Supplies</u>				
610 General Supplies	106,546.64	106,829.86	32,736.30	246,112.80
620 Energy				535,294.69
650 Supplies & Fees – Technology Related				10,775.95
Total Supplies	\$106,546.64	\$106,829.86	\$32,736.30	\$792,183.44
700 <u>Property</u>				
752 Capital Equipment – Original and Additional			32,374.80	32,374.80
762 Capitalized Equipment - Replacement				48,863.74
Total Property			\$32,374.80	\$81,238.54
800 <u>Other Objects</u>				
810 Dues and Fees				732.63

LEA : 114065503 Muhlenberg SD

Printed 1/3/2023 11:56:02 AM

General Fund (10)

2600 Operation and Maintenance of Plant Services	<u>Elementary</u>	<u>Secondary</u>	<u>Federal</u>	<u>Total</u>
Total Other Objects				\$732.63
Total 2600 Operation and Maintenance of Plant Services	\$106,546.64	\$106,829.86	\$129,277.01	\$4,674,594.77

LEA : 114065503 Muhlenberg SD

Printed 1/3/2023 11:56:02 AM

General Fund (10)

2610 Supervision of Operation and Maintenance of Plant Services	<u>Elementary</u>	<u>Secondary</u>	<u>Federal</u>	<u>Total</u>
100 <u>Personnel Services – Salaries</u>				
100 Personnel Services – Salaries				282,171.97
Total Personnel Services – Salaries				\$282,171.97
200 <u>Personnel Services – Employee Benefits</u>				
210 Group Insurance – Contracted Provider				77,535.50
220 Social Security Contributions				20,980.38
230 PSERS Retirement Contributions				98,308.58
250 Unemployment Compensation				215.94
260 Workers' Compensation				1,745.06
Total Personnel Services – Employee Benefits				\$198,785.46
800 <u>Other Objects</u>				
810 Dues and Fees				160.00
Total Other Objects				\$160.00
Total 2610 Supervision of Operation and Maintenance of Plant Services				\$481,117.43

LEA : 114065503 Muhlenberg SD

Printed 1/3/2023 11:56:02 AM

General Fund (10)				
2611 Supervision of Operation and Maintenance of Plant Services – Head of Component	<u>Elementary</u>	<u>Secondary</u>	<u>Federal</u>	<u>Total</u>
100 <u>Personnel Services – Salaries</u>				
100 Personnel Services – Salaries				136,375.83
Total Personnel Services – Salaries				\$136,375.83
200 <u>Personnel Services – Employee Benefits</u>				
210 Group Insurance – Contracted Provider				29,725.38
220 Social Security Contributions				10,072.45
230 PSERS Retirement Contributions				47,649.87
250 Unemployment Compensation				105.20
260 Workers' Compensation				850.16
Total Personnel Services – Employee Benefits				\$88,403.06
800 <u>Other Objects</u>				
810 Dues and Fees				160.00
Total Other Objects				\$160.00
Total 2611 Supervision of Operation and Maintenance of Plant Services – Head of Component				\$224,938.89

LEA : 114065503 Muhlenberg SD

Printed 1/3/2023 11:56:02 AM

General Fund (10)

2619 Supervision of Operation and Maintenance of Plant Services – All Other Supervision	<u>Elementary</u>	<u>Secondary</u>	<u>Federal</u>	<u>Total</u>
100 <u>Personnel Services – Salaries</u>				
100 Personnel Services – Salaries				145,796.14
Total Personnel Services – Salaries				\$145,796.14
200 <u>Personnel Services – Employee Benefits</u>				
210 Group Insurance – Contracted Provider				47,810.12
220 Social Security Contributions				10,907.93
230 PSERS Retirement Contributions				50,658.71
250 Unemployment Compensation				110.74
260 Workers' Compensation				894.90
Total Personnel Services – Employee Benefits				\$110,382.40
Total 2619 Supervision of Operation and Maintenance of Plant Services – All Other Supervision				\$256,178.54

LEA : 114065503 Muhlenberg SD

Printed 1/3/2023 11:56:02 AM

General Fund (10)				
2620 Operation of Buildings Services	<u>Elementary</u>	<u>Secondary</u>	<u>Federal</u>	<u>Total</u>
100 <u>Personnel Services – Salaries</u>				
100 Personnel Services – Salaries			55,976.85	1,437,045.18
Total Personnel Services – Salaries			\$55,976.85	\$1,437,045.18
200 <u>Personnel Services – Employee Benefits</u>				
210 Group Insurance – Contracted Provider				456,367.10
220 Social Security Contributions			1,457.05	107,217.66
230 PSERS Retirement Contributions			6,732.01	492,932.34
250 Unemployment Compensation				1,771.77
260 Workers' Compensation				14,318.41
Total Personnel Services – Employee Benefits			\$8,189.06	\$1,072,607.28
300 <u>Purchased Professional and Technical Services</u>				
330 Other Professional Services				12,206.19
340 Technical Services				450.00
350 Security / Safety Services				29,633.00
Total Purchased Professional and Technical Services				\$42,289.19
400 <u>Purchased Property Services</u>				
410 Cleaning Services				29,686.52
420 Utility Services				79,780.61
430 Repairs and Maintenance Services				323,413.90
440 Rentals				7,901.92
460 Extermination Services				28,876.10
490 Other Purchased Property Services				4,568.90
Total Purchased Property Services				\$474,227.95
500 <u>Other Purchased Services</u>				
523 General Property and Liability Insurance				127,204.00
530 Communications				72,693.51
580 Travel				207.50
Total Other Purchased Services				\$200,105.01
600 <u>Supplies</u>				
610 General Supplies	90,513.60	90,513.60	23,108.30	204,135.50
620 Energy				535,294.69
650 Supplies & Fees – Technology Related				7,962.95
Total Supplies	\$90,513.60	\$90,513.60	\$23,108.30	\$747,393.14
700 <u>Property</u>				
752 Capital Equipment – Original and Additional			32,374.80	32,374.80
762 Capitalized Equipment - Replacement				28,677.74
Total Property			\$32,374.80	\$61,052.54
800 <u>Other Objects</u>				
810 Dues and Fees				42.63
Total Other Objects				\$42.63
Total 2620 Operation of Buildings Services	\$90,513.60	\$90,513.60	\$119,649.01	\$4,034,762.92

LEA : 114065503 Muhlenberg SD

Printed 1/3/2023 11:56:02 AM

General Fund (10)				
2630 Care and Upkeep of Grounds Services	<u>Elementary</u>	<u>Secondary</u>	<u>Federal</u>	<u>Total</u>
400 <u>Purchased Property Services</u>				
410 Cleaning Services				29,268.00
Total Purchased Property Services				\$29,268.00
600 <u>Supplies</u>				
610 General Supplies	9,778.04	9,778.04		19,556.08
Total Supplies	\$9,778.04	\$9,778.04		\$19,556.08
700 <u>Property</u>				
762 Capitalized Equipment - Replacement				15,186.00
Total Property				\$15,186.00
800 <u>Other Objects</u>				
810 Dues and Fees				35.00
Total Other Objects				\$35.00
Total 2630 Care and Upkeep of Grounds Services	\$9,778.04	\$9,778.04		\$64,045.08

LEA : 114065503 Muhlenberg SD

Printed 1/3/2023 11:56:02 AM

General Fund (10)

2640 Care and Upkeep of Equipment Services	<u>Elementary</u>	<u>Secondary</u>	<u>Federal</u>	<u>Total</u>
400 <u>Purchased Property Services</u>				
430 Repairs and Maintenance Services				1,252.01
Total Purchased Property Services				\$1,252.01
Total 2640 Care and Upkeep of Equipment Services				\$1,252.01

LEA : 114065503 Muhlenberg SD

Printed 1/3/2023 11:56:02 AM

General Fund (10)				
2650 Vehicle Operation and Maintenance Services (Other Than Student Transportation Vehicles)	<u>Elementary</u>	<u>Secondary</u>	<u>Federal</u>	<u>Total</u>
400 <u>Purchased Property Services</u>				
430 Repairs and Maintenance Services				(375.77)
Total Purchased Property Services				(\$375.77)
600 <u>Supplies</u>				
610 General Supplies	207.50	207.51		415.01
Total Supplies	\$207.50	\$207.51		\$415.01
Total 2650 Vehicle Operation and Maintenance Services (Other Than Student Transportation Vehicles)	\$207.50	\$207.51		\$39.24

LEA : 114065503 Muhlenberg SD

Printed 1/3/2023 11:56:02 AM

General Fund (10)				
2660 Safety and Security Services	<u>Elementary</u>	<u>Secondary</u>	<u>Federal</u>	<u>Total</u>
300 <u>Purchased Professional and Technical Services</u>				
350 Security / Safety Services				35,169.88
Total Purchased Professional and Technical Services				\$35,169.88
600 <u>Supplies</u>				
610 General Supplies	6,047.50	6,330.71	9,628.00	22,006.21
650 Supplies & Fees – Technology Related				2,813.00
Total Supplies	\$6,047.50	\$6,330.71	\$9,628.00	\$24,819.21
700 <u>Property</u>				
762 Capitalized Equipment - Replacement				5,000.00
Total Property				\$5,000.00
800 <u>Other Objects</u>				
810 Dues and Fees				495.00
Total Other Objects				\$495.00
Total 2660 Safety and Security Services	\$6,047.50	\$6,330.71	\$9,628.00	\$65,484.09

LEA : 114065503 Muhlenberg SD

Printed 1/3/2023 11:56:02 AM

General Fund (10)

2690 Other Operation and Maintenance of Plant Services	<u>Elementary</u>	<u>Secondary</u>	<u>Federal</u>	<u>Total</u>
500 <u>Other Purchased Services</u>				
522 Automotive Liability Insurance				7,206.00
523 General Property and Liability Insurance				8,698.00
529 Other Insurance				11,990.00
Total Other Purchased Services				\$27,894.00
Total 2690 Other Operation and Maintenance of Plant Services				\$27,894.00

LEA : 114065503 Muhlenberg SD

Printed 1/3/2023 11:56:02 AM

General Fund (10)

2700 Student Transportation Services	<u>Elementary</u>	<u>Secondary</u>	<u>Federal</u>	<u>Total</u>
100 <u>Personnel Services – Salaries</u>				
100 Personnel Services – Salaries				65,796.94
Total Personnel Services – Salaries				\$65,796.94
200 <u>Personnel Services – Employee Benefits</u>				
210 Group Insurance – Contracted Provider				37,286.78
220 Social Security Contributions				4,565.29
230 PSERS Retirement Contributions				22,305.11
250 Unemployment Compensation				60.90
260 Workers' Compensation				492.20
Total Personnel Services – Employee Benefits				\$64,710.28
400 <u>Purchased Property Services</u>				
430 Repairs and Maintenance Services				675.38
440 Rentals				1,200.00
Total Purchased Property Services				\$1,875.38
500 <u>Other Purchased Services</u>				
511 Student Transportation Services from Another LEA Within the State				2,112,453.53
516 Student Transportation Services From the IU				225,750.05
530 Communications				7,559.04
Total Other Purchased Services				\$2,345,762.62
600 <u>Supplies</u>				
610 General Supplies				1,923.98
650 Supplies & Fees – Technology Related				7,833.94
Total Supplies				\$9,757.92
Total 2700 Student Transportation Services				\$2,487,903.14

LEA : 114065503 Muhlenberg SD

Printed 1/3/2023 11:56:02 AM

General Fund (10)

2710 Supervision of Student Transportation Services	<u>Elementary</u>	<u>Secondary</u>	<u>Federal</u>	<u>Total</u>
100 <u>Personnel Services – Salaries</u>				
100 Personnel Services – Salaries				53,254.61
Total Personnel Services – Salaries				\$53,254.61
200 <u>Personnel Services – Employee Benefits</u>				
210 Group Insurance – Contracted Provider				37,286.78
220 Social Security Contributions				3,635.69
230 PSERS Retirement Contributions				17,922.81
250 Unemployment Compensation				60.90
260 Workers' Compensation				492.20
Total Personnel Services – Employee Benefits				\$59,398.38
500 <u>Other Purchased Services</u>				
530 Communications				1,612.54
Total Other Purchased Services				\$1,612.54
600 <u>Supplies</u>				
610 General Supplies				407.40
Total Supplies				\$407.40
Total 2710 Supervision of Student Transportation Services				\$114,672.93

LEA : 114065503 Muhlenberg SD

Printed 1/3/2023 11:56:02 AM

General Fund (10)

2711 Supervision of Student Transportation Services – Head of Component	<u>Elementary</u>	<u>Secondary</u>	<u>Federal</u>	<u>Total</u>
100 <u>Personnel Services – Salaries</u>				
100 Personnel Services – Salaries				53,254.61
Total Personnel Services – Salaries				\$53,254.61
200 <u>Personnel Services – Employee Benefits</u>				
210 Group Insurance – Contracted Provider				37,286.78
220 Social Security Contributions				3,635.69
230 PSERS Retirement Contributions				17,922.81
250 Unemployment Compensation				60.90
260 Workers' Compensation				492.20
Total Personnel Services – Employee Benefits				\$59,398.38
500 <u>Other Purchased Services</u>				
530 Communications				1,612.54
Total Other Purchased Services				\$1,612.54
600 <u>Supplies</u>				
610 General Supplies				407.40
Total Supplies				\$407.40
Total 2711 Supervision of Student Transportation Services – Head of Component				\$114,672.93

LEA : 114065503 Muhlenberg SD

Printed 1/3/2023 11:56:02 AM

General Fund (10)

2720 Vehicle Operation Services

<u>Elementary</u>	<u>Secondary</u>	<u>Federal</u>	<u>Total</u>
-------------------	------------------	----------------	--------------

500 Other Purchased Services

511 Student Transportation Services from Another LEA Within the State				1,581,083.18
---	--	--	--	--------------

Total Other Purchased Services				\$1,581,083.18
---------------------------------------	--	--	--	-----------------------

Total 2720 Vehicle Operation Services				\$1,581,083.18
--	--	--	--	-----------------------

LEA : 114065503 Muhlenberg SD

Printed 1/3/2023 11:56:02 AM

General Fund (10)

2730 Monitoring Services

	<u>Elementary</u>	<u>Secondary</u>	<u>Federal</u>	<u>Total</u>
100 <u>Personnel Services – Salaries</u>				
100 Personnel Services – Salaries				12,542.33
Total Personnel Services – Salaries				\$12,542.33
200 <u>Personnel Services – Employee Benefits</u>				
220 Social Security Contributions				929.60
230 PSERS Retirement Contributions				4,382.30
Total Personnel Services – Employee Benefits				\$5,311.90
400 <u>Purchased Property Services</u>				
440 Rentals				1,200.00
Total Purchased Property Services				\$1,200.00
500 <u>Other Purchased Services</u>				
511 Student Transportation Services from Another LEA Within the State				159,939.80
530 Communications				5,946.50
Total Other Purchased Services				\$165,886.30
600 <u>Supplies</u>				
610 General Supplies				1,475.59
650 Supplies & Fees – Technology Related				7,833.94
Total Supplies				\$9,309.53
Total 2730 Monitoring Services				\$194,250.06

LEA : 114065503 Muhlenberg SD

Printed 1/3/2023 11:56:02 AM

General Fund (10)

2740 Vehicle Servicing and Maintenance Services	<u>Elementary</u>	<u>Secondary</u>	<u>Federal</u>	<u>Total</u>
400 <u>Purchased Property Services</u>				
430 Repairs and Maintenance Services				675.38
Total Purchased Property Services				\$675.38
Total 2740 Vehicle Servicing and Maintenance Services				\$675.38

LEA : 114065503 Muhlenberg SD

Printed 1/3/2023 11:56:02 AM

General Fund (10)

2750 Nonpublic Transportation

<u>Elementary</u>	<u>Secondary</u>	<u>Federal</u>	<u>Total</u>
-------------------	------------------	----------------	--------------

500 Other Purchased Services

511 Student Transportation Services from Another LEA Within the State			363,270.73
---	--	--	------------

Total Other Purchased Services			\$363,270.73
---------------------------------------	--	--	---------------------

Total 2750 Nonpublic Transportation			\$363,270.73
--	--	--	---------------------

LEA : 114065503 Muhlenberg SD

Printed 1/3/2023 11:56:02 AM

General Fund (10)

2790 Other Student Transportation Services	<u>Elementary</u>	<u>Secondary</u>	<u>Federal</u>	<u>Total</u>
500 <u>Other Purchased Services</u>				
511 Student Transportation Services from Another LEA Within the State				8,159.82
516 Student Transportation Services From the IU				225,750.05
Total Other Purchased Services				\$233,909.87
600 <u>Supplies</u>				
610 General Supplies				40.99
Total Supplies				\$40.99
Total 2790 Other Student Transportation Services				\$233,950.86

LEA : 114065503 Muhlenberg SD

Printed 1/3/2023 11:56:02 AM

General Fund (10)

2800 Support Services – Central	Elementary	Secondary	Federal	Total
100 <u>Personnel Services – Salaries</u>				
100 Personnel Services – Salaries			25,404.98	460,426.85
Total Personnel Services – Salaries			\$25,404.98	\$460,426.85
200 <u>Personnel Services – Employee Benefits</u>				
210 Group Insurance – Contracted Provider				123,981.35
220 Social Security Contributions				34,311.04
230 PSERS Retirement Contributions				153,896.75
240 Tuition Reimbursement				28,736.00
250 Unemployment Compensation				359.89
260 Workers' Compensation				2,908.43
Total Personnel Services – Employee Benefits				\$344,193.46
300 <u>Purchased Professional and Technical Services</u>				
330 Other Professional Services				1,099.00
340 Technical Services				8,441.90
360 Employee Training and Development Services			3,605.00	13,446.50
Total Purchased Professional and Technical Services			\$3,605.00	\$22,987.40
400 <u>Purchased Property Services</u>				
430 Repairs and Maintenance Services			13,159.19	90,297.39
Total Purchased Property Services			\$13,159.19	\$90,297.39
500 <u>Other Purchased Services</u>				
530 Communications			148.13	4,721.44
550 Printing and Binding				7,274.95
580 Travel			1,354.61	1,720.73
Total Other Purchased Services			\$1,502.74	\$13,717.12
600 <u>Supplies</u>				
610 General Supplies			109.29	7,653.02
650 Supplies & Fees – Technology Related			301,736.44	433,571.99
Total Supplies			\$301,845.73	\$441,225.01
700 <u>Property</u>				
766 Capitalized Technology Equipment – Replacement			363,764.79	363,764.79
Total Property			\$363,764.79	\$363,764.79
800 <u>Other Objects</u>				
810 Dues and Fees			50.00	50.00
Total Other Objects			\$50.00	\$50.00
Total 2800 Support Services – Central			\$709,332.43	\$1,736,662.02

LEA : 114065503 Muhlenberg SD

Printed 1/3/2023 11:56:02 AM

General Fund (10)				
2810 Planning, Research, Development and Evaluation Services	<u>Elementary</u>	<u>Secondary</u>	<u>Federal</u>	<u>Total</u>
100 <u>Personnel Services – Salaries</u>				
100 Personnel Services – Salaries				1,500.00
Total Personnel Services – Salaries				\$1,500.00
200 <u>Personnel Services – Employee Benefits</u>				
220 Social Security Contributions				113.83
230 PSERS Retirement Contributions				524.10
Total Personnel Services – Employee Benefits				\$637.93
300 <u>Purchased Professional and Technical Services</u>				
330 Other Professional Services				1,099.00
340 Technical Services				8,441.90
Total Purchased Professional and Technical Services				\$9,540.90
400 <u>Purchased Property Services</u>				
430 Repairs and Maintenance Services			9,990.00	87,128.20
Total Purchased Property Services			\$9,990.00	\$87,128.20
500 <u>Other Purchased Services</u>				
530 Communications				4,573.31
580 Travel				141.48
Total Other Purchased Services				\$4,714.79
600 <u>Supplies</u>				
610 General Supplies				6,580.25
650 Supplies & Fees – Technology Related			300,587.44	432,422.99
Total Supplies			\$300,587.44	\$439,003.24
700 <u>Property</u>				
766 Capitalized Technology Equipment – Replacement			363,764.79	363,764.79
Total Property			\$363,764.79	\$363,764.79
Total 2810 Planning, Research, Development and Evaluation Services			\$674,342.23	\$906,289.85

LEA : 114065503 Muhlenberg SD

Printed 1/3/2023 11:56:02 AM

General Fund (10)				
2820 Information Services	<u>Elementary</u>	<u>Secondary</u>	<u>Federal</u>	<u>Total</u>
500 <u>Other Purchased Services</u>				
530 Communications			148.13	148.13
550 Printing and Binding				7,274.95
Total Other Purchased Services			\$148.13	\$7,423.08
Total 2820 Information Services			\$148.13	\$7,423.08

Page 119

LEA : 114065503 Muhlenberg SD

Printed 1/3/2023 11:56:02 AM

General Fund (10)

2830 Staff Services

	<u>Elementary</u>	<u>Secondary</u>	<u>Federal</u>	<u>Total</u>
200 <u>Personnel Services – Employee Benefits</u>				
240 Tuition Reimbursement				28,736.00
Total Personnel Services – Employee Benefits				\$28,736.00
300 <u>Purchased Professional and Technical Services</u>				
360 Employee Training and Development Services			3,605.00	13,446.50
Total Purchased Professional and Technical Services			\$3,605.00	\$13,446.50
500 <u>Other Purchased Services</u>				
580 Travel			1,090.16	1,314.80
Total Other Purchased Services			\$1,090.16	\$1,314.80
600 <u>Supplies</u>				
610 General Supplies				963.48
Total Supplies				\$963.48
Total 2830 Staff Services			\$4,695.16	\$44,460.78

LEA : 114065503 Muhlenberg SD

Printed 1/3/2023 11:56:02 AM

General Fund (10)

2834 Staff Development Services – Non-Instructional, Certified Staff Only	<u>Elementary</u>	<u>Secondary</u>	<u>Federal</u>	<u>Total</u>
200 <u>Personnel Services – Employee Benefits</u>				
240 Tuition Reimbursement				28,736.00
Total Personnel Services – Employee Benefits				\$28,736.00
300 <u>Purchased Professional and Technical Services</u>				
360 Employee Training and Development Services			3,605.00	5,410.00
Total Purchased Professional and Technical Services			\$3,605.00	\$5,410.00
500 <u>Other Purchased Services</u>				
580 Travel			1,090.16	1,314.80
Total Other Purchased Services			\$1,090.16	\$1,314.80
Total 2834 Staff Development Services – Non-Instructional, Certified Staff Only			\$4,695.16	\$35,460.80

LEA : 114065503 Muhlenberg SD

Printed 1/3/2023 11:56:02 AM

General Fund (10)				
2836 Staff Development Services – Non-Instructional, Non-Certified Staff Only	<u>Elementary</u>	<u>Secondary</u>	<u>Federal</u>	<u>Total</u>
300 <u>Purchased Professional and Technical Services</u>				
360 Employee Training and Development Services				8,036.50
Total Purchased Professional and Technical Services				\$8,036.50
Total 2836 Staff Development Services – Non-Instructional, Non-Certified Staff Only				\$8,036.50

LEA : 114065503 Muhlenberg SD

Printed 1/3/2023 11:56:02 AM

General Fund (10)				
2839 Other Staff Services	<u>Elementary</u>	<u>Secondary</u>	<u>Federal</u>	<u>Total</u>
600 <u>Supplies</u>				
610 General Supplies				963.48
Total Supplies				\$963.48
Total 2839 Other Staff Services				\$963.48

LEA : 114065503 Muhlenberg SD

Printed 1/3/2023 11:56:02 AM

General Fund (10)

2840 Data Processing Services		<u>Elementary</u>	<u>Secondary</u>	<u>Federal</u>	<u>Total</u>
100 <u>Personnel Services – Salaries</u>					
100 Personnel Services – Salaries				25,404.98	458,926.85
Total Personnel Services – Salaries				\$25,404.98	\$458,926.85
200 <u>Personnel Services – Employee Benefits</u>					
210 Group Insurance – Contracted Provider					123,981.35
220 Social Security Contributions					34,197.21
230 PSERS Retirement Contributions					153,372.65
250 Unemployment Compensation					359.89
260 Workers' Compensation					2,908.43
Total Personnel Services – Employee Benefits					\$314,819.53
Total 2840 Data Processing Services				\$25,404.98	\$773,746.38

LEA : 114065503 Muhlenberg SD

Printed 1/3/2023 11:56:02 AM

General Fund (10)

2850 State and Federal Agency Liaison Services	<u>Elementary</u>	<u>Secondary</u>	<u>Federal</u>	<u>Total</u>
400 <u>Purchased Property Services</u>				
430 Repairs and Maintenance Services			3,169.19	3,169.19
Total Purchased Property Services			\$3,169.19	\$3,169.19
500 <u>Other Purchased Services</u>				
580 Travel			264.45	264.45
Total Other Purchased Services			\$264.45	\$264.45
600 <u>Supplies</u>				
610 General Supplies			109.29	109.29
650 Supplies & Fees – Technology Related			1,149.00	1,149.00
Total Supplies			\$1,258.29	\$1,258.29
800 <u>Other Objects</u>				
810 Dues and Fees			50.00	50.00
Total Other Objects			\$50.00	\$50.00
Total 2850 State and Federal Agency Liaison Services			\$4,741.93	\$4,741.93

LEA : 114065503 Muhlenberg SD

Printed 1/3/2023 11:56:02 AM

General Fund (10)				
2900 Other Support Services	<u>Elementary</u>	<u>Secondary</u>	<u>Federal</u>	<u>Total</u>
500 <u>Other Purchased Services</u>				
595 IU Payments By Withholding				42,565.91
Total Other Purchased Services				\$42,565.91
Total 2900 Other Support Services				\$42,565.91

LEA : 114065503 Muhlenberg SD

Printed 1/3/2023 11:56:02 AM

General Fund (10)

2910 Support Services Not Listed Elsewhere In the 2000 Series

<u>Elementary</u>	<u>Secondary</u>	<u>Federal</u>	<u>Total</u>
-------------------	------------------	----------------	--------------

500 Other Purchased Services

595 IU Payments By Withholding			42,565.91
--------------------------------	--	--	-----------

Total Other Purchased Services			\$42,565.91
---------------------------------------	--	--	--------------------

Total 2910 Support Services Not Listed Elsewhere In the 2000 Series			\$42,565.91
--	--	--	--------------------

LEA : 114065503 Muhlenberg SD

Printed 1/3/2023 11:56:11 AM

General Fund (10)

3000 Operation of Non-Instructional Services		Total
100	<u>Personnel Services – Salaries</u>	
100	Personnel Services – Salaries	1,012,655.98
Total Personnel Services – Salaries		\$1,012,655.98
200	<u>Personnel Services – Employee Benefits</u>	
210	Group Insurance – Contracted Provider	99,717.41
220	Social Security Contributions	76,282.57
230	PSERS Retirement Contributions	338,108.62
250	Unemployment Compensation	276.84
260	Workers' Compensation	2,237.25
Total Personnel Services – Employee Benefits		\$516,622.69
300	<u>Purchased Professional and Technical Services</u>	
330	Other Professional Services	7,185.91
350	Security / Safety Services	11,697.76
390	Other Purchased Professional and Technical Services	300.00
Total Purchased Professional and Technical Services		\$19,183.67
400	<u>Purchased Property Services</u>	
430	Repairs and Maintenance Services	9,424.63
440	Rentals	12,244.60
Total Purchased Property Services		\$21,669.23
500	<u>Other Purchased Services</u>	
510	Student Transportation Services	65,740.82
549	Other Advertising/Public Relations	90.00
550	Printing and Binding	1,316.55
580	Travel	437.69
591	Services Purchased Locally	1,500.00
Total Other Purchased Services		\$69,085.06
600	<u>Supplies</u>	
610	General Supplies	80,198.75
630	Food	8,487.86
650	Supplies & Fees – Technology Related	13,135.00
Total Supplies		\$101,821.61
700	<u>Property</u>	
752	Capital Equipment – Original and Additional	7,544.00
Total Property		\$7,544.00
800	<u>Other Objects</u>	
810	Dues and Fees	8,606.15
890	Miscellaneous Expenditures	550.00
Total Other Objects		\$9,156.15
Total 3000 Operation of Non-Instructional Services		\$1,757,738.39

LEA : 114065503 Muhlenberg SD

Printed 1/3/2023 11:56:11 AM

General Fund (10)

3200 Student Activities

Elementary Secondary Federal Total

100 <u>Personnel Services – Salaries</u>				
100 Personnel Services – Salaries				931,652.07
Total Personnel Services – Salaries				\$931,652.07
200 <u>Personnel Services – Employee Benefits</u>				
210 Group Insurance – Contracted Provider				73,263.97
220 Social Security Contributions				70,169.41
230 PSERS Retirement Contributions				316,207.71
250 Unemployment Compensation				221.47
260 Workers' Compensation				1,789.80
Total Personnel Services – Employee Benefits				\$461,652.36
300 <u>Purchased Professional and Technical Services</u>				
330 Other Professional Services				(1,630.00)
350 Security / Safety Services				5,271.96
Total Purchased Professional and Technical Services				\$3,641.96
400 <u>Purchased Property Services</u>				
430 Repairs and Maintenance Services				9,424.63
440 Rentals			8,952.50	10,513.90
Total Purchased Property Services			\$8,952.50	\$19,938.53
500 <u>Other Purchased Services</u>				
510 Student Transportation Services				65,740.82
549 Other Advertising/Public Relations				90.00
550 Printing and Binding				1,316.55
580 Travel				437.69
591 Services Purchased Locally				1,500.00
Total Other Purchased Services				\$69,085.06
600 <u>Supplies</u>				
610 General Supplies			6,310.44	65,385.75
630 Food				5,315.48
650 Supplies & Fees – Technology Related				13,135.00
Total Supplies			\$6,310.44	\$83,836.23
700 <u>Property</u>				
752 Capital Equipment – Original and Additional				7,544.00
Total Property				\$7,544.00
800 <u>Other Objects</u>				
810 Dues and Fees				8,606.15
890 Miscellaneous Expenditures				550.00
Total Other Objects				\$9,156.15
Total 3200 Student Activities			\$15,262.94	\$1,586,506.36

LEA : 114065503 Muhlenberg SD

Printed 1/3/2023 11:56:11 AM

General Fund (10)

3300 Community Services

	<u>Elementary</u>	<u>Secondary</u>	<u>Federal</u>	<u>Total</u>
100 <u>Personnel Services – Salaries</u>				
100 Personnel Services – Salaries			61,850.75	81,003.91
Total Personnel Services – Salaries			\$61,850.75	\$81,003.91
200 <u>Personnel Services – Employee Benefits</u>				
210 Group Insurance – Contracted Provider			15,025.72	26,453.44
220 Social Security Contributions				6,113.16
230 PSERS Retirement Contributions				21,900.91
250 Unemployment Compensation				55.37
260 Workers' Compensation				447.45
Total Personnel Services – Employee Benefits			\$15,025.72	\$54,970.33
300 <u>Purchased Professional and Technical Services</u>				
330 Other Professional Services			8,815.91	8,815.91
350 Security / Safety Services				6,425.80
390 Other Purchased Professional and Technical Services			300.00	300.00
Total Purchased Professional and Technical Services			\$9,115.91	\$15,541.71
400 <u>Purchased Property Services</u>				
440 Rentals			185.00	185.00
Total Purchased Property Services			\$185.00	\$185.00
600 <u>Supplies</u>				
610 General Supplies			13,867.15	13,867.15
630 Food			2,216.28	3,172.38
Total Supplies			\$16,083.43	\$17,039.53
Total 3300 Community Services			\$102,260.81	\$168,740.48

LEA : 114065503 Muhlenberg SD

Printed 1/3/2023 11:56:11 AM

General Fund (10)				
3400 Scholarships and Awards	<u>Elementary</u>	<u>Secondary</u>	<u>Federal</u>	<u>Total</u>
400 <u>Purchased Property Services</u>				
440 Rentals				1,545.70
Total Purchased Property Services				\$1,545.70
600 <u>Supplies</u>				
610 General Supplies				945.85
Total Supplies				\$945.85
Total 3400 Scholarships and Awards				\$2,491.55

LEA : 114065503 Muhlenberg SD

Printed 1/3/2023 11:56:36 AM

General Fund (10)	
5000 Other Expenditures and Financing Uses	<u>Total</u>
800 <u>Other Objects</u>	
880 Refunds of Prior Years' Receipts	53,161.27
Total Other Objects	\$53,161.27
900 <u>Other Uses of Funds</u>	
939 Other Fund Transfers	5,703,900.00
Total Other Uses of Funds	\$5,703,900.00
Total 5000 Other Expenditures and Financing Uses	\$5,757,061.27

LEA : 114065503 Muhlenberg SD

Printed 1/3/2023 11:56:36 AM

General Fund (10)

5100 Debt Service / Other Expenditures and Financing Uses	<u>Elementary</u>	<u>Secondary</u>	<u>Federal</u>	<u>Total</u>
800 <u>Other Objects</u>				
880 Refunds of Prior Years' Receipts				53,161.27
Total Other Objects				\$53,161.27
Total 5100 Debt Service / Other Expenditures and Financing Uses				\$53,161.27

LEA : 114065503 Muhlenberg SD

Printed 1/3/2023 11:56:36 AM

General Fund (10)

5130 Refund of Prior Year Revenues / Receipts	<u>Elementary</u>	<u>Secondary</u>	<u>Federal</u>	<u>Total</u>
800 <u>Other Objects</u>				
880 Refunds of Prior Years' Receipts				53,161.27
Total Other Objects				\$53,161.27
Total 5130 Refund of Prior Year Revenues / Receipts				\$53,161.27

LEA : 114065503 Muhlenberg SD

Printed 1/3/2023 11:56:36 AM

General Fund (10)

5200 Interfund Transfers – Out	<u>Elementary</u>	<u>Secondary</u>	<u>Federal</u>	<u>Total</u>
900 <u>Other Uses of Funds</u>				
939 Other Fund Transfers				5,703,900.00
Total Other Uses of Funds				\$5,703,900.00
Total 5200 Interfund Transfers – Out				\$5,703,900.00

LEA : 114065503 Muhlenberg SD

Printed 1/3/2023 11:56:36 AM

General Fund (10)

5240 Debt Service Fund Transfers	<u>Elementary</u>	<u>Secondary</u>	<u>Federal</u>	<u>Total</u>
900 <u>Other Uses of Funds</u>				
939 Other Fund Transfers				5,703,900.00
Total Other Uses of Funds				\$5,703,900.00
Total 5240 Debt Service Fund Transfers				\$5,703,900.00

LEA : 114065503 Muhlenberg SD

Printed 1/3/2023 11:56:15 AM

Student Sponsored Activity Fund (21)

3200 Student Activities	<u>Elementary</u>	<u>Secondary</u>	<u>Federal</u>	<u>Total</u>
400 <u>Purchased Property Services</u>				
440 Rentals				3,553.53
Total Purchased Property Services				\$3,553.53
500 <u>Other Purchased Services</u>				
510 Student Transportation Services				10,081.23
550 Printing and Binding				3,280.71
580 Travel				5,418.00
591 Services Purchased Locally				3,577.79
Total Other Purchased Services				\$22,357.73
600 <u>Supplies</u>				
610 General Supplies				46,545.97
630 Food				75,095.64
640 Books and Periodicals				3,899.23
Total Supplies				\$125,540.84
700 <u>Property</u>				
752 Capital Equipment – Original and Additional				4,884.93
Total Property				\$4,884.93
800 <u>Other Objects</u>				
810 Dues and Fees				21,525.25
890 Miscellaneous Expenditures				5,607.65
Total Other Objects				\$27,132.90
Total 3200 Student Activities				\$183,469.93

LEA : 114065503 Muhlenberg SD

Printed 1/3/2023 11:56:15 AM

Student Sponsored Activity Fund (21)				
3400 Scholarships and Awards	<u>Elementary</u>	<u>Secondary</u>	<u>Federal</u>	<u>Total</u>
800 <u>Other Objects</u>				
890 Miscellaneous Expenditures				9,600.00
Total Other Objects				\$9,600.00
Total 3400 Scholarships and Awards				\$9,600.00

LEA : 114065503 Muhlenberg SD

Printed 1/3/2023 11:56:19 AM

Athletic / School-Sponsored Extra Curricular Activities Fund (29)

3000 Operation of Non-Instructional Services		<u>Total</u>
500 <u>Other Purchased Services</u>		
550	Printing and Binding	100.00
580	Travel	4,486.79
591	Services Purchased Locally	43,340.00
Total Other Purchased Services		\$47,926.79
600 <u>Supplies</u>		
610	General Supplies	2,349.85
630	Food	1,920.50
Total Supplies		\$4,270.35
800 <u>Other Objects</u>		
810	Dues and Fees	7,876.83
Total Other Objects		\$7,876.83
Total 3000 Operation of Non-Instructional Services		\$60,073.97

LEA : 114065503 Muhlenberg SD

Printed 1/3/2023 11:56:19 AM

Athletic / School-Sponsored Extra Curricular Activities Fund (29)

3200 Student Activities	<u>Elementary</u>	<u>Secondary</u>	<u>Federal</u>	<u>Total</u>
500 <u>Other Purchased Services</u>				
550 Printing and Binding				100.00
580 Travel				4,486.79
591 Services Purchased Locally				43,340.00
Total Other Purchased Services				\$47,926.79
600 <u>Supplies</u>				
610 General Supplies				2,349.85
630 Food				1,920.50
Total Supplies				\$4,270.35
800 <u>Other Objects</u>				
810 Dues and Fees				7,876.83
Total Other Objects				\$7,876.83
Total 3200 Student Activities				\$60,073.97

LEA : 114065503 Muhlenberg SD

Printed 1/3/2023 11:56:06 AM

Capital Reserve Fund - § 1431 (32)

		<u>Total</u>
2000 Support Services		
400 <u>Purchased Property Services</u>		
430	Repairs and Maintenance Services	18,600.00
Total Purchased Property Services		\$18,600.00
700 <u>Property</u>		
762	Capitalized Equipment - Replacement	20,502.33
Total Property		\$20,502.33
Total 2000 Support Services		\$39,102.33

LEA : 114065503 Muhlenberg SD

Printed 1/3/2023 11:56:06 AM

Capital Reserve Fund - § 1431 (32)

2600 Operation and Maintenance of Plant Services

Elementary Secondary Federal Total

400 Purchased Property Services

430 Repairs and Maintenance Services 18,600.00

Total Purchased Property Services \$18,600.00

700 Property

762 Capitalized Equipment - Replacement 20,502.33

Total Property \$20,502.33

Total 2600 Operation and Maintenance of Plant Services \$39,102.33

LEA : 114065503 Muhlenberg SD

Printed 1/3/2023 11:56:06 AM

Capital Reserve Fund - § 1431 (32)

2620 Operation of Buildings Services	<u>Elementary</u>	<u>Secondary</u>	<u>Federal</u>	<u>Total</u>
400 <u>Purchased Property Services</u>				
430 Repairs and Maintenance Services				18,600.00
Total Purchased Property Services				\$18,600.00
700 <u>Property</u>				
762 Capitalized Equipment - Replacement				20,502.33
Total Property				\$20,502.33
Total 2620 Operation of Buildings Services				\$39,102.33

LEA : 114065503 Muhlenberg SD

Printed 1/3/2023 11:56:23 AM

Capital Reserve Fund - § 1431 (32)	
3000 Operation of Non-Instructional Services	<u>Total</u>
400 <u>Purchased Property Services</u>	
430 Repairs and Maintenance Services	58,375.00
Total Purchased Property Services	\$58,375.00
Total 3000 Operation of Non-Instructional Services	\$58,375.00

LEA : 114065503 Muhlenberg SD

Printed 1/3/2023 11:56:23 AM

Capital Reserve Fund - § 1431 (32)

3200 Student Activities

	<u>Elementary</u>	<u>Secondary</u>	<u>Federal</u>	<u>Total</u>
400 <u>Purchased Property Services</u>				
430 Repairs and Maintenance Services				58,375.00
Total Purchased Property Services				\$58,375.00
Total 3200 Student Activities				\$58,375.00

LEA : 114065503 Muhlenberg SD

Printed 1/3/2023 11:56:28 AM

Capital Reserve Fund - § 1431 (32)

4000 Facilities Acquisition, Construction and Improvement Services

Total

400 Purchased Property Services

450 Construction Services	199,037.36
---------------------------	------------

Total Purchased Property Services	\$199,037.36
--	---------------------

700 Property

710 Land and Improvements	683,083.27
---------------------------	------------

Total Property	\$683,083.27
-----------------------	---------------------

Total 4000 Facilities Acquisition, Construction and Improvement Services	\$882,120.63
---	---------------------

LEA : 114065503 Muhlenberg SD

Printed 1/3/2023 11:56:28 AM

Capital Reserve Fund - § 1431 (32)

4200 Existing Site Improvement Services

Elementary

Secondary

Federal

Total

700 Property

710 Land and Improvements

683,083.27

Total Property				\$683,083.27
Total 4200 Existing Site Improvement Services				\$683,083.27

LEA : 114065503 Muhlenberg SD

Printed 1/3/2023 11:56:28 AM

Capital Reserve Fund - § 1431 (32)				
4500 Building Acquisition and Construction Services – Original and Additional	<u>Elementary</u>	<u>Secondary</u>	<u>Federal</u>	<u>Total</u>
400 <u>Purchased Property Services</u>				
450 Construction Services				199,037.36
Total Purchased Property Services				\$199,037.36
Total 4500 Building Acquisition and Construction Services – Original and Additional				\$199,037.36

LEA : 114065503 Muhlenberg SD

Printed 1/3/2023 11:56:32 AM

Other Capital Projects Fund (39)

4000 Facilities Acquisition, Construction and Improvement Services

Total

400 Purchased Property Services

450 Construction Services

21,438.23

Total Purchased Property Services

\$21,438.23

Total 4000 Facilities Acquisition, Construction and Improvement Services

\$21,438.23

LEA : 114065503 Muhlenberg SD

Printed 1/3/2023 11:56:32 AM

Other Capital Projects Fund (39)

4500 Building Acquisition and Construction Services – Original and Additional	<u>Elementary</u>	<u>Secondary</u>	<u>Federal</u>	<u>Total</u>
400 <u>Purchased Property Services</u>				
450 Construction Services				18,099.73
Total Purchased Property Services				\$18,099.73
Total 4500 Building Acquisition and Construction Services – Original and Additional				\$18,099.73

LEA : 114065503 Muhlenberg SD

Printed 1/3/2023 11:56:32 AM

Other Capital Projects Fund (39)

4600 Existing Building Improvement Services

<u>Elementary</u>	<u>Secondary</u>	<u>Federal</u>	<u>Total</u>
-------------------	------------------	----------------	--------------

400 Purchased Property Services

450 Construction Services			3,338.50
---------------------------	--	--	----------

Total Purchased Property Services			\$3,338.50
--	--	--	-------------------

Total 4600 Existing Building Improvement Services			\$3,338.50
--	--	--	-------------------

LEA : 114065503 Muhlenberg SD

Printed 1/3/2023 11:56:39 AM

Debt Service Fund (40)

5000 Other Expenditures and Financing Uses		<u>Total</u>
800 <u>Other Objects</u>		
830 Interest		843,900.00
Total Other Objects		\$843,900.00
900 <u>Other Uses of Funds</u>		
910 Redemption of Principal		4,860,000.00
Total Other Uses of Funds		\$4,860,000.00
Total 5000 Other Expenditures and Financing Uses		\$5,703,900.00

LEA : 114065503 Muhlenberg SD

Printed 1/3/2023 11:56:39 AM

Debt Service Fund (40)

5100 Debt Service / Other Expenditures and Financing Uses	<u>Elementary</u>	<u>Secondary</u>	<u>Federal</u>	<u>Total</u>
800 <u>Other Objects</u>				
830 Interest				843,900.00
Total Other Objects				\$843,900.00
900 <u>Other Uses of Funds</u>				
910 Redemption of Principal				4,860,000.00
Total Other Uses of Funds				\$4,860,000.00
Total 5100 Debt Service / Other Expenditures and Financing Uses				\$5,703,900.00

LEA : 114065503 Muhlenberg SD

Printed 1/3/2023 11:56:39 AM

Debt Service Fund (40)

5110 Debt Service	<u>Elementary</u>	<u>Secondary</u>	<u>Federal</u>	<u>Total</u>
800 <u>Other Objects</u>				
830 Interest				843,900.00
Total Other Objects				\$843,900.00
900 <u>Other Uses of Funds</u>				
910 Redemption of Principal				4,860,000.00
Total Other Uses of Funds				\$4,860,000.00
Total 5110 Debt Service				\$5,703,900.00

LEA : 114065503 Muhlenberg SD

Printed 1/3/2023 11:56:43 AM

	<u>General Fund(10)</u>	<u>Student Sponsored Activity Fund(21)</u>	<u>Public Purpose Trust(27)</u>	<u>Other Compt Approved (28)</u>	<u>Athletic / Activity(29)</u>
1000 <u>Instruction</u>					
1100 Regular Programs - Elementary / Secondary	26,309,391.14				
1200 Special Programs - Elementary / Secondary	10,126,829.25				
1300 Vocational Education	2,265,815.77				
1400 Other Instructional Programs - Elementary / Secondary	1,708,364.03				
1500 Nonpublic School Programs	25,182.13				
Total Instruction	\$40,435,582.32				
2000 <u>Support Services</u>					
2100 Support Services - Students	2,815,736.41				
2200 Support Services - Instructional Staff	1,835,878.77				
2300 Support Services - Administration	4,172,270.91				
2400 Support Services - Pupil Health	979,231.42				
2500 Support Services - Business	670,906.78				
2600 Operation and Maintenance of Plant Services	4,674,594.77				
2700 Student Transportation Services	2,487,903.14				
2800 Support Services - Central	1,736,662.02				
2900 Other Support Services	42,565.91				
Total Support Services	\$19,415,750.13				
3000 <u>Operation of Non-Instructional Services</u>					
3200 Student Activities	1,586,506.36	183,469.93			60,073.97
3300 Community Services	168,740.48				
3400 Scholarships and Awards	2,491.55	9,600.00			
Total Operation of Non-Instructional Services	\$1,757,738.39	\$193,069.93			\$60,073.97
4000 <u>Facilities Acquisition, Construction and Improvement Services</u>					
4200 Existing Site Improvement Services					
4500 Building Acquisition and Construction Services - Original and Additional					
4600 Existing Building Improvement Services					
Total Facilities Acquisition, Construction and Improvement					
5000 <u>Other Expenditures and Financing Uses</u>					
5100 Debt Service / Other Expenditures and Financing Uses	53,161.27				
5200 Interfund Transfers - Out	5,703,900.00				
Total Other Expenditures and Financing Uses	\$5,757,061.27				
TOTAL ACTUAL EXPENDITURES & OTHER FINANCING USES	\$67,366,132.11	\$193,069.93			\$60,073.97

LEA : 114065503 Muhlenberg SD

Printed 1/3/2023 11:56:43 AM

	<u>Capital Reserve (690.1850)(31)</u>	<u>Capital Reserve (1431)(32)</u>	<u>Other Capital Projects Fund(39)</u>	<u>Debt Service(40)</u>	<u>Permanent(90)</u>
1000 <u>Instruction</u>					
1100 Regular Programs - Elementary / Secondary					
1200 Special Programs - Elementary / Secondary					
1300 Vocational Education					
1400 Other Instructional Programs - Elementary / Secondary					
1500 Nonpublic School Programs					
Total Instruction					
2000 <u>Support Services</u>					
2100 Support Services - Students					
2200 Support Services - Instructional Staff					
2300 Support Services - Administration					
2400 Support Services - Pupil Health					
2500 Support Services - Business					
2600 Operation and Maintenance of Plant Services		39,102.33			
2700 Student Transportation Services					
2800 Support Services - Central					
2900 Other Support Services					
Total Support Services		\$39,102.33			
3000 <u>Operation of Non-Instructional Services</u>					
3200 Student Activities		58,375.00			
3300 Community Services					
3400 Scholarships and Awards					
Total Operation of Non-Instructional Services		\$58,375.00			
4000 <u>Facilities Acquisition, Construction and Improvement Services</u>					
4200 Existing Site Improvement Services		683,083.27			
4500 Building Acquisition and Construction Services - Original and Additional		199,037.36	18,099.73		
4600 Existing Building Improvement Services			3,338.50		
Total Facilities Acquisition, Construction and Improvement		\$882,120.63	\$21,438.23		
5000 <u>Other Expenditures and Financing Uses</u>					
5100 Debt Service / Other Expenditures and Financing Uses				5,703,900.00	
5200 Interfund Transfers - Out					
Total Other Expenditures and Financing Uses				\$5,703,900.00	
TOTAL ACTUAL EXPENDITURES & OTHER FINANCING USES		\$979,597.96	\$21,438.23	\$5,703,900.00	

LEA : 114065503 Muhlenberg SD

Printed 1/3/2023 11:56:43 AM

	<u>Total</u>
1000 <u>Instruction</u>	
1100 Regular Programs - Elementary / Secondary	26,309,391.14
1200 Special Programs - Elementary / Secondary	10,126,829.25
1300 Vocational Education	2,265,815.77
1400 Other Instructional Programs - Elementary / Secondary	1,708,364.03
1500 Nonpublic School Programs	25,182.13
Total Instruction	\$40,435,582.32
2000 <u>Support Services</u>	
2100 Support Services - Students	2,815,736.41
2200 Support Services - Instructional Staff	1,835,878.77
2300 Support Services - Administration	4,172,270.91
2400 Support Services - Pupil Health	979,231.42
2500 Support Services - Business	670,906.78
2600 Operation and Maintenance of Plant Services	4,713,697.10
2700 Student Transportation Services	2,487,903.14
2800 Support Services - Central	1,736,662.02
2900 Other Support Services	42,565.91
Total Support Services	\$19,454,852.46
3000 <u>Operation of Non-Instructional Services</u>	
3200 Student Activities	1,888,425.26
3300 Community Services	168,740.48
3400 Scholarships and Awards	12,091.55
Total Operation of Non-Instructional Services	\$2,069,257.29
4000 <u>Facilities Acquisition, Construction and Improvement Services</u>	
4200 Existing Site Improvement Services	683,083.27
4500 Building Acquisition and Construction Services - Original and Additional	217,137.09
4600 Existing Building Improvement Services	3,338.50
Total Facilities Acquisition, Construction and Improvement	\$903,558.86
5000 <u>Other Expenditures and Financing Uses</u>	
5100 Debt Service / Other Expenditures and Financing Uses	5,757,061.27
5200 Interfund Transfers - Out	5,703,900.00
Total Other Expenditures and Financing Uses	\$11,460,961.27
TOTAL ACTUAL EXPENDITURES & OTHER FINANCING USES	\$74,324,212.20

LEA : 114065503 Muhlenberg SD

Printed 1/3/2023 11:56:51 AM

PSERS Salary Data (Salary Data should relate to the General Fund only)

Amount	Description	Amount
	Total Salary Base for salaries subject to PSERS withholding	28,177,395.09
	Total Federally Funded salaries subject to PSERS withholding	2,867,442.13

Title I Expenditure Data

Amount	Description	Amount
	Expenditures Funded with Current Title I Funds	783,894.00
	Expenditures Funded with Carry over Title I Funds	11,482.79
Total	Title I Expenditure Data	\$795,376.79

Title IV Revenue Data

Amount	Description	Amount
	Revenue from Title IV-A-1: Student Support and Academic Enrichment Grants	34,170.57
	Revenue from Title IV-B: 21st Century Community Learning Centers	

Title V Revenue Data

Amount	Description	Amount
	Revenue from Title V-B-2: Rural and Low-Income School Programs	
	Revenue from Title V-B-1: Small Rural School Achievement (Directly from the Federal Govt)	

1 . <u>Current Special Education Expenditures within Function 1000.\r\nSee list of exclusions in the note below.</u>	8,724,529.63
2 . <u>Current Special Education Expenditures within Function 2000.\r\nSee list of exclusions in the note below.</u>	845,392.51
3 . <u>Current Special Education Expenditures within Sub-Function 2100.\r\nThis data should also be included in line 2 above.\r\nSee list of exclusions in the note below.</u>	10,750.26
4 . <u>Current Special Education Expenditures within Sub-Function 2200.\r\nThis data should also be included in line 2 above.\r\nSee list of exclusions in the note below.</u>	585,803.79
5 . <u>Current Special Education Expenditures within Sub-Function 2700.\r\nThis data should also be included in line 2 above.\r\nSee list of exclusions in the note below.</u>	
6 . <u>Current Special Education Expenditures within Sub-Function 3100.\r\nSee list of exclusions in the note below.</u>	
7 . <u>Current Special Education Expenditures within Sub-Function 3200.\r\nSee list of exclusions in the note below.</u>	

Note: The Current Special Education Expenditure amounts for each line should be calculated as follows:

- * Include the total expenditures for special education costs from all funds for the function/sub-function requested
- * Exclude data from sub-functions: 1243,1450,1500,1600,1807,2280,2450,2750,2990
- * Exclude data from objects: 322,511,512,516,561,562,564,566,592,593,594,595,596,597,700,830,899

Benefits for Staff Relative to Collective Bargaining Agreements

	OBJECT	COVERED	NOT COVERED	TOTAL
10 General Fund				
	211 Medical Insurance			
	212 Dental Insurance			
	215 Eye Care Insurance	21,300.48	2,062.80	23,363.28
	216 Prescription Insurance			
	271 Self-Insurance Medical Benefits	5,108,535.38	551,916.07	5,660,451.45
	272 Self-Insurance Dental Benefits	165,332.77	13,598.69	178,931.46
	275 Self-Insurance Eye Care Benefits			
	276 Self-Insurance Prescription Benefits			
	FUND TOTAL	\$5,295,168.63	\$567,577.56	\$5,862,746.19
50 Enterprise Fund				
	211 Medical Insurance			
	212 Dental Insurance			
	215 Eye Care Insurance	33.12	204.00	237.12
	216 Prescription Insurance			
	271 Self-Insurance Medical Benefits	8,199.21	49,919.73	58,118.94
	272 Self-Insurance Dental Benefits	456.00	2,256.00	2,712.00
	275 Self-Insurance Eye Care Benefits			
	276 Self-Insurance Prescription Benefits			
	FUND TOTAL	\$8,688.33	\$52,379.73	\$61,068.06
60 Internal Service Fund	No Self Insurance data to report			
	211 Medical Insurance			
	212 Dental Insurance			
	215 Eye Care Insurance			
	216 Prescription Insurance			
	271 Self-Insurance Medical Benefits			
	272 Self-Insurance Dental Benefits			
	275 Self-Insurance Eye Care Benefits			
	276 Self-Insurance Prescription Benefits			
	FUND TOTAL			
Total of All Funds		\$5,303,856.96	\$619,957.29	\$5,923,814.25

LEA : 114065503 Muhlenberg SD

Printed 1/3/2023 11:57:04 AM

Function	Special Education (Prior Year)	Nonspecial Education (Prior Year)	Total (Prior Year)	Special Education (Current Year)	Nonspecial Education (Current Year)	Total (Current Year)
2120 Guidance Services	445,775.90	1,864,310.86	2,310,086.76	424,640.20	1,732,344.89	2,156,985.09
2140 Psychological Services	135,952.68	261,334.15	397,286.83	90,074.71	323,608.78	413,683.49
2150 Speech Pathology and Audiology Services						
2160 Social Work Services				14,031.41	57,241.99	71,273.40
2260 Instruction and Curriculum Development Services	564,707.18	87,543.38	652,250.56	556,789.02	137,112.89	693,901.91
2350 Legal and Accounting Services	126,903.30	165,612.78	292,516.08	46,373.93	138,977.02	185,350.95
2420 Medical Services	198,968.46	99.90	199,068.36	199,514.53	15,960.00	215,474.53
2440 Nursing Services	133,341.33	557,656.19	690,997.52	148,899.11	607,442.78	756,341.89
2700 Student Transportation Services	715,317.19	896,121.82	1,611,439.01	963,285.86	1,524,617.28	2,487,903.14
Total	\$2,320,966.04	\$3,832,679.08	\$6,153,645.12	\$2,443,608.77	\$4,537,305.63	\$6,980,914.40

LEA : 114065503 Muhlenberg SD

Printed 1/3/2023 11:57:09 AM

(PRINCIPAL AMOUNTS ONLY)

GOVERNMENTAL FUNDS/ ACTIVITIES

	Short-Term Borrowing	General Obligation Bonds/Notes	Authority Building Obligations	OLTD, Ext Term Fin, Leases	Other Post- Employment Benefits (OPEB)	Compensated Absences	Net Pension Liability	Total
1. Debt at Beginning of Fiscal Year		25,470,000.00			9,767,201.00	336,349.00	93,250,295.00	128,823,845.00
2. Additional Debt Incurred During Year					962,228.00	302,144.00		1,264,372.00
3. Retirements and Repayments		4,860,000.00			422,972.00	287,018.00	16,589,751.00	22,159,741.00
4. Debt at End of Fiscal Year		20,610,000.00			10,306,457.00	351,475.00	76,660,544.00	107,928,476.00
5. Accreted Interest at End Of Fiscal Year								
6. Total Debt and Accreted Interest		20,610,000.00			10,306,457.00	351,475.00	76,660,544.00	107,928,476.00
7. Current Portion P&I - Due within 1 year		5,704,850.00						5,704,850.00
8. Interest Paid during current fiscal year		843,900.00						843,900.00

(PRINCIPAL AMOUNTS ONLY)

PROPRIETARY FUNDS

	Short-Term Borrowing	General Obligation Bonds/Notes	Authority Building Obligations	OLTD, Ext Term Fin, Leases	Other Post- Employment Benefits (OPEB)	Compensated Absences	Net Pension Liability	Total
1. Debt at Beginning of Fiscal Year					143,742.00		2,814,705.00	2,958,447.00
2. Additional Debt Incurred During Year					14,035.00	10,852.00		24,887.00
3. Retirements and Repayments					4,920.00	3,662.00	1,098,249.00	1,106,831.00
4. Debt at End of Fiscal Year					152,857.00	7,190.00	1,716,456.00	1,876,503.00
5. Accreted Interest at End Of Fiscal Year								
6. Total Debt and Accreted Interest					152,857.00	7,190.00	1,716,456.00	1,876,503.00
7. Current Portion P&I - Due within 1 year								
8. Interest Paid during current fiscal year								

LEA : 114065503 Muhlenberg SD

Total Principal and Interest Payments Made by Your School - All Funds

Function	Fund		Principal (910)	Principal (920)	Interest (830)	Total (Principal +Interest)	Misc Other Uses (990)
5110	10	General Fund					
5110	20	Special Revenue Funds					
5110	30	Capital Projects Funds					
5110	40	Debt Service Fund	4,860,000.00		843,900.00	5,703,900.00	
5110	90	Permanent Fund					
5120	10	General Fund					
5120	20	Special Revenue Funds					
5120	30	Capital Projects Funds					
5120	40	Debt Service Fund					
5140	10	General Fund					
5140	20	Special Revenue Funds					
5140	30	Capital Projects Funds					
5140	40	Debt Service Fund					
5140	90	Permanent Fund					
Total Debt Payments - Governmental Funds			\$4,860,000.00		\$843,900.00	\$5,703,900.00	

Function	Fund		Principal (910)	Principal (920)	Interest (830)	Total (Principal +Interest)
5110	50	Enterprise Fund				
5110	60	Internal Service Fund				
5120	50	Enterprise Fund				
5120	60	Internal Service Fund				
5140	50	Enterprise Fund				
5140	60	Internal Service Fund				
Total Debt Payments - Proprietary Funds						

LEA : 114065503 Muhlenberg SD

Printed 1/3/2023 11:57:09 AM

Debt Details
Governmental Funds/ Activities

Debt Category	Debt Issue Date (MM/YYYY)	Principal Amounts Only				Current Portion Due Within One Year (Principal and Interest)	Interest Paid During Fiscal Year
		Debt at Beginning of Fiscal Year	Additions	Reductions / Repayments	Debt at End of Fiscal Year		
General Obligation Bonds/Notes – CIB	07/2020	14,060,000.00		4,630,000.00	9,430,000.00	4,891,700.00	481,150.00
General Obligation Bonds/Notes – CIB	06/2019	11,410,000.00		230,000.00	11,180,000.00	813,150.00	362,750.00
Compensated Absences		336,349.00	302,144.00	287,018.00	351,475.00		
Other Post-Employment Benefits (OPEB)		9,767,201.00	962,228.00	422,972.00	10,306,457.00		
Net Pension Liability		93,250,295.00		16,589,751.00	76,660,544.00		
Totals for Debt Entered:		\$128,823,845.00	\$1,264,372.00	\$22,159,741.00	\$107,928,476.00	\$5,704,850.00	\$843,900.00

Bond Details
Proprietary Funds

Debt Category	Debt Issue Date (MM/YYYY)	Principal Amounts Only				Current Portion Due Within One Year (Principal and Interest)	Interest Paid During Fiscal Year
		Debt at Beginning of Fiscal Year	Additions	Reductions / Repayments	Debt at End of Fiscal Year		
Compensated Absences			10,852.00	3,662.00	7,190.00		
Other Post-Employment Benefits (OPEB)		143,742.00	14,035.00	4,920.00	152,857.00		
Net Pension Liability		2,814,705.00		1,098,249.00	1,716,456.00		
Totals for Debt Entered:		\$2,958,447.00	\$24,887.00	\$1,106,831.00	\$1,876,503.00		

LEA : 114065503 Muhlenberg SD

General Fund (10)

Section 1: Tuition/Purchased Services as Reported within Expenditure Detail	Amount
Tuition Reported in General Fund Expenditures 1000-560	4,762,857.07
Purchased Services in General Fund Expenditures 1000-594 and 1000-597	
Section 1 Total	\$4,762,857.07

Section 2: Tuition Paid to Institution Types During Fiscal Year	Tuition Paid For Nonspecial Education	Tuition Paid For Special Education	Total
1 1306 Institutions			
2 Institutionalized Children's Programs			
3 Juveniles Incarcerated in Adult Facilities			
4 Residential Treatment Facilities	330.00	2,667.50	2,997.50
5 Other Local Education Agencies			
6 Brick and Mortar Charter Schools			
7 Cyber Charter Schools	627,069.63	687,764.83	1,314,834.46
8 Career and Technology Centers	2,265,815.77		2,265,815.77
9 Approved Private Schools		176,363.42	176,363.42
10 PA Chartered Schools for the Deaf and Blind			
11 Private Residential Rehabilitative Institutions	131,359.67	126,646.96	258,006.63
12 Juvenile Detention Centers	19,518.90	13,090.00	32,608.90
13 Special Program Jointures			
14 Other Tuition Not Included Elsewhere In This Section	23,263.24	688,967.15	712,230.39
Section 2 Total	\$3,067,357.21	\$1,695,499.86	\$4,762,857.07

LEA : 114065503 Muhlenberg SD

Printed 1/3/2023 11:57:15 AM

Food Service / Cafeteria Operations Fund (51)

3000 Operation of Non-Instructional Services		Total
100 <u>Personnel Services – Salaries</u>		
100 Personnel Services – Salaries		887,435.23
Total Personnel Services – Salaries		\$887,435.23
200 <u>Personnel Services – Employee Benefits</u>		
210 Group Insurance – Contracted Provider		62,436.75
220 Social Security Contributions		66,974.73
230 PSERS Retirement Contributions		18,869.52
250 Unemployment Compensation		1,494.93
260 Workers' Compensation		12,081.16
280 Other Post-Employment Benefits (OPEB)		2,912.00
Total Personnel Services – Employee Benefits		\$164,769.09
300 <u>Purchased Professional and Technical Services</u>		
330 Other Professional Services		4,318.24
Total Purchased Professional and Technical Services		\$4,318.24
400 <u>Purchased Property Services</u>		
420 Utility Services		3,600.00
430 Repairs and Maintenance Services		37,445.27
Total Purchased Property Services		\$41,045.27
500 <u>Other Purchased Services</u>		
530 Communications		1,694.66
Total Other Purchased Services		\$1,694.66
600 <u>Supplies</u>		
610 General Supplies		106,440.34
630 Food		1,127,765.79
650 Supplies & Fees – Technology Related		10,796.02
Total Supplies		\$1,245,002.15
700 <u>Property</u>		
740 Depreciation		2,874.28
Total Property		\$2,874.28
800 <u>Other Objects</u>		
810 Dues and Fees		1,307.50
890 Miscellaneous Expenditures		3,220.50
Total Other Objects		\$4,528.00
Total 3000 Operation of Non-Instructional Services		\$2,351,666.92

LEA : 114065503 Muhlenberg SD

Printed 1/3/2023 11:57:15 AM

Food Service / Cafeteria Operations Fund (51)

3100 Food Services	Elementary	Secondary	Federal	Total
100 <u>Personnel Services – Salaries</u>				
100 Personnel Services – Salaries			780,482.22	887,435.23
Total Personnel Services – Salaries			\$780,482.22	\$887,435.23
200 <u>Personnel Services – Employee Benefits</u>				
210 Group Insurance – Contracted Provider			54,911.92	62,436.75
220 Social Security Contributions			58,902.99	66,974.73
230 PSERS Retirement Contributions			16,595.38	18,869.52
250 Unemployment Compensation			1,314.76	1,494.93
260 Workers' Compensation			10,625.15	12,081.16
280 Other Post-Employment Benefits (OPEB)			2,561.05	2,912.00
Total Personnel Services – Employee Benefits			\$144,911.25	\$164,769.09
300 <u>Purchased Professional and Technical Services</u>				
330 Other Professional Services			3,797.81	4,318.24
Total Purchased Professional and Technical Services			\$3,797.81	\$4,318.24
400 <u>Purchased Property Services</u>				
420 Utility Services			3,166.13	3,600.00
430 Repairs and Maintenance Services			32,932.39	37,445.27
Total Purchased Property Services			\$36,098.52	\$41,045.27
500 <u>Other Purchased Services</u>				
530 Communications			1,490.42	1,694.66
Total Other Purchased Services			\$1,490.42	\$1,694.66
600 <u>Supplies</u>				
610 General Supplies			63,612.23	106,440.34
630 Food			991,848.32	1,127,765.79
650 Supplies & Fees – Technology Related			9,494.89	10,796.02
Total Supplies			\$1,064,955.44	\$1,245,002.15
700 <u>Property</u>				
740 Depreciation			2,527.87	2,874.28
Total Property			\$2,527.87	\$2,874.28
800 <u>Other Objects</u>				
810 Dues and Fees			1,149.92	1,307.50
890 Miscellaneous Expenditures			2,832.37	3,220.50
Total Other Objects			\$3,982.29	\$4,528.00
Total 3100 Food Services			\$2,038,245.82	\$2,351,666.92

	<u>Food Service(51)</u>	<u>Child Care Operations(52)</u>	<u>Other Enterprise(58)</u>	<u>Internal Service(60)</u>	<u>Total</u>
3000 <u>Operation of Non-Instructional Services</u>					
3100 Food Services	2,351,666.92				2,351,666.92
Total Operation of Non-Instructional Services	\$2,351,666.92				\$2,351,666.92
TOTAL ACTUAL EXPENDITURES & OTHER FINANCING USES	\$2,351,666.92				\$2,351,666.92

LEA : 114065503 Muhlenberg SD

Printed 1/3/2023 11:57:26 AM

Fund	School	School Number	Local Personnel	Local Nonpersonnel	State Personnel	State Nonpersonnel	Federal Personnel	Federal Nonpersonnel	Total	Explanation
10										
	C E Cole Intermediate Sch	8006	5,584,066.90	311,137.96	3,792,409.28	501,185.63	916,910.39	906,660.54	12,012,370.70	
	Muhlenberg El Ctr	4919	6,117,328.55	384,688.71	5,031,278.99	600,744.41	1,197,318.39	1,050,643.83	14,382,002.88	
	Muhlenberg HS	6610	7,549,460.11	696,005.58	3,706,519.16	502,490.26	775,061.41	889,797.78	14,119,334.30	
	Muhlenberg Jr MS	827	6,993,237.90	624,923.68	4,367,958.42	631,000.21	642,176.12	1,035,096.96	14,294,393.29	
Total			26,244,093.46	2,016,755.93	16,898,165.85	2,235,420.51	3,531,466.31	3,882,199.11	54,808,101.17	